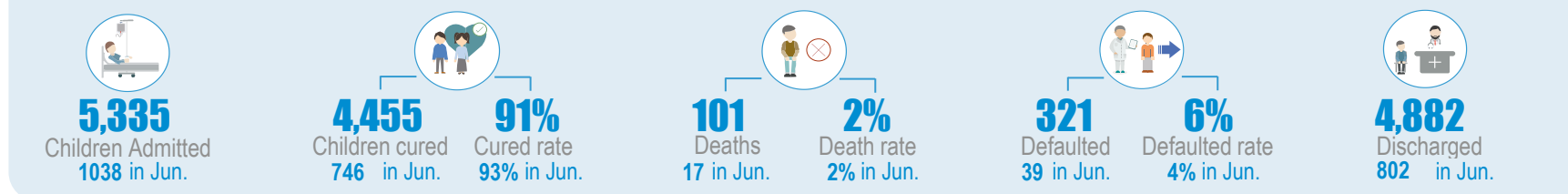


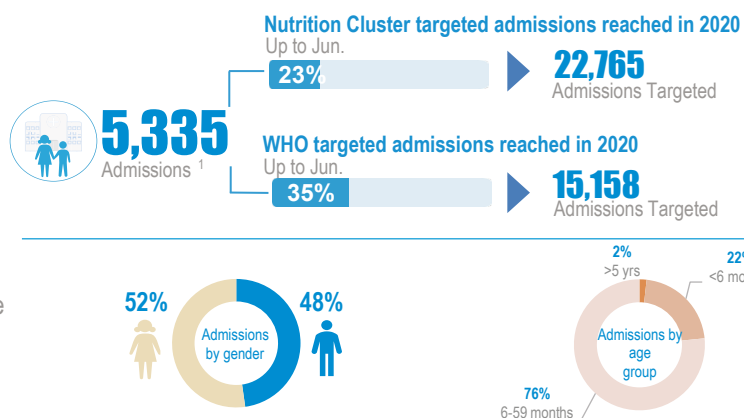
Key Figures - From January to June 2020



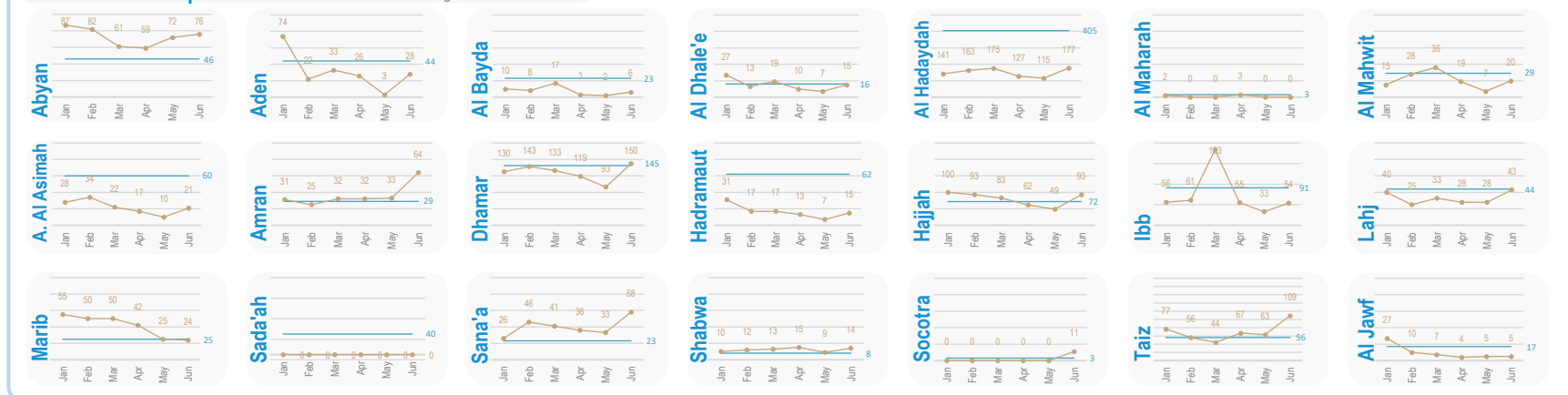
Service Utilization January-June

From January to June **5,335** children have received life-saving services in WHO-supported TFCs, of which **1,155 (22%)** are children under 6 months. The quality of service is evidenced by the decrease in the default rate and death rate. In June, the cured rate Reached **91%**, the default rate was **6%** and the death rate was only **2%**.

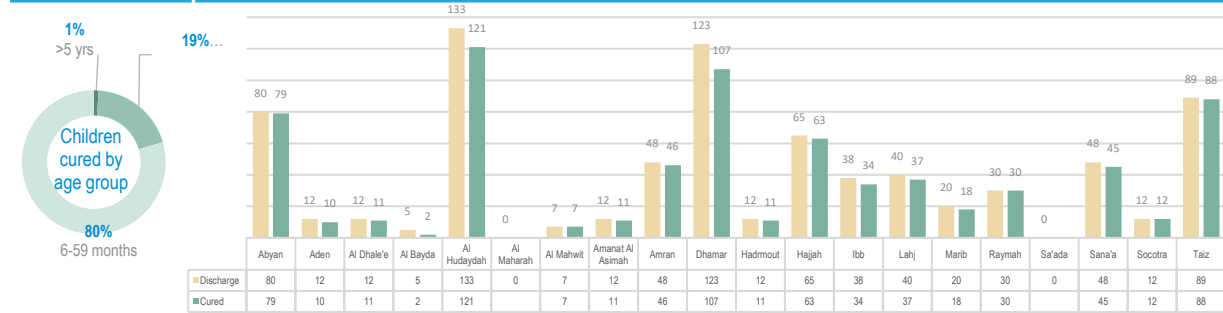
Behind each child, a caregiver was counselled on IYCF best practices, **5,335** caregivers in total. Each caregiver received 10 counselling sessions per hospital stay. In 2020, **26,675** counselling sessions were conducted in TFCs. The increase of equitable access and utilization of quality preventive nutrition services in TFCs, such as IYCF counselling, is evidenced by the decrease in the relapse rate, at **2%** on average per month, throughout the 2020.



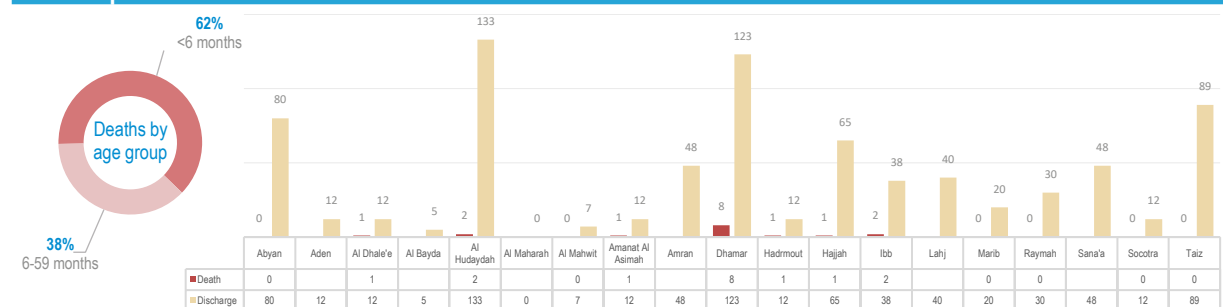
Service Utilization per Governorate



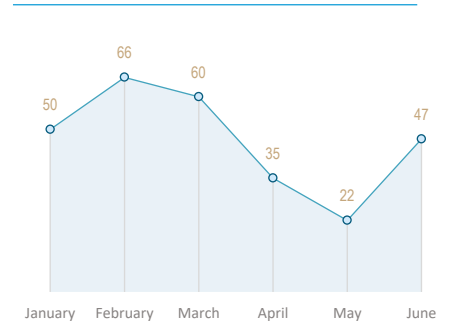
Cured Children per Governorate in June



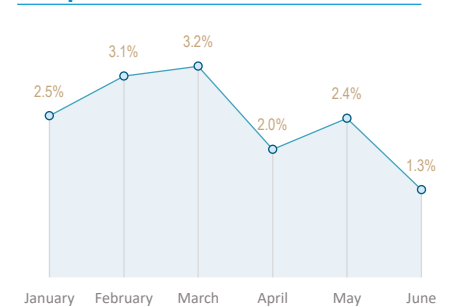
Deaths per Governorate in June



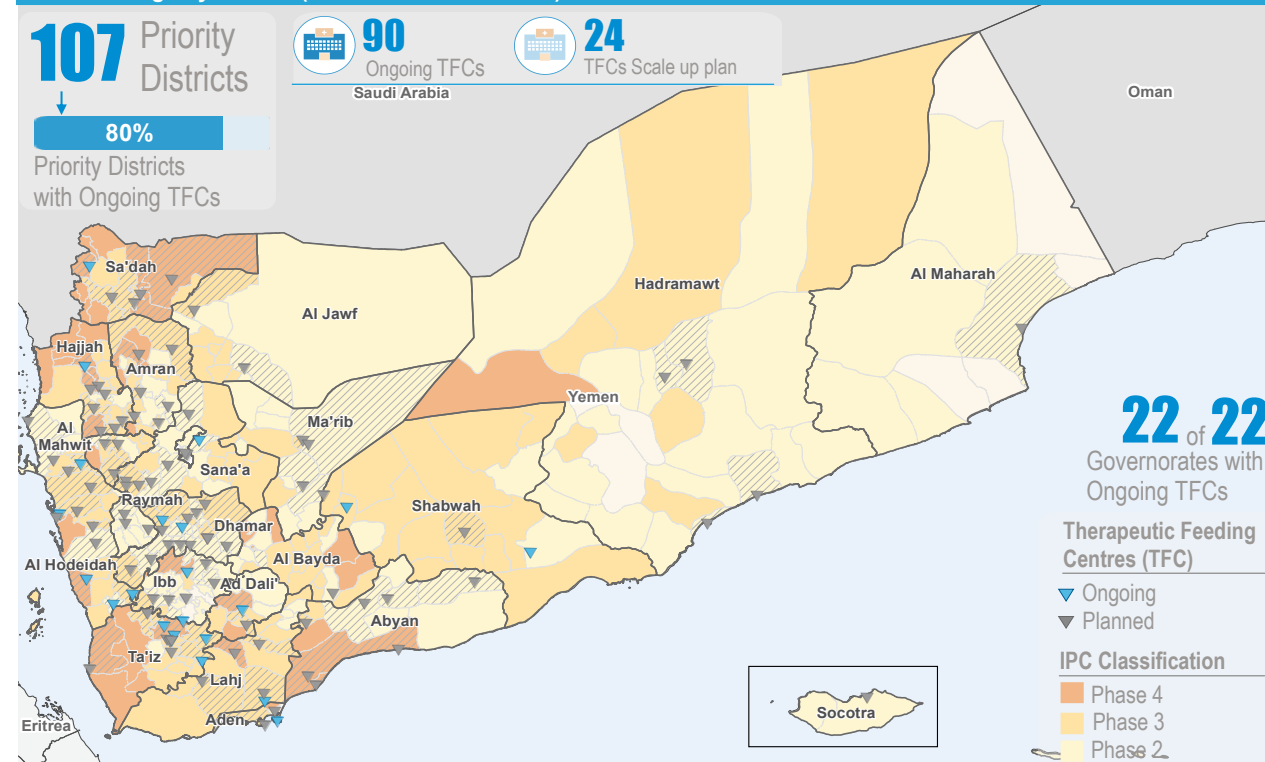
Oedema



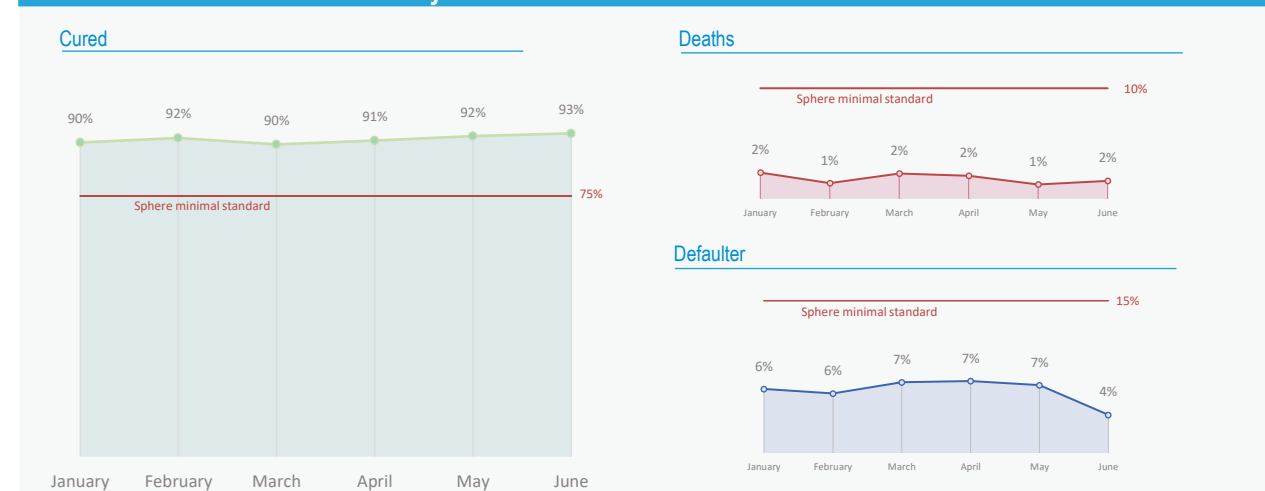
Relapse



TFC Coverage by district (with IPC Classification)



TFCs Performance Indicators January-June



Main performance indicators per Governorate January- June

