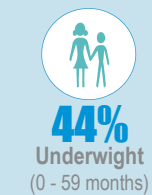
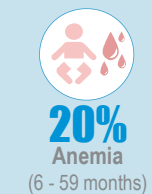
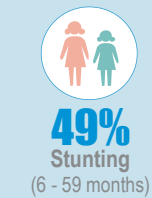
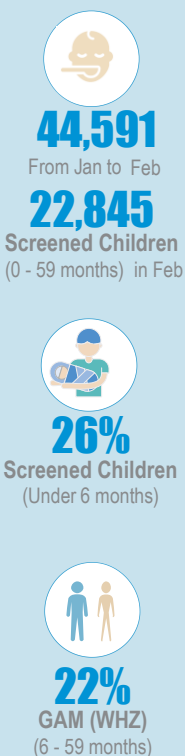
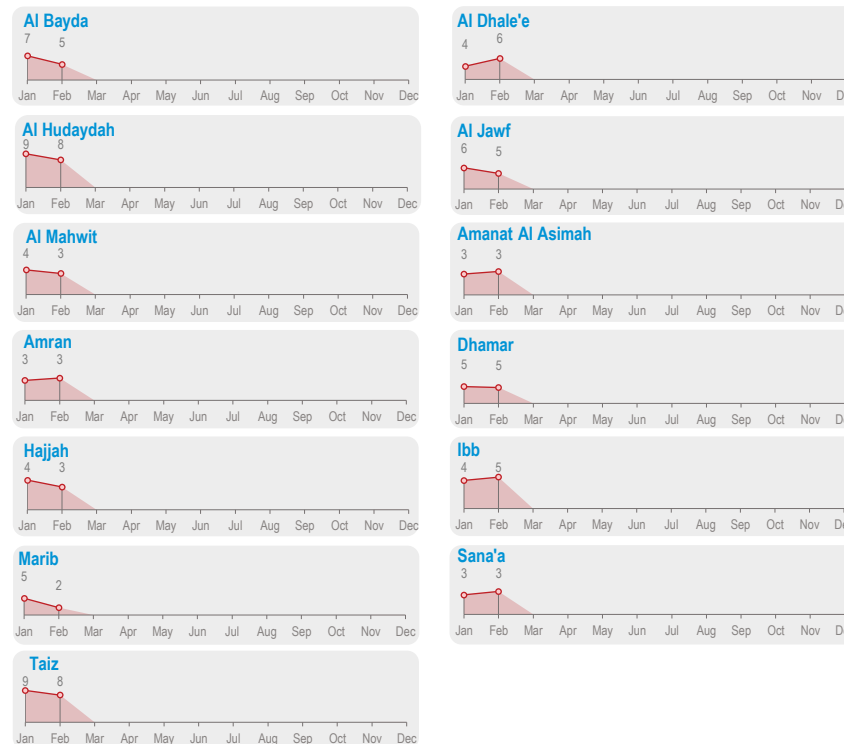
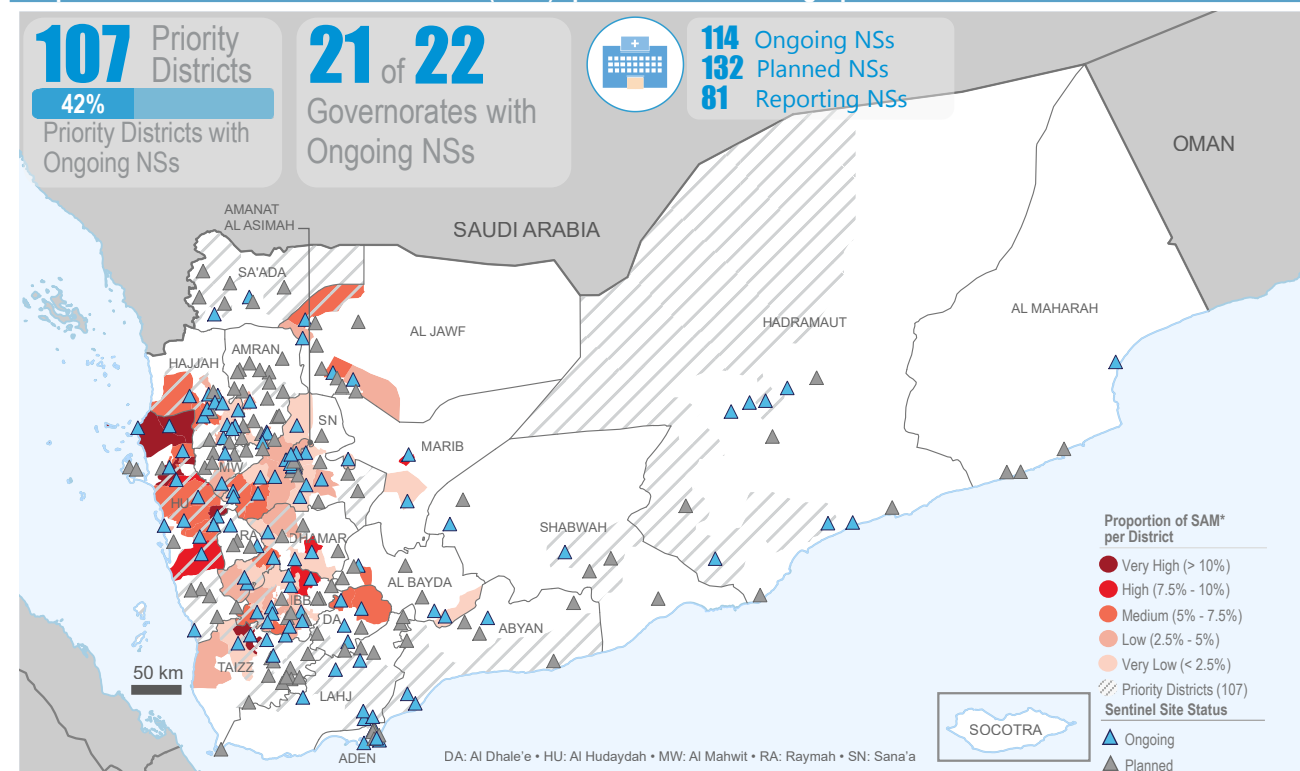


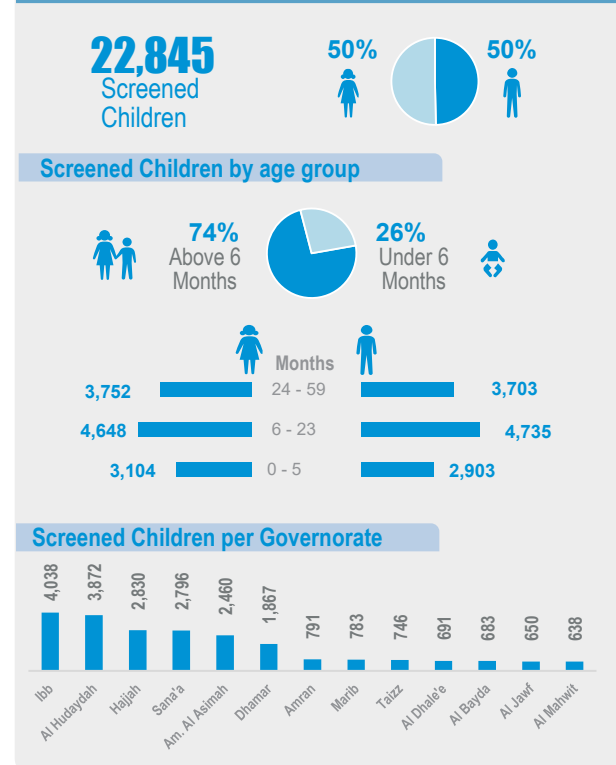
Key Figures Feb 2020



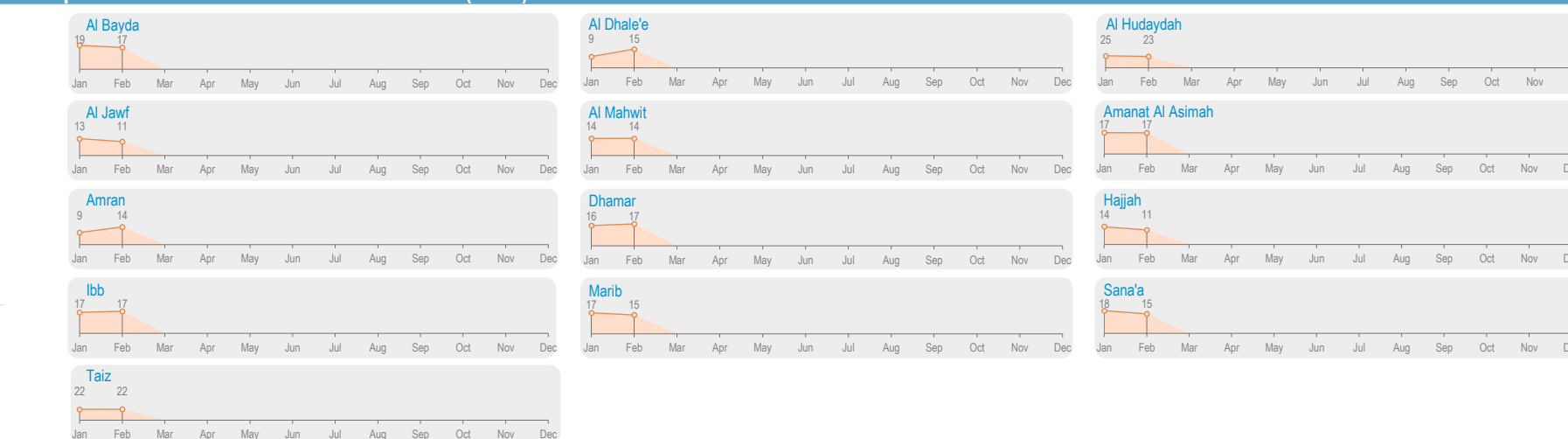
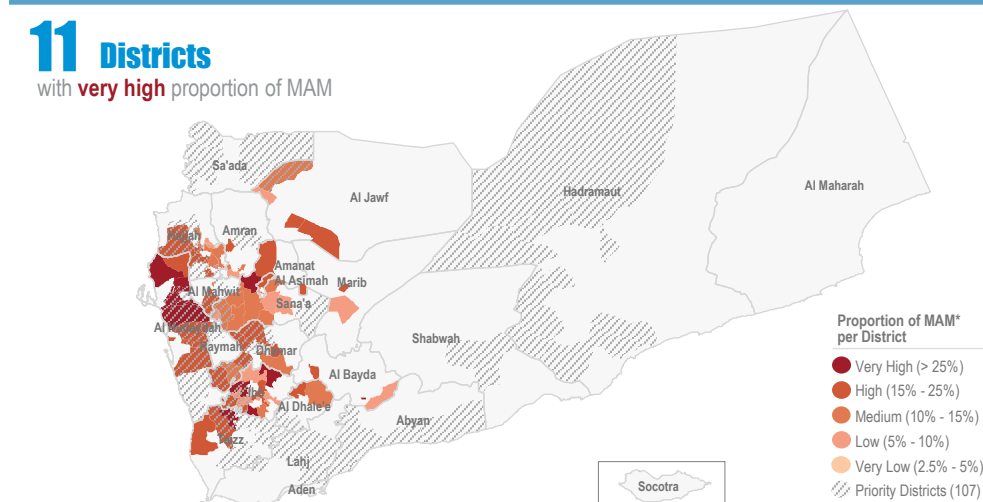
Proportion† of Severe Acute Malnutrition (SAM)* per District and Geographical Presence of Nutrition Sentinel Sites



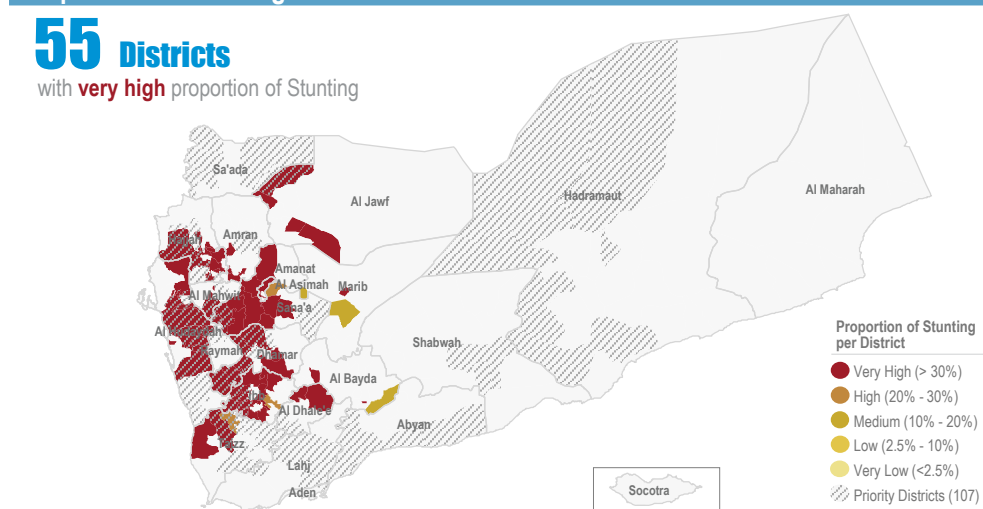
Screened Children Feb



Proportion† of Moderate Acute Malnutrition (MAM)* Feb



Proportion† of Stunting Feb



Objectives of the Yemen Nutrition Surveillance System

- monitor children nutritional status
- early detection of malnutrition and case referral
- share information and trigger alert verification.

Methodology:

Facility-based sentinel site surveillance system, established in district hospitals across the country

The system provides proportion of children under five found suffering from any forms of malnutrition, out of the total children screened

It is not a formal survey using sampling methods to produce representative results. The results only reflect the status of children who have attended the health facility in the month under review.

The system tracks WHO Global core nutrition indicators: Stunting, Wasting, Exclusive breastfeeding, Anemia.

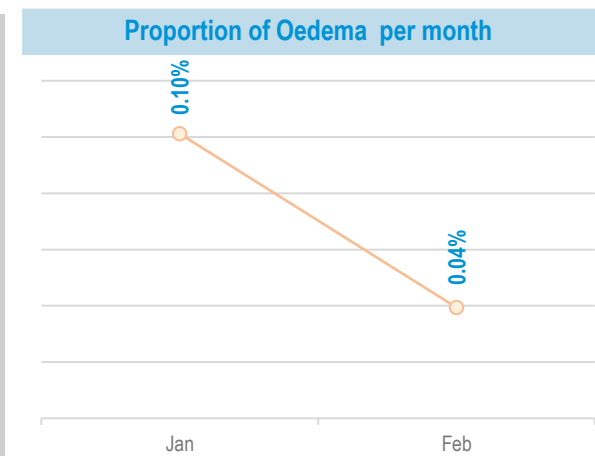
This bulletin is based on reports received by the health facility surveillance MoPHP teams.

WHO supports the MoPHP and constantly works to expand coverage and improve data quality.

With WHO technical support to national health authorities. Funded by the World Bank.

Summary for Nutrition Indicators Feb 2020

Governorate	# of Screened Children (0 - 5)	# of Screened Children (6 - 59)	Proportion of GAM (0 - 5)	Acute Malnutrition by Z- Score				Acute Malnutrition by MUAC				Underweight		Stunting		Exclusive Breastfeeding		Anemia		Oedema	
				# of MAM	Proportion of MAM	# of SAM	Proportion of SAM	# of MAM	Proportion of MAM	# of SAM	Proportion of SAM	# of Underweight	Proportion of Under weight	# of Stunting	Proportion of Stunting	# of EBF	Proportion of EBF (Yes)	# of Anemia	Proportion of Anemia	# of Oedema	Proportion of Oedema
Al Bayda	201	482	0.5%	83	17%	22	5%	48	10%	10	2%	210	31%	159	33%	-	-	58	14%	0	0.0%
Al Dhale'e	267	424	0.0%	63	15%	26	6%	54	13%	17	4%	255	37%	168	40%	18	6%	3	1%	0	0.0%
Al Hudaydah	1,005	2,867	10.4%	662	23%	223	8%	675	24%	223	8%	2,004	52%	1,624	57%	115	13%	627	35%	0	0.0%
Al Jawf	60	590	0.0%	65	11%	27	5%	64	11%	14	2%	226	35%	261	44%	13	22%	197	33%	0	0.0%
Al Mahwit	211	427	0.0%	58	14%	13	3%	56	13%	17	4%	245	38%	205	48%	-	-	26	6%	0	0.0%
Amanat Al Asimah	807	1,653	0.0%	277	17%	57	3%	134	8%	33	2%	1,099	45%	840	51%	202	24%	313	26%	0	0.0%
Amran	266	525	0.4%	73	14%	17	3%	82	16%	19	4%	307	39%	284	54%	-	-	224	43%	1	0.1%
Dhahar	344	1,523	11.0%	261	17%	70	5%	246	16%	79	5%	1,014	54%	958	63%	102	27%	274	18%	3	0.2%
Hajjah	834	1,996	0.0%	227	11%	65	3%	227	11%	65	3%	1,178	42%	1,057	53%	89	18%	295	22%	0	0.0%
Ibb	1,095	2,943	14.0%	514	17%	133	5%	448	15%	99	3%	1,907	47%	1,416	48%	123	12%	462	16%	5	0.1%
Marib	174	609	0.0%	91	15%	13	2%	78	13%	17	3%	239	31%	129	21%	22	12%	61	12%	0	0.0%
Sana'a	559	2,237	0.0%	345	15%	75	3%	228	10%	50	2%	1,111	40%	1,027	46%	207	35%	96	5%	0	0.0%
Taizz	184	562	0.0%	122	22%	44	8%	70	12%	22	4%	292	39%	205	36%	60	31%	156	28%	0	0.0%

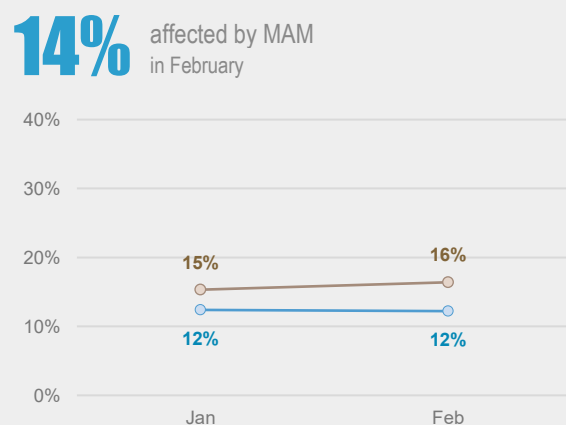


Acute Malnutrition by MUAC

Proportion of Moderate Acute Malnutrition (MAM) < 125 mm and >= 115 mm

14% affected by MAM in February

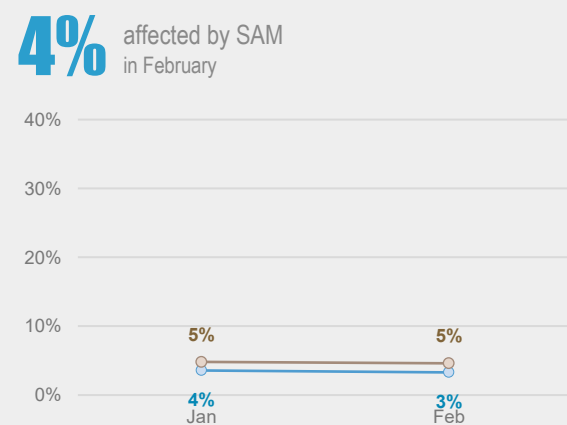
15% affected by MAM in January



Proportion of Severe Acute Malnutrition (SAM) < 115 mm

4% affected by SAM in February

5% affected by SAM in January

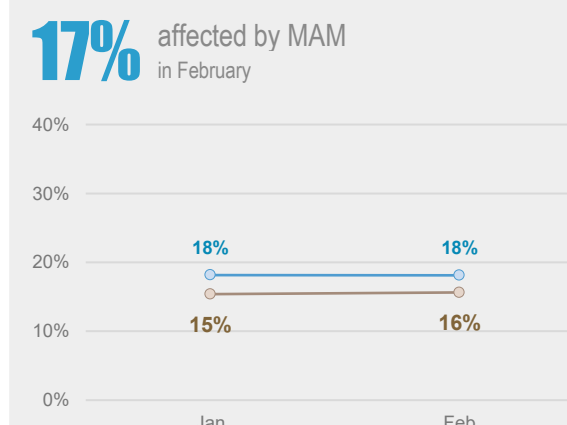


Acute Malnutrition by Weight/Height Z Score (WHZ)

Proportion of Moderate Acute Malnutrition (MAM) < -2 z-score and >= -3 z-score

17% affected by MAM in February

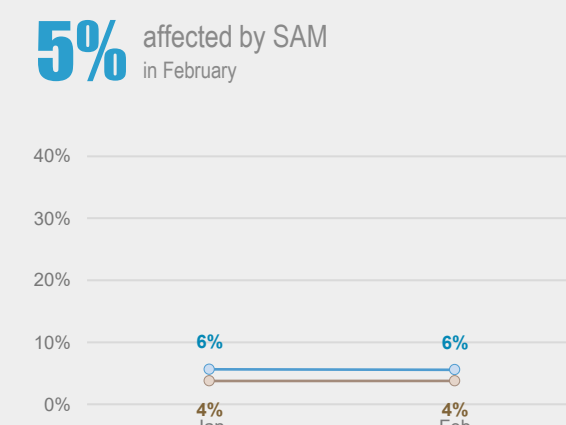
15% affected by MAM in January



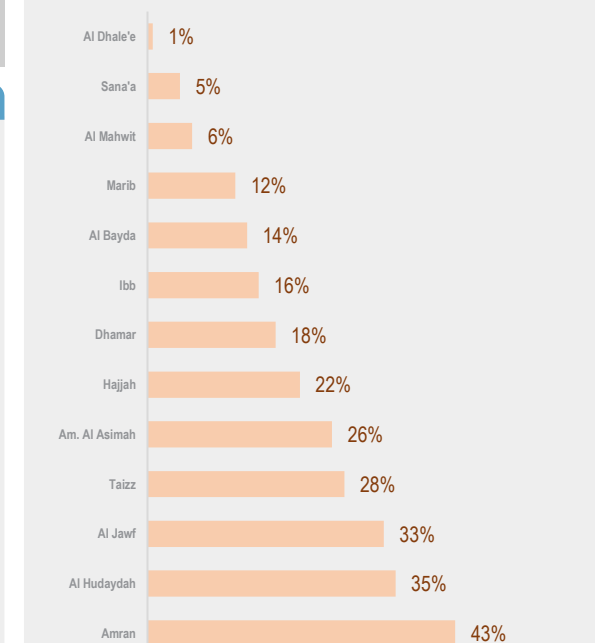
Proportion of Severe Acute Malnutrition (SAM) < -3 z-score

5% affected by SAM in February

4% affected by SAM in January



Anemia Feb

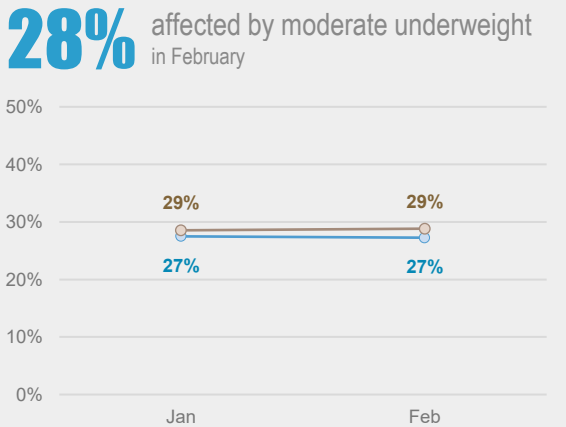


Underweight by Weight/Age Z Score

Moderate < -2 z-score and >= -3 z-score

28% affected by moderate underweight in February

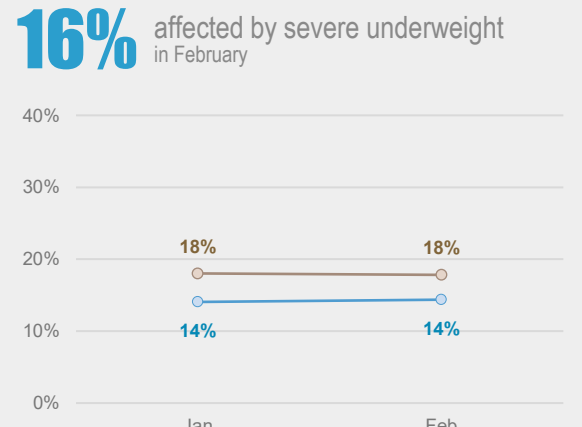
29% affected by moderate underweight in January



Severe < -3 z-score

16% affected by severe underweight in February

18% affected by severe underweight in January

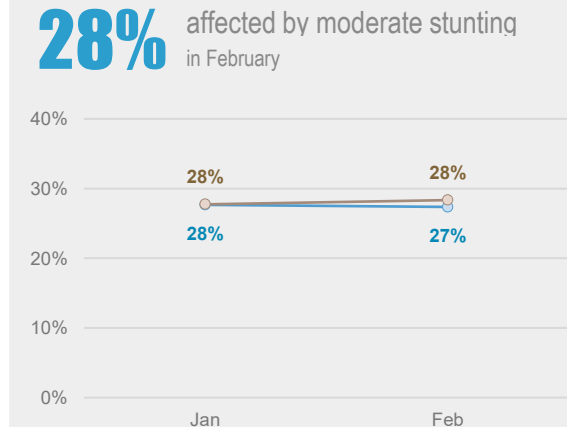


Chronic Malnutrition (Stunting) by Height/Age Z Score

Moderate < -2 z-score and >= -3 z-score

28% affected by moderate stunting in February

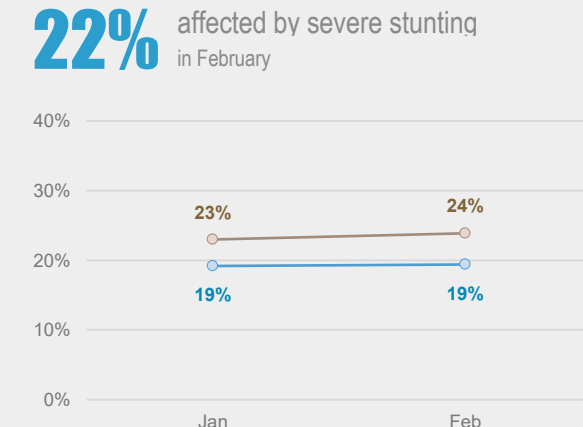
28% affected by moderate stunting in January



Severe < -3 z-score

22% affected by severe stunting in February

19% affected by severe stunting in January



Exclusive Breastfeeding Feb

