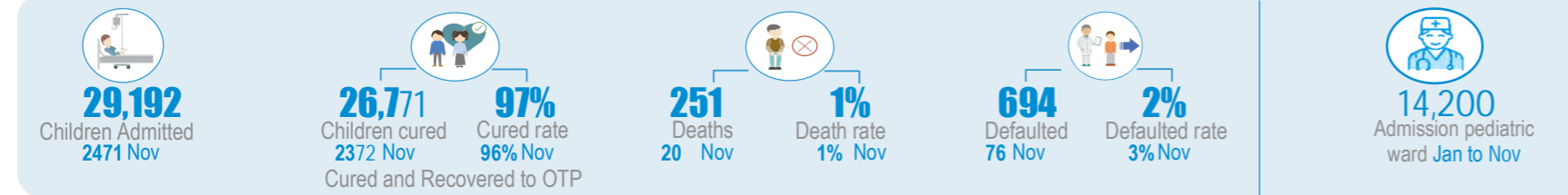


Key Figures - From January to Nov

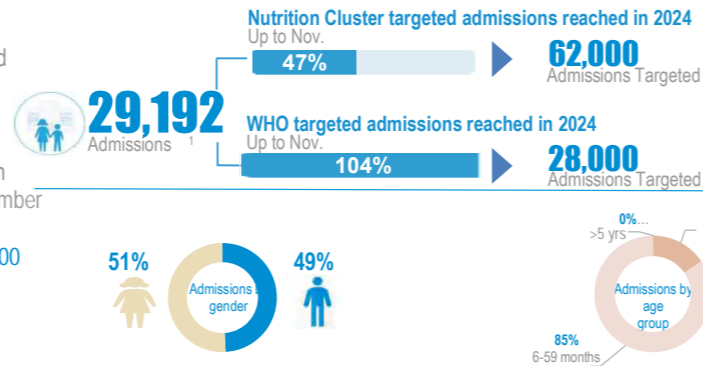


Service Utilization January-November

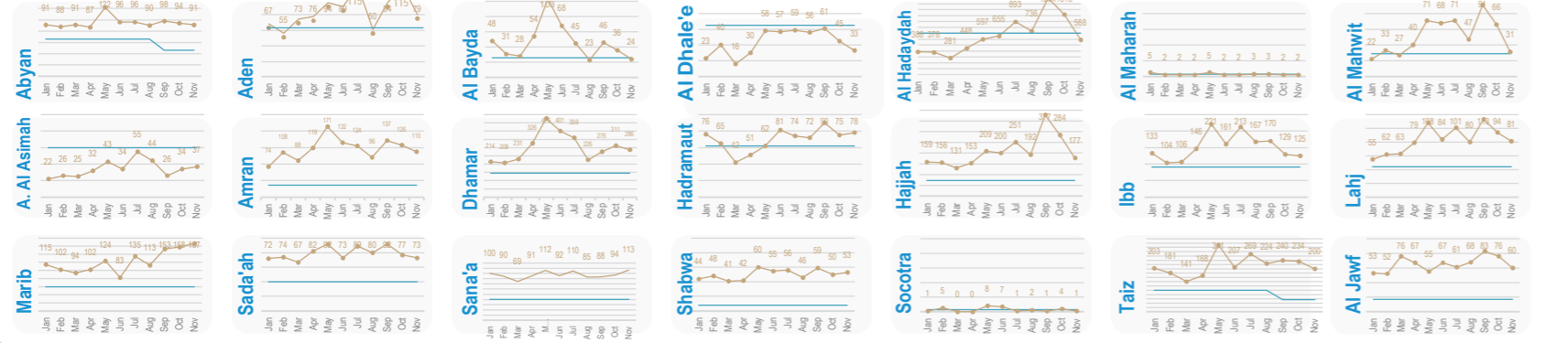
From January to November 29,192 children have received life-saving services in WHO-supported TFCs, of which 4,430 (15%) are children under 6 months.

The quality of service is evidenced by the recovery (97%) and death (1%) rates. Each caregiver (29,192) in total benefits from at least 5 counselling sessions per hospital stay on IYCF best practices. This might contribute to the observed decrease in relapse rate (2%) in November

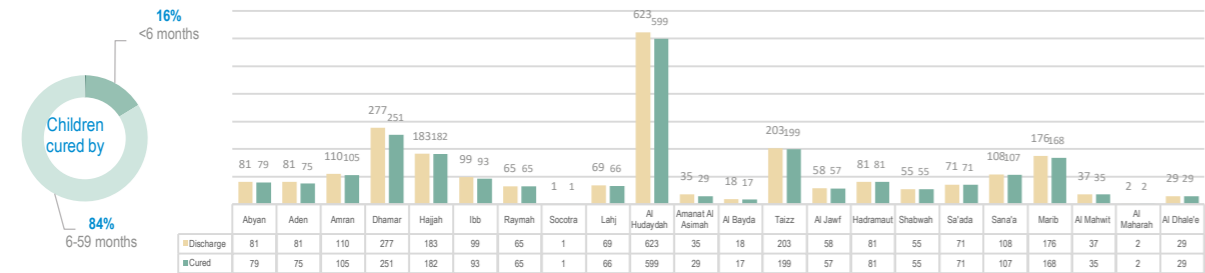
By ensuring the care for most critical cases in pediatric wards in referral hospitals with TFCs, 14,200 children were admitted from Jan to Nov in these referral hospitals for intensive care.



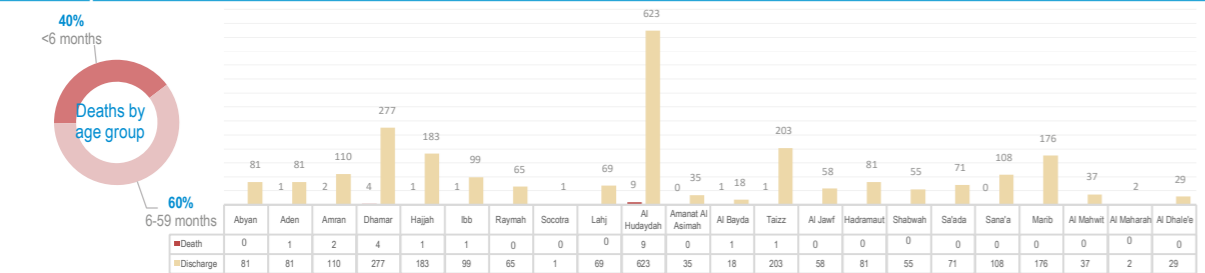
Service Utilization per Governorate



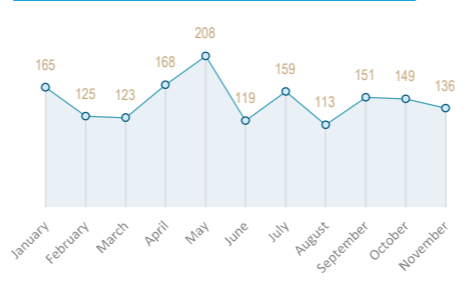
Cured Children per Governorate November



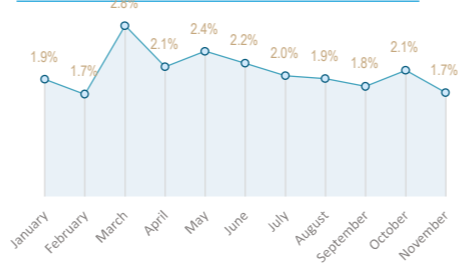
Deaths per Governorate November



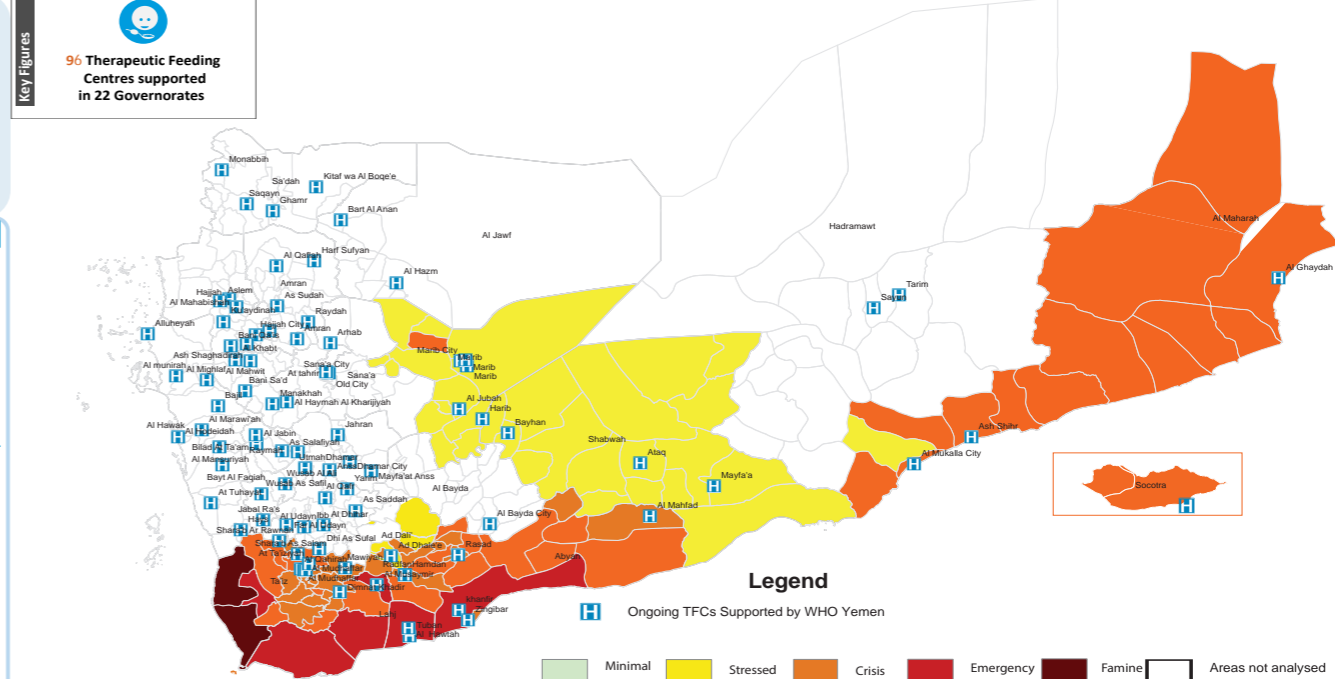
Oedema



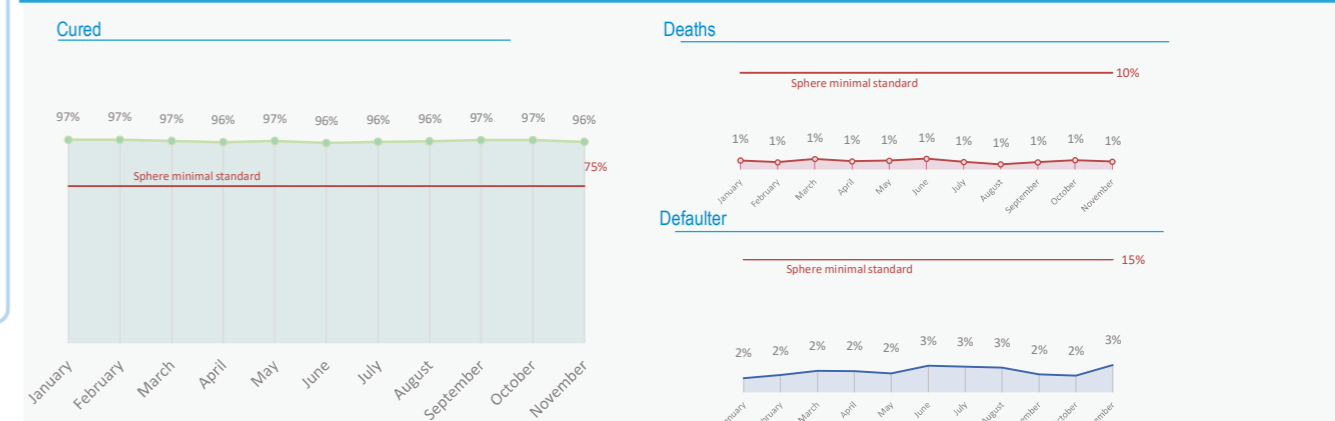
Relapse



TFC Coverage by district (with IPC Classification)



TFCs Performance Indicators January-November



Main performance indicators per Governorate January- November

