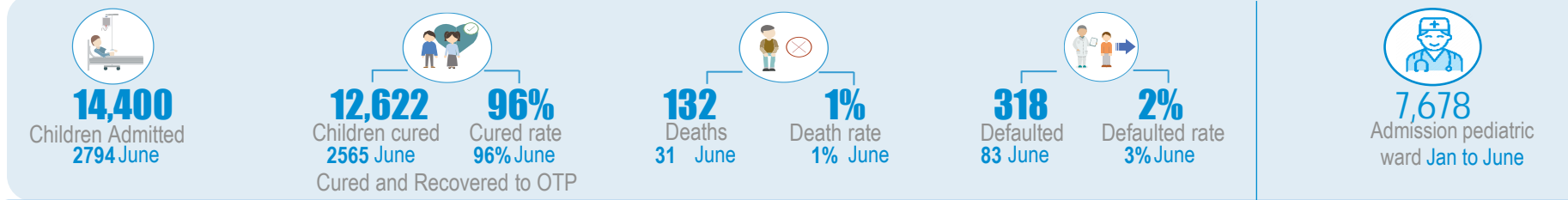


## Key Figures - From January to June

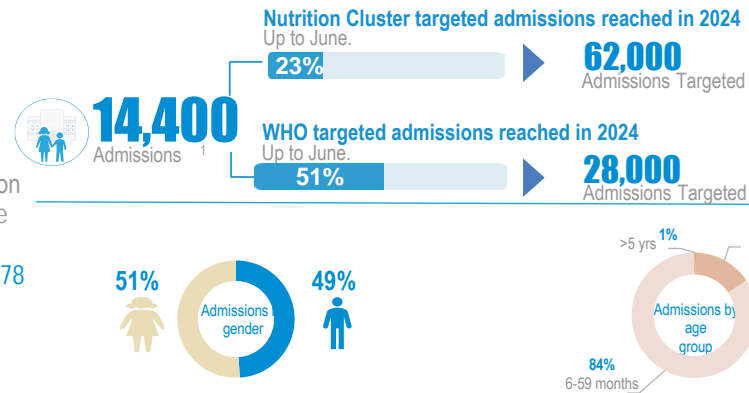


## Service Utilization January-June

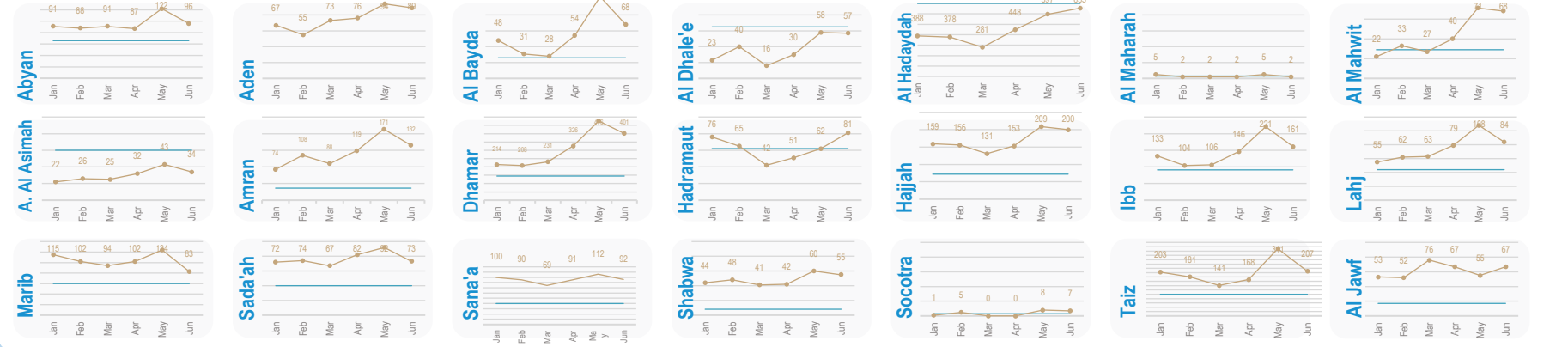
From January to June 14,400 children have received life-saving services in WHO-supported TFCs, of which 3,741 (15%) are children under 6 months.

The quality of service is evidenced by the recovery (96%) and death (1%) rates. Each caregiver (24,151) in total benefits from at least 5 counselling sessions per hospital stay on IYCF best practices. This might contribute to the observed decrease in relapse rate (2%) in June

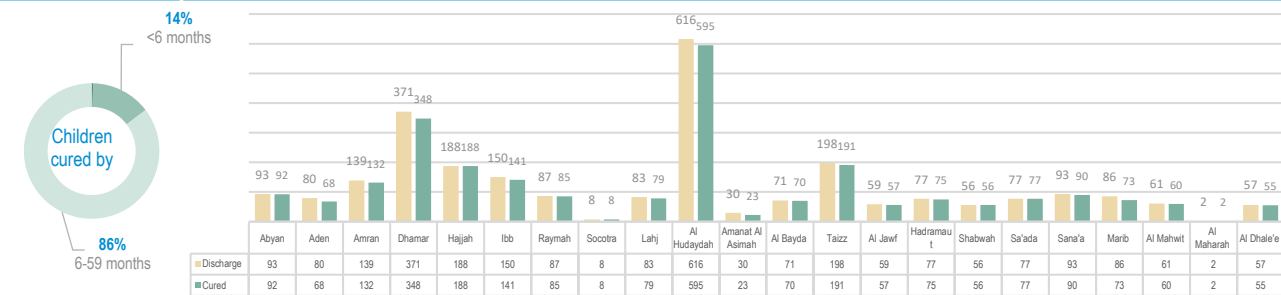
By ensuring the care for most critical cases in pediatric wards in referral hospitals with TFCs, 7,678 children were admitted from Jan to June in these referral hospitals for intensive care.



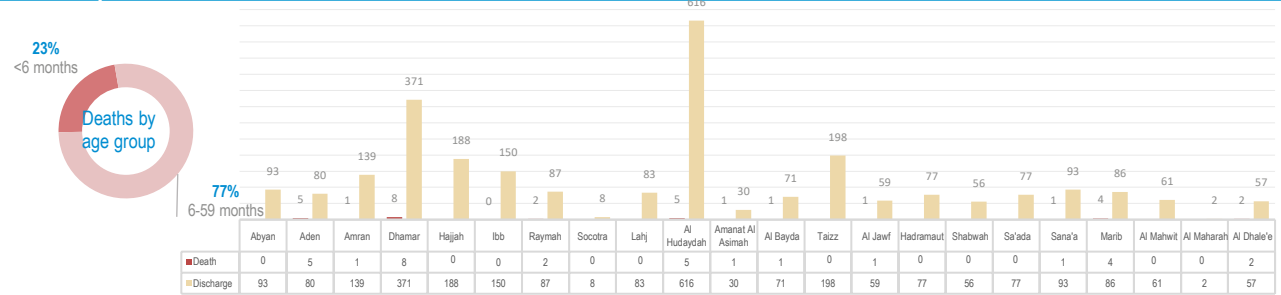
## Service Utilization per Governorate



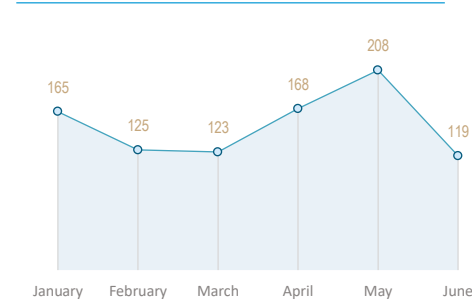
## Cured Children per Governorate June



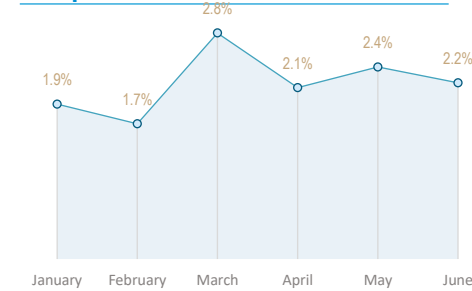
## Deaths per Governorate June



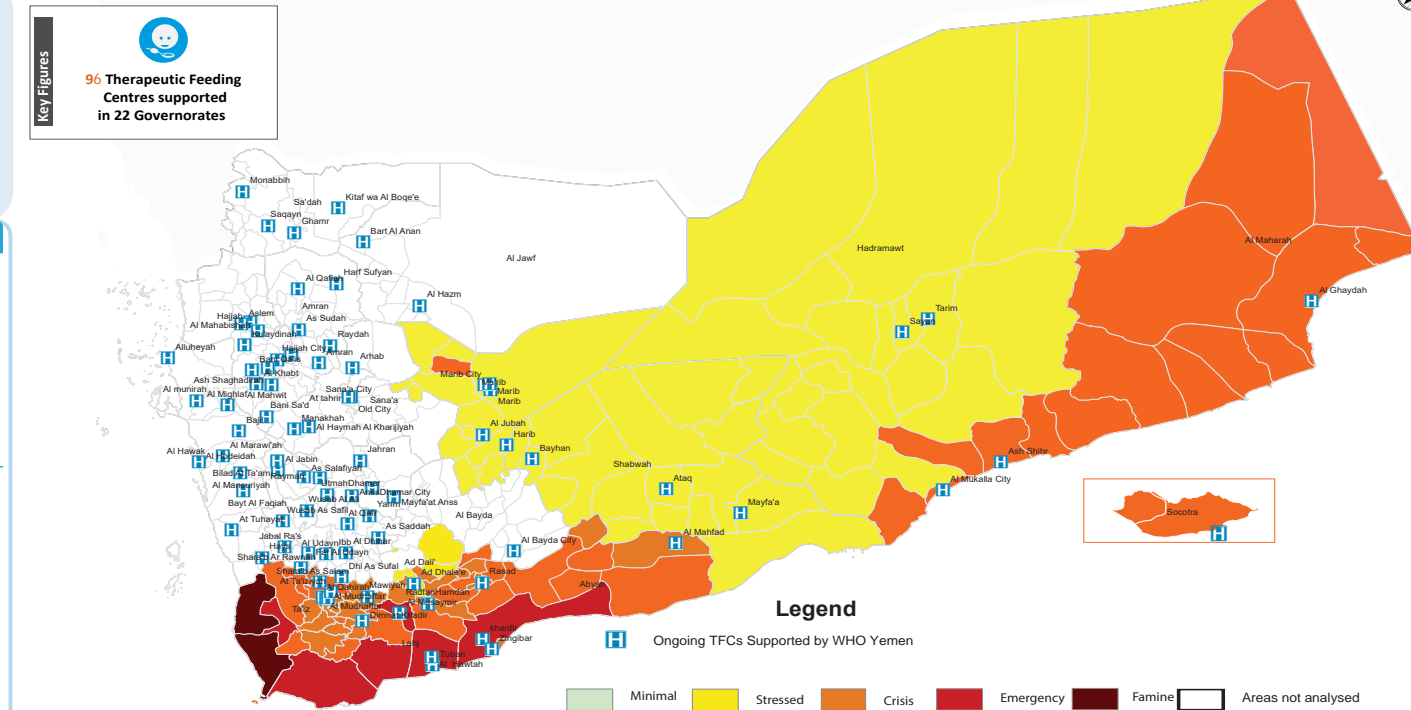
## Oedema



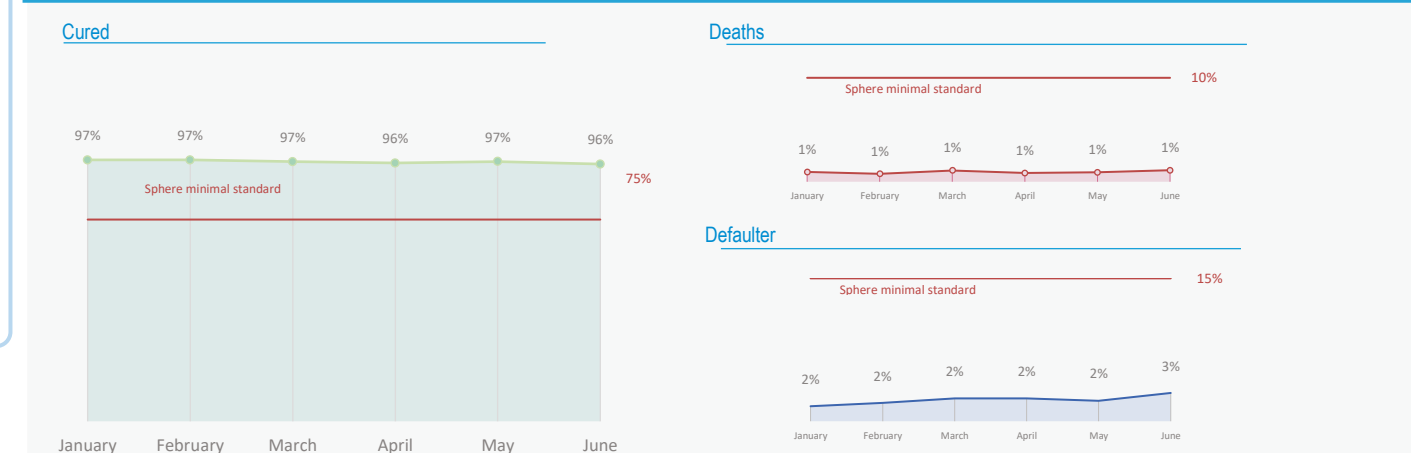
## Relapse



## TFC Coverage by district (with IPC Classification)



## TFCs Performance Indicators January-June



## Main performance indicators per Governorate January-June

