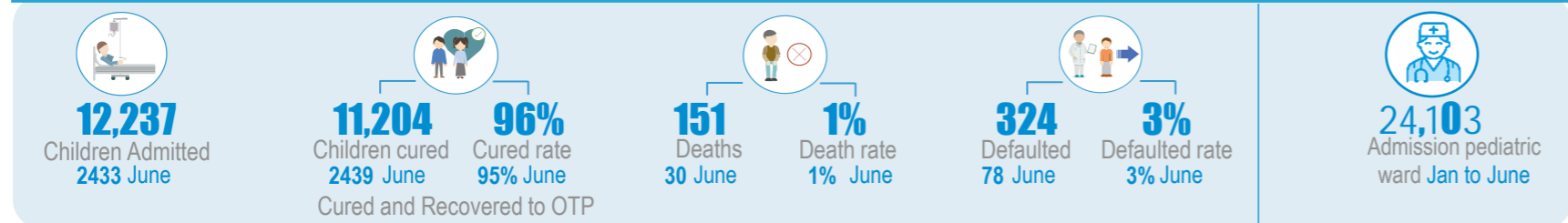


Key Figures - From January to June

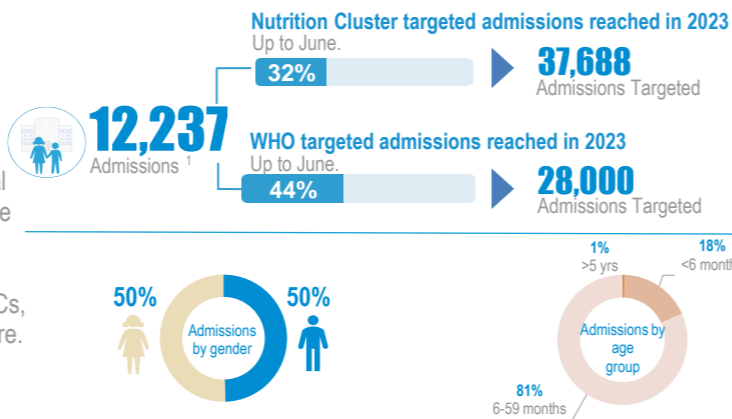


Service Utilization January-June

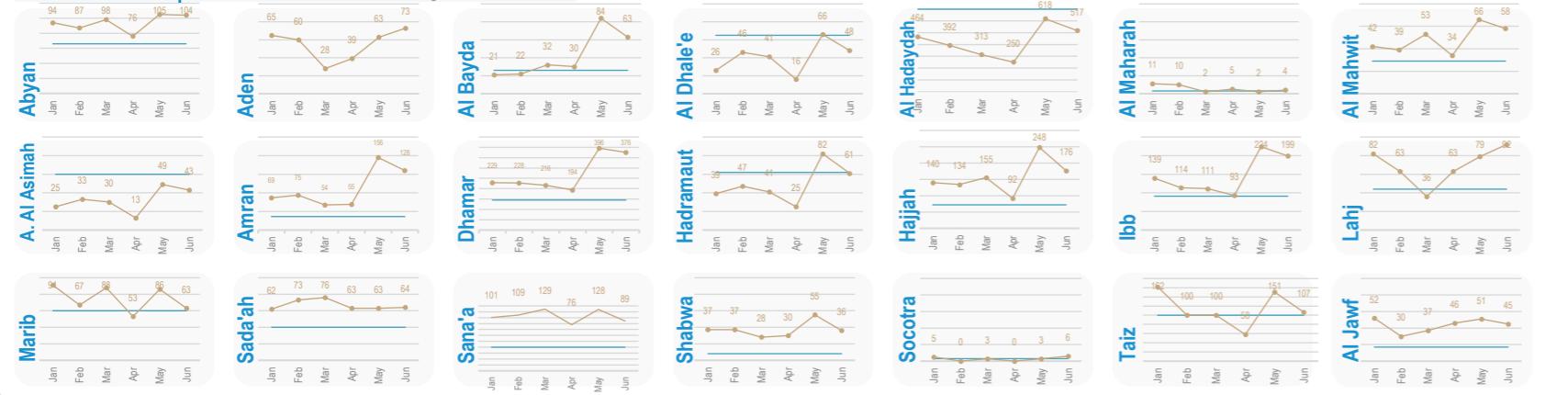
From January to June 12,237 children have received life-saving services in WHO-supported TFCs, of which 2,178 (18%) are children under 6 months.

The quality of service is evidenced by the recovery (95%) and death (1%) rates. Each caregiver (12,237) in total, benefits from at least 5 counselling sessions per hospital stay on IYCF best practices. This might contribute to the observed decrease in relapse rate (2%) in June

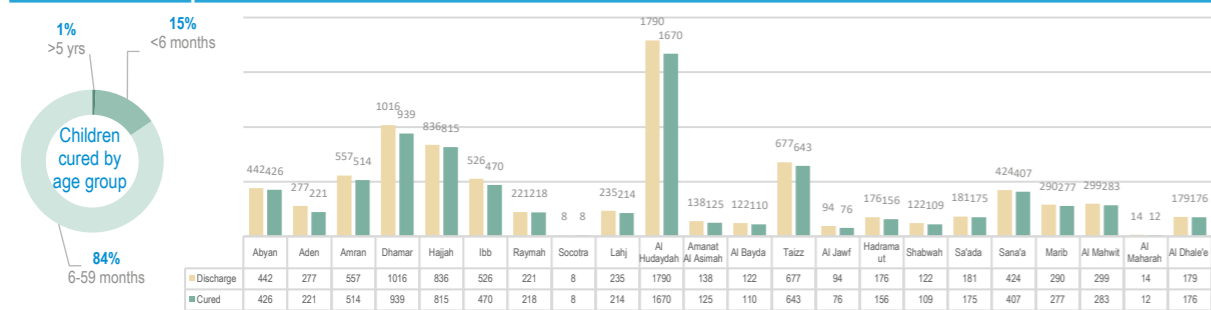
By ensuring the care for most critical cases in pediatric wards in referral hospitals with TFCs, 24,103 children were admitted from Jan to June in these referral hospitals for intensive care.



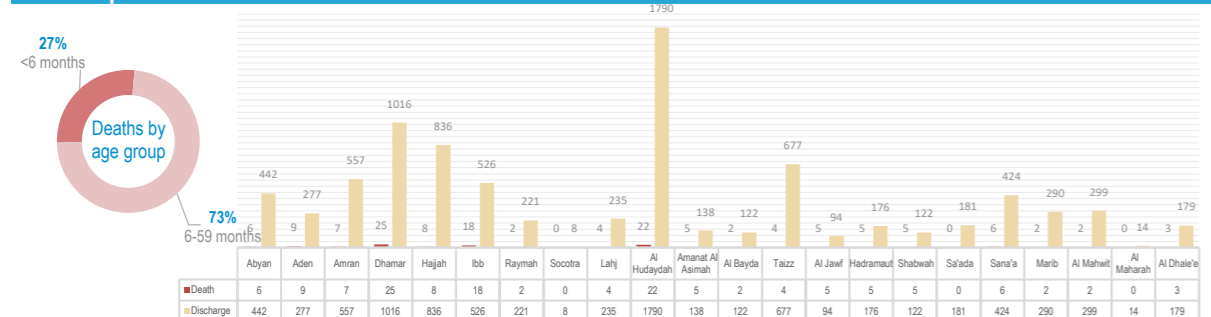
Service Utilization per Governorate



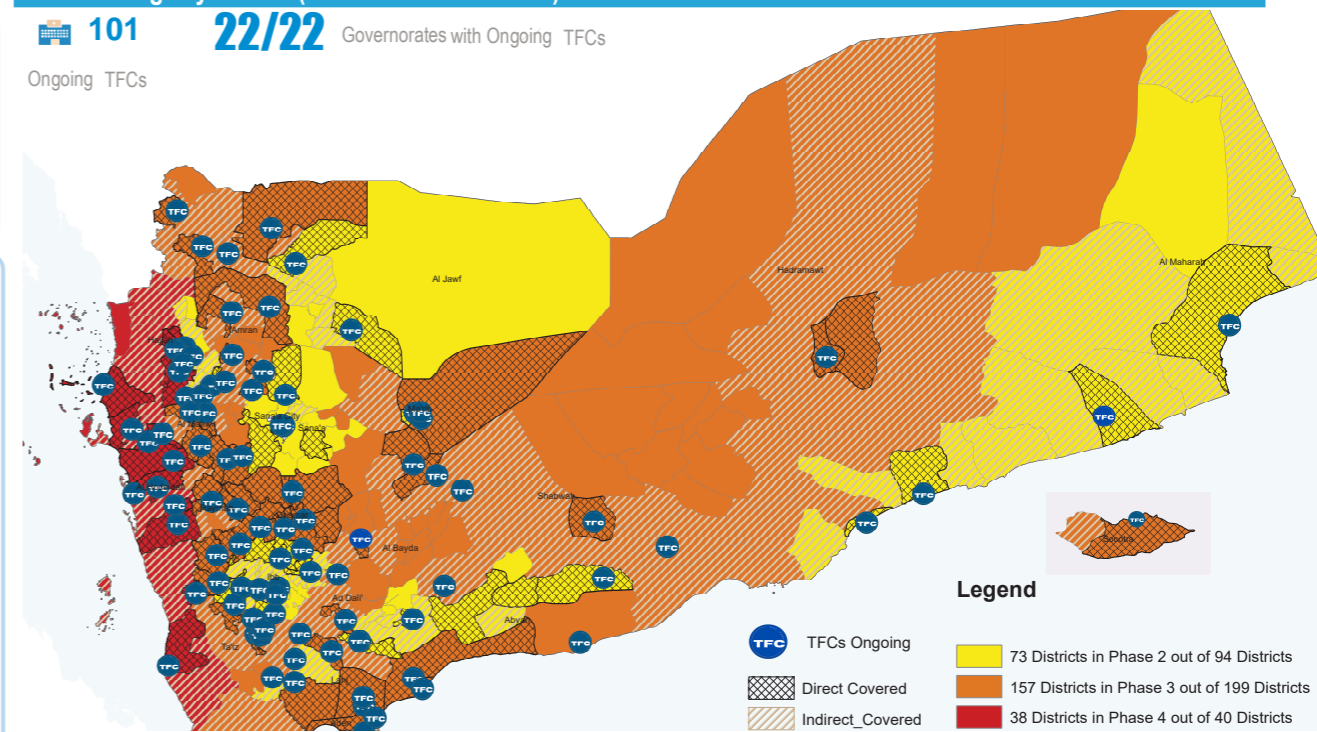
Cured Children per Governorate from Jan to June



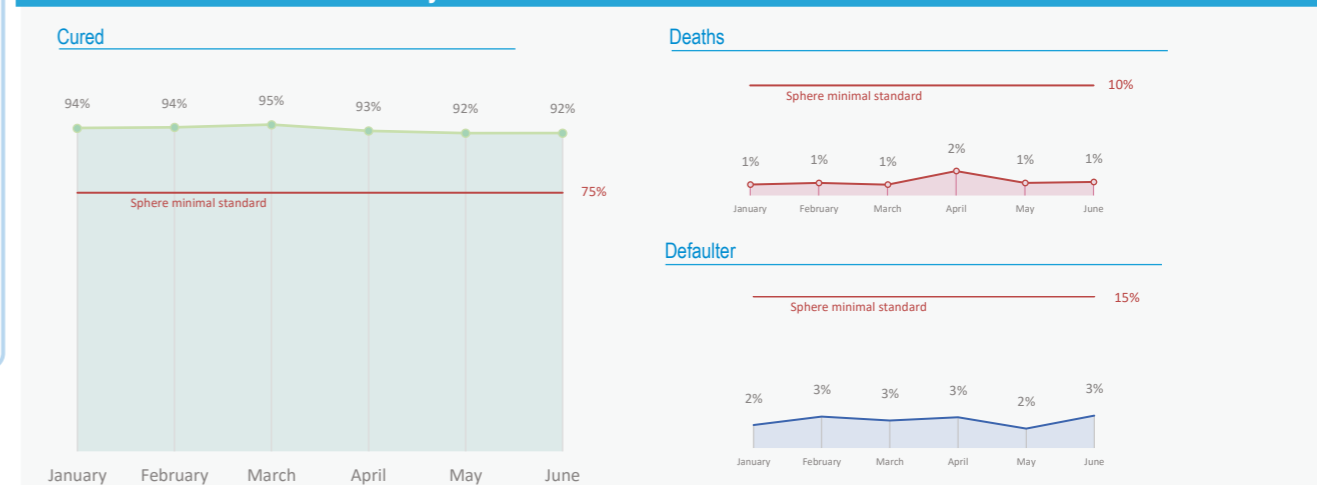
Deaths per Governorate from Jan to June



TFC Coverage by district (with IPC Classification)



TFCs Performance Indicators January-June



Main performance indicators per Governorate January- June

