

Screened Children 2024

719,227

Key Figures
Sep 2024



85,788

Screened Children
(0 - 59 months) in Sep



19%

Screened Children
(Under 6 months)



29%

GAM (WHZ)
(6 - 59 months)



4.9%

Stunting
(6 - 59 months)



21%

Anemia
(6 - 59 months)



5.2%

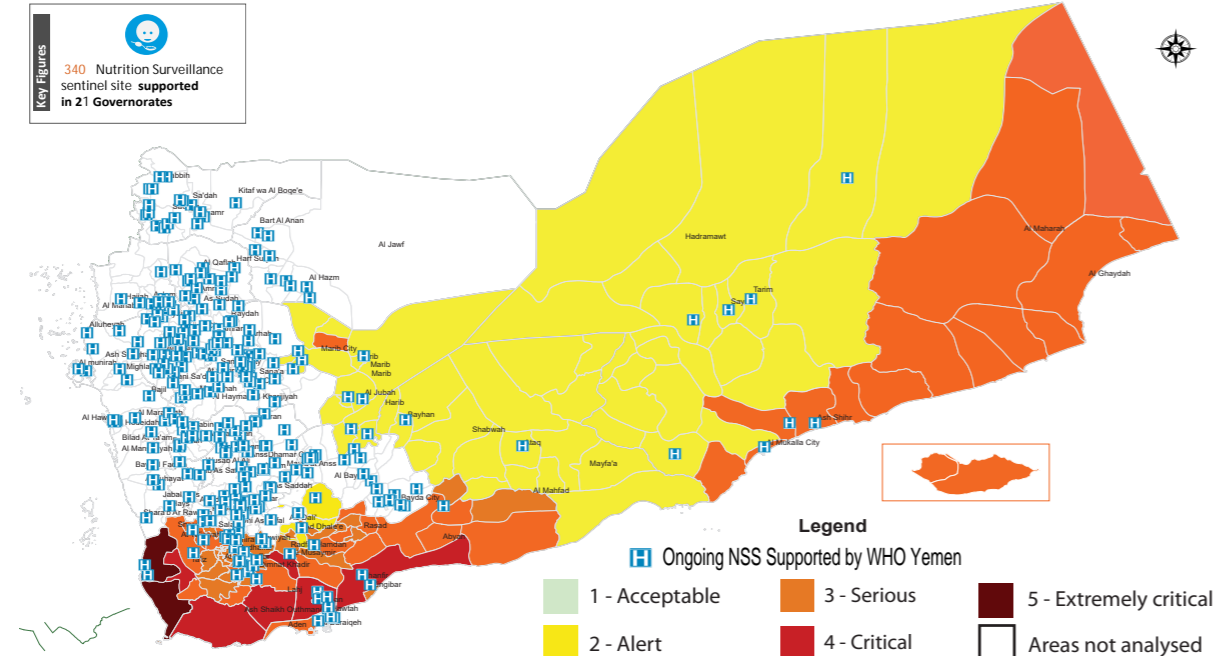
Underweight
(0 - 59 months)



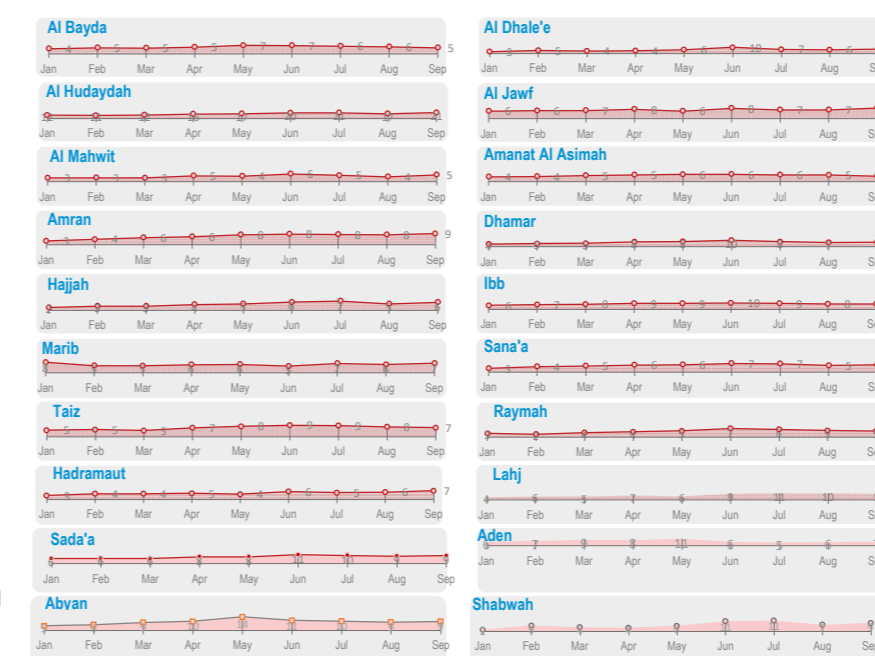
15%

Exclusive Breastfeeding
(0 - 6 months)

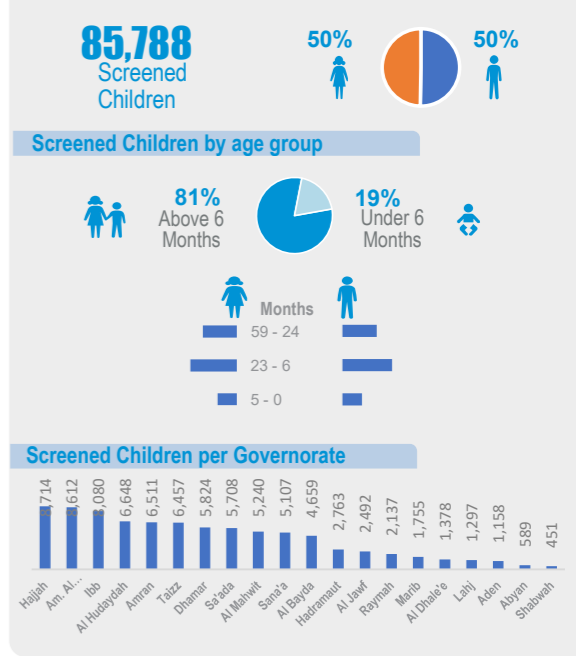
Geographical Presence of Nutrition Sentinel Sites - IPC AMN



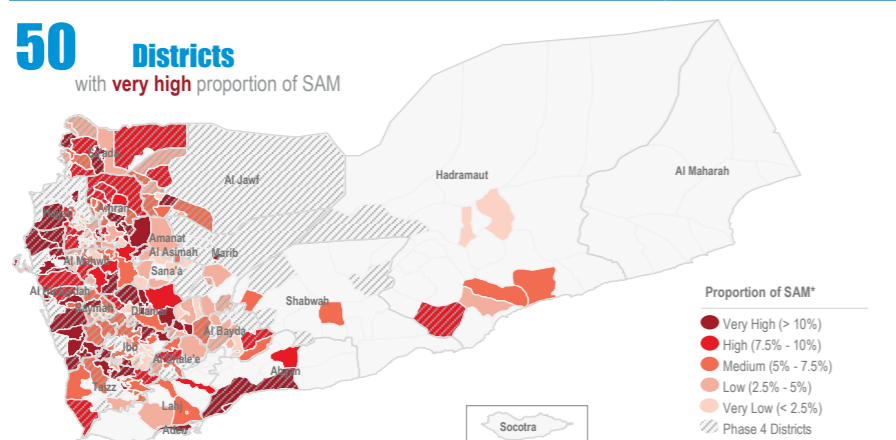
Proportion ↑ of Severe Acute Malnutrition (SAM) Monthly Trend Reporting per Gov



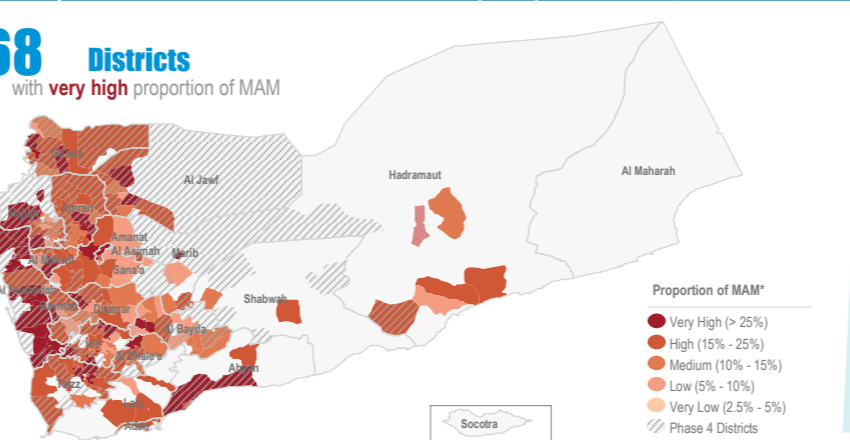
Screened Children



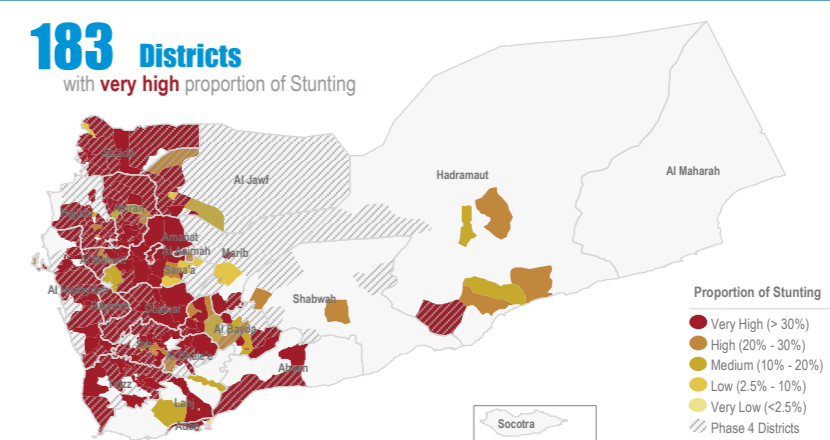
Proportion ↑ of Severe Acute Malnutrition (SAM)* Sep



Proportion ↑ of Moderate Acute Malnutrition (MAM)* Sep



Proportion ↑ of Stunting Sep



Objectives of the Yemen Nutrition Surveillance System

Monitor children nutritional status, early detection of malnutrition and case referral. Share information and trigger alert verification..

Methodology

Nutritional assessment in NSS is normally performed through the measurement of child's weigh,height/length, MUAC, age,hemoglobin level, breastfeeding status and oedema.It is Facility-based surveillance system, established mainly in district hospitals across the country.

The system provides proportion of children under five years found suffering from any forms of malnutrition, out of the total children screened. It is not a formal survey using sampling methods to produce representative results.

The results only reflect the status of children who have attended the health facility in the month under review.The system tracks Global core nutrition indicators: Stunting, Wasting, Exclusive breastfeeding and Anemia.This bulletin is based on reports received by the health facility surveillance MoPHP teams*.

WHO supports the MoPHP and constantly works to expand coverage and improve data quality, funded by World Bank.

Additional screening of 34,229 children via mobile teams and pediatric wards integrated with TFC to ensure assessment of children in remote areas is conducted with ensuring to refer children with malnutrition forms to the nearest nutrition services to continue receiving treatment and follow up

Summary for Nutrition Indicators Sep 2024 in Reporting Gov

Governorate	# of Screened Children (0-5)	# of Screened Children (6-59)	Proportion of GAM (0-5)	Acute Malnutrition by Z- Score				Acute Malnutrition by MUAC				Underweight		Stunting		Exclusive Breastfeeding		Anemia		Oedema	
				# of MAM	Proportion of MAM	# of SAM	Proportion of SAM	# of MAM	Proportion of MAM	# of SAM	Proportion of SAM	# of Underweight	Proportion of Under weight	# of Stunting	Proportion of Stunting	# of EBF	Proportion of EBF (Yes)	# of Anemia	Proportion of Anemia	# of Oedema	Proportion of Oedema
Al Bayda	791	3,868	12.4%	532	14%	186	5%	462	12%	126	3%	1,768	37%	1,381	36%	110	12%	510	17%	2	0.0%
Al Dhale'e	163	1,215	25.8%	262	22%	88	7%	227	19%	116	10%	749	54%	574	47%	42	23%	13	6%	1	0.1%
Al Hudaydah	1,104	5,544	22.0%	1,992	36%	1,180	21%	1,885	34%	1,101	20%	4,788	72%	3,211	58%	142	11%	2,040	38%	1	0.0%
Al Jawf	320	2,172	19.1%	442	20%	186	9%	334	15%	135	6%	1,247	50%	921	42%	54	14%	533	26%	0	0.0%
Al Mahwit	1,037	4,203	11.3%	668	16%	224	5%	534	13%	198	5%	2,239	43%	1,892	45%	232	20%	841	20%	1	0.0%
Amanat Al Asimah	2,145	6,467	19.2%	1,440	22%	300	5%	666	10%	180	3%	3,812	44%	2,934	45%	376	17%	721	13%	2	0.0%
Amran	1,120	5,391	15.8%	1,193	22%	466	9%	1,204	22%	565	10%	3,563	55%	2,912	54%	100	7%	1,380	26%	0	0.0%
Dhamar	1,030	4,794	16.8%	831	17%	336	7%	1,037	22%	369	8%	3,363	58%	2,924	61%	114	10%	642	14%	11	0.2%
Hadramaut	1,268	1,495	13.2%	231	15%	100	7%	139	9%	40	3%	695	25%	302	20%	247	19%	134	42%	0	0.0%
Hajjah	1,267	7,447	11.4%	1,088	15%	439	6%	1,071	14%	436	6%	4,273	49%	3,641	49%	134	9%	2,088	28%	1	0.0%
Ibb	1,916	6,164	18.8%	1,347	22%	508	8%	999	16%	362	6%	4,146	51%	3,018	49%	325	15%	993	16%	35	0.4%
Lahj	219	1,078	18.7%	262	24%	102	9%	172	16%	65	6%	596	46%	322	30%	91	39%	225	23%	0	0.0%
Marib	194	1,561	14.9%	253	16%	114	7%	185	12%	50	3%	728	41%	593	38%	54	24%	168	15%	4	0.2%
Raymah	312	1,825	24.7%	357	20%	89	5%	322	18%	78	4%	1,492	70%	1,294	71%	7	2%	475	26%	1	0.0%
Sa'ada	580	5,128	17.6%	1,268	25%	487	9%	1,371	27%	633	12%	3,575	62%	3,020	59%	120	15%	675	16%	1	0.0%
Sana'a	783	4,324	16.1%	832	19%	251	6%	780	18%	217	5%	2,463	48%	1,904	44%	185	21%	668	16%	1	0.0%
Aden	502	656	22.9%	138	21%	59	9%	95	14%	29	4%	483	42%	239	36%	216	42%	-	-	0	0.0%
Taizz	1,506	4,951	14.9%	1,166	24%	344	7%	972	20%	242	5%	3,439	53%	2,513	51%	308	18%	713	16%	0	0.0%
Abyan	43	546	14.0%	168	31%	72	13%	80	15%	31	6%	363	62%	268	49%	8	16%	10	14%	0	0.0%
Shabwah	73	378	12.3%	60	16%	21	6%	50	13%	9	2%	142	31%	128	34%	-	-	204	57%	0	0.0%

