

Screened Children 2022

692,986

Key Figures Oct 2022



91,124

Screened Children (0 - 59 months) in Oct



20%

Screened Children (Under 6 months)



28%

GAM (WHZ) (6 - 59 months)



49%

Stunting (6 - 59 months)



22%

Anemia (6 - 59 months)



50%

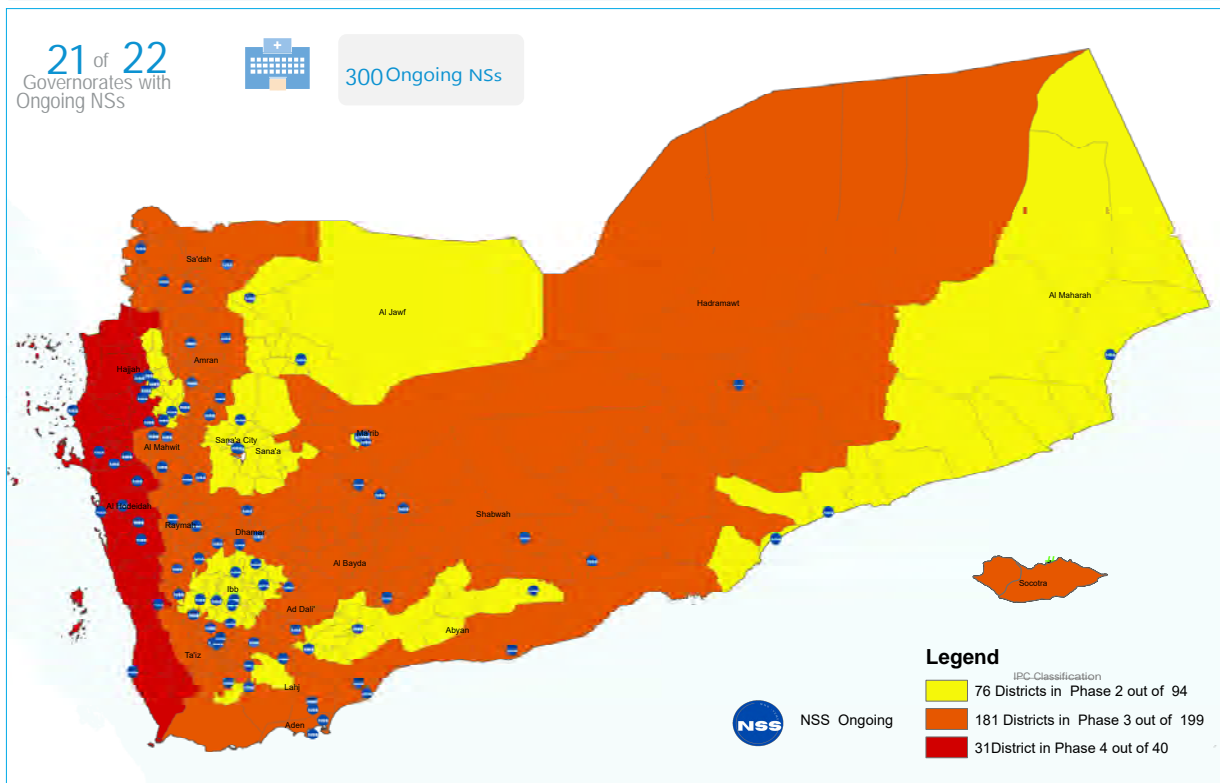
Underweight (0 - 59 months)



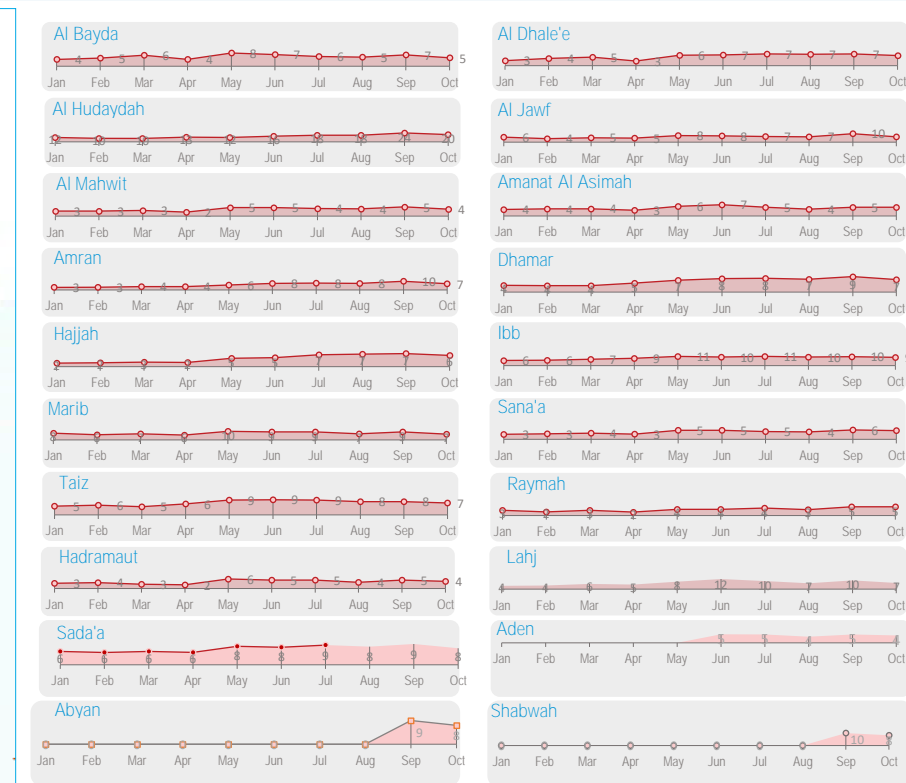
14%

Exclusive Breastfeeding (0 - 6 months)

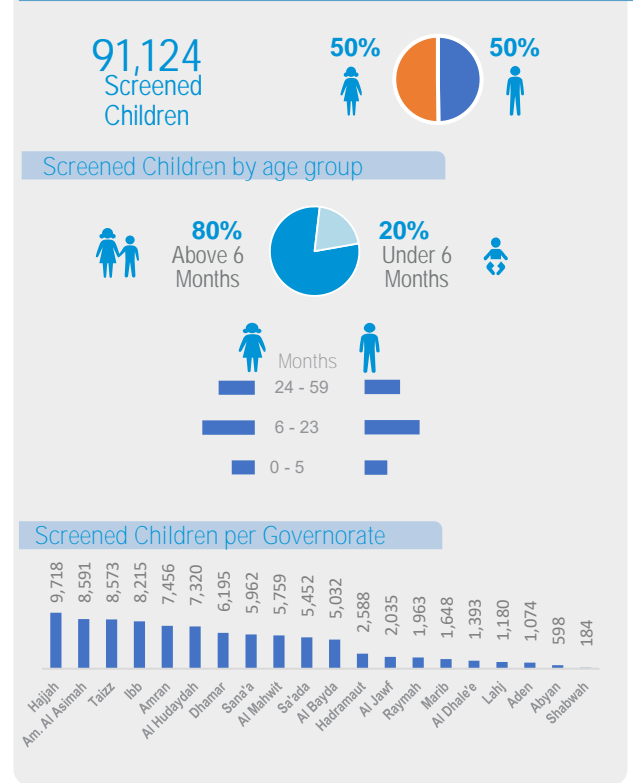
Geographical Presence of Nutrition Sentinel Sites



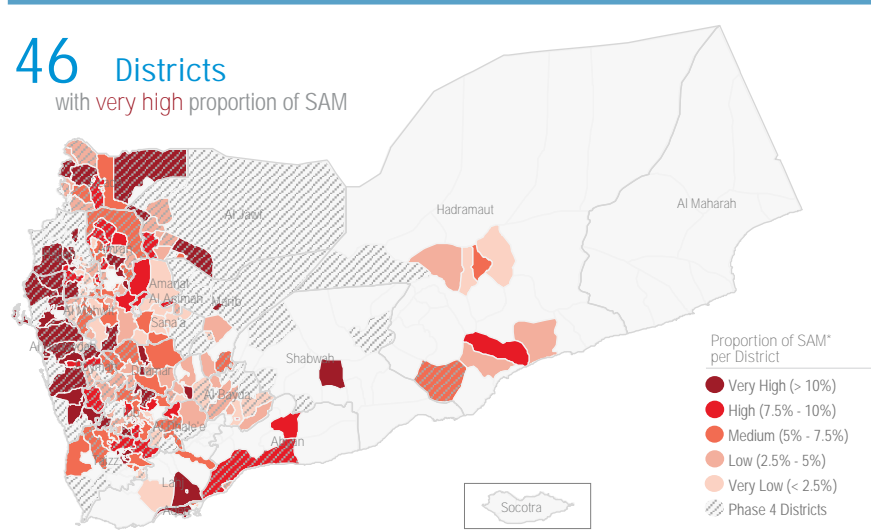
Proportion † of Severe Acute Malnutrition (SAM) Monthly Trend Reporting per Gov



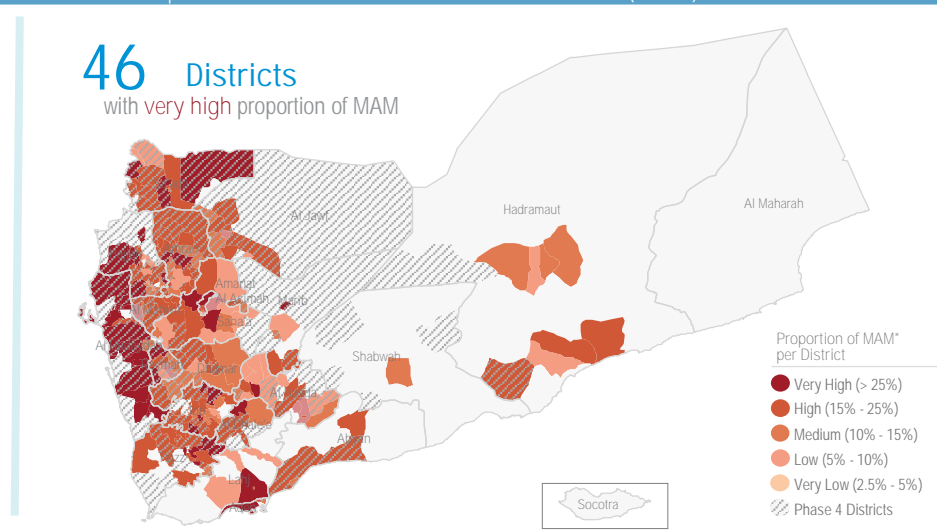
Screened Children Oct



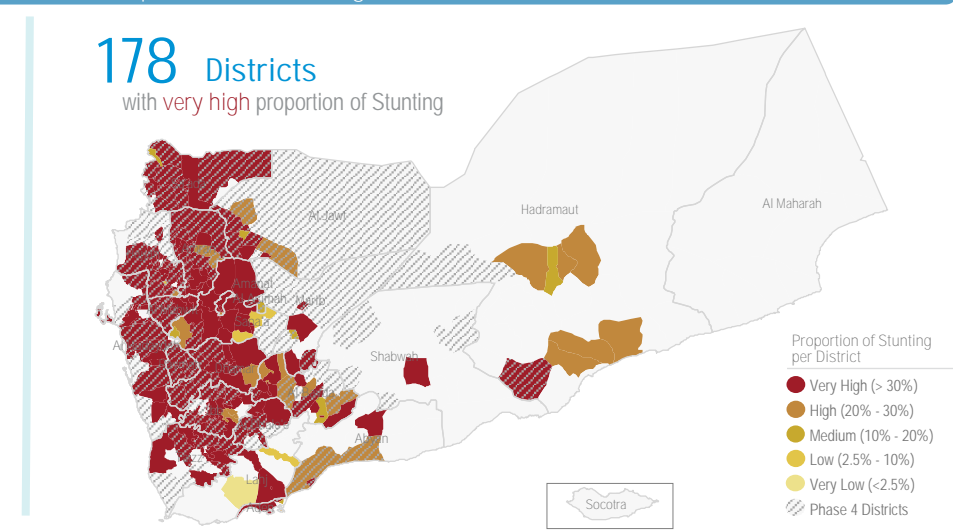
Proportion † of Severe Acute Malnutrition (SAM)\* Oct



Proportion † of Moderate Acute Malnutrition (MAM)\* Oct



Proportion † of Stunting Oct



Objectives of the Yemen Nutrition Surveillance System

Monitor children nutritional status, early detection of malnutrition and case referral. Share information and trigger alert verification..

Methodology

Nutritional assessment in NSS is normally performed through the measurement of child's weigh,height/length, MUAC, age, hemoglobin level, breastfeeding status and oedema. It is Facility-based surveillance system, established mainly in district hospitals across the country.

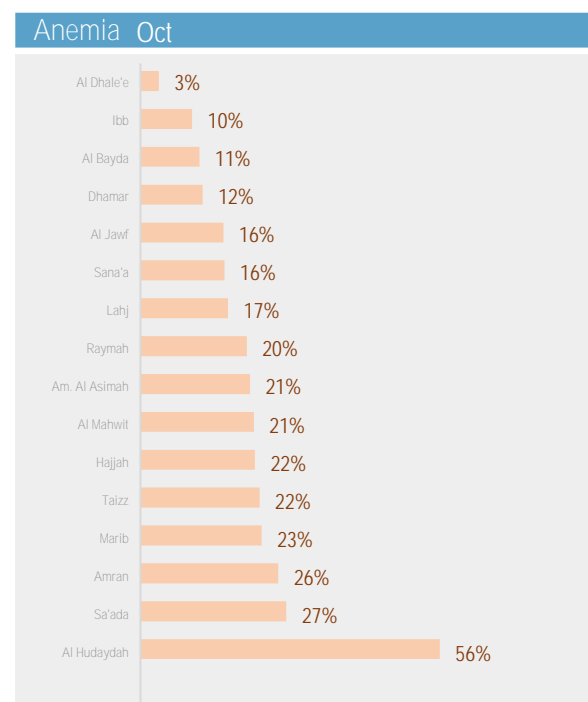
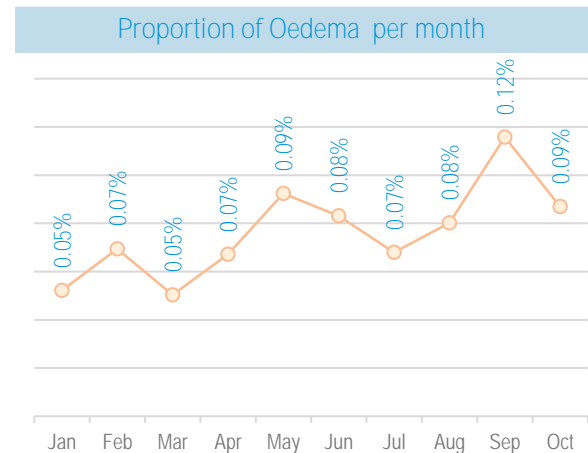
The system provides proportion of children under five years found suffering from any forms of malnutrition, out of the total children screened. It is not a formal survey using sampling methods to produce representative results.

The results only reflect the status of children who have attended the health facility in the month under review. The system tracks Global core nutrition indicators: Stunting, Wasting, Exclusive breastfeeding and Anemia. This bulletin is based on reports received by the health facility surveillance MoPHP teams\*.

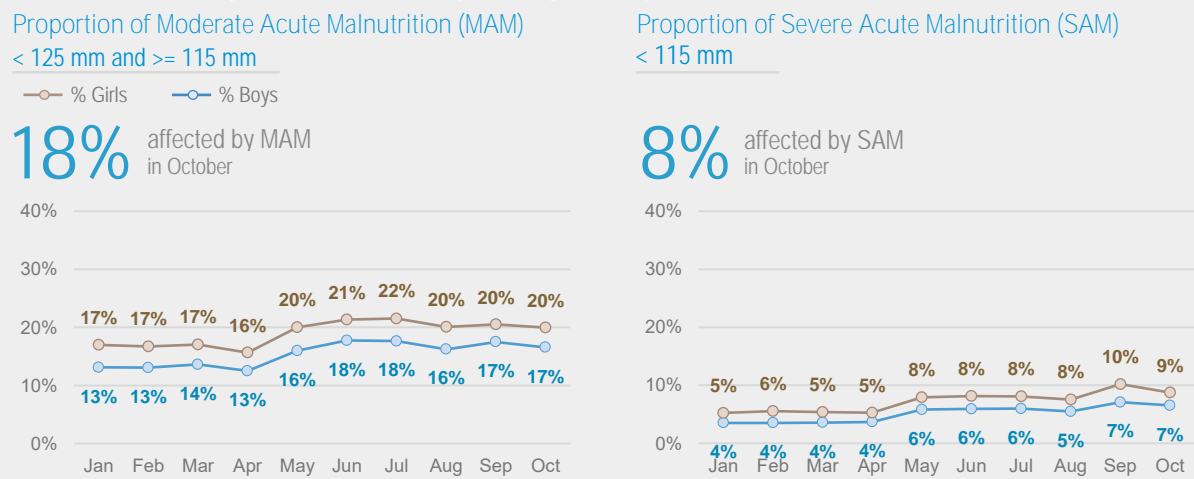
WHO supports the MoPHP and constantly works to expand coverage and improve data quality, funded by World Bank.

Summary for Nutrition Indicators Oct 2022 in Reporting Gov

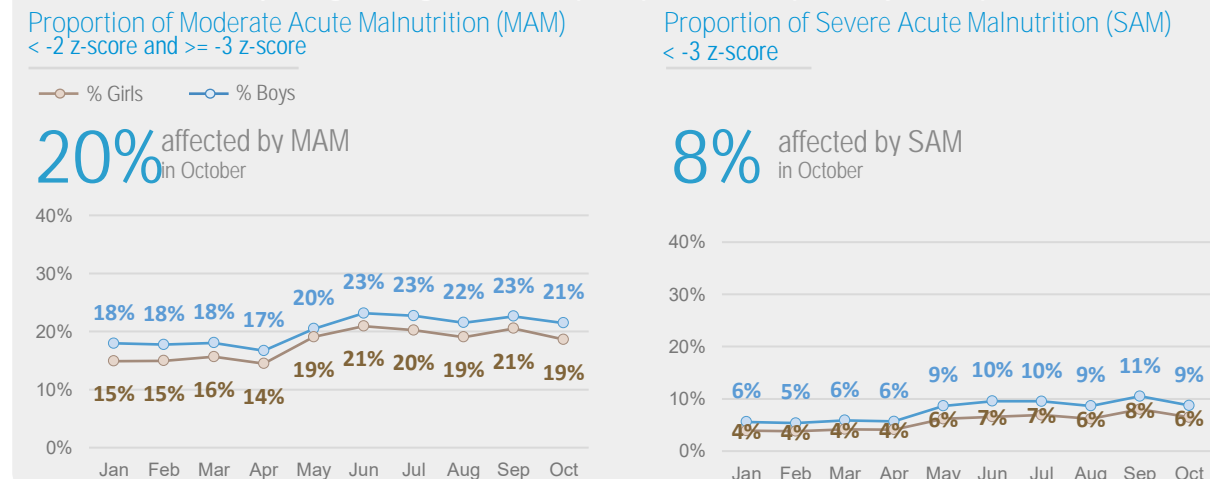
Governorate	# of Screened Children (0 - 5)	# of Screened Children (6 - 59)	Proportion of GAM (0 - 5)	Acute Malnutrition by Z- Score				Acute Malnutrition by MUAC				Underweight		Stunting		Exclusive Breastfeeding		Anemia		Oedema	
				# of MAM	Proportion of MAM	# of SAM	Proportion of SAM	# of MAM	Proportion of MAM	# of SAM	Proportion of SAM	# of Underweight	Proportion of Under weight	# of Stunting	Proportion of Stunting	# of EBF	Proportion of EBF (Yes)	# of Anemia	Proportion of Anemia	# of Oedema	Proportion of Oedema
Al Bayda	1,068	3,964	14.5%	511	13%	194	5%	442	11%	155	4%	1,844	37%	1,507	38%	205	18%	183	11%	4	0.1%
Al Dhale'e	196	1,197	13.8%	247	21%	72	6%	224	19%	86	7%	689	49%	571	48%	46	22%	21	3%	1	0.1%
Al Hudaydah	1,406	5,914	21.9%	2,113	36%	1,191	20%	2,056	35%	1,210	20%	5,092	70%	3,494	59%	59	4%	3,288	56%	2	0.0%
Al Jawf	277	1,758	18.1%	249	14%	114	6%	217	12%	90	5%	857	42%	651	37%	66	22%	270	16%	0	0.0%
Al Mahwit	1,195	4,564	13.7%	812	18%	189	4%	681	15%	218	5%	2,726	47%	2,310	51%	169	13%	963	21%	3	0.1%
Amanat Al Asimah	2,250	6,341	24.4%	1,214	19%	335	5%	732	12%	211	3%	3,877	45%	2,872	45%	405	17%	1,223	21%	0	0.0%
Amran	1,286	6,170	11.9%	1,220	20%	446	7%	1,334	22%	594	10%	3,894	52%	3,439	56%	164	12%	1,576	26%	3	0.0%
Dhahar	1,328	4,867	19.6%	810	17%	357	7%	1,067	22%	516	11%	3,308	53%	2,730	56%	158	11%	537	12%	22	0.4%
Hadramaut	1,216	1,372	-	200	15%	58	4%	103	8%	36	3%	592	23%	308	22%	327	26%	145	47%	0	0.0%
Hajjah	1,822	7,896	11.9%	1,330	17%	497	6%	1,345	17%	570	7%	5,095	52%	4,273	54%	210	11%	1,682	22%	1	0.0%
Ibb	2,144	6,071	21.1%	1,331	22%	574	9%	1,079	18%	449	7%	4,295	52%	2,965	49%	301	13%	579	10%	29	0.4%
Lahj	159	1,021	-	173	17%	75	7%	110	11%	33	3%	468	40%	278	27%	37	22%	160	17%	0	0.0%
Marib	185	1,463	10.8%	265	18%	97	7%	194	13%	100	7%	667	40%	565	39%	47	23%	240	23%	3	0.2%
Raymah	257	1,706	17.9%	341	20%	87	5%	311	18%	91	5%	1,282	65%	1,123	66%	7	2%	335	20%	2	0.1%
Sa'ada	555	4,897	13.5%	1,015	21%	368	8%	1,233	25%	521	11%	3,009	55%	2,703	55%	85	13%	1,230	27%	3	0.1%
Sana'a	874	5,088	15.4%	837	16%	266	5%	667	13%	228	4%	2,602	44%	2,155	42%	200	21%	389	8%	1	0.0%
Aden	393	681	-	145	21%	54	8%	125	18%	28	4%	392	36%	180	26%	-	-	-	-	0	0.0%
Taizz	1,803	6,770	16.3%	1,569	23%	472	7%	1,216	18%	380	6%	4,323	50%	3,223	48%	186	9%	1,453	22%	5	0.1%
Abyan	82	516	-	96	19%	42	8%	66	13%	9	2%	237	40%	169	33%	-	-	-	-	0	0.0%
Shabwah	28	156	-	22	14%	16	10%	16	10%	8	5%	75	41%	51	33%	-	-	-	-	0	0.0%



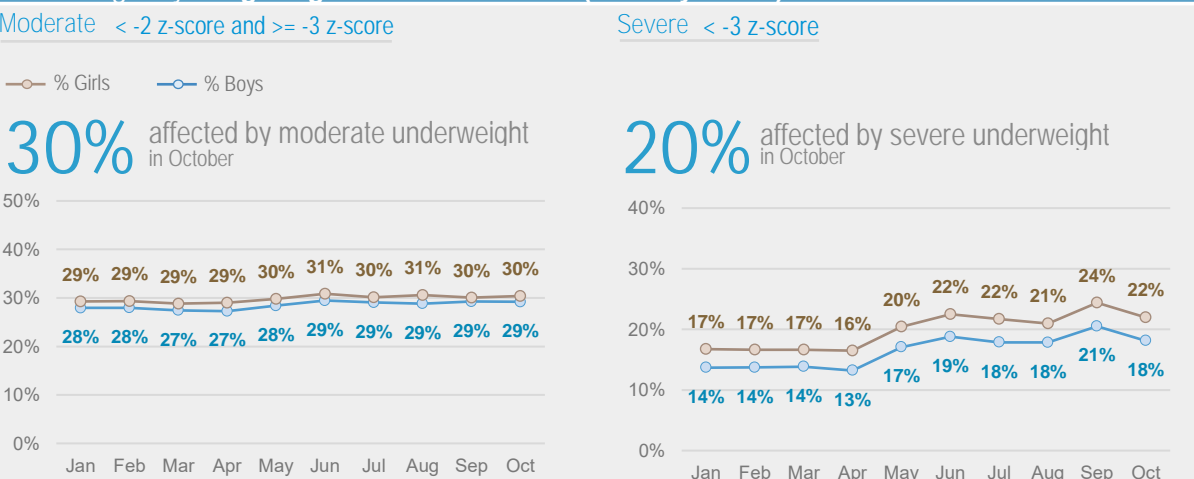
Acute Malnutrition by MUAC / Gender (Monthly Trend)



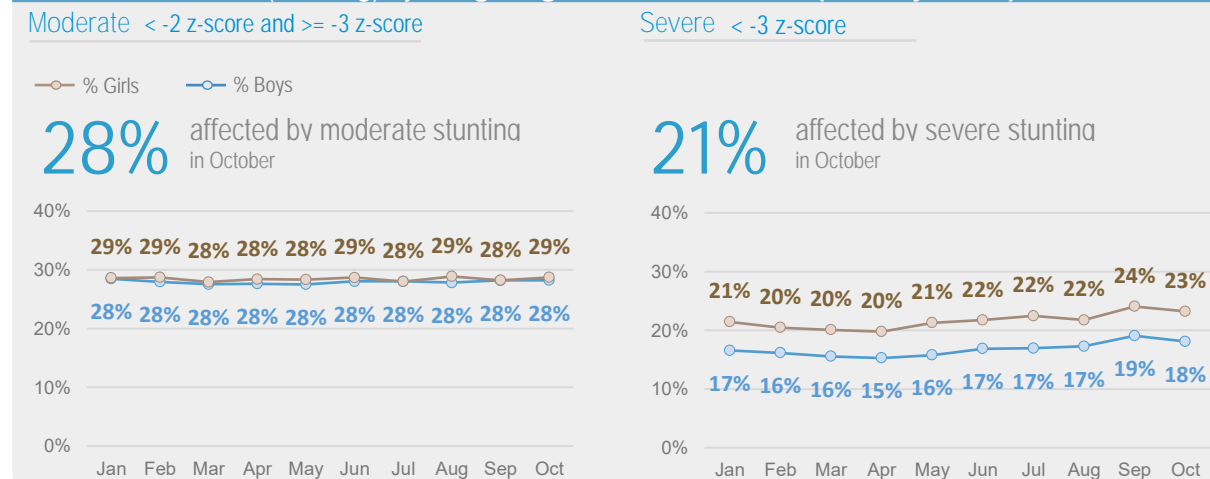
Acute Malnutrition by Weight/Height Z Score (WHZ) / Gender (Monthly Trend)



Underweight by Weight/Age Z Score / Gender (Monthly Trend)



Chronic Malnutrition (Stunting) by Height/Age Z Score / Gender (Monthly Trend)



Exclusive Breastfeeding Oct

