

Screened Children 2024

545,888

Key Figures July 2024



91,444

Screened Children (0 - 59 months) in July



20%

Screened Children (Under 6 months)



30%

GAM (WHZ) (6 - 59 months)



4.9%

Stunting (6 - 59 months)



21%

Anemia (6 - 59 months)



51%

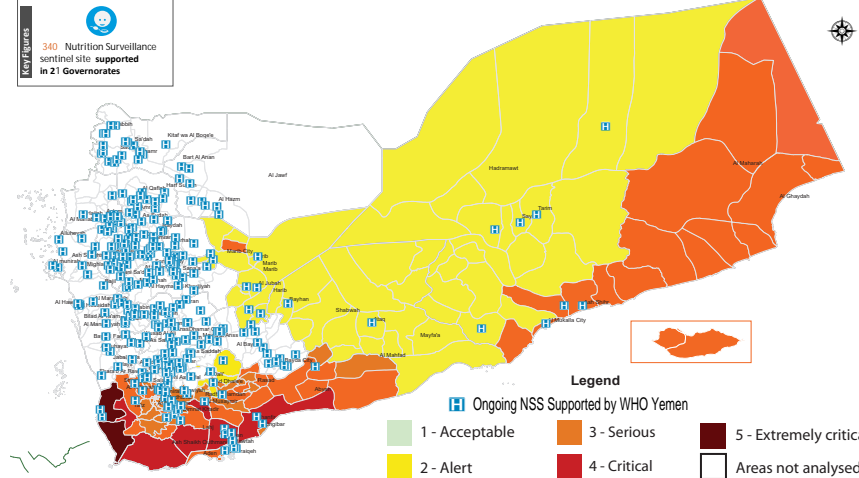
Underweight (0 - 59 months)



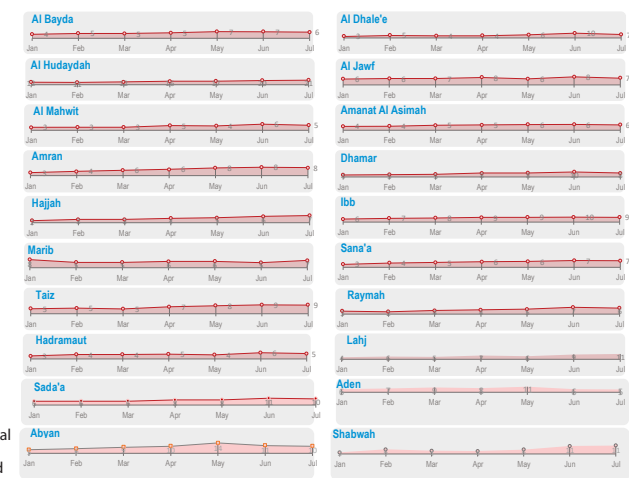
14%

Exclusive Breastfeeding (0 - 6 months)

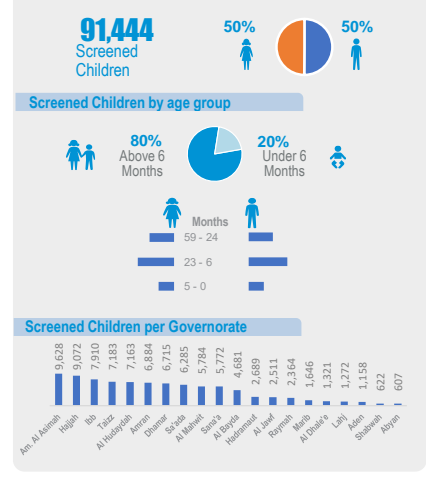
Geographical Presence of Nutrition Sentinel Sites - IPC AMN



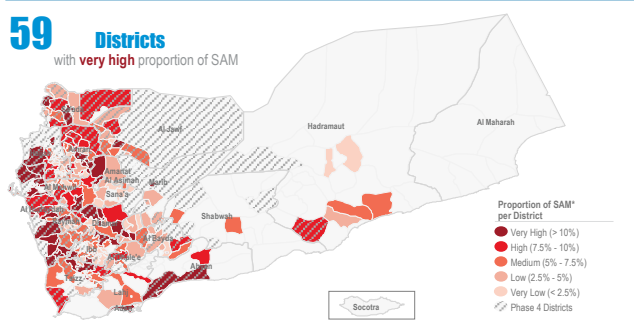
Proportion ↑ of Severe Acute Malnutrition (SAM) Monthly Trend Reporting per Gov



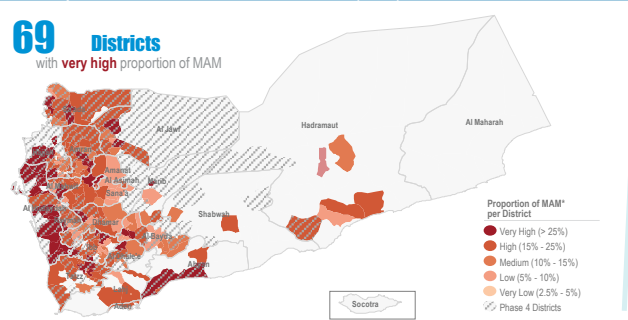
Screened Children July



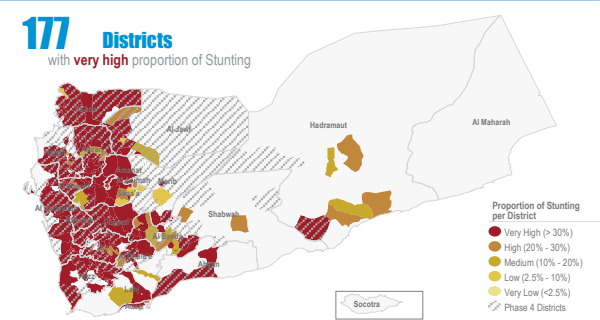
Proportion ↑ of Severe Acute Malnutrition (SAM)\* July



Proportion ↑ of Moderate Acute Malnutrition (MAM)\* July



Proportion ↑ of Stunting July



Objectives of the Yemen Nutrition Surveillance System

Monitor children nutritional status, early detection of malnutrition and case referral. Share information and trigger alert verification..

Methodology

Nutritional assessment in NSS is normally performed through the measurement of child's weigh,height/length, MUAC, age,hemoglobin level, breastfeeding status and oedema.It is Facility-based surveillance system, established mainly in district hospitals across the country.

The system provides proportion of children under five years found suffering from any forms of malnutrition, out of the total children screened. It is not a formal survey using sampling methods to produce representative results.

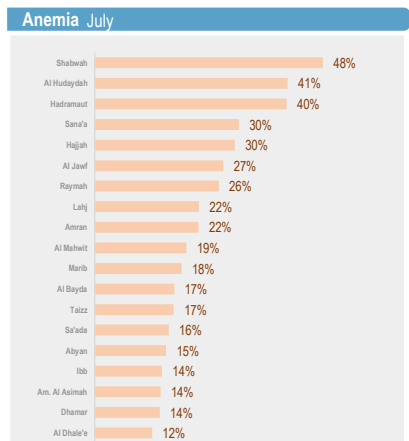
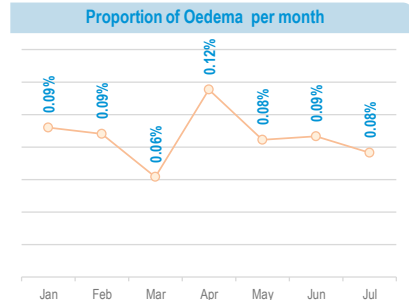
The results only reflect the status of children who have attended the health facility in the month under review.The system tracks Global core nutrition indicators: Stunting, Wasting, Exclusive breastfeeding and Anemia.This bulletin is based on reports received by the health facility surveillance MoPHP teams\*.

WHO supports the MoPHP and constantly works to expand coverage and improve data quality, funded by World Bank.

Additional screening of 21,581 children via mobile teams and pediatric wards integrated with TFC to ensure assessment of children in remote areas is conducted with ensuring to refer children with malnutrition forms to the nearest nutrition services to continue receiving treatment and follow up

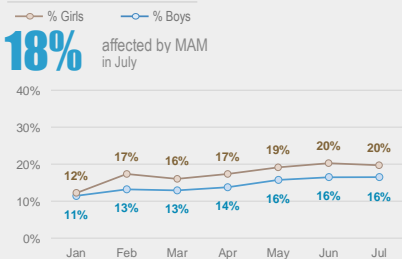
Summary for Nutrition Indicators July 2024 in Reporting Gov

Governorate	# of Screened Children (0-5)	# of Screened Children (6-59)	Proportion of GAM (0-5)	Acute Malnutrition by Z- Score				Acute Malnutrition by MUAC				Underweight		Stunting		Exclusive Breastfeeding		Anemia		Oedema	
				# of MAM	Proportion of MAM	# of SAM	Proportion of SAM	# of MAM	Proportion of MAM	# of SAM	Proportion of SAM	# of Underweight	Proportion of Under weight	# of Stunting	Proportion of Stunting	# of EBF	Proportion of EBF (Yes)	# of Anemia	Proportion of Anemia	# of Oedema	Proportion of Oedema
Al Bayda	899	3,782	12.3%	525	14%	228	6%	451	12%	157	4%	1,743	37%	1,333	35%	148	15%	477	17%	2	0.0%
Al Dhale'e	205	1,116	27.3%	270	24%	76	7%	222	20%	97	9%	721	54%	534	48%	54	25%	43	12%	0	0.0%
Al Hudaydah	880	6,283	24.0%	2,167	34%	1,322	21%	2,079	33%	1,204	19%	5,156	72%	3,526	56%	73	6%	2,473	41%	0	0.0%
Al Jawf	341	2,170	19.6%	422	19%	153	7%	279	13%	101	5%	1,150	46%	865	40%	64	17%	553	27%	1	0.0%
Al Mahwit	1,205	4,579	14.9%	763	17%	230	5%	542	12%	196	4%	2,433	42%	1,965	43%	247	18%	885	19%	2	0.0%
Amanat Al Asimah	2,386	7,242	0.0%	1,701	23%	411	6%	874	12%	250	3%	4,487	47%	3,290	45%	400	16%	718	14%	1	0.0%
Amran	1,298	5,586	15.3%	1,205	22%	446	8%	1,244	22%	481	9%	3,652	53%	2,971	53%	134	9%	1,222	22%	0	0.0%
Dhahar	1,425	5,290	20.7%	853	16%	412	8%	1,075	20%	472	9%	3,913	58%	3,223	61%	132	8%	721	14%	14	0.2%
Hadramaut	1,049	1,640	14.9%	274	17%	86	5%	139	8%	44	3%	684	25%	369	23%	202	19%	152	40%	0	0.0%
Hajjah	1,387	7,685	12.4%	1,318	17%	530	7%	1,268	16%	502	7%	4,629	51%	3,778	49%	151	9%	2,268	30%	2	0.0%
Ibb	2,162	5,748	20.7%	1,200	21%	541	9%	929	16%	400	7%	4,003	51%	2,762	48%	366	15%	815	14%	41	0.5%
Lahj	172	1,100	22.7%	224	20%	116	11%	166	15%	81	7%	596	47%	259	24%	49	28%	225	22%	1	0.1%
Marib	169	1,477	22.5%	257	17%	107	7%	179	12%	55	4%	652	40%	555	38%	49	26%	194	18%	2	0.1%
Raymah	359	2,005	23.7%	379	19%	121	6%	312	16%	104	5%	1,605	68%	1,431	71%	11	2%	524	26%	0	0.0%
Sa'ada	731	5,554	18.2%	1,320	24%	547	10%	1,341	24%	743	13%	3,869	61%	3,269	59%	131	13%	693	16%	0	0.0%
Sana'a	909	4,863	16.1%	981	20%	326	7%	906	19%	259	5%	2,884	50%	2,244	46%	193	18%	729	15%	3	0.1%
Aden	439	719	23.7%	157	22%	82	11%	120	17%	33	5%	481	42%	232	32%	177	40%	-	-	0	0.0%
Taizz	1,795	5,388	16.4%	1,276	24%	461	9%	1,013	19%	317	6%	3,668	51%	2,571	48%	380	18%	829	17%	0	0.0%
Abyan	46	561	17.4%	181	32%	75	13%	97	17%	21	4%	360	59%	243	43%	12	26%	14	15%	1	0.2%
Shabwah	112	510	19.6%	94	18%	35	7%	53	10%	16	3%	215	35%	161	32%	2	2%	240	48%	0	0.0%

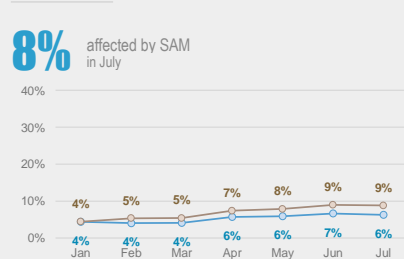


Acute Malnutrition by MUAC / Gender (Monthly Trend)

Proportion of Moderate Acute Malnutrition (MAM) < 125 mm and >= 115 mm

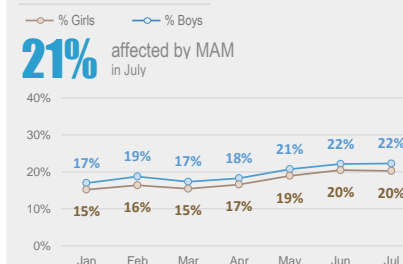


Proportion of Severe Acute Malnutrition (SAM) < 115 mm

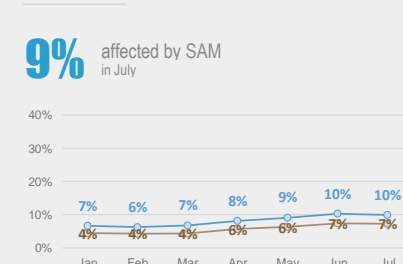


Acute Malnutrition by Weight/Height Z Score (WHZ) / Gender (Monthly Trend)

Proportion of Moderate Acute Malnutrition (MAM) < -2 z-score and >= -3 z-score

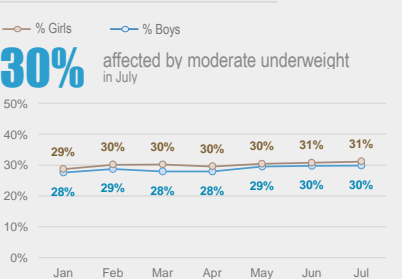


Proportion of Severe Acute Malnutrition (SAM) < -3 z-score

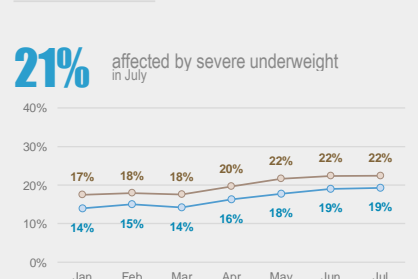


Underweight by Weight/Age Z Score / Gender (Monthly Trend)

Moderate < -2 z-score and >= -3 z-score

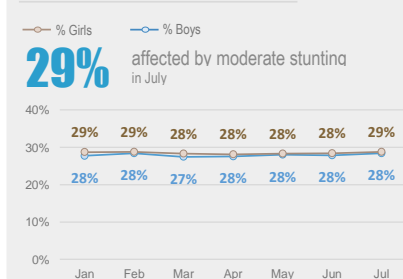


Severe < -3 z-score



Chronic Malnutrition (Stunting) by Height/Age Z Score / Gender (Monthly Trend)

Moderate < -2 z-score and >= -3 z-score



Severe < -3 z-score

