

Screened Children 2023

171,892

Key Figures
Feb 2024



83,891

Screened Children (0 - 59 months) in Feb



21%

Screened Children (Under 6 months)



23%

GAM (WHZ) (6 - 59 months)



44%

Stunting (6 - 59 months)



19%

Anemia (6 - 59 months)



46%

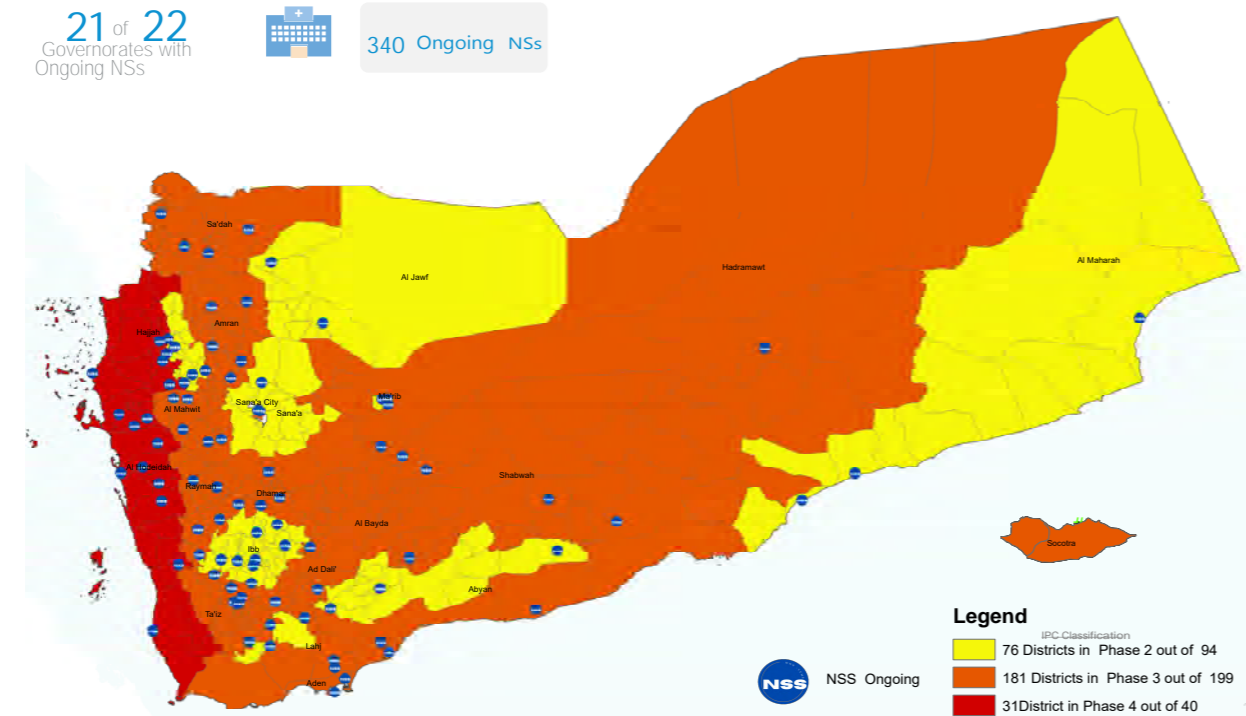
Underweight (0 - 59 months)



16%

Exclusive Breastfeeding (0 - 6 months)

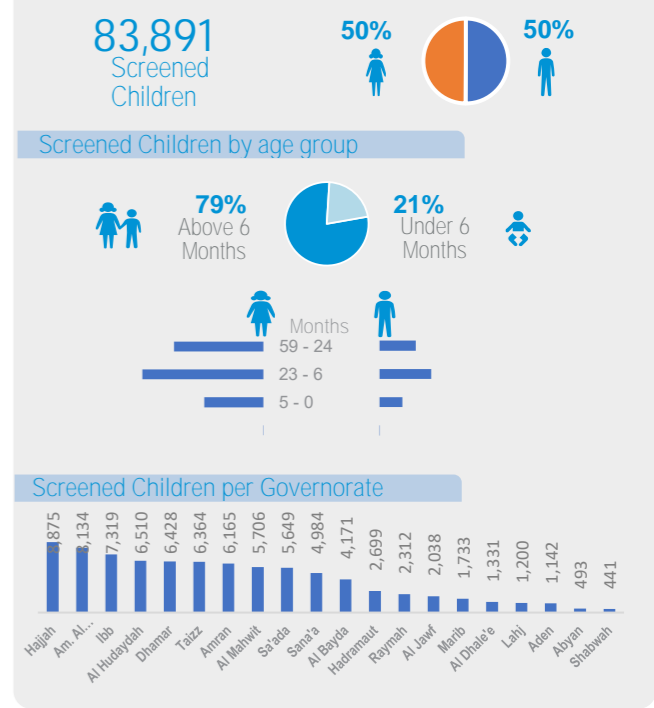
Geographical Presence of Nutrition Sentinel Sites



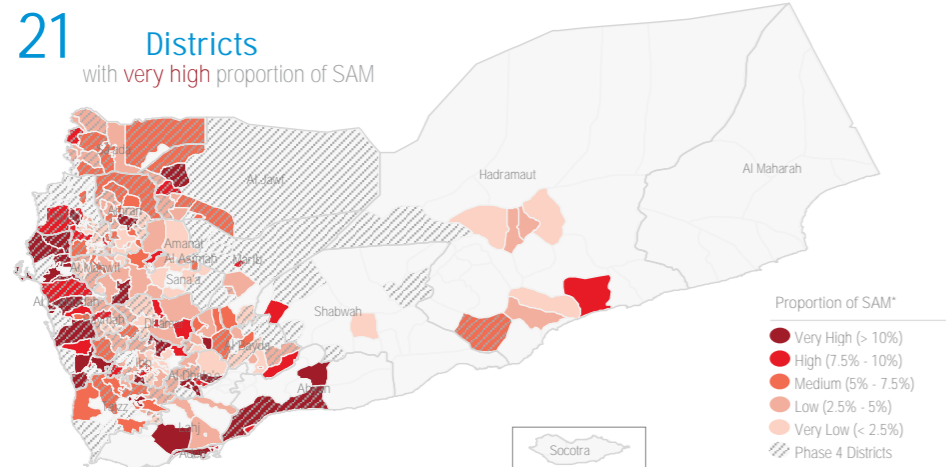
Proportion † of Severe Acute Malnutrition (SAM) Monthly Trend Reporting per Gov



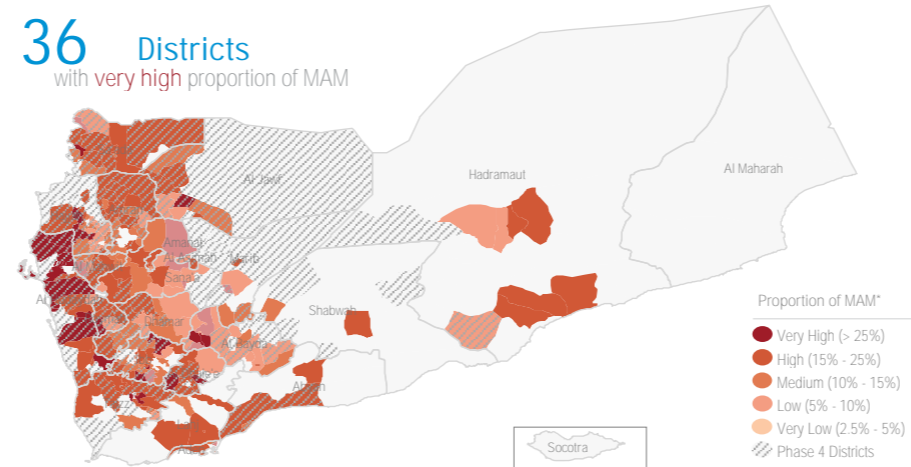
Screened Children Feb



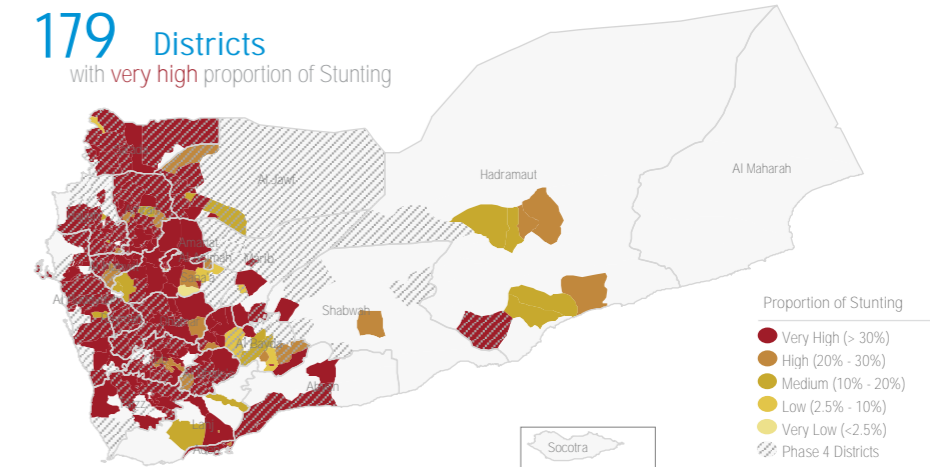
Proportion † of Severe Acute Malnutrition (SAM)* Feb



Proportion † of Moderate Acute Malnutrition (MAM)* Feb



Proportion † of Stunting Feb



Objectives of the Yemen Nutrition Surveillance System

Monitor children nutritional status, early detection of malnutrition and case referral. Share information and trigger alert verification..

Methodology

Nutritional assessment in NSS is normally performed through the measurement of child's weigh,height/length, MUAC, age,hemoglobin level, breastfeeding status and oedema.It is Facility-based surveillance system, established mainly in district hospitals across the country.

The system provides proportion of children under five years found suffering from any forms of malnutrition, out of the total children screened. It is not a formal survey using sampling methods to produce representative results.

The results only reflect the status of children who have attended the health facility in the month under review.The system tracks Global core nutrition indicators: Stunting, Wasting, Exclusive breastfeeding and Anemia.This bulletin is based on reports received by the health facility surveillance MoPHP teams*.

WHO supports the MoPHP and constantly works to expand coverage and improve data quality, funded by World Bank.

Summary for Nutrition Indicators Feb 2024 in Reporting Gov

Governorate	# of Screened Children (0 - 5)	# of Screened Children (6 - 59)	Proportion of GAM (0 - 5)	Acute Malnutrition by Z- Score				Acute Malnutrition by MUAC				Underweight		Stunting		Exclusive Breastfeeding		Anemia		Oedema	
				# of MAM	Proportion of MAM	# of SAM	Proportion of SAM	# of MAM	Proportion of MAM	# of SAM	Proportion of SAM	# of Underweight	Proportion of Under weight	# of Stunting	Proportion of Stunting	# of EBF	Proportion of EBF (Yes)	# of Anemia	Proportion of Anemia	# of Oedema	Proportion of Oedema
Al Bayda	817	3,354	11.4%	434	13%	165	5%	343	10%	99	3%	1,426	34%	1,213	36%	143	16%	430	17%	4	0.1%
Al Dhale'e	154	1,177	17.5%	237	20%	60	5%	214	18%	57	5%	691	51%	564	48%	23	14%	56	8%	0	0.0%
Al Hudaydah	1,340	5,170	14.9%	1,561	30%	558	11%	1,553	30%	655	13%	3,998	61%	2,976	58%	111	7%	2,008	40%	2	0.0%
Al Jawf	319	1,719	17.2%	268	16%	111	6%	197	11%	56	3%	894	43%	651	38%	49	14%	422	25%	0	0.0%
Al Mahwit	1,191	4,515	8.9%	584	13%	143	3%	450	10%	119	3%	2,283	40%	1,924	43%	180	14%	733	16%	2	0.0%
Amanat Al Asimah	2,080	6,054	18.7%	1,250	21%	259	4%	692	11%	149	2%	3,623	45%	2,795	46%	415	18%	578	13%	2	0.0%
Amran	1,360	4,805	11.6%	866	18%	204	4%	810	17%	266	6%	2,861	46%	2,494	52%	183	12%	1,093	23%	1	0.0%
Dhamar	1,393	5,035	19.0%	768	15%	244	5%	954	19%	317	6%	3,405	53%	2,817	56%	160	10%	526	10%	7	0.1%
Hadramaut	1,148	1,551	14.6%	228	15%	69	4%	115	7%	24	2%	635	23%	318	21%	189	16%	107	39%	0	0.0%
Hajjah	1,717	7,158	7.9%	883	12%	225	3%	926	13%	260	4%	3,859	43%	3,453	48%	198	10%	1,633	23%	1	0.0%
Ibb	1,775	5,544	19.1%	1,100	20%	414	7%	855	15%	282	5%	3,650	50%	2,666	48%	271	14%	723	13%	41	0.6%
Lahj	241	959	17.8%	122	13%	53	6%	102	11%	36	4%	436	36%	275	29%	58	21%	150	17%	0	0.0%
Marib	148	1,585	13.5%	226	14%	86	5%	179	11%	39	2%	630	36%	574	36%	63	37%	128	11%	10	0.6%
Raymah	327	1,985	27.5%	339	17%	46	2%	265	13%	60	3%	1,509	65%	1,375	69%	14	4%	551	28%	0	0.0%
Sa'ada	724	4,925	15.7%	878	18%	309	6%	1,007	20%	358	7%	2,830	50%	2,626	53%	182	20%	575	14%	3	0.1%
Sana'a	726	4,258	14.2%	662	16%	187	4%	583	14%	126	3%	2,097	42%	1,764	41%	221	26%	434	11%	0	0.0%
Aden	515	627	26.8%	129	21%	47	7%	91	15%	20	3%	405	35%	225	36%	225	42%	-	-	0	0.0%
Taizz	1,616	4,748	12.9%	919	19%	260	5%	687	14%	154	3%	2,905	46%	2,230	47%	403	22%	734	16%	1	0.0%
Abyan	78	415	11.5%	54	13%	26	6%	40	10%	14	3%	181	37%	167	40%	14	16%	15	17%	0	0.0%
Shabwah	91	350	38.5%	45	13%	22	6%	49	14%	8	2%	144	33%	118	34%	6	6%	116	35%	0	0.0%

