

Screened Children 2024

988,020

Key Figures Dec 2024

90,690

Screened Children (0 - 59 months) in Dec

21%

Screened Children (Under 6 months)

24%

GAM (WHZ) (6 - 59 months)

44%

Stunting (6 - 59 months)

19%

Anemia (6 - 59 months)

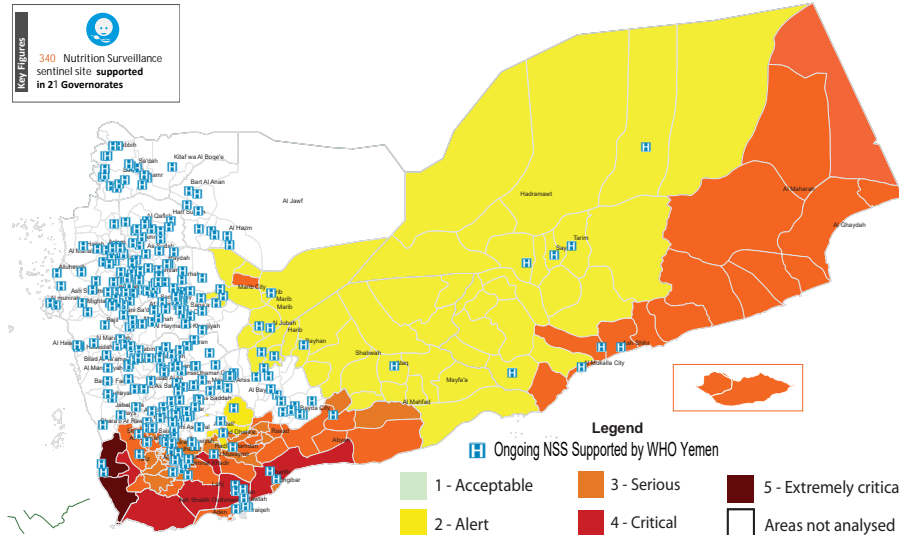
47%

Underweight (0 - 59 months)

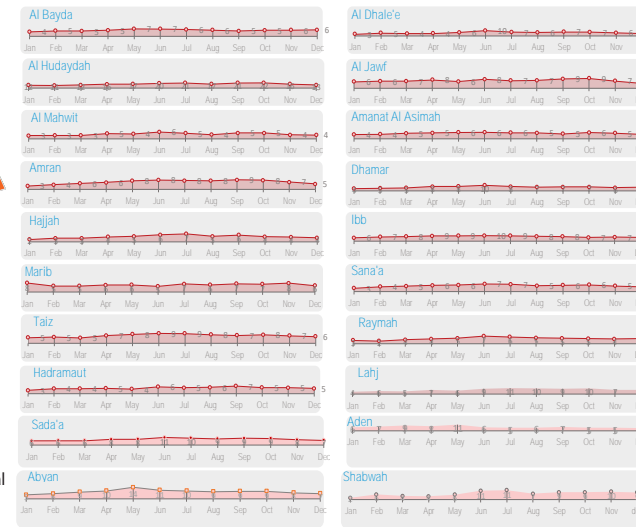
13%

Exclusive Breastfeeding (0 - 6 months)

Geographical Presence of Nutrition Sentinel Sites



Proportion † of Severe Acute Malnutrition (SAM) Monthly Trend Reporting per Gov



Screened Children Dec

90,690 Screened Children

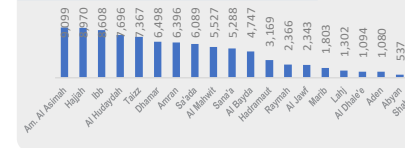
50% Male, 50% Female

Screened Children by age group

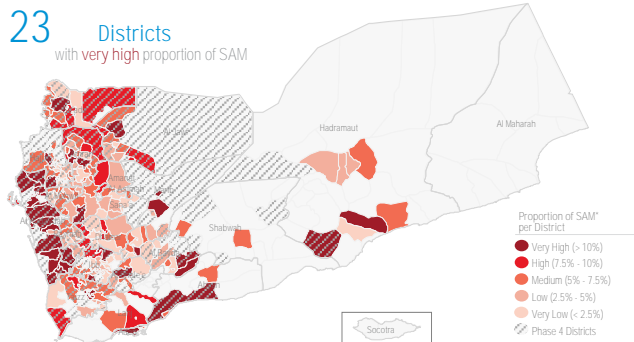
79% Above 6 Months, 21% Under 6 Months

Months: 59 - 24, 23 - 6, 5 - 0

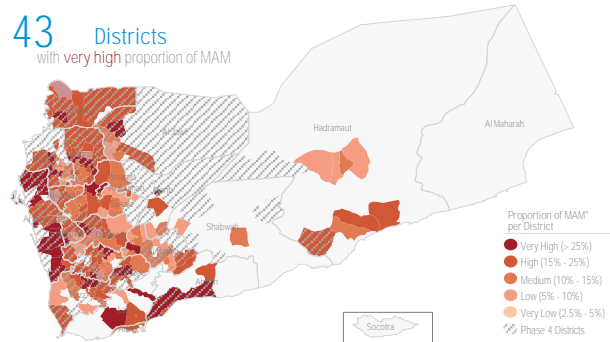
Screened Children per Governorate



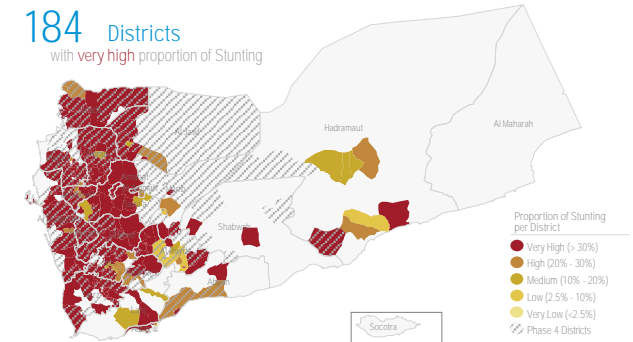
Proportion † of Severe Acute Malnutrition (SAM)* Dec



Proportion † of Moderate Acute Malnutrition (MAM)* Dec



Proportion † of Stunting Dec



Objectives of the Yemen Nutrition Surveillance System

Monitor children nutritional status, early detection of malnutrition and case referral. Share information and trigger alert verification..

Methodology

Nutritional assessment in NSS is normally performed through the measurement of child's weigh, height/length, MUAC, age, hemoglobin level, breastfeeding status and oedema. It is Facility-based surveillance system, established mainly in district hospitals across the country.

The system provides proportion of children under five years found suffering from any forms of malnutrition, out of the total children screened. It is not a formal survey using sampling methods to produce representative results.

The results only reflect the status of children who have attended the health facility in the month under review. The system tracks Global core nutrition indicators: Stunting, Wasting, Exclusive breastfeeding and Anemia. This bulletin is based on reports received by the health facility surveillance MoPHP teams*.

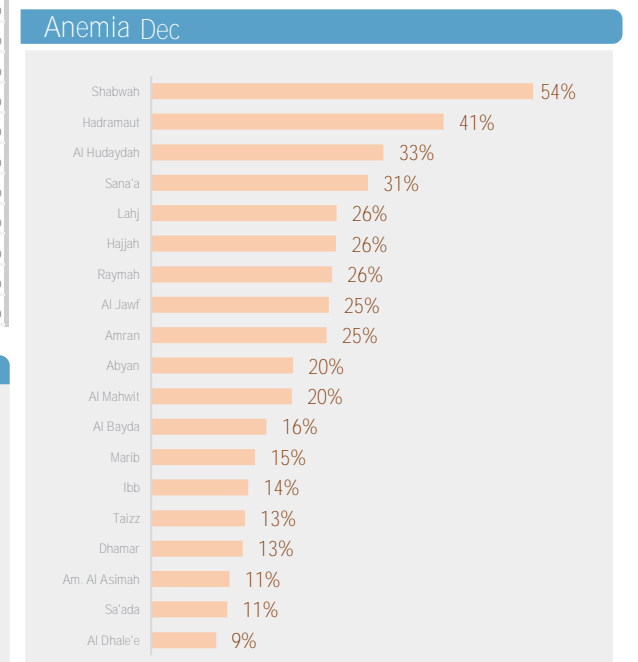
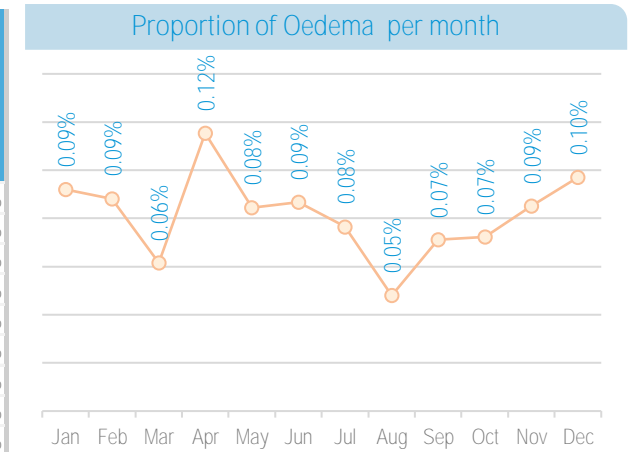
WHO supports the MoPHP and constantly works to expand coverage and improve data quality, funded by World Bank.

Additional screening of 55,447 children via mobile teams and pediatric wards integrated with TFC to ensure assessment of children in remote areas is conducted with ensuring to refer children with malnutrition forms to the nearest nutrition services to continue receiving treatment and follow up

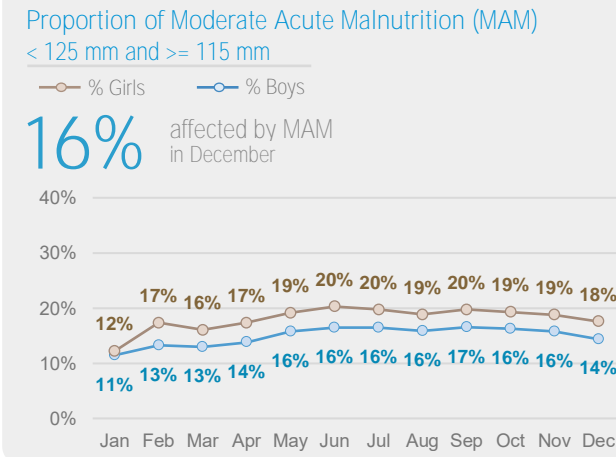
* Z-Score measure, † In percent, ** During last reported month

Summary for Nutrition Indicators Dec 2024 in Reporting Gov

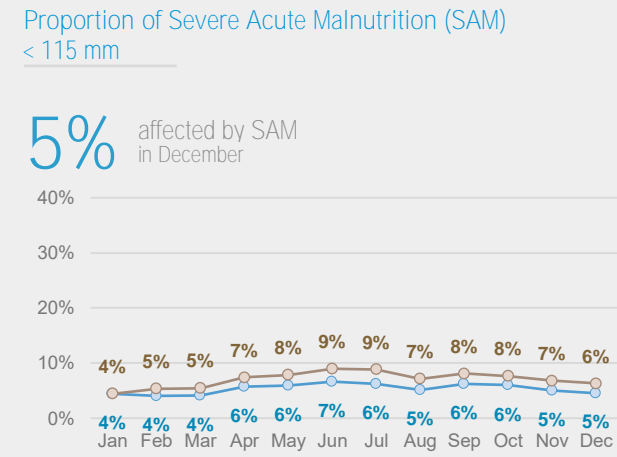
Governorate	# of Screened Children (0 - 5)	# of Screened Children (6 - 59)	Proportion of GAM (0 - 5)	Acute Malnutrition by Z- Score				Acute Malnutrition by MUAC				Underweight		Stunting		Exclusive Breastfeeding		Anemia		Oedema	
				# of MAM	Proportion of MAM	# of SAM	Proportion of SAM	# of MAM	Proportion of MAM	# of SAM	Proportion of SAM	# of Underweight	Proportion of Under weight	# of Stunting	Proportion of Stunting	# of EBF	Proportion of EBF (Yes)	# of Anemia	Proportion of Anemia	# of Oedema	Proportion of Oedema
Al Bayda	782	3,965	9.5%	524	13%	229	6%	477	12%	108	3%	1,791	37%	1,411	36%	118	13%	494	16%	1	0.0%
Al Dhale'e	129	965	27.9%	166	17%	42	4%	161	17%	69	7%	534	48%	448	46%	24	21%	40	9%	1	0.1%
Al Hudaydah	1,758	5,938	12.5%	1,937	33%	747	13%	1,813	31%	791	13%	4,914	64%	3,566	60%	135	7%	1,895	33%	0	0.0%
Al Jawf	301	2,042	15.0%	291	14%	92	5%	169	8%	77	4%	961	40%	830	41%	78	24%	484	25%	0	0.0%
Al Mahwit	1,114	4,413	10.2%	540	12%	155	4%	436	10%	131	3%	2,146	39%	1,846	42%	225	18%	875	20%	1	0.0%
Amanat Al Asimah	2,428	6,671	17.2%	1,142	17%	268	4%	615	9%	186	3%	3,783	42%	3,052	46%	467	17%	607	11%	2	0.0%
Amran	1,281	5,115	9.8%	983	19%	255	5%	954	19%	339	7%	3,030	47%	2,653	52%	98	7%	1,266	25%	0	0.0%
Dhamar	1,259	5,239	19.2%	878	17%	349	7%	1,087	21%	373	7%	3,698	57%	3,026	58%	137	9%	668	13%	9	0.1%
Hadramaut	1,506	1,663	10.6%	243	15%	77	5%	127	8%	37	2%	760	24%	361	22%	220	23%	123	41%	0	0.0%
Hajjah	1,359	7,611	7.6%	899	12%	268	4%	949	12%	324	4%	3,813	42%	3,584	47%	156	10%	1,989	26%	1	0.0%
Ibb	2,328	6,280	16.3%	1,154	18%	433	7%	918	15%	321	5%	3,971	46%	2,896	46%	411	16%	859	14%	54	0.6%
Lahj	318	984	16.4%	171	17%	72	7%	120	12%	44	4%	544	42%	258	26%	39	27%	240	26%	0	0.0%
Marib	201	1,602	12.4%	208	13%	92	6%	138	9%	37	2%	631	35%	560	35%	34	20%	182	15%	13	0.7%
Raymah	336	2,030	21.4%	379	19%	96	5%	348	17%	91	4%	1,579	67%	1,415	70%	11	6%	518	26%	1	0.0%
Sa'ada	626	5,463	14.7%	1,158	21%	359	7%	1,320	24%	502	9%	3,478	57%	3,169	58%	139	17%	516	11%	2	0.0%
Sana'a	834	4,454	14.1%	722	16%	189	4%	687	15%	173	4%	2,394	45%	2,017	45%	192	20%	665	31%	0	0.0%
Aden	519	561	16.4%	121	22%	49	9%	76	14%	23	4%	420	39%	201	36%	179	49%	-	0%	0	0.0%
Taizz	1,952	5,415	14.9%	1,124	21%	321	6%	921	17%	216	4%	3,582	49%	2,631	49%	372	17%	666	13%	3	0.0%
Abyan	66	471	13.6%	123	26%	42	9%	57	12%	23	5%	254	47%	198	42%	2	13%	15	20%	0	0.0%
Shabwah	66	414	24.2%	65	16%	23	6%	42	10%	12	3%	174	36%	170	41%	-	-	216	54%	0	0.0%



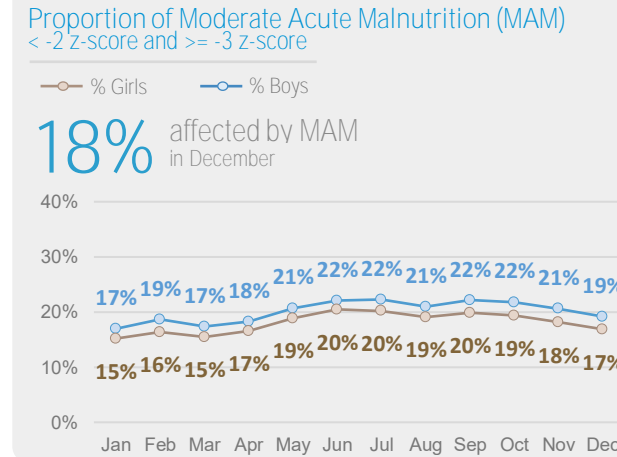
Acute Malnutrition by MUAC / Gender (Monthly Trend)



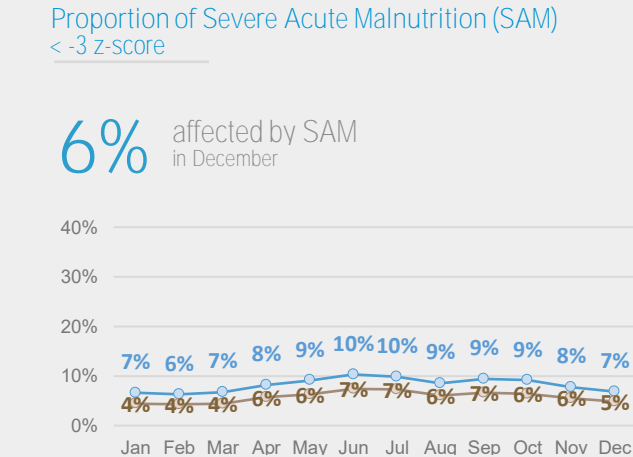
Acute Malnutrition by Weight/Height Z Score (WHZ) / Gender (Monthly Trend)



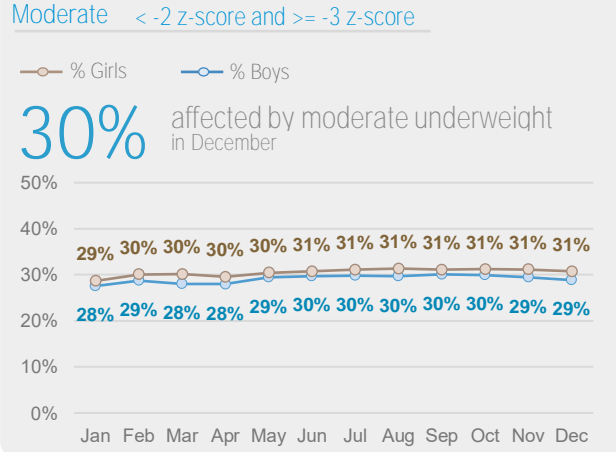
Acute Malnutrition by Weight/Height Z Score (WHZ) / Gender (Monthly Trend)



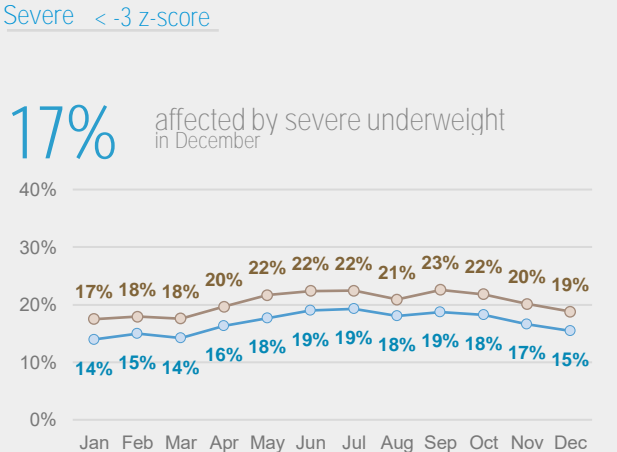
Acute Malnutrition by Weight/Height Z Score (WHZ) / Gender (Monthly Trend)



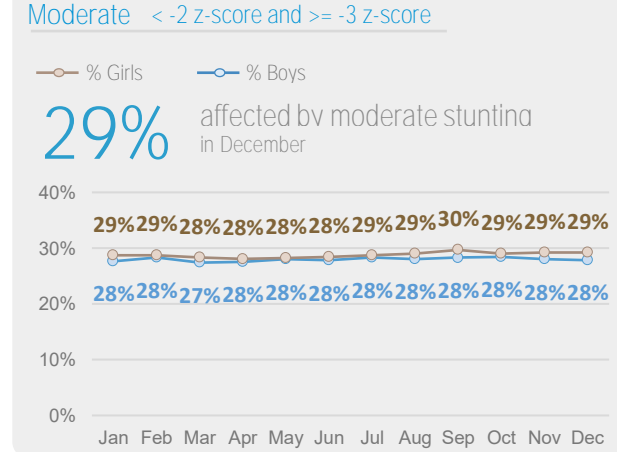
Underweight by Weight/Age Z Score / Gender (Monthly Trend)



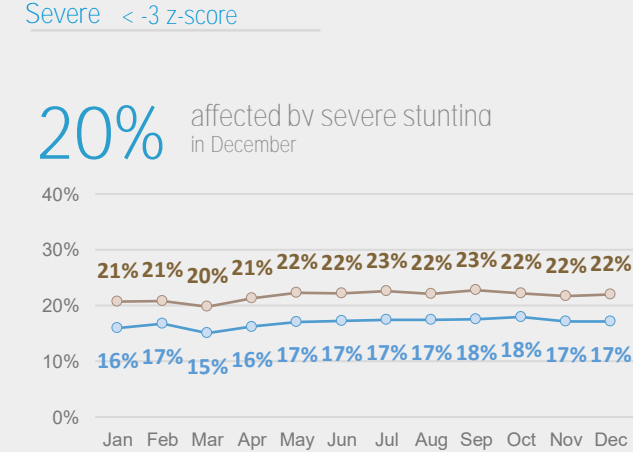
Underweight by Weight/Age Z Score / Gender (Monthly Trend)



Chronic Malnutrition (Stunting) by Height/Age Z Score / Gender (Monthly Trend)



Chronic Malnutrition (Stunting) by Height/Age Z Score / Gender (Monthly Trend)



Exclusive Breastfeeding Dec

