

Screened Children 2024

633,439

Key Figures Aug 2024



87,551

Screened Children (0 - 59 months) in Aug



19%

Screened Children (Under 6 months)



27%

GAM (WHZ) (6 - 59 months)



4.9%

Stunting (6 - 59 months)



21%

Anemia (6 - 59 months)



50%

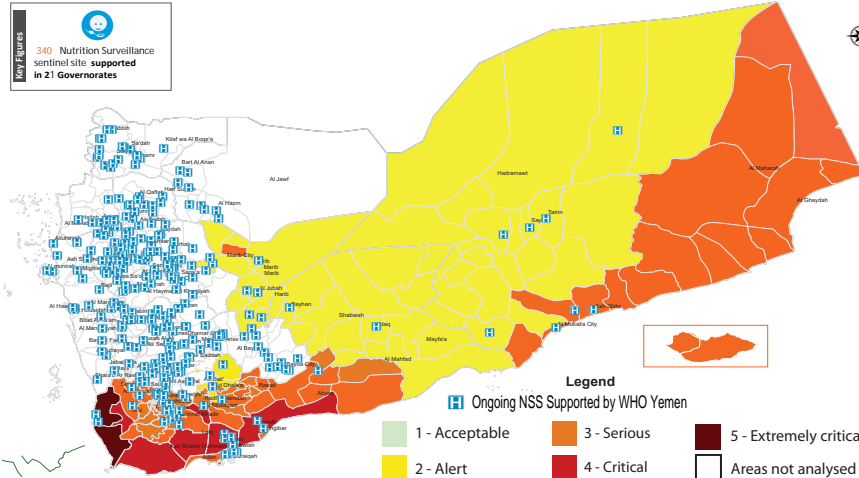
Underweight (0 - 59 months)



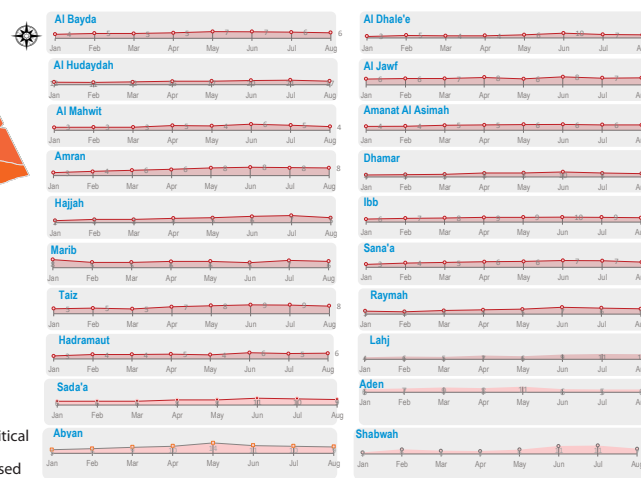
15%

Exclusive Breastfeeding (0 - 6 months)

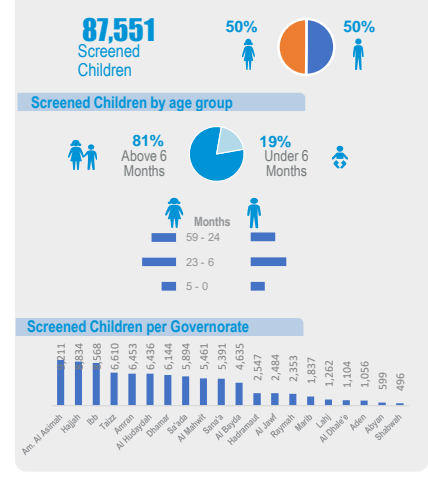
Geographical Presence of Nutrition Sentinel Sites - IPC AMN



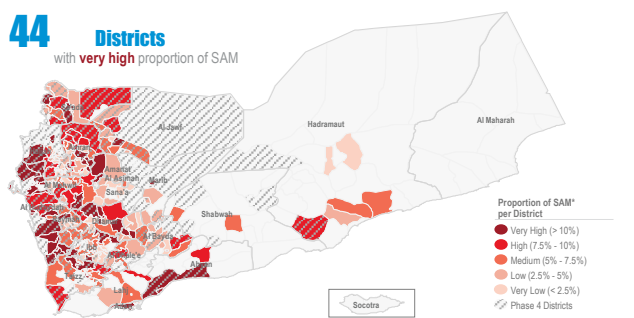
Proportion of Severe Acute Malnutrition (SAM) Monthly Trend Reporting per Gov



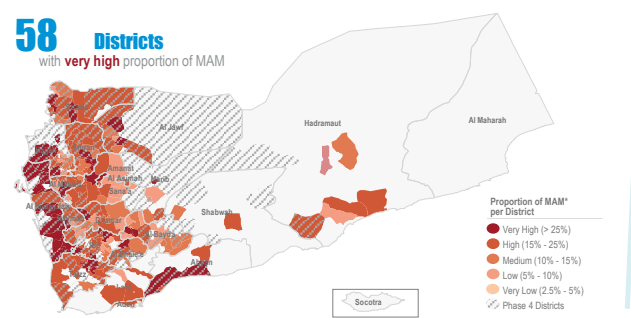
Screened Children Aug



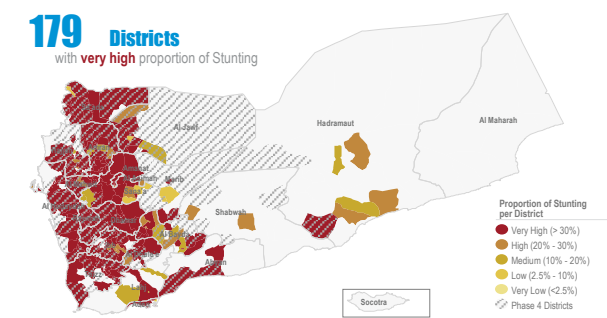
Proportion of Severe Acute Malnutrition (SAM)* Aug



Proportion of Moderate Acute Malnutrition (MAM)* Aug



Proportion of Stunting Aug



Objectives of the Yemen Nutrition Surveillance System

Monitor children nutritional status, early detection of malnutrition and case referral. Share information and trigger alert verification..

Methodology

Nutritional assessment in NSS is normally performed through the measurement of child's weigh,height/length, MUAC, age,hemoglobin level, breastfeeding status and oedema.It is Facility-based surveillance system, established mainly in district hospitals across the country.

The system provides proportion of children under five years found suffering from any forms of malnutrition, out of the total children screened. It is not a formal survey using sampling methods to produce representative results.

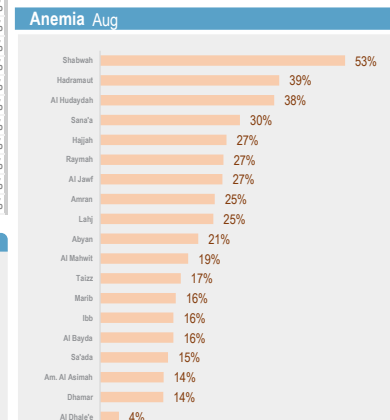
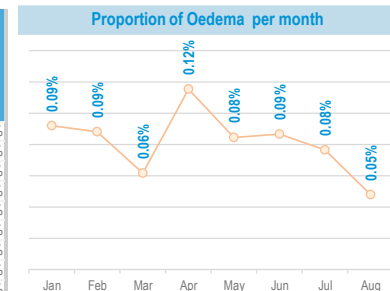
The results only reflect the status of children who have attended the health facility in the month under review.The system tracks Global core nutrition indicators: Stunting, Wasting, Exclusive breastfeeding and Anemia.This bulletin is based on reports received by the health facility surveillance MoPHP teams*.

WHO supports the MoPHP and constantly works to expand coverage and improve data quality, funded by World Bank.

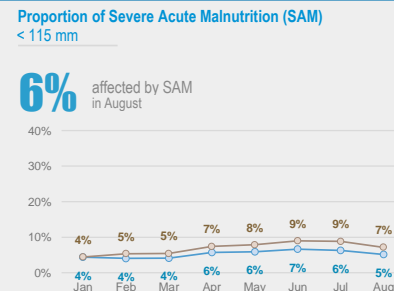
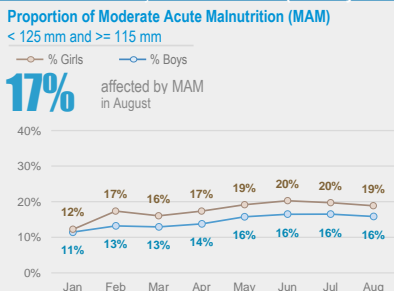
Additional screening of 27,940 children via mobile teams and pediatric wards integrated with TFC to ensure assessment of children in remote areas is conducted with ensuring to refer children with malnutrition forms to the nearest nutrition services to continue receiving treatment and follow up

Summary for Nutrition Indicators Aug 2024 in Reporting Gov

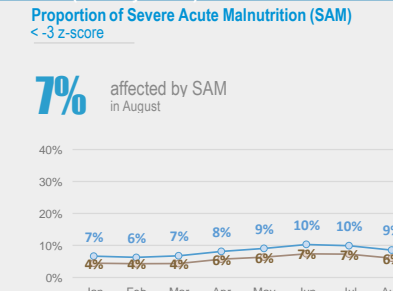
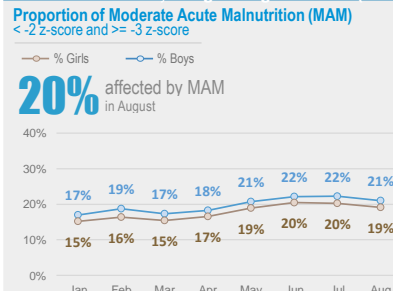
Governorate	# of Screened Children (0-5)	# of Screened Children (6-59)	Proportion of GAM (0-5)	Acute Malnutrition by Z- Score				Acute Malnutrition by MUAC				Underweight		Stunting		Exclusive Breastfeeding		Anemia		Oedema	
				# of MAM	Proportion of MAM	# of SAM	Proportion of SAM	# of MAM	Proportion of MAM	# of SAM	Proportion of SAM	# of Underweight	Proportion of Under weight	# of Stunting	Proportion of Stunting	# of EBF	Proportion of EBF (Yes)	# of Anemia	Proportion of Anemia	# of Oedema	Proportion of Oedema
Al Bayda	782	3,853	15.3%	496	13%	212	6%	434	11%	141	4%	1,685	36%	1,359	35%	127	14%	452	16%	1	0.0%
Al Dhale'e	140	964	28.6%	215	22%	61	6%	186	19%	63	7%	592	53%	458	48%	44	28%	7	4%	0	0.0%
Al Hudaydah	884	5,552	21.8%	1,969	35%	934	17%	1,815	33%	862	16%	4,521	70%	3,105	56%	56	5%	2,013	38%	0	0.0%
Al Jawf	344	2,140	21.5%	329	15%	154	7%	252	12%	102	5%	1,070	43%	852	40%	85	21%	542	27%	0	0.0%
Al Mahwit	1,129	4,332	10.8%	575	13%	166	4%	453	10%	153	4%	2,127	39%	1,854	43%	240	19%	829	19%	1	0.0%
Amanat Al Asimah	2,277	6,934	17.6%	1,441	21%	377	5%	791	11%	209	3%	4,092	44%	3,157	46%	466	18%	809	14%	0	0.0%
Amran	1,165	5,288	13.0%	1,126	21%	413	8%	1,172	22%	471	9%	3,462	54%	2,829	53%	107	8%	1,314	25%	1	0.0%
Dhamar	1,293	4,851	18.6%	857	18%	321	7%	1,029	21%	357	7%	3,633	59%	2,915	60%	137	9%	656	14%	6	0.1%
Hadramaut	1,152	1,395	14.1%	222	16%	79	6%	72	5%	23	2%	765	30%	314	23%	178	15%	103	39%	0	0.0%
Hajjah	1,375	7,459	9.1%	1,091	15%	360	5%	1,018	14%	362	5%	4,154	47%	3,455	46%	155	10%	2,043	27%	1	0.0%
Ibb	2,234	6,334	19.8%	1,339	21%	537	8%	1,087	17%	335	5%	4,241	49%	3,006	47%	398	15%	1,007	16%	30	0.4%
Lahj	172	1,090	18.0%	271	25%	107	10%	157	14%	56	5%	588	47%	287	26%	60	29%	235	25%	0	0.0%
Marib	205	1,632	12.7%	252	15%	103	6%	175	11%	49	3%	686	37%	593	36%	50	21%	192	15%	0	0.0%
Raymah	287	2,066	23.7%	412	20%	106	5%	346	17%	84	4%	1,627	69%	1,483	72%	18	8%	553	27%	0	0.0%
Sa'ada	573	5,321	15.9%	1,244	23%	474	9%	1,377	26%	620	12%	3,656	62%	3,238	61%	124	15%	632	15%	2	0.0%
Sana'a	873	4,518	13.4%	764	17%	240	5%	730	16%	175	4%	2,523	47%	2,009	44%	207	21%	667	15%	0	0.0%
Aden	364	692	26.4%	145	21%	49	7%	55	8%	15	2%	433	41%	229	33%	165	44%	-	-	0	0.0%
Taizz	1,610	5,000	16.1%	1,166	23%	378	8%	992	20%	231	5%	3,435	52%	2,454	49%	361	20%	800	17%	0	0.0%
Abyan	61	538	9.8%	136	25%	60	11%	52	10%	16	3%	318	53%	232	43%	9	14%	20	21%	0	0.0%
Shabwah	86	410	20.9%	52	13%	10	2%	41	10%	3	1%	143	28%	130	32%	-	-	215	53%	0	0.0%



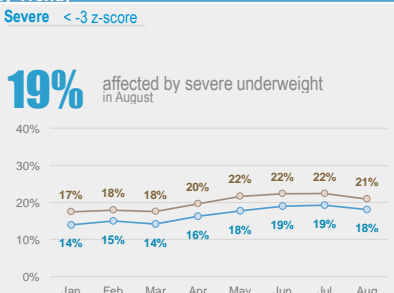
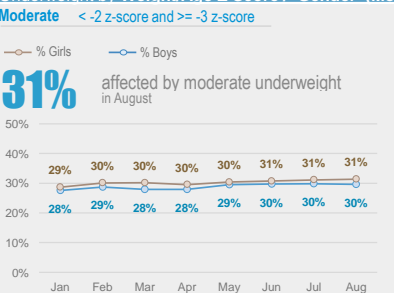
Acute Malnutrition by MUAC / Gender (Monthly Trend)



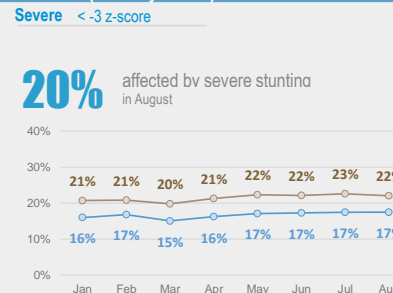
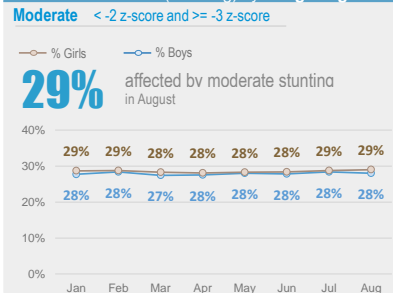
Acute Malnutrition by Weight/Height Z Score (WHZ) / Gender (Monthly Trend)



Underweight by Weight/Age Z Score / Gender (Monthly Trend)



Chronic Malnutrition (Stunting) by Height/Age Z Score / Gender (Monthly Trend)



Exclusive Breastfeeding Aug

