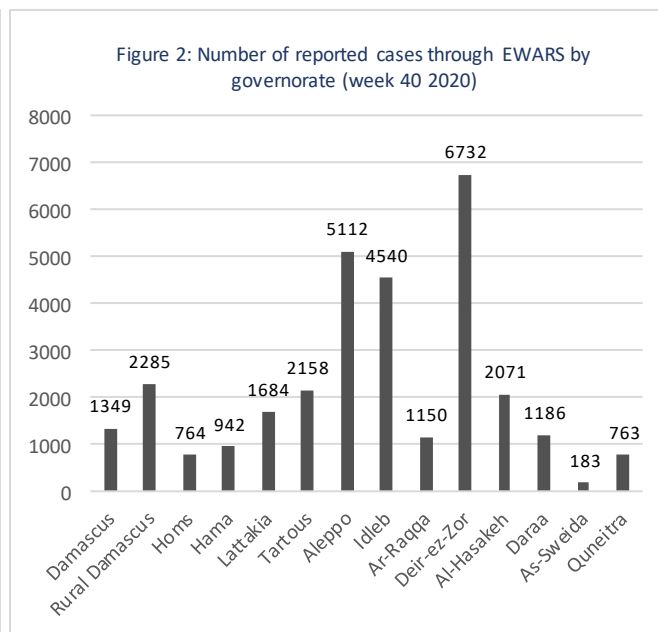
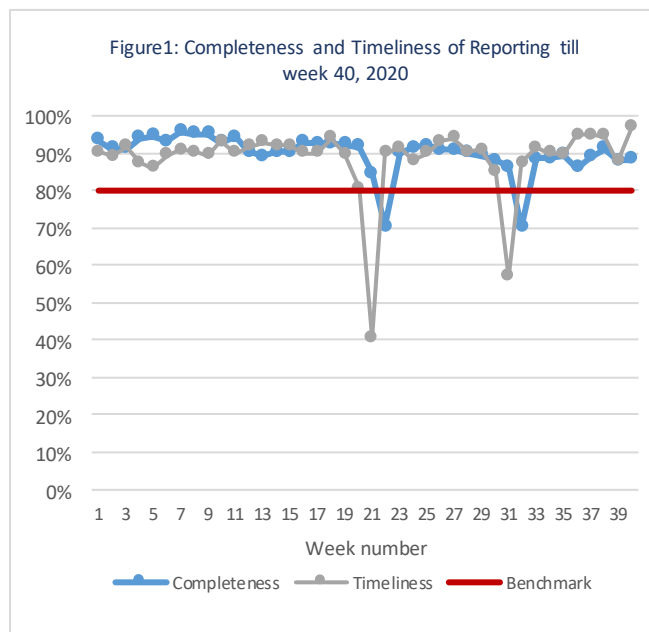


## Highlights

- A total of 208,447 consultations were recorded in all the 14 governorates in week 40.
- The leading causes of morbidity among all age groups influenza-like illnesses (48.3%) and acute diarrhea (33.2%).
- 795 suspected COVID-19 were reported through EWARS system in week 40. The cases increased by 40% to previous week. Most of cases reported in Idlib 154 (19.4%) cases, Rural Damascus 150 (18.9%), and Hama 144 (18.1%). Cases reported by WHO sentinel sites in Idlib were not been investigated due to inaccessibility.
- 6 acute flaccid paralysis case were reported.
- 22 suspected measles cases were reported during week 40. the blood specimens of 10 cases were collected and tested at the reference laboratory in Damascus. The laboratory result showed all negative for measles.
- Increase in SARI cases by 2.2% to previous week. Number of cases in week 40 was 137 SARI cases.
- Number of cases in week 40 was 10,292 AD cases

## Performance Indicators

- A total of 1,150 out of 1,303 active reporting sites (88.3%) in all 14 governorates of Syria reported through EWARS, with 97% timeliness among those sites providing data during week 40 (Figure 1).



## Morbidity

- A total of 208,447 consultations were recorded in 1,303 health facilities in 14 governorates in week 40, 2020. Among them, 30,919 cases were EWARS notifiable health conditions (Figure 2).
- Among all age groups, the leading causes of morbidity influenza-like illnesses (ILI) (48.3%), and acute diarrhea (AD) (33.2%).
- Of the 30,919 total reported cases, 50.3% (15,548) were female, and 42.0% (12,993) were children under 5 years old.
- Among children under 5 years of age, 43.8% of cases are ILI, and AD representing 41.1% of the cases during this reporting period (Figure 3).
- 795 suspected COVID-19 cases registered with 11 among children under 5 years of age, and 784 (4.4%) among cases equal or older than 5 years old.

Figure 3: propositional morbidity by age group in week 40, 2020

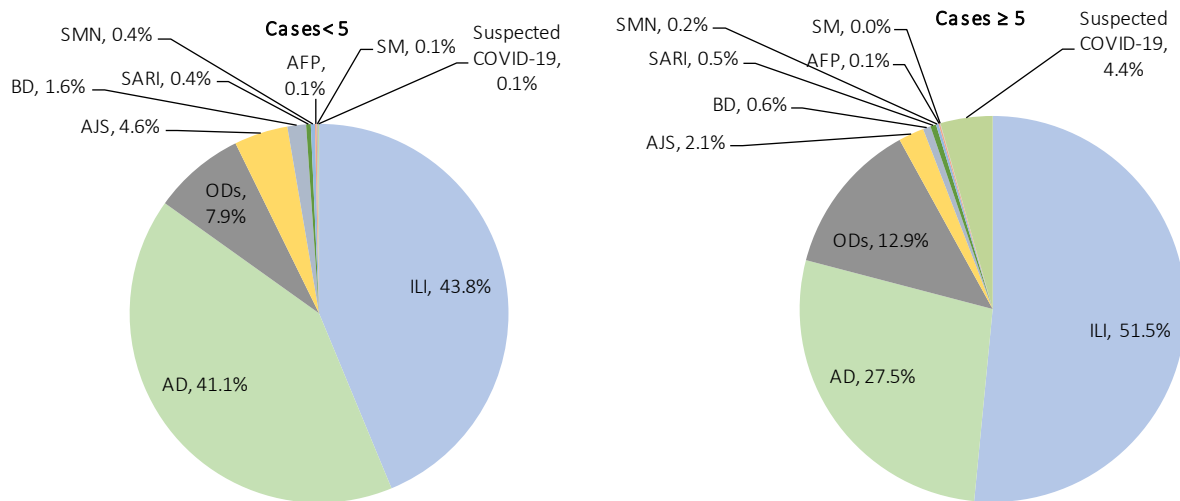
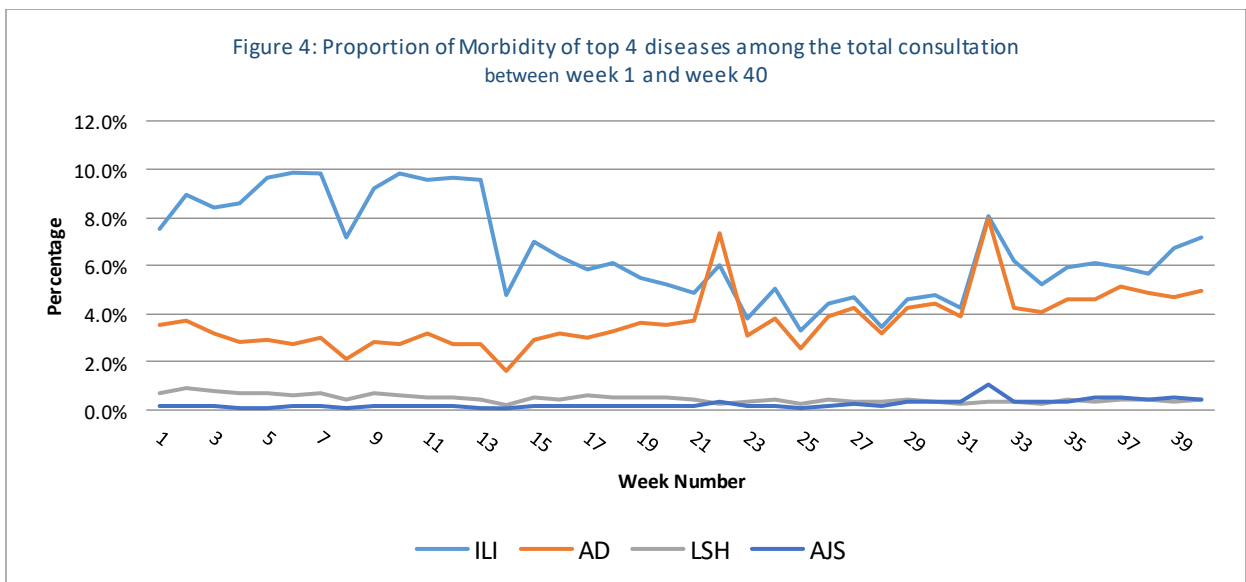
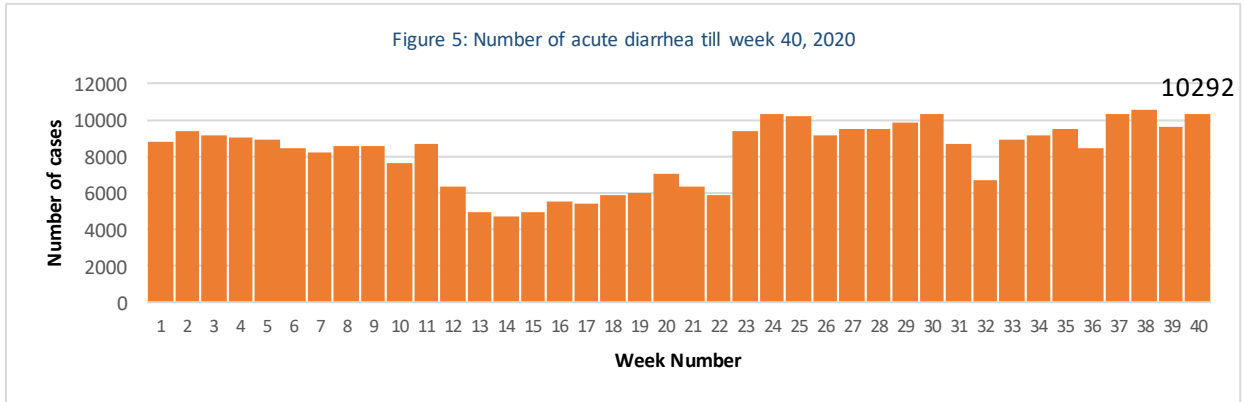


Figure 4: Proportion of Morbidity of top 4 diseases among the total consultation between week 1 and week 40



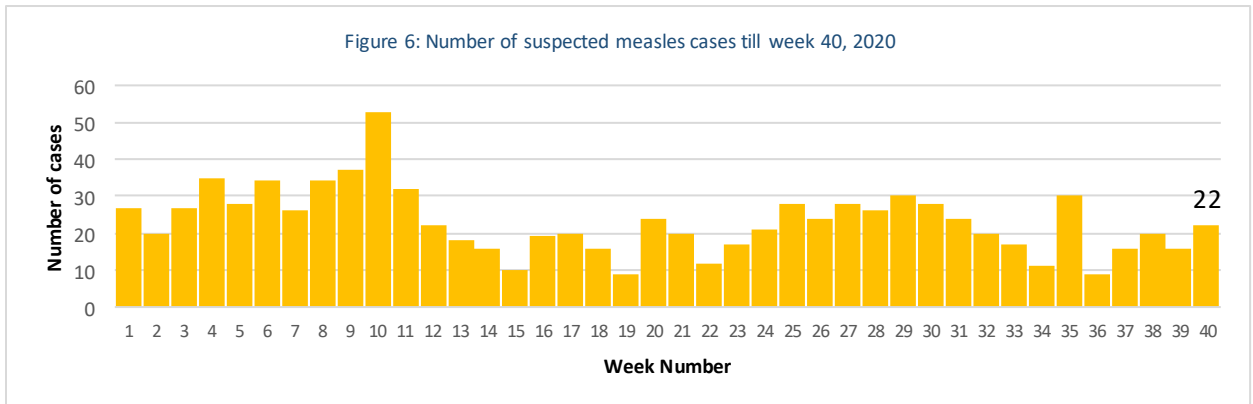
## 1. Waterborne Diseases

- 0 cases of acute watery diarrhea (AWD) in week 40.
- A total of 10,292 AD cases were reported during week 40.



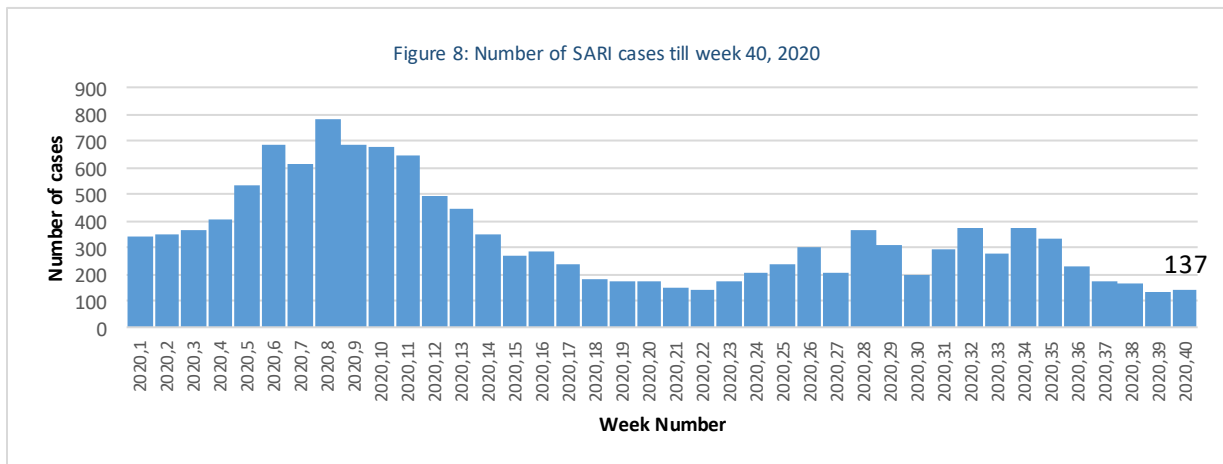
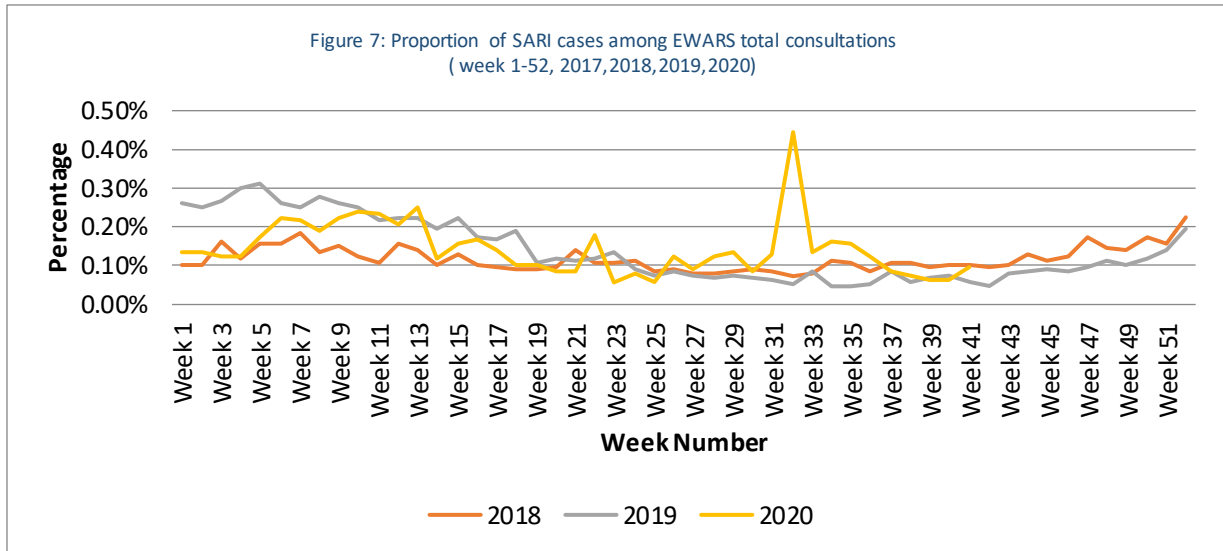
## 2. Vaccine Preventable Diseases

- 6 cases of acute flaccid paralysis (AFP) were reported in week 40
- Number of suspected measles in week 40 was (22) cases. Most cases were reported from Idle b (11), and Deir-ez-Zor (6), and Rural Damascus (3) cases.



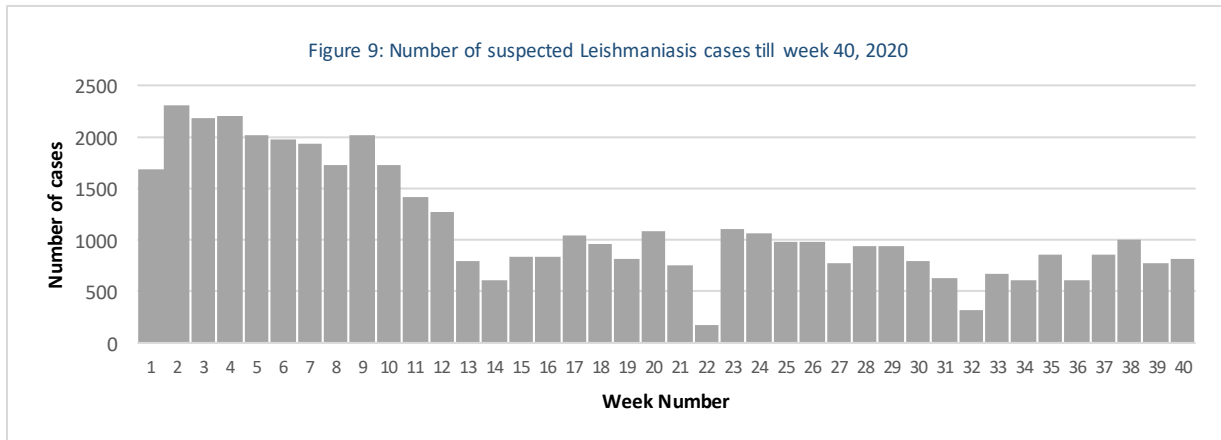
## Respiratory Diseases

- In total, 137 SARI cases were reported during week 40. Figure 7 shows comparison of proportion of SARI cases among EWARS total consultation, the chart shows an increase in week 40 (Figure 7 and 8)
- In total, 14,939 ILI cases were reported during week 40.



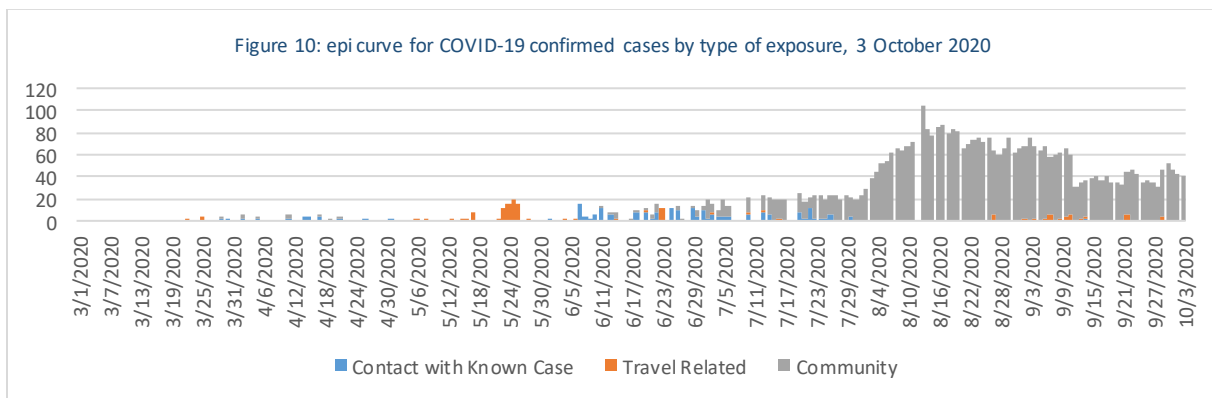
## Other Diseases

- 3,340 cases were reported as “other diseases” through EWARS. The health conditions with the highest incidents were lice (1,222), leishmaniasis (819), and scabies (281).
- During week 40, most of suspected leishmaniasis cases were reported from Aleppo (38.9%), Deir-ez-Zor (29.4%), and Idleb (19.3%)



## COVID-19

During the week 40 MoH reported 291 confirmed COVID-19 cases in Syria including 16 deceased cases through the COVID-19 surveillance. As of 3 October, 4329 cases reported in 13 governorates. cases distributed as follows: 1443 (33.3%) in Damascus, 1035 (23.9%) in Aleppo, 423 (9.8%) in Lattakia, 401 (9.3%) in Rural Damascus, 373 (8.6%) in Homs, 147 (3.4%) in As-Sweida, 142 (3.3%) in Hama, 137 (3.2%) in Tartous, 94 (2.2%) in Dar'a, 79 (1.8%) in Quneitra, 35 (0.8%) in Al-Hasakeh, 13 (0.3%) in Deir-ez-Zor, and 7 (0.2%) in Ar-Raqqa. Number of deaths related to COVID-19 is 204 in 11 governorates, CFR 4.7%. 141 cases (3.3%) are travel related cases, 205 cases (4.7%) are contacts of confirmed cases, and 3983 cases (92%) are community. (Figure 10).



## Public Health Response Actions

### *COVID-19*

- WHO supported three days meeting for MoH surveillance officers, the meeting was conducted between 28 and 30 September, 2020. And was attended by 30 officers (communicable disease directorates at MoH, manager of health directorates, heads of health programs and communicable disease department at DoHs). The objectives of meeting were:
  1. Present the current epidemiological situation of COVID-19 in Syria and the governorates.
  2. Finalize and endorse the new COVID-19 surveillance guideline aiming to improve the detection and response to COVID-19 cases in Syria
  3. endorse the new developed reporting tools; the aim is to improve the quality and timeliness of data shared by the field reporting sites to the central level (Laboratory and CDC central).
- WHO continues to provide needed support for the Rapid response teams to undertake investigation and response of COVID-19 alerts by facilitating the transportation of RRTs, samples collection and transporting to designated laboratory in 4 governorates. During the reporting period than 1145 suspected COVID-19 cases and contacts were investigated properly within 24 hours.

### *Suspected measles*

A total of 22 suspected measles cases were reported during week 40. All the cases were investigated by rapid response teams of the health directorates except for cases reported from Adleb due to accessibility. The blood specimens from 10 suspected cases were collected and tested for IgM ELISA at the reference laboratory in Damascus. The lab results showed negative results for measles for all cases.

### *Acute flaccid paralysis:*

- The stool samples were collected and tested at the polio reference laboratory in Damascus, and the results showed that all cases were negative for poliomyelitis.
- MoH in collaboration with WHO is planning for National Immunization days between 11 and 15 of October 2020. About 2,804,279 children (aged 0 to 59 months) in 14 governorates will be targeted with Polio vaccination during the campaign. WHO supports the activity technically and financially and the vaccine procured by UNICEF to MOH.

## Comparison with Previous Week by Health Condition

Disease	Week 39	Week 40
Acute diarrhea (AD)	9613	10292
Bloody diarrhea (BD)	304	323
Acute watery diarrhea (AWD)	0	0
Acute jaundice syndrome (AJS)	1032	980
Influenza like illness (ILI)	13723	14939
Acute flaccid paralysis (AFP)	9	6
Suspected measles (SM)	16	22
Suspected meningitis (SMN)	63	85
Typhoid fever (TYF)	304	305
Brucellosis (BRU)	136	129
Suspected tuberculosis (TB)	21	21
Severe acute respiratory infection (SARI)	134	137
Suspected pertussis (PER)	39	70
suspected leishmaniasis (LSH)	768	819
Suspected chickenpox (CHP)	159	154
Scabies (SCA)	346	281
Lice (LIC)	1033	1222
Suspected mumps (MUM)	63	77
COVID-19	572	795
Others	268	262
Total	28603	30919

## Case Distribution by Age Group, and by Governorate

Week 40, 2020

		Idleb	Al-Hasakeh	Ar-Raqqa	As-Sweida	Quneitra	Lattakia	Aleppo	Hama	Homs	Dar'a	Damascus	Deir-ez-Zor	Rural Damascus	Tartous	Total
Acute diarrhoea (AD)	<5	974	523	297	19	68	76	582	207	133	110	174	1874	217	96	5350
	≥5	929	382	205	32	50	95	664	174	109	220	286	1283	258	255	4942
Bloody diarrhoea (BD)	<5	0	7	7	0	0	0	1	0	0	8	1	183	0	0	207
	≥5	0	3	6	0	0	0	2	0	0	2	6	97	0	0	116
Acute watery diarrhoea (AWD)	<5	0	0	0	0	0	0	0	0	0	0	0	0	0	0	0
	≥5	0	0	0	0	0	0	0	0	0	0	0	0	0	0	0
Acute jaundice syndrome (AJS)	<5	70	12	149	0	0	0	15	0	2	5	1	341	2	0	597
	≥5	32	18	98	1	2	0	11	14	12	12	8	153	5	17	383
Influenza like illness (ILI)	<5	592	384	177	47	282	475	1053	102	155	215	131	1026	611	442	5692
	≥5	580	593	183	53	330	665	2148	117	221	477	639	1031	934	1276	9247
Acute flaccid paralysis (AFP)	<5	0	1	0	0	0	0	0	0	0	0	0	0	1	0	2
	≥5	0	0	0	0	0	0	1	0	2	0	0	0	1	0	4
Suspected measles (SM)	<5	6	1	0	0	0	0	1	0	0	0	0	6	1	0	15
	≥5	5	0	0	0	0	0	0	0	0	0	0	0	2	0	7
Suspected meningitis (SMN)	<5	6	0	4	0	0	0	1	2	0	3	2	27	1	0	46
	≥5	18	4	4	0	0	0	2	4	0	1	0	6	0	0	39
Severe acute respiratory infection (SARI)	<5	0	13	0	0	0	0	0	18	0	0	13	1	0	6	51
	≥5	2	4	0	1	0	0	2	8	1	0	33	3	0	32	86
Typhoid fever (TYF)	<5	44	0	2	0	1	0	1	0	0	2	0	34	2	0	86
	≥5	37	2	8	0	0	0	6	15	10	56	0	78	7	0	219
Brucellosis (BRU)	<5	4	0	2	0	0	0	2	1	0	0	0	5	2	0	16
	≥5	14	3	0	0	1	0	12	21	3	14	10	19	16	0	113
Suspected tuberculosis (TB)	<5	1	0	0	0	0	0	0	0	0	0	0	0	0	0	1
	≥5	3	2	0	0	0	0	13	0	0	0	1	0	1	0	20
Suspected pertussis (PER)	<5	13	0	0	0	0	0	3	1	0	0	0	24	0	0	41
	≥5	24	0	0	0	0	0	1	3	0	0	0	1	0	0	29
suspected leishmaniasis (LSH)	<5	68	7	3	0	0	0	56	4	0	0	0	140	0	1	279
	≥5	90	29	0	1	0	1	263	48	0	0	1	101	3	3	540
Suspected chickenpox (CHP)	<5	45	0	1	0	0	1	3	0	1	2	0	8	3	0	64
	≥5	71	2	3	0	1	1	2	3	1	0	1	2	3	0	90



Scabies (SCA)	<5	58	7	0	0	0	0	6	0	3	0	0	9	1	0	84
	≥5	80	2	0	0	6	3	42	12	9	2	1	36	3	1	197
Lice (LIC)	<5	242	4	0	2	0	8	32	3	0	0	0	16	1	2	310
	≥5	324	10	0	2	5	350	120	36	7	0	3	22	28	5	912
Suspected mumps (MUM)	<5	1	1	0	0	0	0	2	0	0	0	0	14	0	0	18
	≥5	53	1	1	0	0	1	1	0	0	0	0	2	0	0	59
Suspected COVID-19	<5	0	0	0	0	1	0	3	0	2	1	4	0	0	0	11
	≥5	154	19	0	25	12	0	61	144	76	29	34	58	150	22	784
Others	<5	0	15	0	0	2	1	0	2	8	4	0	90	1	0	123
	≥5	0	22	0	0	2	7	0	3	9	23	0	42	31	0	139
Total of < 5		2124	975	642	68	354	561	1761	340	304	350	326	3798	843	547	12993
Total of ≥ 5		2416	1096	508	115	409	1123	3351	602	460	836	1023	2934	1442	1611	17926
Grand total		4540	2071	1150	183	763	1684	5112	942	764	1186	1349	6732	2285	2158	30919