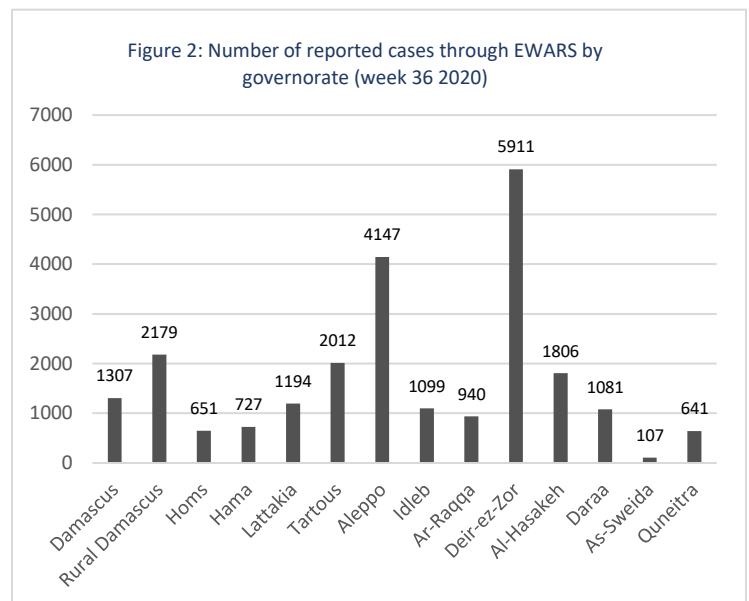
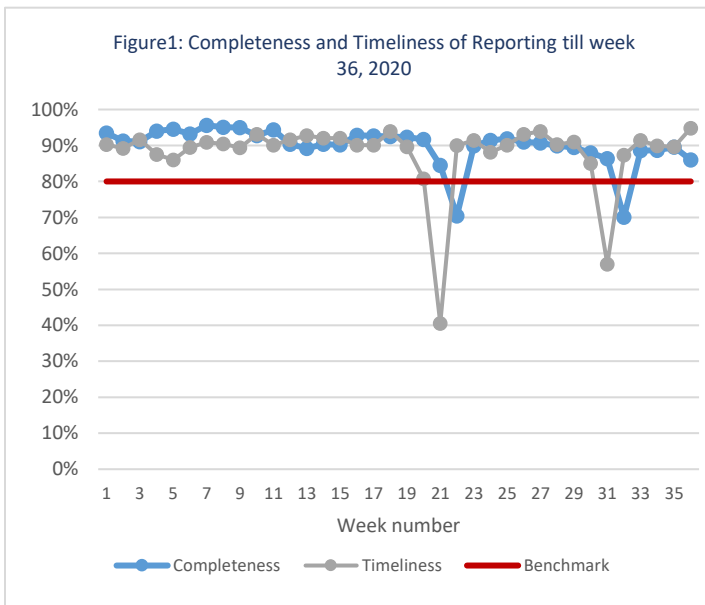


Highlights

- A total of 180,915 consultations were recorded in all the 14 governorates in week 36.
- The leading causes of morbidity among all age groups influenza-like illnesses (46.0%) and acute diarrhoea (35.2%).
- 3 acute flaccid paralysis case were reported.
- 593 suspected COVID-19 cases were reported through EWARS system in week 36. COVID-19 suspected increased in by 30% compared with week 35.
- 9 suspected measles cases were reported during week 36. the blood specimens of 7 cases were collected and tested at the reference laboratory in Damascus. The laboratory result showed all negative for measles.
- Decrease in SARI cases by 31.2% to previous week. Number of cases in week 36 was 227 SARI cases.
- Number of cases in week 36 was 8,391 AD cases

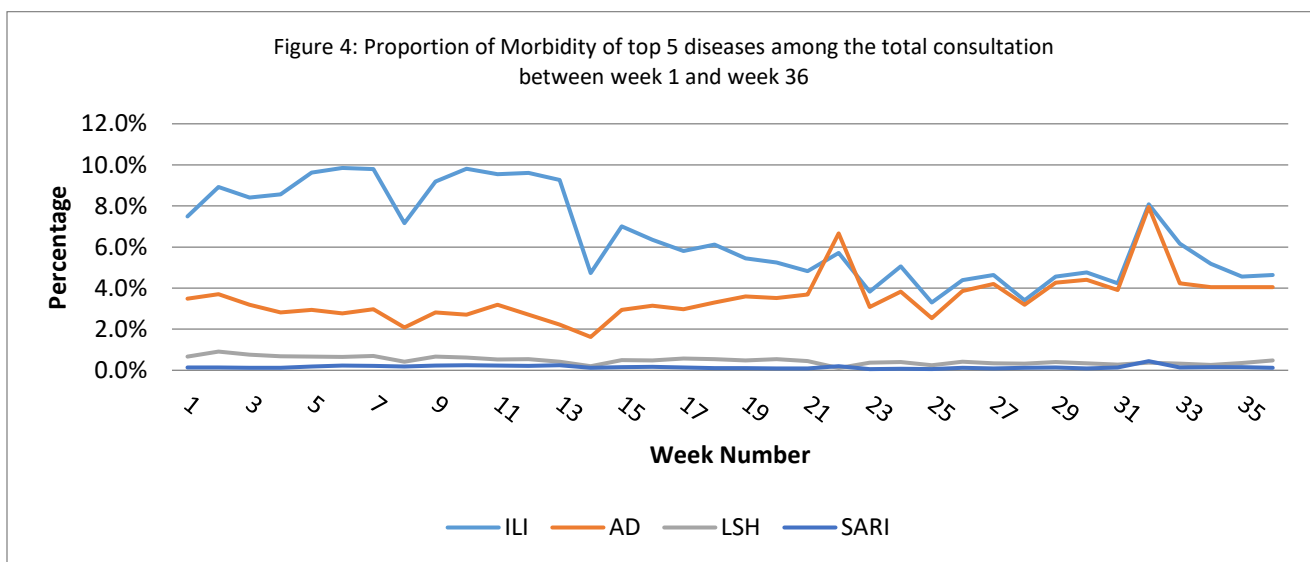
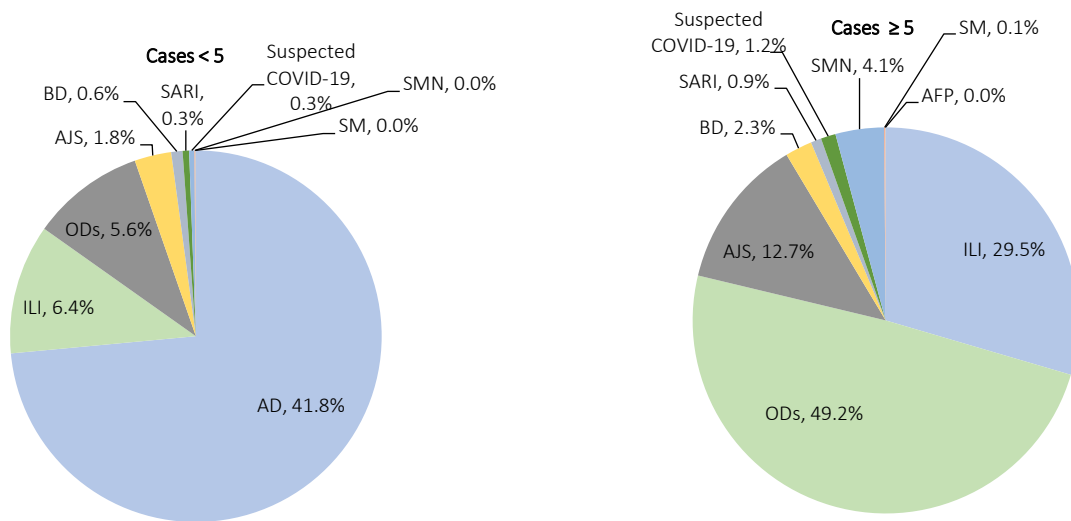
Performance Indicators

- A total of 1,119 out of 1,301 active reporting sites (86.0%) in all 14 governorates of Syria reported through EWARS, with 95% timeliness among those sites providing data during week 36 (Figure 1).



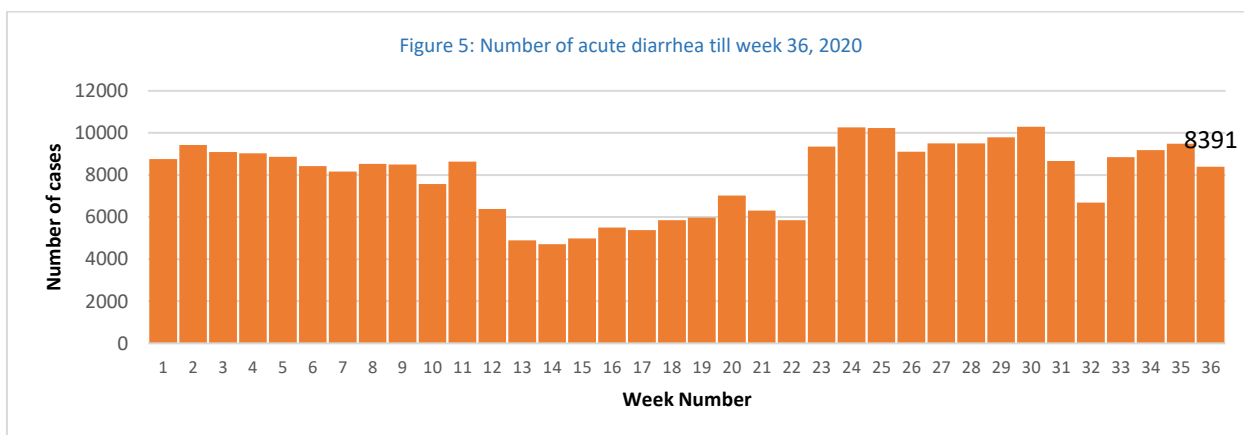
Morbidity

- A total of 180,915 consultations were recorded in 1,301 health facilities in 14 governorates in week 36, 2020. Among them, 23,802 cases were EWARS notifiable health conditions (Figure 2).
- Among all age groups, the leading causes of morbidity influenza-like illnesses (ILI) (46.0%), and acute diarrhoea (AD) (35.2%).
- Of the 17,709 total reported cases, 49.7% (11,830) were female, and 42.0% (10,001) were children under 5 years old.
- Among children under 5 years of age, 41.8% of cases are ILI, and AD representing 43.1% of the cases during this reporting period (Figure 3).
- 593 suspected COVID-19 cases reported with 32 among children under 5 years of age, and 561 (4.06%) among cases equal or older than 5 years old.



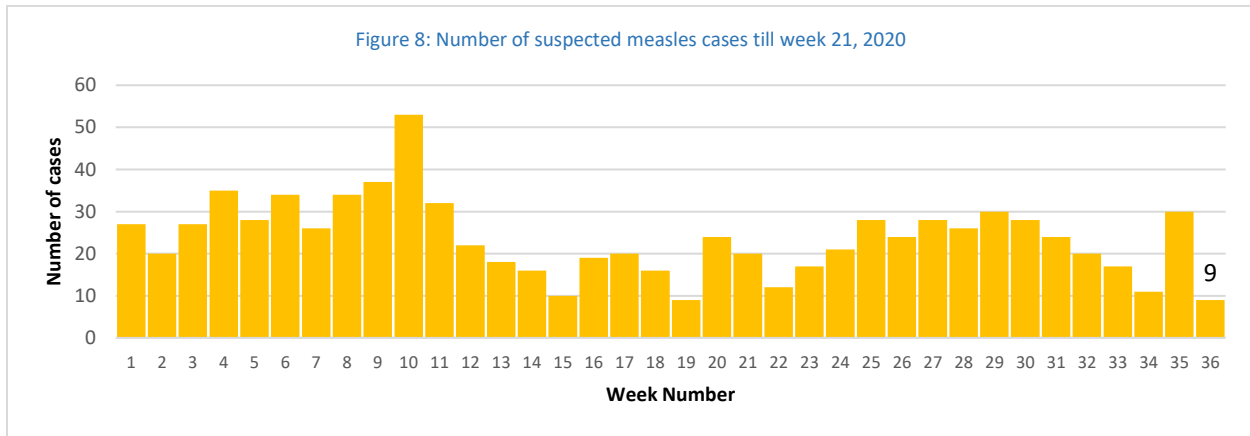
1. Waterborne Diseases

- 0 cases of acute watery diarrhea (AWD) in week 36.
- A total of 8,391 AD cases were reported during week 36.



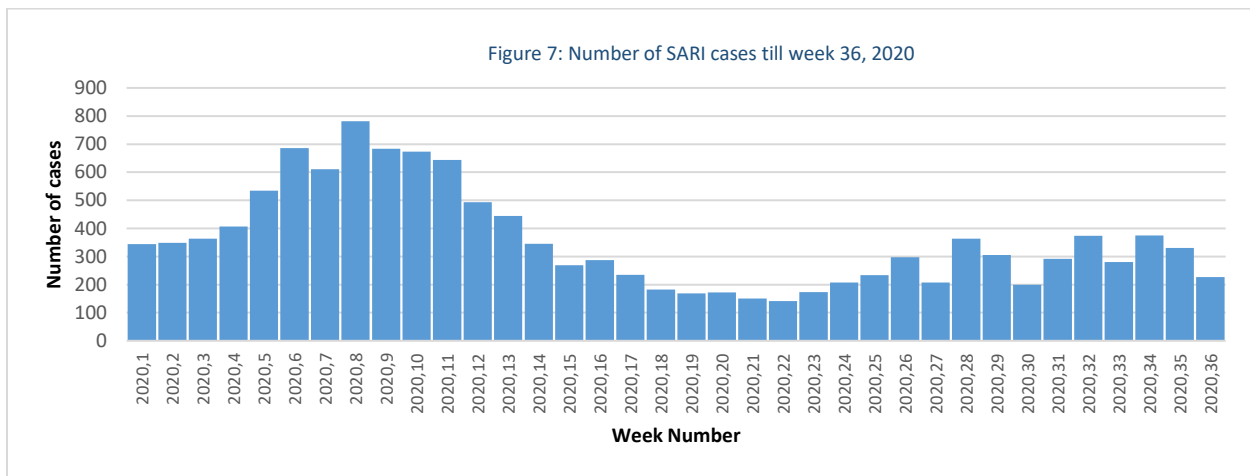
2. Vaccine Preventable Diseases

- 3 cases of acute flaccid paralysis (AFP) were reported in week 36
- Number of suspected measles in week 36 was (9) cases. Most cases were reported from Idleb (2), and Rural Damascus (2)



Respiratory Diseases

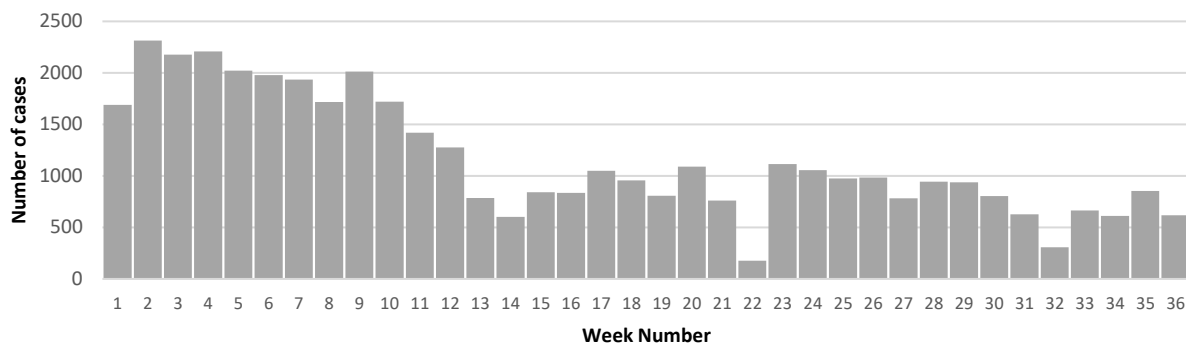
- In total, 227 SARI cases were reported during week 36.
- In total, 10,971 ILI cases were reported during week 36.



Other Diseases

- 2,391 cases were reported as “other diseases” through EWARS. The health conditions with the highest incidents were lice (640), leishmaniasis (617), and scabies (211).
- During week 36, most of suspected leishmaniasis cases were reported from Aleppo (58.3%), Deir-ez-Zor (21.1%), and Hama (7.1%)

Figure 9: Number of suspected Leishmaniasis cases till week 36, 2020



Public Health Response Actions

COVID-19

- The first Covid-19 case in Syria was detected on the 22nd of March 2020. MoH initiated an independent surveillance structure for COVID-19. the integration of COVID-19 among EWARS notified diseases started in week 33. During the week 36, MoH reported 476 confirmed COVID-19 cases in Syria including 19 deceased.
- WHO continues to provide needed support for the Rapid response teams to undertake investigation and response of COVID-19 alerts by facilitating the transportation of RRTs, samples collection and transporting to designated laboratory in 4 governorates. During the reporting period than 1126 suspected COVID-19 cases and contacts were investigated properly within 24 hours during the reporting period.
- WHO efforts are still going on to support MoH to early detection of suspected COVID-19 cases admitted to hospitals through supporting active surveillance visits to 125 hospitals in 13 governorates.

Suspected measles

A total of 9 suspected measles cases were reported during week 36. All the cases were investigated by rapid response teams of the health directorates expect for cases reported from Adleb due to accessibility. The blood specimens from 19 suspected cases were collected and tested for IgM ELISA at the reference laboratory in Damascus. the lab results showed negative results for measles for all cases.

Acute flaccid paralysis:

The stool samples were collected and tested at the polio reference laboratory in Damascus, and the results showed the all cases were negative for poliomyelitis.

Comparison with Previous Week by Health Condition

Disease	Week 35	Week 36
Acute diarrhea (AD)	9487	8391
Bloody diarrhea (BD)	358	304
Acute watery diarrhea (AWD)	2	0
Acute jaundice syndrome (AJS)	748	874
Influenza like illness (ILI)	12313	10971
Acute flaccid paralysis (AFP)	2	3
Suspected measles (SM)	30	9
Suspected meningitis (SMN)	40	39
Typhoid fever (TYF)	378	261
Brucellosis (BRU)	196	174
Suspected tuberculosis (TB)	24	16
Severe acute respiratory infection (SARI)	330	227
Suspected pertussis (PER)	43	19
suspected leishmaniasis (LSH)	855	617
Suspected chickenpox (CHP)	139	88
Scabies (SCA)	367	211
Lice (LIC)	1121	640
Suspected mumps (MUM)	75	41
COVID-19	456	593
Others	242	324
Total	27206	23802

Case Distribution by Age Group, and by Governorate

Week 36, 2020

		Idleb	Al-Hasa keh	Ar-Raqq a	As-Swei da	Qune itra	Latta kia	Alep po	Ham a	Homs	Dar'a	Dam ascus	Deir- ez- Zor	Rural Dam ascus	Tarto us	Total
Acute diarrhea (AD)	<5	265	432	276	15	53	80	569	266	134	143	195	1518	210	157	4313
	≥5	241	331	192	18	79	103	618	179	147	226	318	1043	243	340	4078
Bloody diarrhea (BD)	<5	0	10	9	0	0	1	0	0	0	6	1	155	0	0	182
	≥5	0	4	6	0	0	0	0	0	1	7	2	102	0	0	122
Acute watery diarrhea (AWD)	<5	0	0	0	0	0	0	0	0	0	0	0	0	0	0	0
	≥5	0	0	0	0	0	0	0	0	0	0	0	0	0	0	0
Acute jaundice syndrome (AJS)	<5	16	1	104	0	1	0	0	1	0	0	1	428	2	7	561
	≥5	6	18	76	1	1	0	2	10	1	11	6	156	6	19	313
Influenza like illness (ILI)	<5	101	355	137	18	169	328	820	35	82	203	93	976	571	294	4182
	≥5	112	519	117	23	263	379	1575	27	122	375	499	782	865	1131	6789
Acute flaccid paralysis (AFP)	<5	0	1	0	0	0	0	0	0	0	0	0	0	1	1	3
	≥5	0	0	0	0	0	0	0	0	0	0	0	0	0	0	0
Suspecte d measles (SM)	<5	1	1	0	0	0	0	1	0	0	0	0	0	1	0	4
	≥5	1	2	0	0	0	1	0	0	0	0	0	0	1	0	5
Suspecte d meningiti s (SMN)	<5	1	0	3	1	0	0	0	8	2	1	1	9	0	0	26
	≥5	2	0	3	0	0	0	1	1	0	3	0	2	0	1	13
Severe acute respirator y infection (SARI)	<5	0	13	0	0	0	0	2	14	0	0	14	5	0	8	56
	≥5	0	7	0	2	0	11	36	6	1	0	90	2	0	16	171
Typhoid fever (TYF)	<5	15	0	0	0	0	0	4	0	0	2	0	37	2	0	60
	≥5	12	2	6	0	0	0	4	13	9	31	0	117	6	1	201
Brucellosi s (BRU)	<5	4	0	1	0	0	0	0	0	1	0	0	4	3	0	13
	≥5	3	8	2	0	1	0	11	22	15	15	8	23	53	0	161
Suspecte d tuberculo sis (TB)	<5	0	0	0	0	0	0	1	0	0	0	0	0	0	0	1
	≥5	0	0	0	0	0	0	6	0	0	0	2	0	4	3	15
Suspecte d pertussis (PER)	<5	1	0	0	0	0	0	0	0	0	0	0	12	0	0	13
	≥5	3	0	0	0	0	0	0	0	0	0	0	3	0	0	6
suspected leishmani asis (LSH)	<5	16	2	0	0	0	0	62	0	0	0	1	42	0	0	123
	≥5	25	7	2	2	0	3	298	44	3	0	3	88	4	15	494
Suspecte d chickenp ox (CHP)	<5	9	5	1	0	1	0	4	0	1	0	1	26	2	0	50
	≥5	19	0	4	0	2	0	5	1	0	0	1	0	6	0	38
Scabies (SCA)	<5	16	6	0	0	0	0	10	0	1	4	1	27	1	0	66
	≥5	27	3	0	3	3	4	32	18	18	6	1	24	2	4	145
Lice (LIC)	<5	76	2	0	0	4	50	13	5	1	0	0	29	6	0	186
	≥5	103	8	0	0	12	218	35	30	9	2	2	21	12	2	454
Suspecte	<5	0	1	0	0	0	0	1	1	1	0	0	16	0	0	20

d mumps (MUM)	≥ 5	11	2	1	0	0	0	1	0	1	0	1	4	0	0	21
COVID-19	< 5	0	0	0	0	11	0	0	0	2	0	18	0	0	1	32
	≥ 5	13	18	0	24	23	8	30	42	61	20	48	137	129	8	561
Others	< 5	0	11	0	0	3	1	0	1	16	3	0	68	4	3	110
	≥ 5	0	37	0	0	15	7	6	3	22	23	0	55	45	1	214
Total of < 5		521	840	531	34	242	460	1487	331	241	362	326	3352	803	471	10001
Total of ≥ 5		578	966	409	73	399	734	2660	396	410	719	981	2559	1376	1541	13801
Grand total		1099	1806	940	107	641	1194	4147	727	651	1081	1307	5911	2179	2012	23802