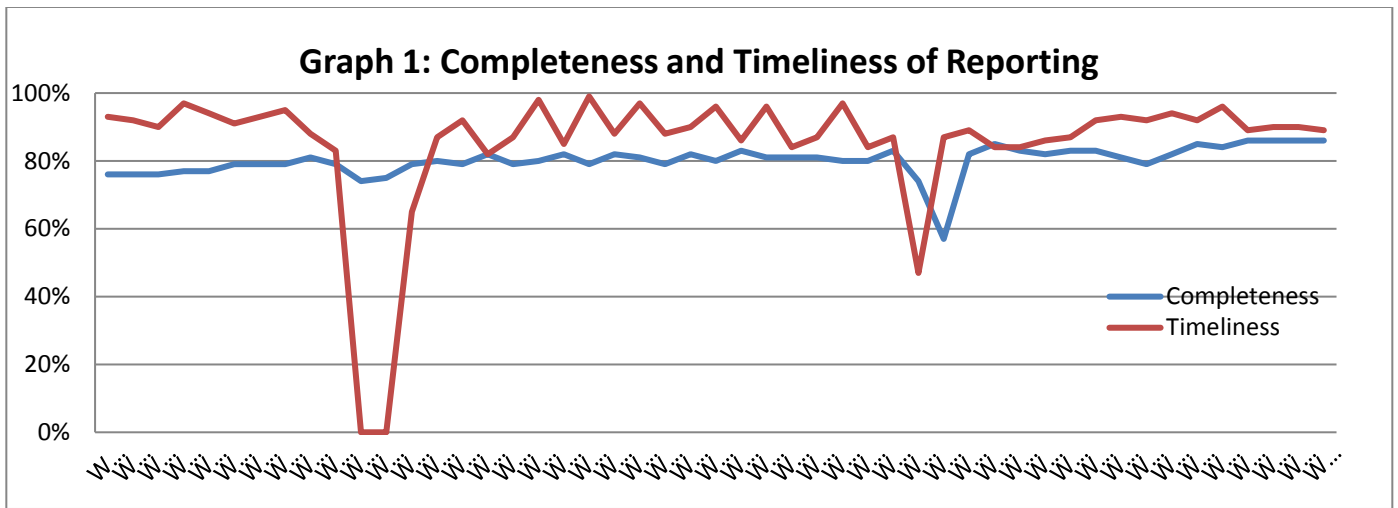


Highlights:

- ❖ 47 clustered cases of mushroom poisoning, in addition to three children deaths were reported between 29 November and 2 December in Daraa governorate.
- ❖ 4 cases of acute paralysis flaccid reported from Dair Zour (2), Tartous (1) and Aleppo (1).

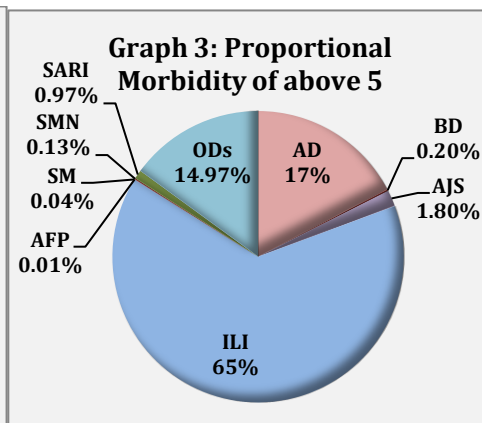
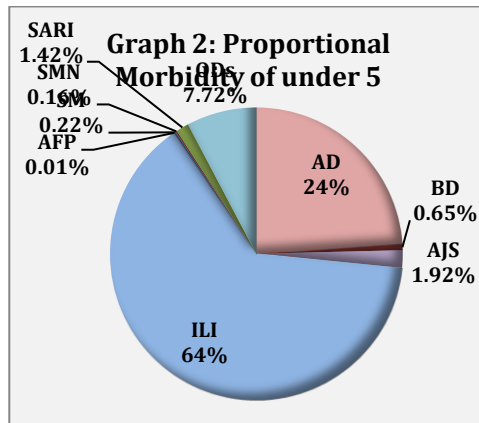
Completeness & Timeliness of Reporting

- ❖ The overall completeness of reporting was 86 %; (1087 out of total 1265 EWARS sentinel sites). 14 governorates have reported this week.
- ❖ Timeliness of reporting was 93%.

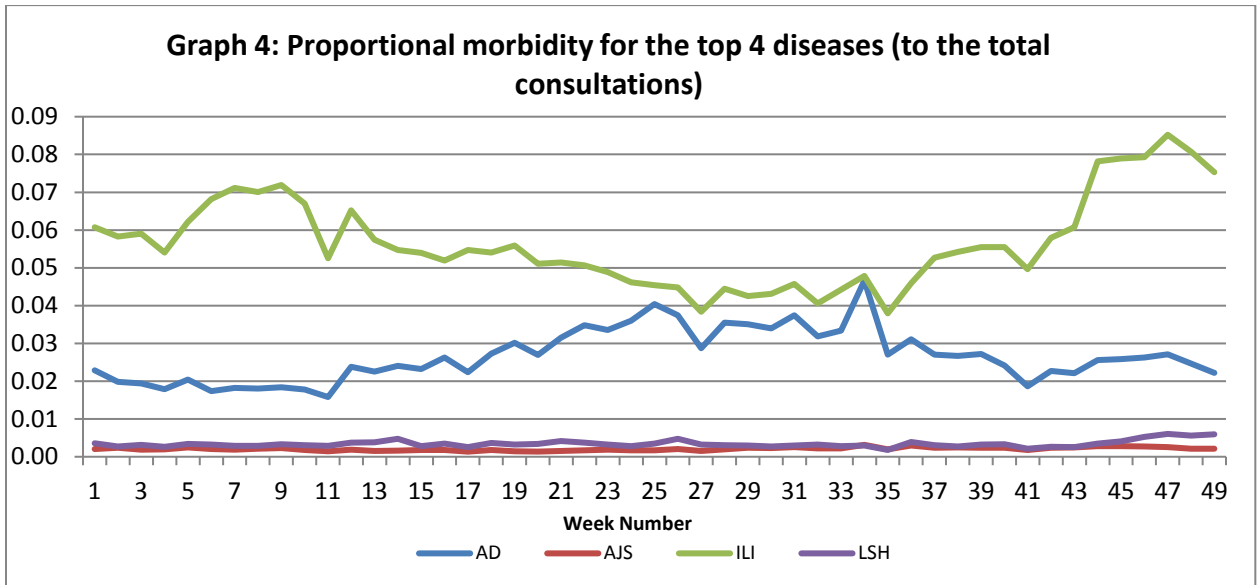


The Morbidity Cases

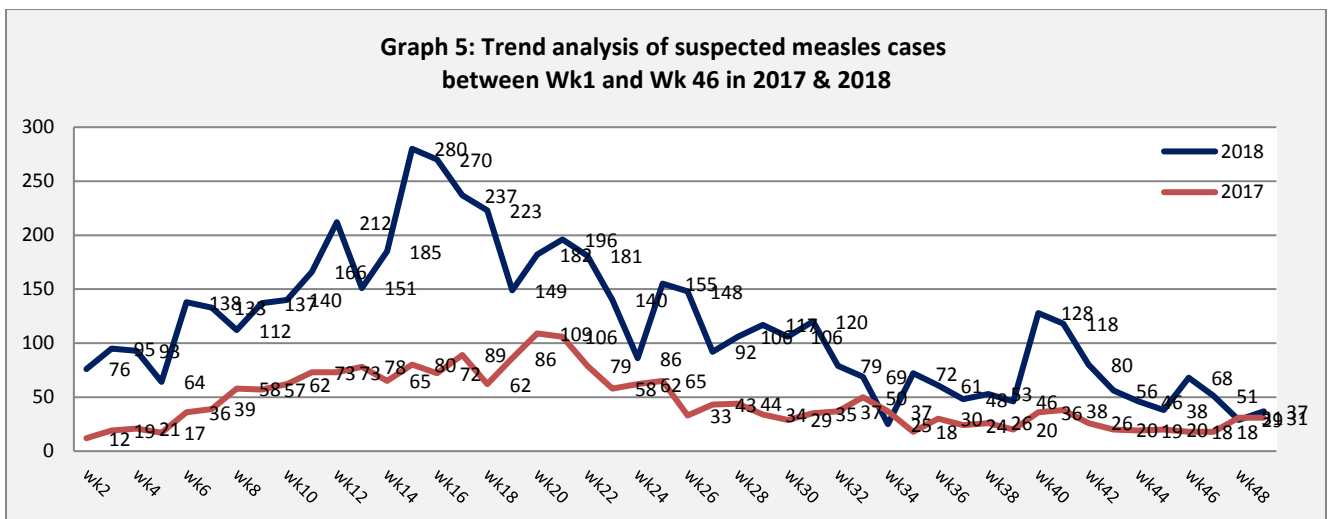
- ❖ Out of a total of 272,421 consultations, 33,380 EWARS notifiable cases were reported; of which 21,748 cases were influenza like illness (64%), 6,757 cases were acute diarrhoea (20%), 624 were acute jaundice syndrome, 389 were severe acute respiratory infection, 37 were suspected measles, 127 were bloody diarrhoea, 49 were suspected meningitis, and 4 case of acute flaccid paralysis.
- ❖ Graphs 2 and 3 below show the proportional morbidity among < 5 and ≥ 5 year age groups respectively.



- ❖ Acute diarrhoea constitutes (24%) among < 5 and (17%) among ≥ 5, while influenza-like illness constitutes (64%) of the cases among <5 and (65%) of the cases among ≥ 5 years old.
- ❖ 50% of the cases were distributed among males. 58% of the cases were distributed among ≥5 age group.
- ❖ In total 4,091 cases were reported as “other diseases”. The most important diseases reported within this group were; 1,746 cases of leishmaniasis (mostly from Deir Ezzor and Aleppo), 96 cases of brucellosis, 165 cases of typhoid, 9 cases of tuberculosis, 71 pertussis, and 53 mumps.
- ❖ Graph 4: shows the trend analysis of top four diseases to total consultations. An increase of ILI is reported which is in line with the seasonality of the disease.



- ❖ Graph 5: the below graph shows the trend analysis of suspected measles cases reported through EWARS.



- ❖ Table 1 shows comparison between reported cases in week-48 and week-49 2018.

Table 1: Comparison between reported cases for week 48 and week 49 in 2018.

Disease	48	49
AD	6,265	6,757
BD	123	127
AWD	0	0
AJS	540	624
ILI	19,867	21,748
AFP	2	4
SM	29	37
SMN	59	49
SARI	352	389
TYF	185	165
PER	48	71
LSH	1405	1746
BRU	112	96
TB	6	9
SCA	398	527
LIC	854	830
CHP	206	208
MUM	42	53
Others	459	390
Total	30952	33830

❖ The Response

Food poisoning cases in Daraa:

On 3 December Daraa DoH reported 47 clustered cases of mushroom poisoning, and three children deaths. cases were reported between 29 November and 2 December. Symptoms include abdominal pain, vomiting, general asthenia, and diarrhea. The cases were detected in Sukareia area in Nawa district. The rapid response team of Daraa has suggested poisoning is consequence of contamination with some kind of toxins, rather than related to the type of mushroom, as it is usually consumed by the local households with no previous poisoning history. DoH tested samples of mushroom at the laboratories of Local Administration & Environment, to check Residual pesticide and heavy metal poisoning.

Table-2: Distribution of cases per age group, and by Governorate-week-49, 2018:

Code	age group	Idleb	Hassaka	Raqqa	Sweida	Qunaitra	Lattakia	Aleppo	Hama	Homs	Daraa	Damascus	DierEzor	Rural Damascus	Tartous	Grand Total
AD	< 5	617	186	91	80	58	317	271	156	67	95	511	660	284	155	3,548
	≥ 5	625	192	108	84	53	240	299	143	90	110	321	668	207	69	3,209
BD	< 5	0	22	7	3	0	0	0	0	0	2	4	2	0	0	40
	≥ 5	0	18	18	5	0	2	0	1	1	3	1	38	0	0	87
AWD	< 5	0	0	0	0	0	0	0	0	0	0	0	0	0	0	0
	≥ 5	0	0	0	0	0	0	0	0	0	0	0	0	0	0	0
AJS	< 5	26	16	46	13	6	8	29	45	12	74	25	36	19	12	367
	≥ 5	23	8	72	5	4	0	13	9	3	37	13	67	3	0	257
ILI	< 5	886	401	109	372	693	1,733	1,838	236	272	758	936	1,634	1,422	1,900	13,190
	≥ 5	975	299	70	297	262	1,375	1,070	382	179	393	504	1,318	775	659	8,558
AFP	< 5	0	0	0	0	0	0	1	0	0	0	0	0	0	1	2
	≥ 5	0	0	0	0	0	0	0	0	0	0	0	2	0	0	2
SM	< 5	2	0	2	0	0	0	1	0	0	0	0	3	0	0	8
	≥ 5	0	4	3	0	0	0	4	0	1	0	1	15	1	0	29
SMN	< 5	3	2	2	0	0	0	1	12	0	0	4	0	0	3	27
	≥ 5	1	0	4	1	0	2	0	2	0	0	3	9	0	0	22
SARI	< 5	0	10	23	12	0	4	2	43	1	0	56	38	0	10	199
	≥ 5	0	31	21	1	0	4	2	59	1	0	26	44	0	1	190
Others	< 5	289	111	69	29	21	210	493	242	75	24	43	1,265	163	27	3,061
	≥ 5	56	137	21	28	2	14	173	36	36	7	15	467	38	4	1,034
Total Sum of < 5		1,823	748	349	509	778	2,272	2,636	734	427	953	1,579	3,638	1,888	2,108	20,442
Total Sum of ≥ 5		1,680	689	317	421	321	1,637	1,561	632	311	550	884	2,628	1,024	733	13,388
Total		3,503	1,437	666	930	1,099	3,909	4,197	1,366	738	1,503	2,463	6,266	2,912	2,841	33,830