

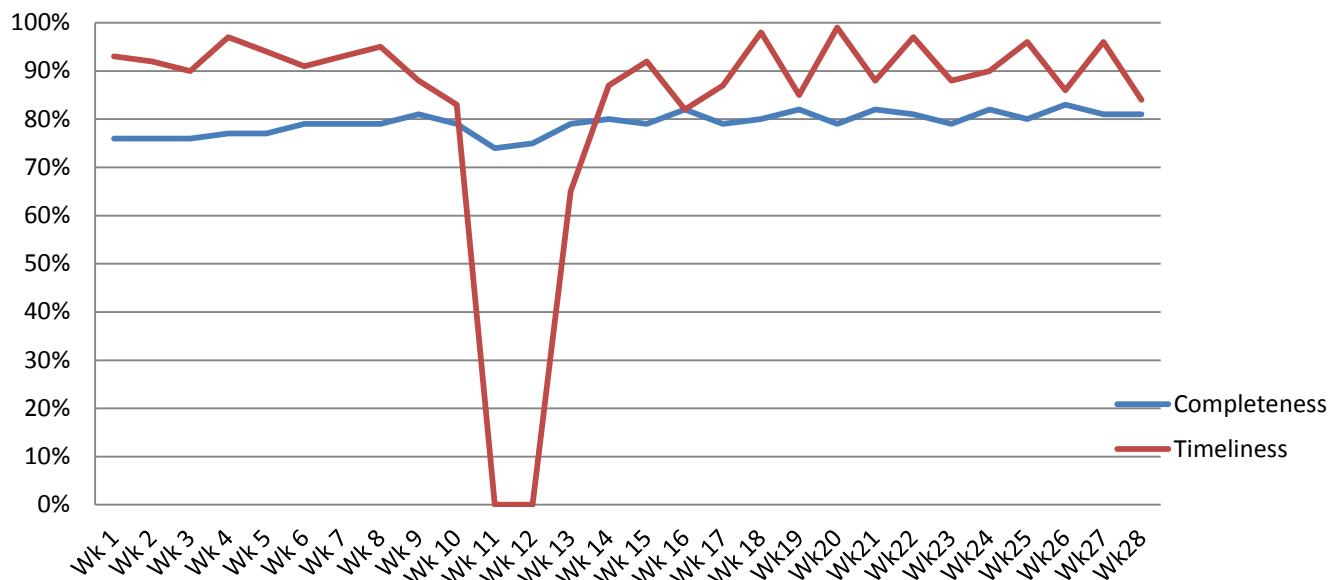
### Highlights:

- ❖ (106) suspected Measles cases were reported mainly from Raqqa (53), Hassaka (29), and Deir Ezzor (11).
- ❖ The number of Typhoid suspected cases have slightly decreased this week; in week 28 numbers of probable cases are 92 cases.

### ❖ Completeness & Timeliness of Reporting

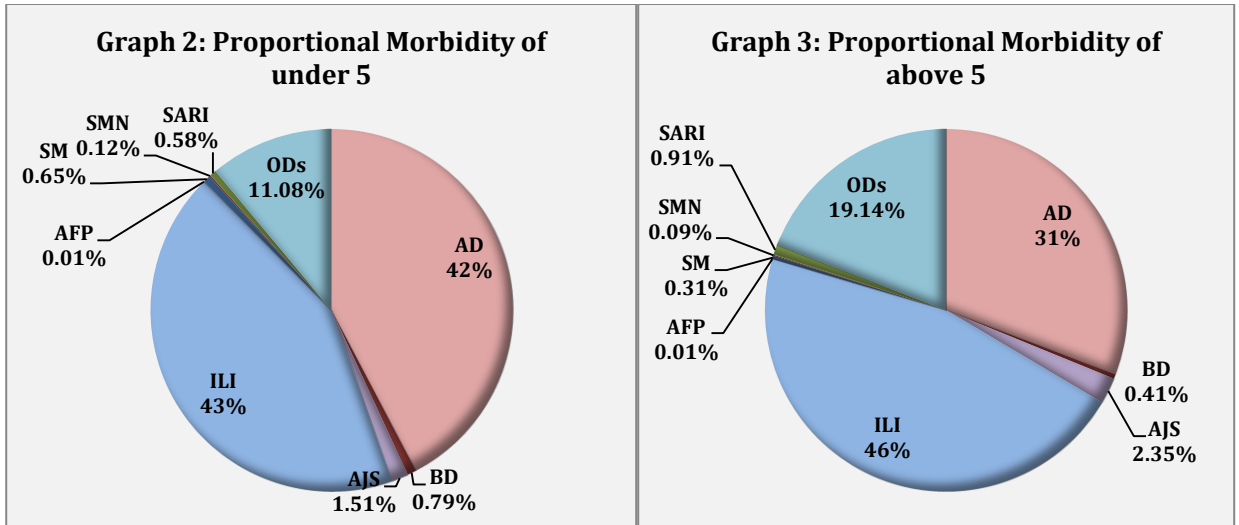
- ❖ The overall completeness of reporting was 81%; (1027 out of total 1267 EWARS sentinel sites). 14 governorates have reported this week.
- ❖ Timeliness of reporting was 84%.

**Graph 1: Completeness and Timeliness of Reporting**

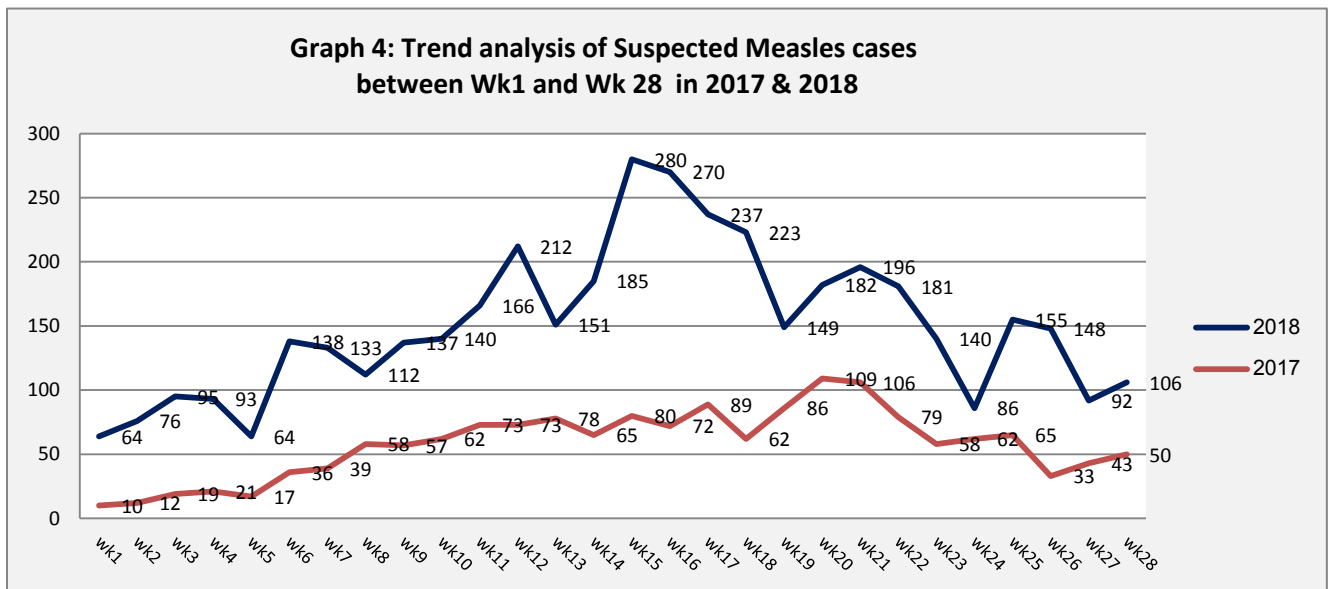


### ❖ The Morbidity Cases

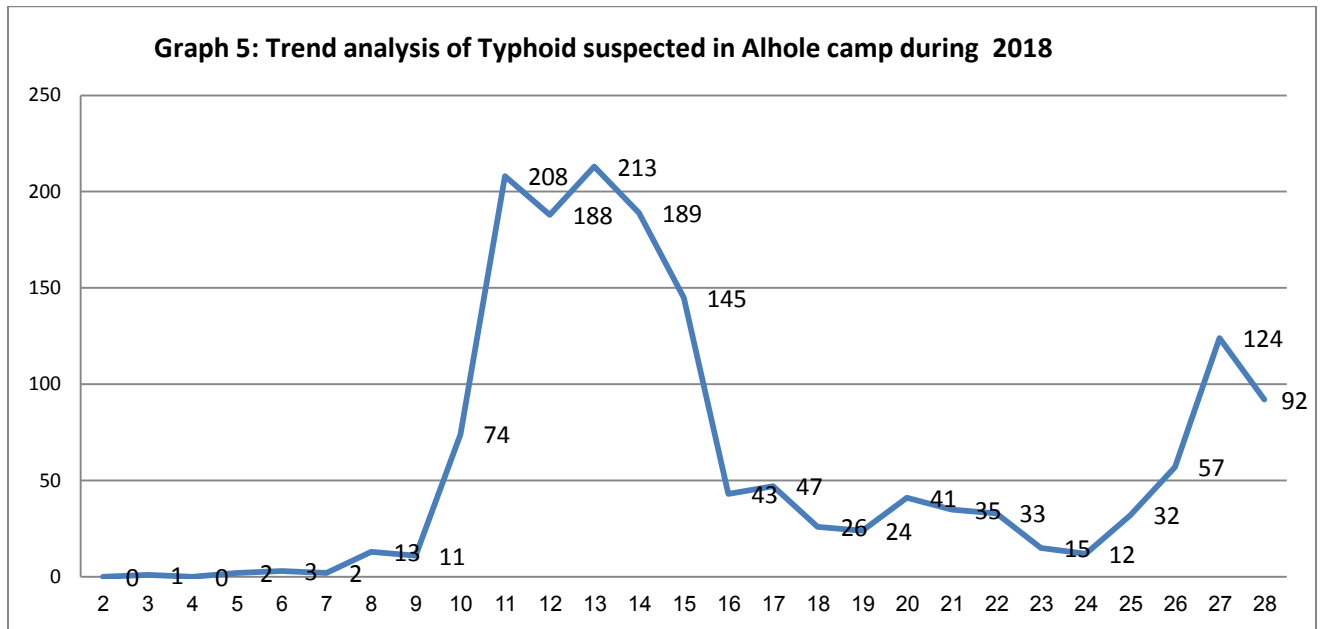
- ❖ Out of the 217,315 total consultations, a total of 23,445 EWARS notifiable cases were reported; of which 10,487 cases were Influenza like Illness (45%), 8,356 cases were Acute Diarrhoea (36%), 468 cases of AJS, 133 cases of Bloody Diarrhoea, 180 cases of Sever Acute Respiratory Infection, 106 cases of Suspected Measles, and 24 cases of Suspected Meningitis.
- ❖ **Graphs 2 and 3 below** show the proportional morbidity among < 5 and ≥ 5 year age groups respectively.



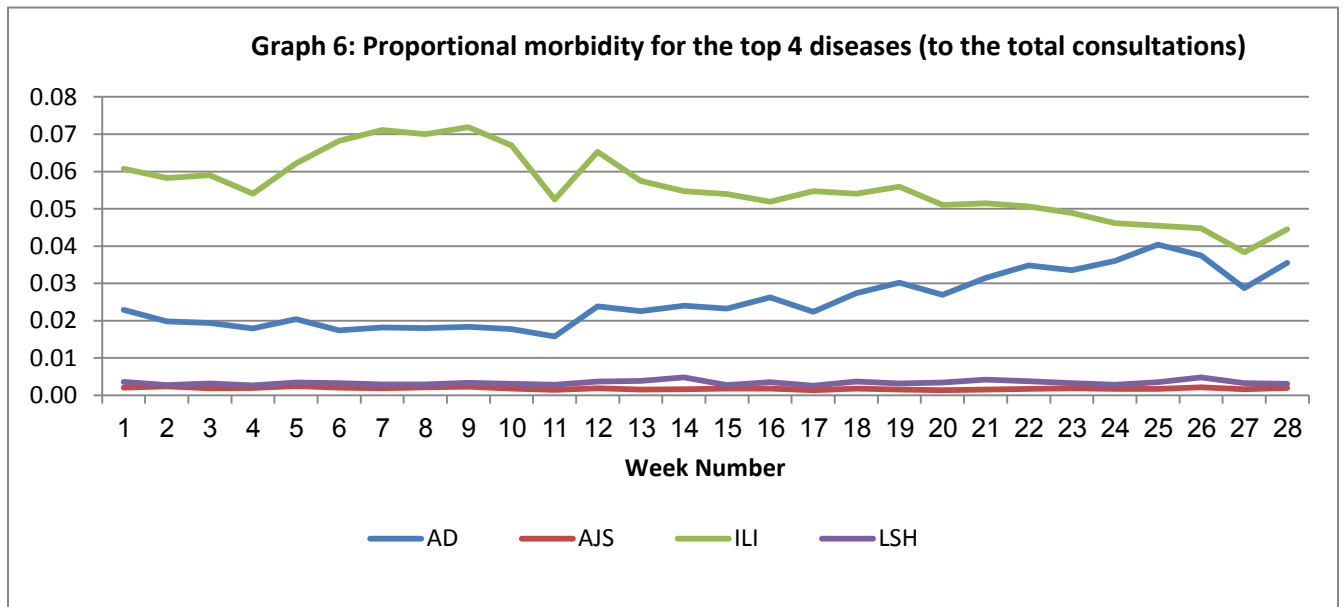
- ❖ 51% of the cases were distributed among males. 58% of the cases were distributed among  $\geq 5$  age group.
- ❖ AD constitutes (42%) among  $< 5$  and (31%) among  $\geq 5$ , while ILI constitutes (43%) of the cases among  $< 5$  and (46%) among  $\geq 5$ .
- ❖ In total 3,689 cases were reported as “other diseases”. The most important diseases reported within this group were; 696 cases of Leishmaniasis (mostly from Aleppo, Idlib and Hama), 271 cases of Brucellosis, 331 cases of Typhoid, 14 cases of TB.
- ❖ **Graph 4:** shows the trend analysis of suspected Measles cases reported between week 1 and week 28 of 2017 and 2018. It shows re-increase in reported cases from week 25



**Graph 5: Trend analysis of suspected Typhoid cases in Alhole camp.** The graph indicates that cases have started to re-increase again since week 24:



**Graph 6** shows the trend analysis of top four diseases to total consultations. It shows an increase in the trend of Acute Diarrhea cases in this week, this increase is synchronized with summer season.



- ❖ The table below shows comparison between reported cases in week-27 and week-28 2018.

**Table 1: Comparison between reported cases for week 27 & week 28 in 2018.**

Disease	1st Week	2nd Week
	27	28
AD	7,974	8,356
BD	120	133
AWD	0	0
AJS	436	468
ILI	10,374	10,487
AFP	6	2
SM	92	106
SMN	42	24
SARI	144	180
TYF	310	331
PER	43	70
LSH	817	696
BRU	260	271
TB	172	14
SCA	434	470
LIC	567	548
CHP	494	397
MUM	23	33
Others	980	859
<b>Total</b>	<b>23288</b>	<b>23445</b>

## ❖ The Response

### **Measles:**

The first round of measles campaign will start on 15 July for 2 weeks, targeting children (7 months - 6 years) in 7 governorates: Rural Damascus, Aleppo, Homs, Hama, Al-Hassakeh, Deir-ez-Zor, Ar-Raqqa. The estimation targeted group is 1,244,041. WHO will cover the operational costs of the campaign; training more than 3000 field workers will participate in the campaign, and securing the transportation means for field workers.

### **Typhoid cases in Alhole camp:**

The increase of suspected typhoid cases continues this week, with 92 new cases reported in week 28. Total number of suspected cases up to week 28 is 1,630. Blood specimens were collected from 5 suspected cases and tested at WHO reference lab in Beirut. Results for the 5 samples were negative for salmonella typhii. WHO and partners distributed soap and water purification sachets to households and explained to them how they could take simple measures to reduce the risk of the disease. WHO provided antibiotics to treat typhoid patients, and investigated water sources.

**Table-2: Distribution of cases per age group, and by Governorate-week-28, 2018:**

Code	age group	Idleb	Hassaka	Raqqa	Sweida	Qunaitra	Lattakia	Aleppo	Hama	Homs	Daraa	Damascus	DierEzor	Rural Damascus	Tartous	Grand Total
AD	< 5	133	267	97	201	99	378	643	222	181	117	633	653	486	83	4,193
	≥ 5	98	185	53	181	78	525	634	122	150	120	605	564	620	228	4,163
BD	< 5	0	31	16	9	0	2	0	0	1	3	7	9	0	0	78
	≥ 5	0	23	10	5	0	1	1	0	2	1	12	0	0	0	55
AWD	< 5	0	0	0	0	0	0	0	0	0	0	0	0	0	0	0
	≥ 5	0	0	0	0	0	0	0	0	0	0	0	0	0	0	0
AJS	< 5	5	10	42	1	0	2	20	11	6	7	12	26	5	3	150
	≥ 5	3	24	34	4	0	24	52	58	17	9	21	31	29	12	318
ILI	< 5	0	187	13	165	127	863	703	91	99	134	355	483	827	210	4,257
	≥ 5	0	176	9	158	264	1,099	974	84	90	310	602	440	1,452	572	6,230
AFP	< 5	0	0	0	0	0	0	0	0	0	0	0	0	0	1	1
	≥ 5	0	0	0	0	0	0	1	0	0	0	0	0	0	0	1
SM	< 5	0	17	28	0	0	2	2	1	0	0	5	8	1	0	64
	≥ 5	0	12	25	0	0	1	0	1	0	0	0	3	0	0	42
SMN	< 5	0	0	1	1	0	0	1	5	0	1	2	0	0	1	12
	≥ 5	0	0	0	1	0	0	1	6	0	0	4	0	0	0	12
SARI	< 5	0	5	11	1	0	0	1	15	0	0	24	0	0	0	57
	≥ 5	0	2	14	10	0	21	2	13	0	0	61	0	0	0	123
Others	< 5	400	93	39	14	15	8	221	31	19	16	13	100	128	1	1,098
	≥ 5	289	222	81	7	26	38	420	217	45	60	51	510	614	11	2,591
<b>Total Sum of &lt; 5</b>		538	610	247	392	241	1,255	1,591	376	306	278	1,051	1,279	1,447	299	9,910
<b>Total Sum of ≥ 5</b>		390	644	226	366	368	1,709	2,085	501	304	500	1,356	1,548	2,715	823	13,535
<b>Total</b>		<b>928</b>	<b>1,254</b>	<b>473</b>	<b>758</b>	<b>609</b>	<b>2,964</b>	<b>3,676</b>	<b>877</b>	<b>610</b>	<b>778</b>	<b>2,407</b>	<b>2,827</b>	<b>4,162</b>	<b>1,122</b>	<b>23,445</b>