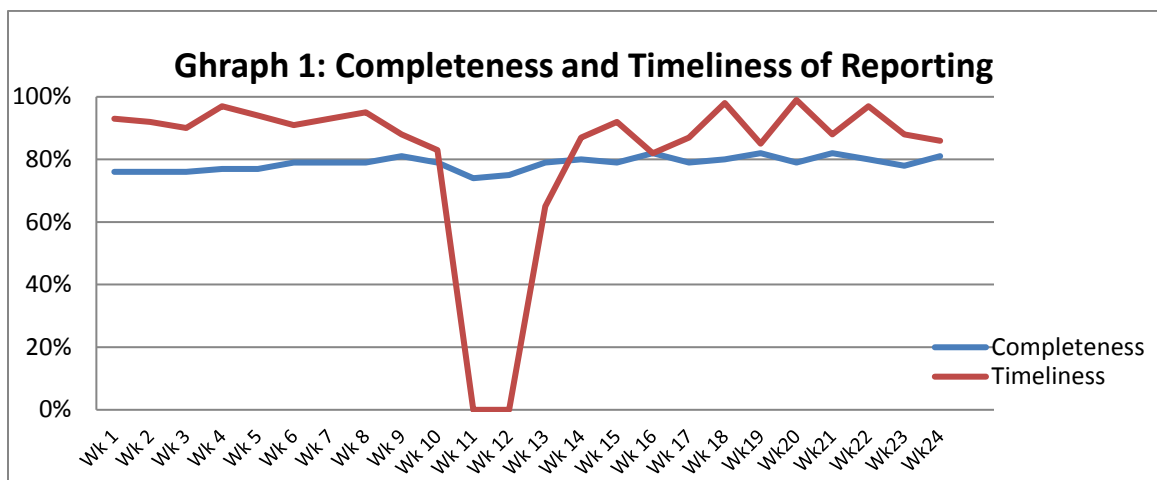


**Highlights:**

- ❖ 86 SM cases were detected mostly from the north east governorates.
- ❖ 4 AFP cases were reported from Aleppo, Hama, Rural Damascus and Homs.
- ❖ A significant decrease in bloody diarrhea cases in Dier Ezzor has been noticed in this week.

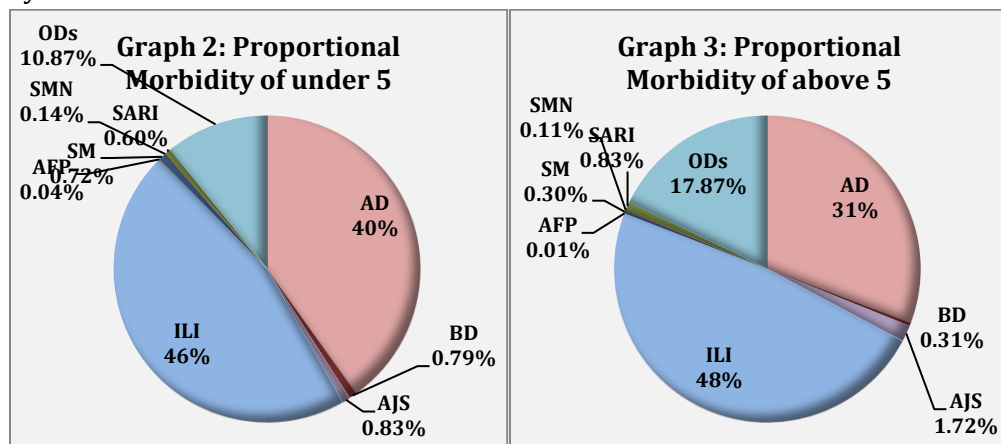
**Completeness & Timeliness of Reporting**

- ❖ The overall completeness of reporting was 78%; (969 out of total 1240 EWARS sentinel sites). 14 governorates have reported this week.
- ❖ Timeliness of reporting was 90%.

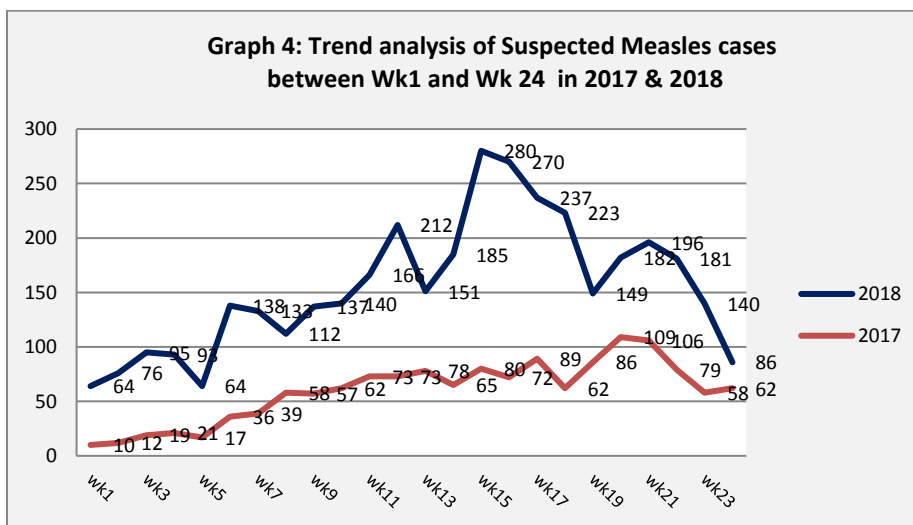


**The Morbidity Cases**

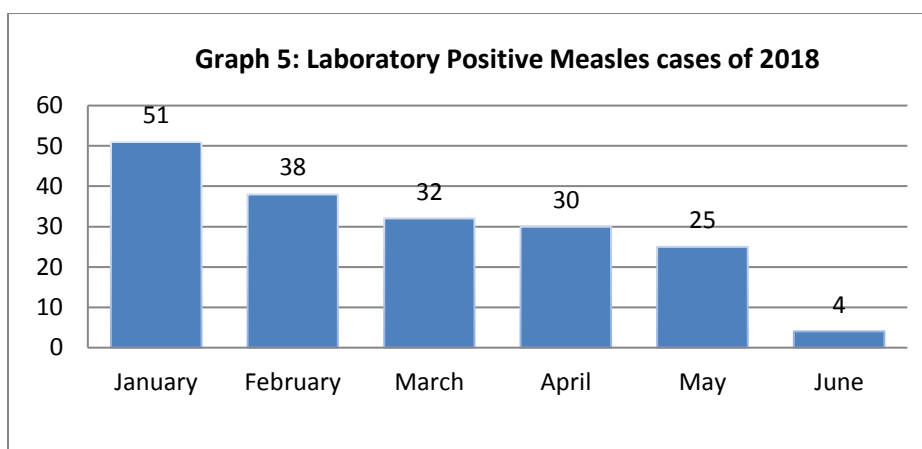
- ❖ Out of the 176.162 total consultations, a total of 18,238 EWARS notifiable cases were reported; of which 8,606 cases were Influenza like Illness (47%), 6,298 cases were Acute Diarrhoea (35%), 249 cases of AJS, 92 cases of Bloody Diarrhoea, 135 cases of Sever Acute Respiratory Infection, 86 cases of Suspected Measles, and 22 cases of Suspected Meningitis.
- ❖ **Graphs 2 and 3 below** show the proportional morbidity among < 5 and ≥ 5 year age groups respectively.



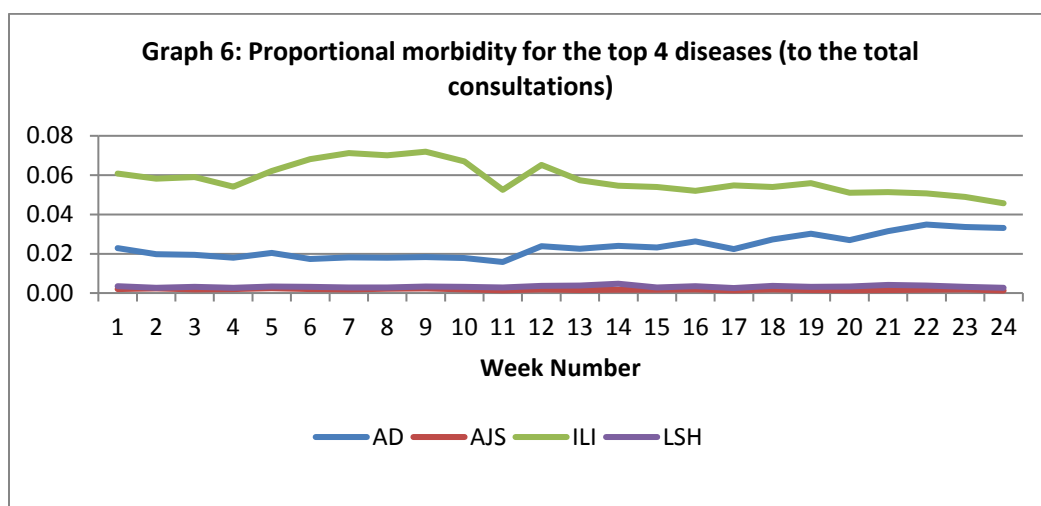
- ❖ 52% of the cases were distributed among males. 60% of the cases were distributed among  $\geq 5$  age group.
- ❖ AD constitutes (40%) among  $< 5$  and (31%) among  $\geq 5$ , while ILI constitutes (46%) of the cases among  $< 5$  and (48%) among  $\geq 5$
- ❖ In total 2,746 cases were reported as “other diseases”. The most important diseases reported within this group were; 263 cases of Leishmaniasis (mostly from Idlib, Aleppo, Dier Ezzor and Hama), 84 cases of Brucellosis, 43 cases of Typhoid, 6 cases of TB.
- ❖ **Graph 4:** shows the trend analysis of suspected Measles cases reported between week 1 and week 24 of 2017 and 2018. It shows decline in the trend of reported cases.



**Graph 5:** shows the number of laboratory confirmed Measles cases reported till 15 June 2018. It shows a decline in positive detected cases.



**Graph 6** shows the trend analysis of top four diseases to total consultations. It shows a slight increase in the trend of Acute Diarrhea cases in this week, this increase is synchronized with summer season.



❖ The table below shows comparison between reported cases in week-23 and week-24 2018.

**Table 1: Comparison between reported cases for week 23& week 24 in 2018.**

Disease	Week 23	Week 24
AD	7,262	6,298
BD	211	92
AWD	0	0
AJS	417	249
ILI	10,449	8,606
AFP	3	4
SM	140	86
SMN	39	22
SARI	202	135
TYF	132	93
PER	37	39
LSH	640	458
BRU	185	165
TB	17	7
SCA	437	311
LIC	493	304
CHP	640	439
MUM	23	16
Others	2047	914
<b>Total</b>	<b>23374</b>	<b>18238</b>

**Measles:**

The Ministry of Health in collaboration with WHO will conduct a Measles campaign in two rounds in the second half of 2018 as follows:

- Round1: 15-26 July 2018 for children 7-71 months
- Round2: 16-27 August 2018 school children 6 – 12 year old

The campaign will be conducted in 7 governorates: Hasakah, DZ, RQ, Aleppo, Hama, R. Damascus (East Ghota, Yelda, Beit Saham, Bebla) and Homs (North rural Homs and Tadmor).

**Bloody Diarrhea in Deir Ezzor:**

As of 9 June 2018, 551 cases, including 12 deaths, of Bloody diarrhea in Deir Ezzor Governorate have been reported since 10 March. The hospital, which has reported most of the cases, confirmed that 94% cases meet the EWARS case definition for acute bloody diarrhea. A Joint WHO UNICEF mission will take place from 18-23 June to increase outbreak control measures and investigate possibility for extending water chlorination program to other areas along the Euphrates valley.

**Table-2: Distribution of cases per age group, and by Governorate-week-24, 2018:**

Code	age group	Idleb	Hassaka	Raqqa	Sweida	Qunaitra	Lattakia	Aleppo	Hama	Homs	Daraa	Damascus	DierEzor	Rural Damascus	Tartous	Grand Total	
AD	< 5	78	184	113	165	61	285	557	186	171	117	325	241	395	65	2,943	6,298
	≥ 5	79	154	44	165	60	407	460	255	127	132	427	242	592	211	3,355	
BD	< 5	0	30	14	5	0	1	0	0	0	2	0	5	1	0	58	92
	≥ 5	0	21	6	5	0	0	0	0	0	1	1	0	0	0	34	
AWD	< 5	0	0	0	0	0	0	0	0	0	0	0	0	0	0	0	0
	≥ 5	0	0	0	0	0	0	0	0	0	0	0	0	0	0	0	
AJS	< 5	0	12	11	1	1	1	14	2	2	4	5	5	3	0	61	249
	≥ 5	0	29	1	1	0	10	40	38	10	10	24	5	15	5	188	
ILI	< 5	0	115	0	109	152	798	639	69	63	97	223	182	785	131	3,363	8,606
	≥ 5	0	155	0	130	481	771	851	109	95	255	490	194	1,095	617	5,243	
AFP	< 5	0	0	0	0	0	0	1	0	1	0	0	0	1	0	3	4
	≥ 5	0	0	0	0	0	0	0	1	0	0	0	0	0	0	1	
SM	< 5	0	23	21	0	0	3	1	3	0	0	2	0	0	0	53	86
	≥ 5	0	29	4	0	0	0	0	0	0	0	0	0	0	0	33	
SMN	< 5	0	0	0	1	0	1	1	2	0	0	4	0	0	1	10	22
	≥ 5	0	1	0	2	0	0	0	2	1	2	3	0	0	1	12	
SARI	< 5	0	4	11	0	0	1	1	17	1	0	8	0	0	1	44	135
	≥ 5	0	9	17	10	0	3	0	40	0	0	3	0	0	9	91	
Others	< 5	198	63	70	10	6	17	160	34	16	13	10	53	142	5	797	2,746
	≥ 5	94	107	51	7	21	42	294	166	38	28	38	322	734	7	1,949	
Total Sum of < 5		276	431	240	291	220	1,107	1,374	313	254	233	577	486	1,327	203	7,332	18,238
Total Sum of ≥ 5		173	505	123	320	562	1,233	1,645	611	271	428	986	763	2,436	850	10,906	
Total		449	936	363	611	782	2,340	3,019	924	525	661	1,563	1,249	3,763	1,053	18,238	