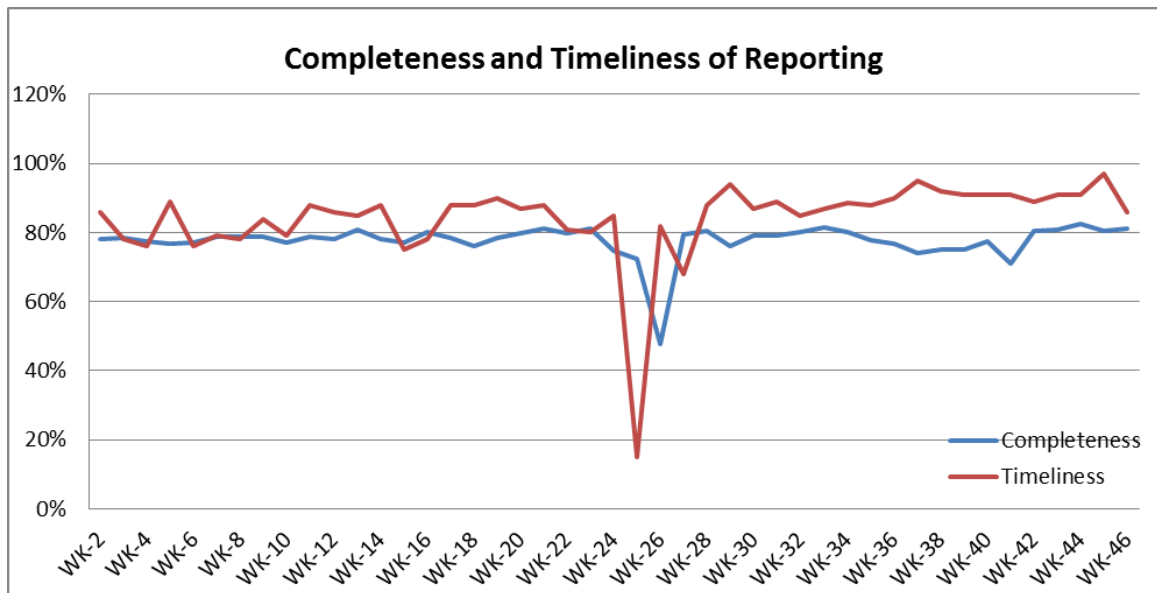


#### ❖ Highlights:

- ❖ During this week (5) AFP case was reported; 3 cases from Damascus one case from Al-Hassakeh and one case from Rural Damascus.
- ❖ (18) Suspected Measles cases were reported during this week; mostly from Ar-Raqqa 10 cases, and Aleppo 5 cases.

#### ❖ Completeness & Timeliness of Reporting

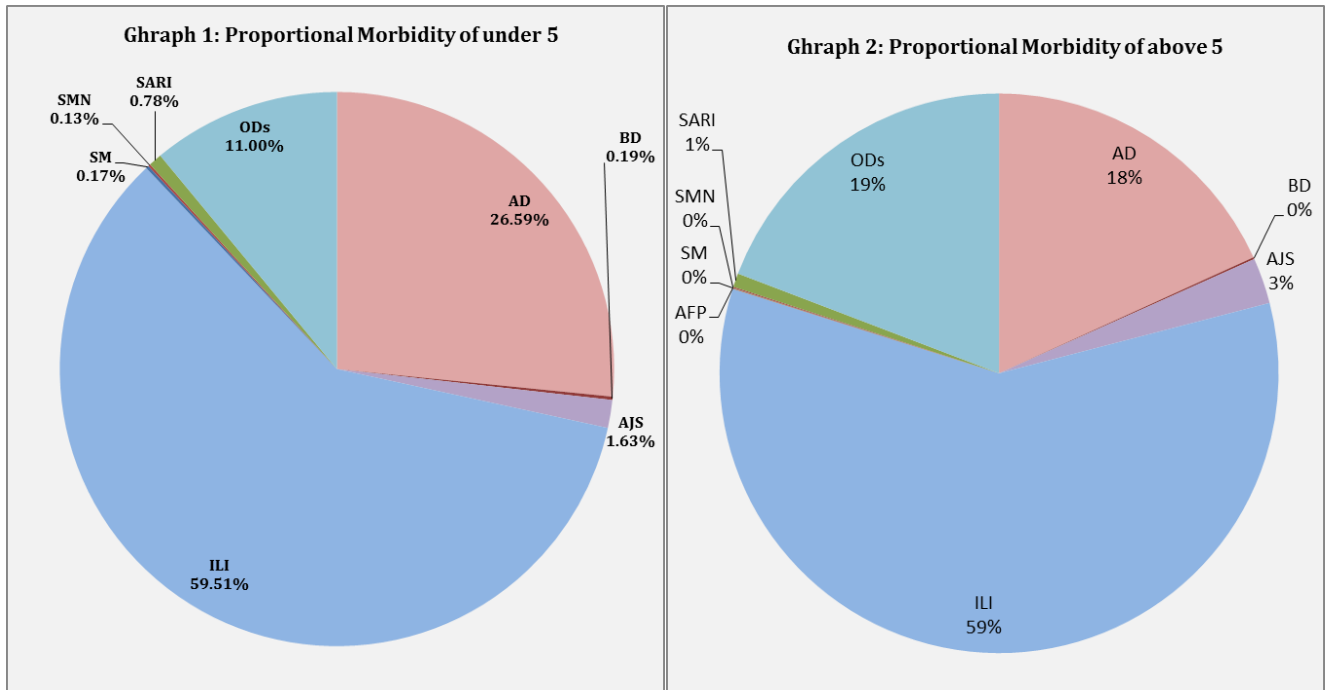
- ❖ The overall completeness of reporting was 81%; (931 out of total 1148 EWARS sentinel sites). (14) Governorates have reported this week. Timeliness of reporting was 87%.



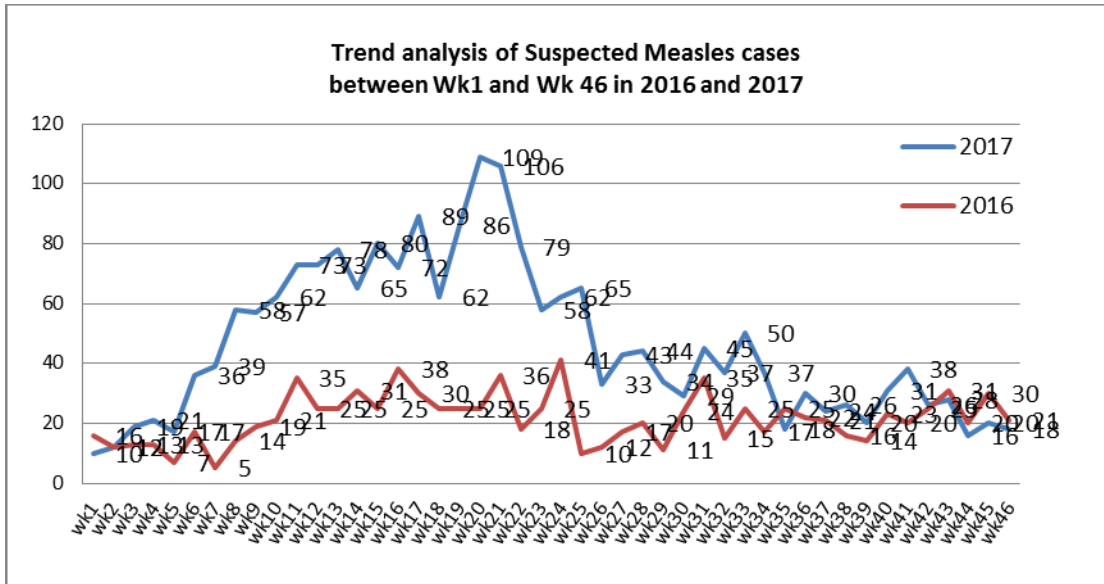
#### ❖ The Morbidity Cases

- ❖ Out of the 223,268 total consultations, a total of 21, 939 EWARS notifiable cases were reported; of which 4,771 cases were Acute Diarrhoea (22%), 12,982 cases were Influenza like Illness (59%), 586 cases of AJS, 173 cases of Sever Acute Respiratory Infection, 32 cases of Bloody Diarrhoea, 18 cases of Suspected Measles, 20 cases of Suspected Meningitis, and 4 cases of Acute Flaccid Paralysis.

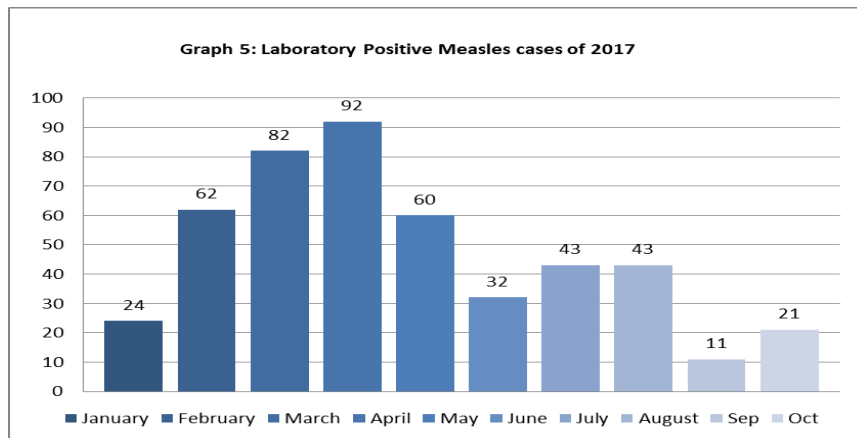
❖ Graphs 1 and 2 below show the proportional morbidity among < 5 and ≥ 5 year age groups respectively.



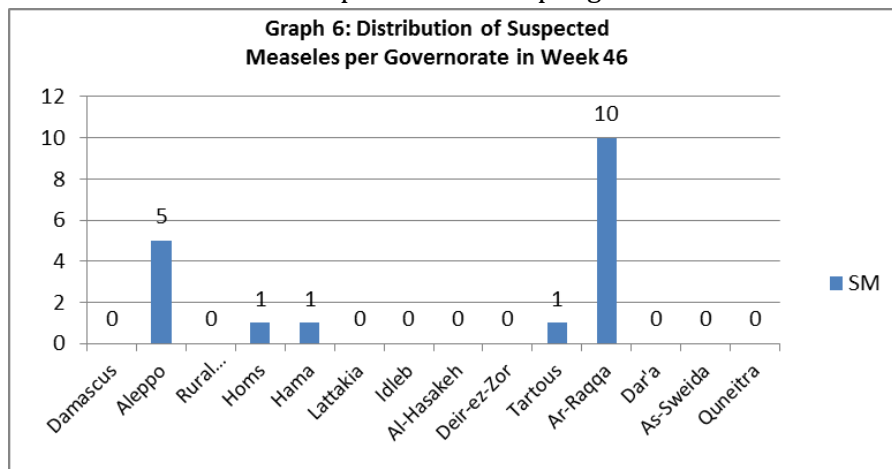
- ❖ AD constitutes (26.59%) among < 5 and (18%) among ≥ 5, while ILI constitutes (59.51%) of the cases among <5 and (59%) among ≥ 5.
- ❖ 48% of the cases were distributed among males. 58% of the cases were distributed among ≥5 age group.
- ❖ In total 3,452 cases were reported as “other diseases”. The most important diseases reported within this group were; 571 cases of Leishmaniasis, 116 cases of Typhoid, 95 cases of Brucellosis, 27 cases of Pertussis, 12 cases of Mumps, 1604 cases of lice, and 11 cases of TB.
- ❖ **Graph 4** shows the trend analysis of suspected Measles cases reported between week 1 and week 46 of 2016 and 2017.



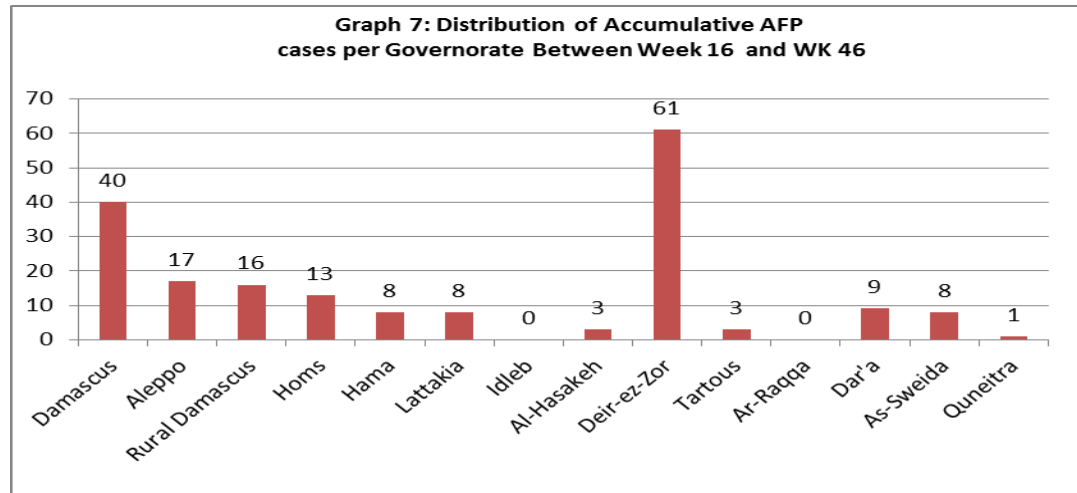
❖ **Graph 5** shows the number of laboratory confirmed Measles cases reported till Oct 2017. It shows that the peak of measles cases was in April.



❖ **Graph 6:** Shows the distribution of Suspected Measles per governorate in week 46.



❖ **Graph 7:** Shows the distribution of accumulative AFP cases between week 16 and week 46 of 2017. It shows that most AFP cases were reported from Deir-ez-Zor.



**Table 1** shows a comparison between all notifiable cases in week 45 & week 46 in 2017.

**Table 1: Comparison between reported cases for week 45 and week 46 in 2017.**

Disease	Week 45	Week 46
AD	4,674	4,771
BD	33	32
AWD	0	0
AJS	504	486
ILI	12,783	12,982
AFP	4	5
SM	20	18
SMN	22	20
SARI	83	173
TYF	94	116
PER	20	27
LSH	481	571
BRU	105	95
TB	13	11
SCA	232	349
LIC	565	553
CHP	819	1604
Others	83	114
Mum	13	12

**cVDPV2 outbreak response:**

Two immunization rounds have now been completed in Deir-ez-Zor (22 – 27 July & 22 – 28 August) and Raqqa (12 – 18 August & 7 – 13 October) governorates with more than 350,000 resident, refugee and internally displaced children have been reached with mOPV2 since the start of the outbreak. MoH by collaboration with WHO has strengthened surveillance for other governorates. WHO is supporting the establishment of environmental surveillance in country by end of 2017.

**Polio Campaign:**

More than 2.1 million children under five years old were vaccinated with bOPV in the National Immunization Days that took place between 8-12 October 2017. Sub national polio campaign is being conducted from 19 to 23 November 2017. The campaign targets HTRs and besieged areas in all governorates except Idleb.

**Table-2: Distribution of cases per age group, and by Governorate-week- 46, 2017:**

Code	Age Group	Idleb	Hassaka	Raqqa	Sweida	Qunaitra	Lattakia	Aleppo	Hama	Homs	Daraa	Damascus	DierEzor	Rural Damascus	Tartous	Grand Total
AD	< 5	177	166	321	57	62	180	325	194	112	118	378	69	221	87	2467
	≥ 5	140	67	103	64	74	316	368	112	102	73	406	70	244	165	2304
BD	< 5	0	1	6	1	0	2	1	0	0	5	1	1	0	0	18
	≥ 5	0	5	2	1	0	1	0	0	0	2	3	0	0	0	14
AWD	< 5	0	0	0	0	0	0	0	0	0	0	0	0	0	0	0
	≥ 5	0	0	0	0	0	0	0	0	0	0	0	0	0	0	0
AJS	< 5	4	1	40	2	0	0	54	12	6	6	12	6	8	0	151
	≥ 5	4	0	30	4	0	29	136	30	29	9	34	12	11	7	335
ILI	< 5	3	228	23	197	397	1311	794	259	231	211	493	339	594	441	5521
	≥ 5	2	140	15	322	830	1501	768	152	186	471	822	331	1047	874	7461
AFP	< 5	0	0	0	0	0	0	0	0	0	0	0	0	0	0	0
	≥ 5	0	1	0	0	0	0	0	0	0	0	3	0	1	0	5
SM	< 5	0	0	10	0	0	0	3	1	1	0	0	0	0	1	16
	≥ 5	0	0	0	0	0	0	2	0	0	0	0	0	0	0	2
SMN	< 5	0	0	7	1	0	0	0	4	0	0	0	0	0	0	12
	≥ 5	0	0	2	0	0	0	0	3	0	0	1	0	2	0	8
SARI	< 5	0	16	11	3	0	2	0	27	0	0	13	0	0	0	72
	≥ 5	0	7	15	5	0	10	0	28	1	0	35	0	0	0	101
Other	< 5	509	20	60	10	18	15	155	50	63	8	13	22	45	33	1021
	≥ 5	418	40	38	23	47	150	316	849	146	45	61	83	91	124	2431
<b>Total Sum of &lt; 5</b>		693	432	478	271	477	1510	1332	547	413	348	910	437	868	562	9278
<b>Total Sum of ≥ 5</b>		564	260	205	419	951	2007	1590	1174	464	600	1365	496	1396	1170	12661
<b>Total</b>		<b>1257</b>	<b>692</b>	<b>683</b>	<b>690</b>	<b>1428</b>	<b>3517</b>	<b>2922</b>	<b>1721</b>	<b>877</b>	<b>948</b>	<b>2275</b>	<b>933</b>	<b>2264</b>	<b>1732</b>	<b>21,939</b>