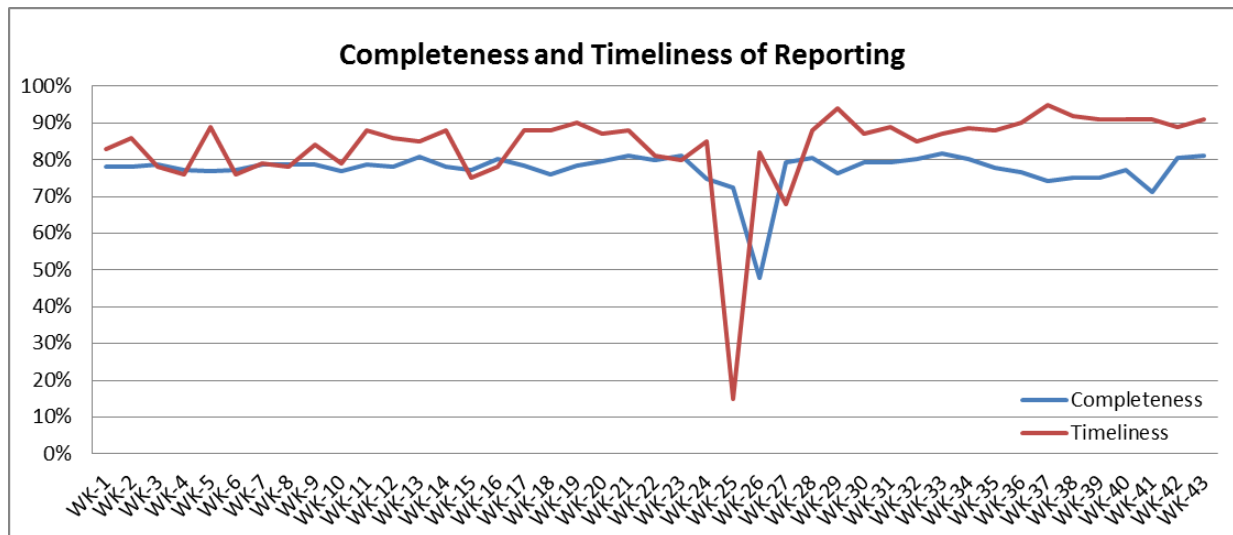


#### ❖ Highlights:

- ❖ During this week 4 AFP case was reported, 2 cases from Dar'a, one cases from Damascus and one case from Aleppo.
- ❖ 20 Suspected Measles cases were reported during this week; mostly from Lattakia 4 cases, Dar'a 4 cases, Deir-ez-Zor 4 cases.

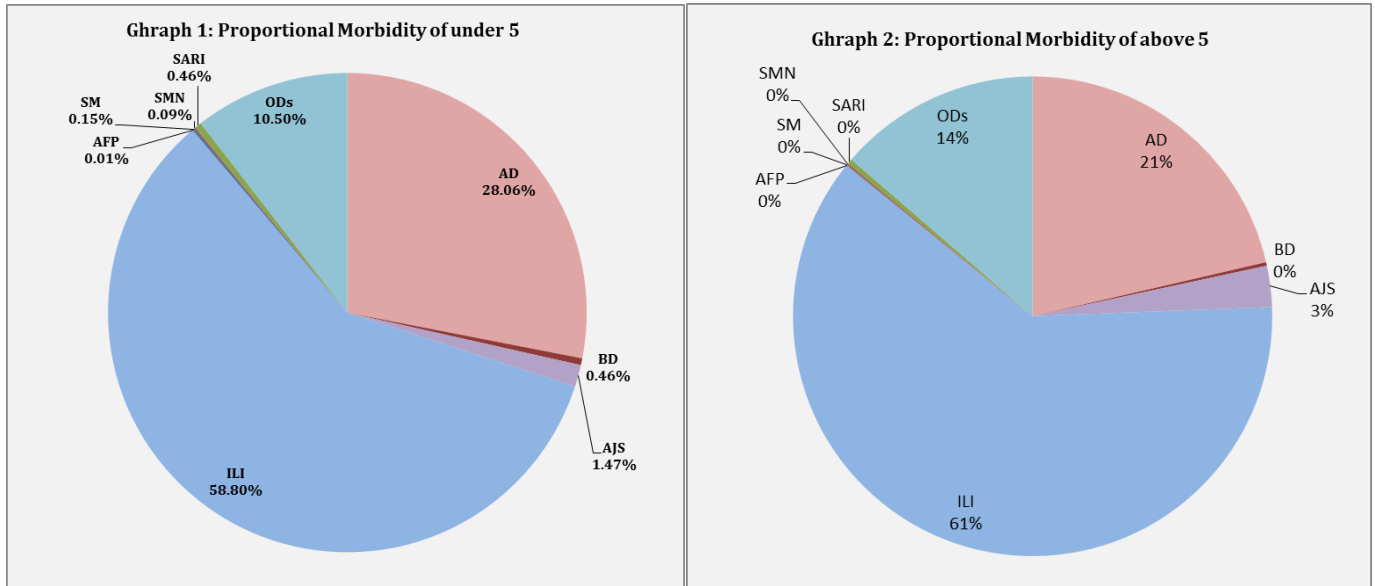
#### ❖ Completeness& Timeliness of Reporting

- ❖ The overall completeness of reporting was 81%; (932 out of total 1148 EWARS sentinel sites). (14) Governorates have reported this week. Timeliness of reporting was 91%.

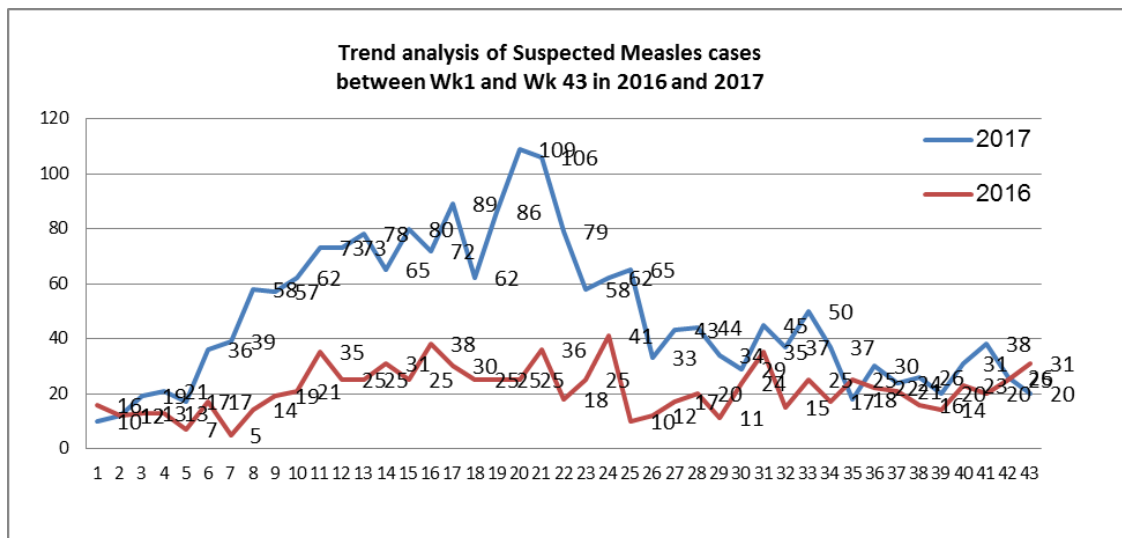


#### ❖ The Morbidity Cases

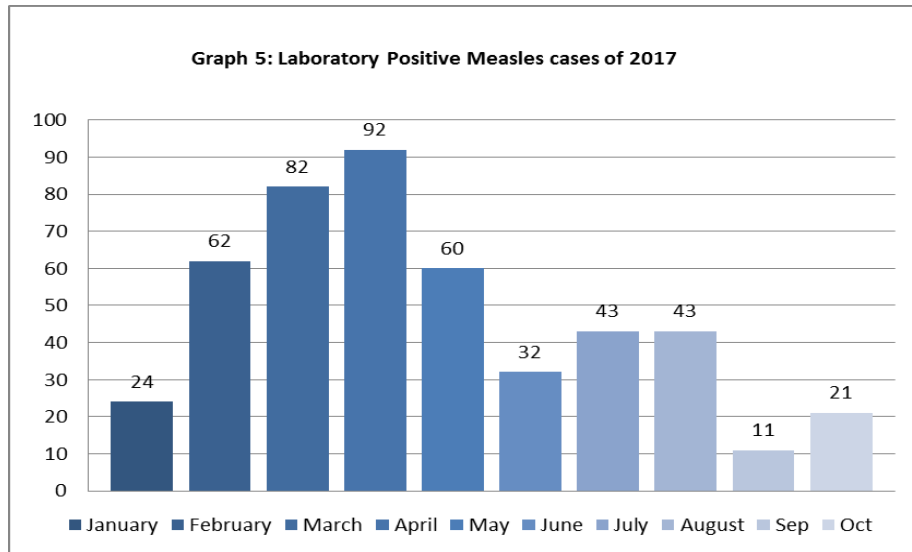
- ❖ Out of the 219,912 total consultations, a total of 21, 000 EWARS notifiable cases were reported; of which 5,097 cases were Acute Diarrhoea (27%), 12,662cases were Influenza like Illness (67%), 464cases of AJS, 84 cases of Sever Acute Respiratory Infection, 70 cases of Bloody Diarrhoea, 20 cases of Suspected Measles, 18 cases of Suspected Meningitis, and 4 cases of Acute Flaccid Paralysis.
- ❖ Graphs 1 and 2 below show the proportional morbidity among < 5 and ≥ 5 year age groups respectively.



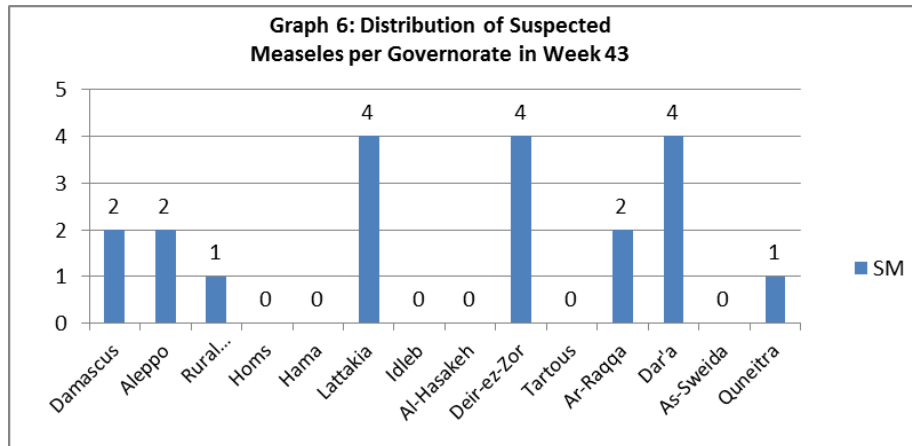
- ❖ AD constitutes (28.06%) among < 5 and (21%) among ≥ 5, while ILI constitutes (58.80%) of the cases among <5 and (61%) among ≥ 5.
- ❖ 51% of the cases were distributed among males. 57% of the cases were distributed among ≥5 age group.
- ❖ In total 2,581 cases were reported as “other diseases”. The most important diseases reported within this group were; 437 cases of Leishmaniasis, 128 cases of Typhoid, 106 cases of Brucellosis, 32 cases of Pertussis, 24 cases of Mumps, and 12 cases of TB.
- ❖ **Graph 4** shows the trend analysis of suspected Measles cases reported between week 1 and week 43 of 2016 and 2017.



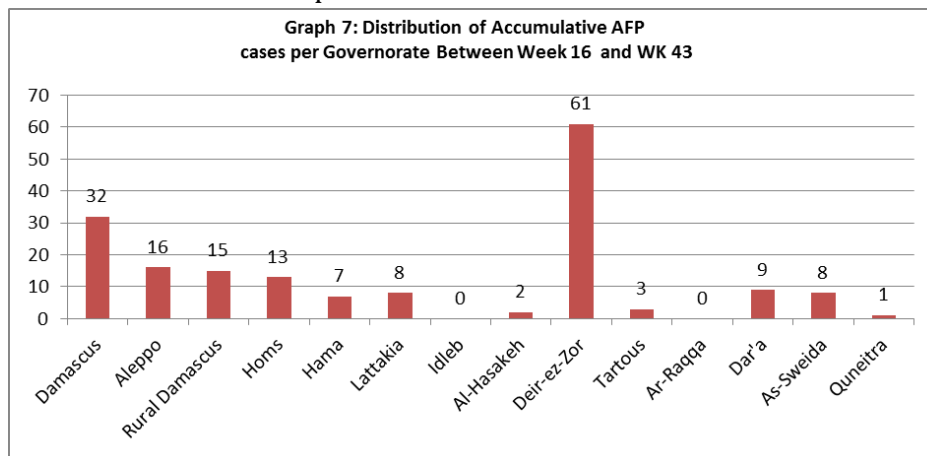
❖ **Graph 5** shows the number of laboratory confirmed Measles cases reported till Oct 2017. It shows that the peak of measles cases was in April.



❖ **Graph 6:** Shows the distribution of Suspected Measles per governorate in week 43.



❖ **Graph 7:** Shows the distribution of accumulative AFP cases between week 16 and week 43 of 2017. It shows that most AFP cases were reported from Deir-ez-Zor.



**Table 1** shows a comparison between all notifiable cases in week 42 & week 43 in 2017.

Disease	Week 42	Week 43
AD	5,355	5,097
BD	59	70
AWD	0	0
AJS	472	464
ILI	13,364	12,662
AFP	2	4
SM	26	20
SMN	21	18
SARI	114	84
TYF	139	128
PER	32	32
LSH	496	437
BRU	111	106
TB	13	12
SCA	249	192
LIC	543	491
CHP	951	1048
Others	149	111
Mum	14	24

## ❖ Disease surveillance & Response

### **cVDPV2 outbreak response:**

Two immunization rounds have now been completed in both Deir -ez-Zor and Raqqa governorates. Active case search and stool collection from healthy children arriving from Deir-ez-Zor is continuing.

### **Polio Campaign:**

Sub national polio campaign will be conducted during the period 19-23 November 2017. The campaign will target HTRs and besieged areas in all governorates except Idleb. During the national Polio campaign conducted from 8-12 October 2017, (2,136,759) children under 5 years old were vaccinated.

**Table-2: Distribution of cases per age group, and by Governorate-week- 43, 2017:**

Code	Age Group	Idleb	Hassaka	Raqqa	Sweida	Qunaitra	Lattakia	Aleppo	Hama	Homs	Daraa	Damascus	DierEzor	Rural Damascus	Tartous	Grand Total
AD	< 5	150	50	313	99	86	211	427	192	105	116	400	162	170	71	2552
	≥ 5	113	12	71	62	99	363	423	106	98	114	567	163	221	133	2545
BD	< 5	0	1	15	4	1	5	3	1	0	2	2	6	1	1	42
	≥ 5	0	2	4	4	2	4	4	1	2	1	4	0	0	0	28
AWD	< 5	0	0	0	0	0	0	0	0	0	0	0	0	0	0	0
	≥ 5	0	0	0	0	0	0	0	0	0	0	0	0	0	0	0
AJS	< 5	0	0	43	1	6	5	39	9	7	1	6	10	6	1	134
	≥ 5	0	0	42	2	9	21	87	47	27	15	38	19	19	4	330
ILI	< 5	2	63	0	208	363	1343	768	246	187	274	496	329	601	468	5348
	≥ 5	2	29	0	300	876	1501	873	103	222	420	670	337	1029	952	7314
AFP	< 5	0	0	0	0	0	0	1	0	0	0	0	0	0	0	1
	≥ 5	0	0	0	0	0	0	0	0	0	2	1	0	0	0	3
SM	< 5	0	0	2	0	1	4	1	0	0	3	2	0	1	0	14
	≥ 5	0	0	0	0	0	0	1	0	0	1	0	4	0	0	6
SMN	< 5	0	0	3	0	0	2	0	2	0	0	1	0	0	0	8
	≥ 5	0	0	3	0	0	1	0	3	0	0	3	0	0	0	10
SARI	< 5	0	0	9	3	0	2	1	19	0	0	8	0	0	0	42
	≥ 5	0	0	7	11	0	7	0	10	0	0	7	0	0	0	42
Other	< 5	412	2	47	5	63	8	174	17	52	23	13	52	29	58	955
	≥ 5	271	5	43	9	56	95	333	126	245	68	55	107	116	97	1626
Total Sum of < 5		564	116	432	320	520	1580	1414	486	351	419	928	559	808	599	9096
Total Sum of ≥ 5		386	48	170	388	1042	1992	1721	396	594	621	1345	630	1385	1186	11904