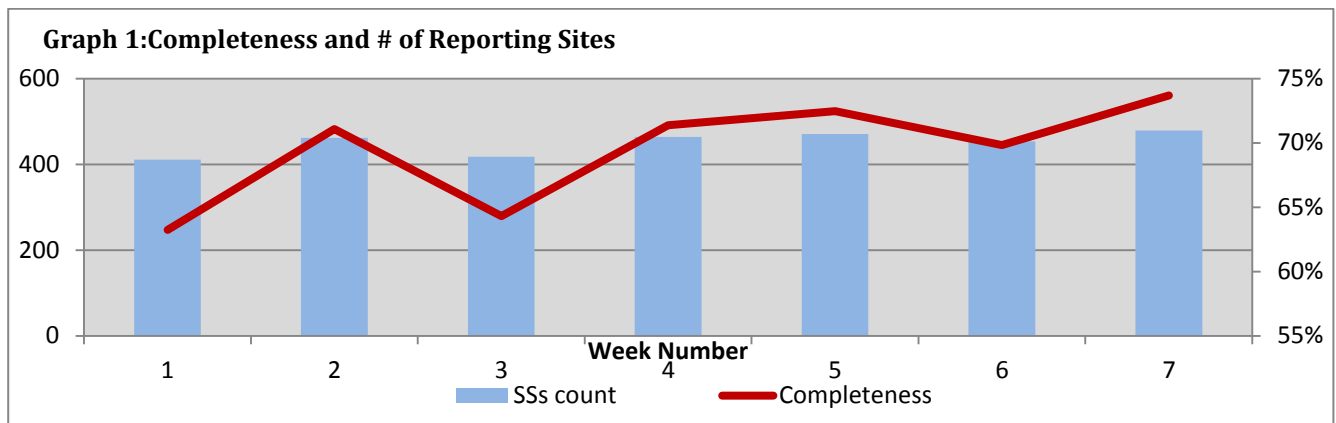


Highlights:

- ❖ 7 AWD cases were detected in Lattakia (5) and in AlHasakeh (2).
- ❖ 1 AFP case was detected in Hassaka.
- ❖ A notable increase in number of AJS cases was noticed this week
- ❖ A notable decrease in number of SARI cases was also noticed this week.

❖ Completeness & Timeliness of Reporting

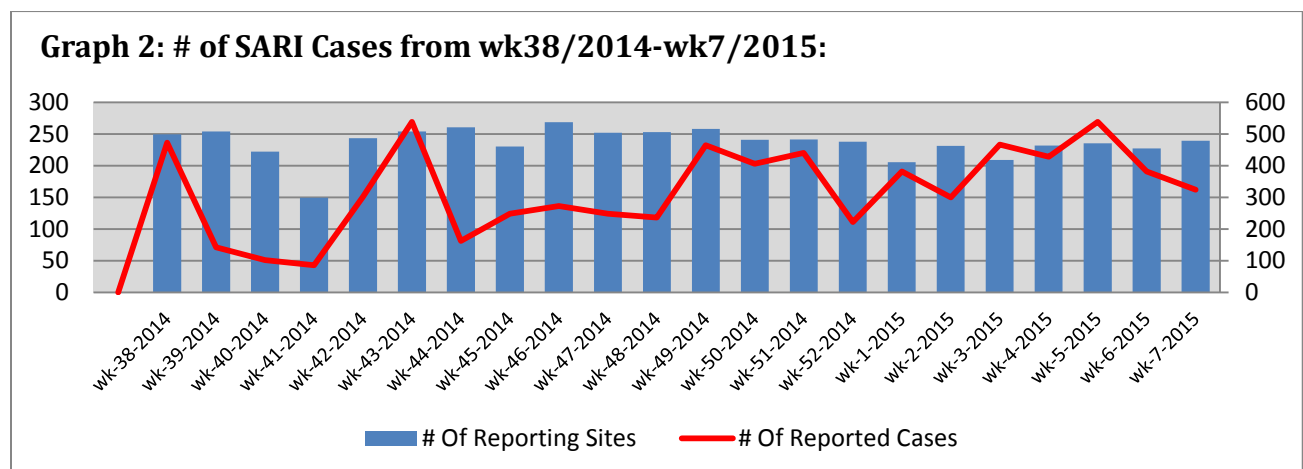
- ❖ The overall completeness of reporting was 74%; (479 out of total 650 EWARS sentinel sites). (See Graph 1). 14 governorates have reported this week.



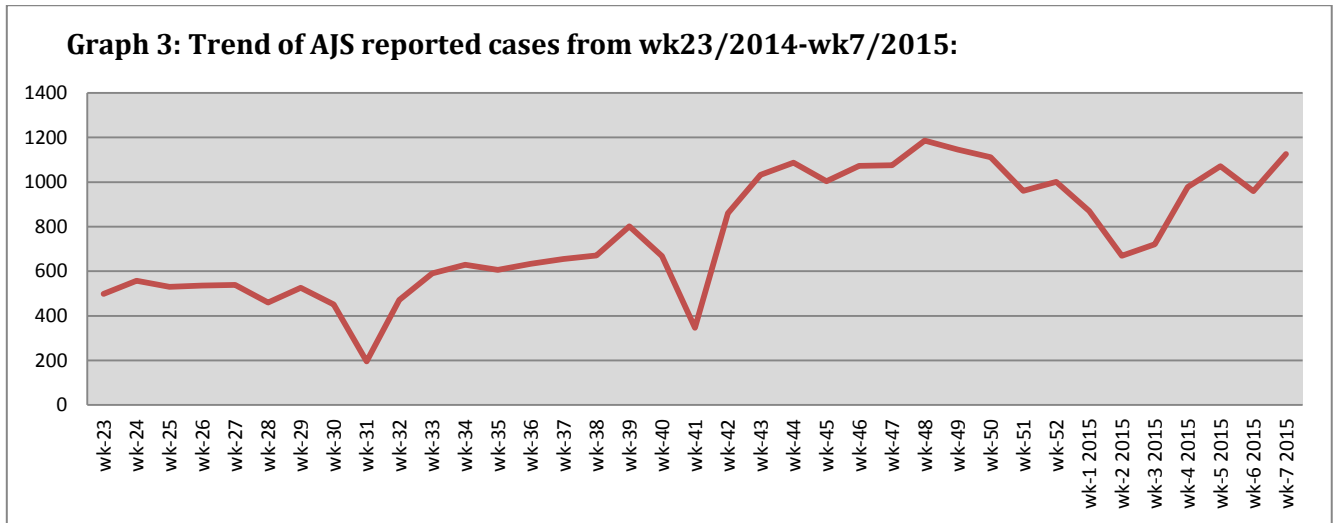
- ❖ Timeliness of reporting is 76%.

❖ The Morbidity Cases

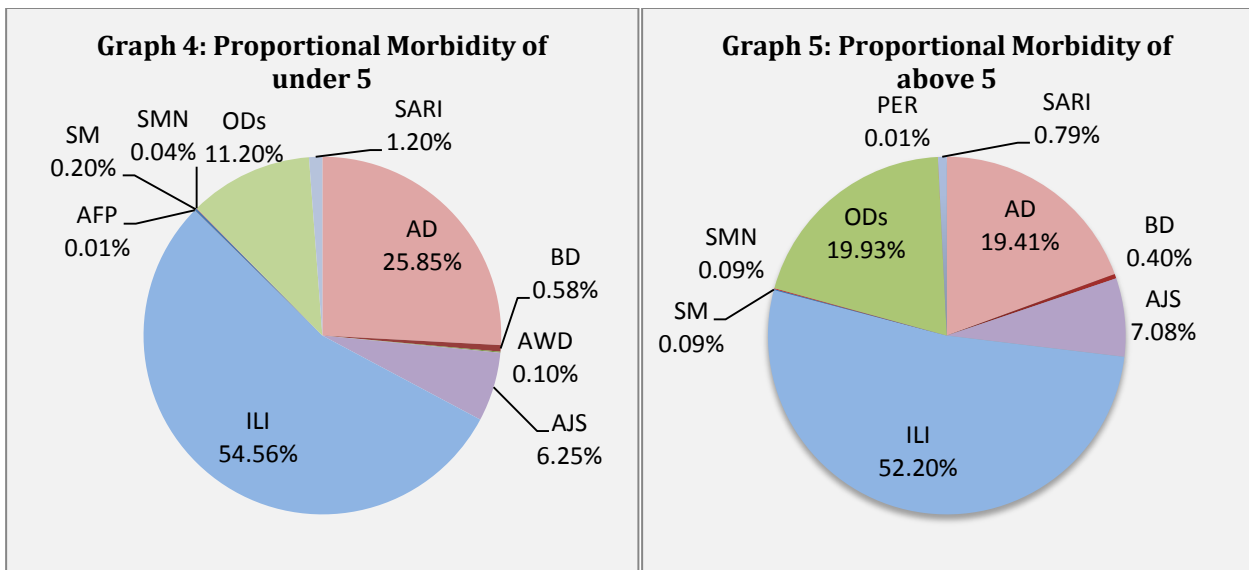
- ❖ Out of the 139,661 total consultations, a total of 16,758 cases were reported; of which 8,922 cases were Influenza like Illness (53%), 3,727 cases were Acute Diarrhoea (22%), 1,126 cases of AJS, 162 cases of Sever Acute Respiratory Infection, 81 cases of Bloody Diarrhoea, 23 cases of Suspected Measles, 11 cases of Meningitis, 7 cases of AWD, and 1 AFP case.
- ❖ Below chart reflects the trend in the number of SARI cases in 2014 and 2015 in the period between week 38 - 2014 and week 7-2015.



- ❖ Graph 3 displays the trend of the (28,305) AJS cases between wk23/2014-wk7/2015. The distribution of the cases per governorates shows that Idleb, Damascus, and DierEzor have the highest number of cases for this week. An increase in the number of cases was noticed for this week.



- ❖ In total, 2,698 cases were reported as “other diseases”. The most important diseases reported within this group were: 639 cases of Leishmaniasis (most of which were reported from Idleb 28%, Hamah 27%, and Rural Damascus 18%), 170 cases of Typhoid (most of which were reported from Rural Damascus 33%, Daraa 22%, and DierEzor 22%), 73 cases of Brucellosis (most of which were reported from DierEzor 30% and Rural Damascus 23%), 15 cases of TB and 13 cases of Pertussis.
- ❖ 56% of the cases were distributed among ≥ 5 age group.
- ❖ ILI consists (54.56%) of the cases among <5 and (52.20%) among ≥ 5 , while AD cases consists (25.85%) among <5 and (19.41%) among ≥ 5 .
- ❖ Graphs 4 and 5 below show the proportional morbidity among < 5 and ≥ 5 year age groups respectively.



51% of cases were distributed among males.

❖ **The Response**

AWD: The cases detected in Lattakia were not clustered and cured rapidly. No samples were collected from those cases. No stool samples were collected from the detected cases in AlHasakeh and they were managed properly

AFP: Stool samples were collected from the AFP case and sent to the reference lab in Damascus. A national vaccination campaign will be implemented between 15th and 19th February.

AJS and water and food borne diseases: The Syrian Minister of health opened a ceremony of launching a health promotion campaign regarding food & water –borne diseases at Zohaire Hobby district health centre / Damascus Directorate and is carried out in all governorates throughout the country, including a daily educational sessions in all primary health centres, PHC, schools, and IDPs shelters concerning these diseases, focusing on the importance of both personal and hand hygiene. Moreover, educational posters and brochures were distributed among the audience. While awareness campaign about food and water borne diseases continues through media (TV programmes, radio programmes, newspapers ...). The RRTs in all governorates continue conducting field visits to the IDPs shelters and schools to evaluate the health and environmental situation, and raise the awareness about food and water borne diseases.

Table-1: Distribution of cases per age group, and by Governorate-week-7, 2015:

Code	age group	Idleb	Hassaka	Raqua	Sweida	Qunaitra	Lattakia	Aleppo	Hamah	Homs	Daraa	Damascus	DierEzor	Rural Damascus	Tartous	Grand Total
AD	< 5	242	50	55	76	40	156	94	81	51	119	315	335	265	23	1902
	≥ 5	307	43	27	81	52	87	69	64	51	91	374	317	222	40	1825
BD	< 5	0	9	0	5	1	5	0	0	0	6	0	16	1	0	43
	≥ 5	0	5	0	2	5	2	0	0	0	3	11	9	1	0	38
AWD	< 5	0	2	0	0	0	5	0	0	0	0	0	0	0	0	7
	≥ 5	0	0	0	0	0	0	0	0	0	0	0	0	0	0	0
AJS	< 5	238	4	22	3	6	19	5	20	27	6	36	59	15	0	460
	≥ 5	265	2	7	12	1	36	29	64	19	3	94	69	63	2	666
ILI	< 5	463	69	16	263	1	312	515	194	18	209	470	758	343	383	4014
	≥ 5	748	80	24	411	13	354	438	196	22	192	624	754	449	603	4908
AFP	< 5	0	1	0	0	0	0	0	0	0	0	0	0	0	0	1
	≥ 5	0	0	0	0	0	0	0	0	0	0	0	0	0	0	0
SM	< 5	1	0	7	0	0	3	0	0	0	0	1	3	0	0	15
	≥ 5	0	0	2	0	0	0	0	0	0	0	1	5	0	0	8
SMN	< 5	0	0	0	0	0	0	0	0	0	0	3	0	0	0	3
	≥ 5	0	0	0	0	0	0	0	0	0	0	8	0	0	0	8
SARI	< 5	4	1	0	7	0	0	0	39	0	0	32	5	0	0	88
	≥ 5	6	1	0	7	0	0	0	12	0	0	46	2	0	0	74
Others	< 5	96	35	6	1	56	8	254	48	0	25	27	77	190	1	824
	≥ 5	311	23	9	16	57	58	359	243	14	66	127	104	464	23	1874
Total Sum of < 5		1044	171	106	355	104	508	868	382	96	365	884	1253	814	407	7357
Total Sum of ≥ 5		1637	154	69	529	128	537	895	579	106	355	1285	1260	1199	668	9401
Total		2681	325	175	884	232	1045	1763	961	202	720	2169	2513	2013	1075	16758