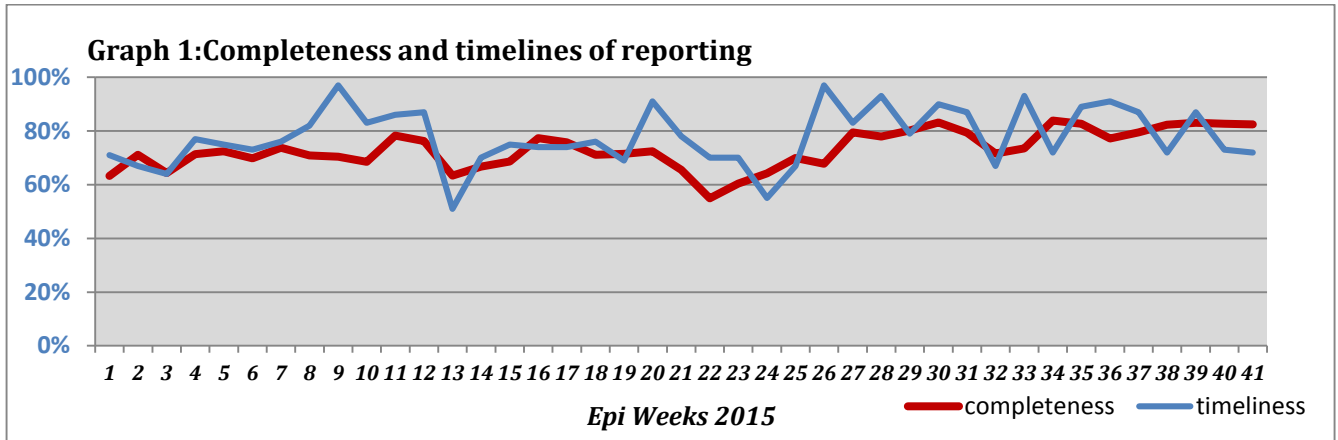


Highlights:

- ❖ 1 AFP case was detected in Sweida.

❖ Completeness & Timeliness of Reporting

- ❖ The overall completeness of reporting was 82%; (809 out of total 981 EWARS sentinel sites). (See Graph 1). 14 governorates have reported this week.

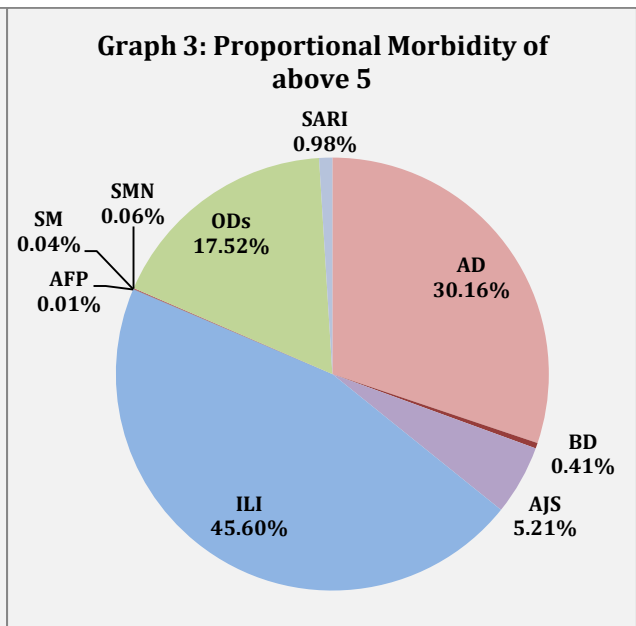
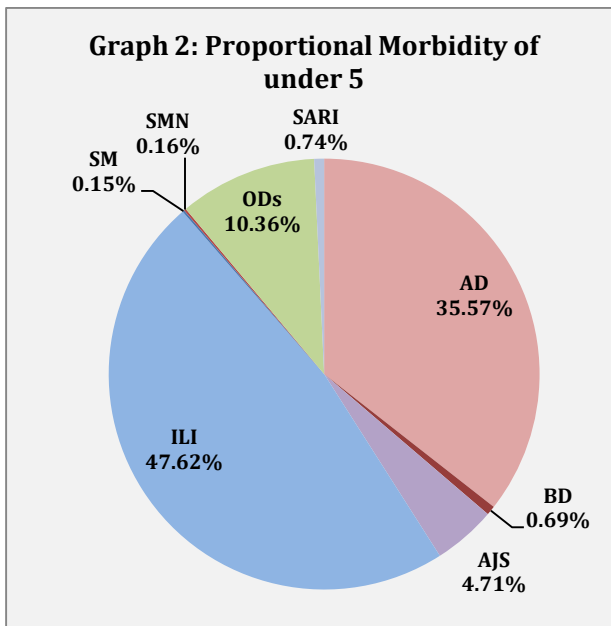


- ❖ Timeliness of reporting is 72%.

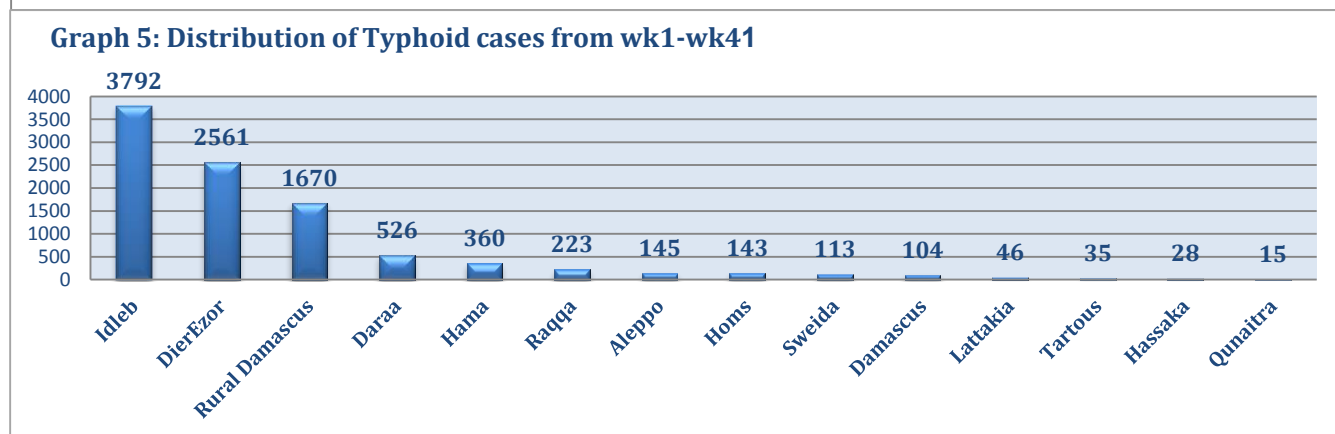
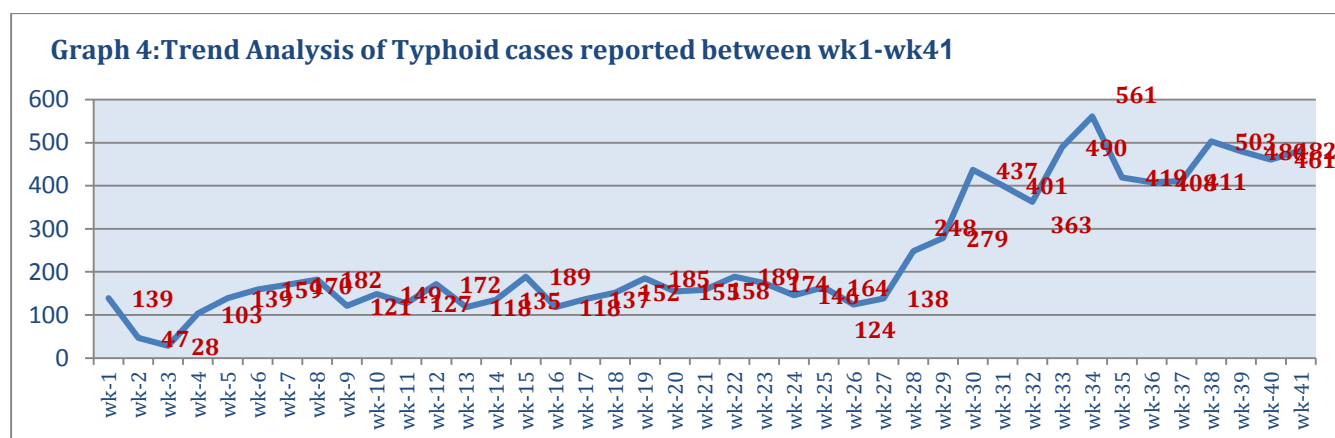
❖ The Morbidity Cases

- ❖ Out of the 171,742 total consultations, a total of 20,551 EWARS notifiable cases were reported; of which 9,512 cases were Influenza like Illness (46%), 6,681 cases were Acute Diarrhoea (33%), 1017 cases of AJS, 178 cases of Sever Acute Respiratory Infection, 111 cases of Bloody Diarrhoea, 22 cases of Suspected Meningitis, 18 cases of Suspected Measles, and 1 AFP case.

- ❖ Graphs 2 and 3 below show the proportional morbidity among < 5 and ≥ 5 year age groups respectively.

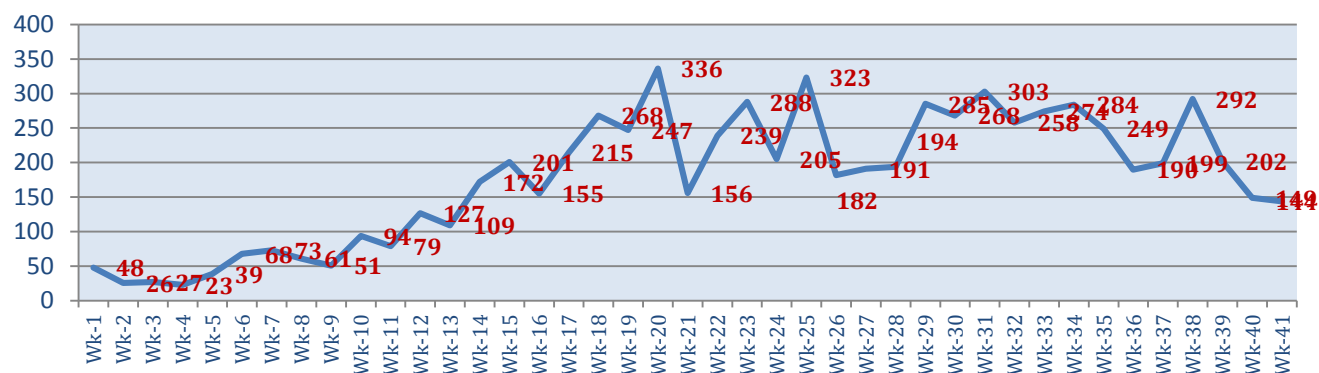


- ❖ AD constitutes (35.57%) among < 5 and (30.16%) among ≥ 5, while IL constitutes (47.62%) of the cases among <5 and (45.6%) among ≥ 5.
- ❖ 52% of cases were distributed among males. 53% of the cases were distributed among ≥5 age group.
- ❖ In total 3,011 cases were reported as “other diseases”. The most important diseases reported within this group were; 482 cases of Typhoid (most of which were reported from Idleb 61%, Daraa 12%, and DierEzor 12%), 409 cases of Leishmaniasis (most of which were reported from Idleb 68%, Hamah 13%, and Rural Damascus 10%), 144 cases of Brucellosis (most of which were reported from Rural Damascus 19%, Daraa 19% and Idleb 17%), 49 cases of Pertussis, and 21 cases of TB.
- ❖ Graph 4 and 5 below show the trend analysis of Typhoid cases reported from all governorates and the distribution of cases per governorates respectively. It shows that the accumulative number of cases is higher in Idleb, DierEzor and Rural Damascus.

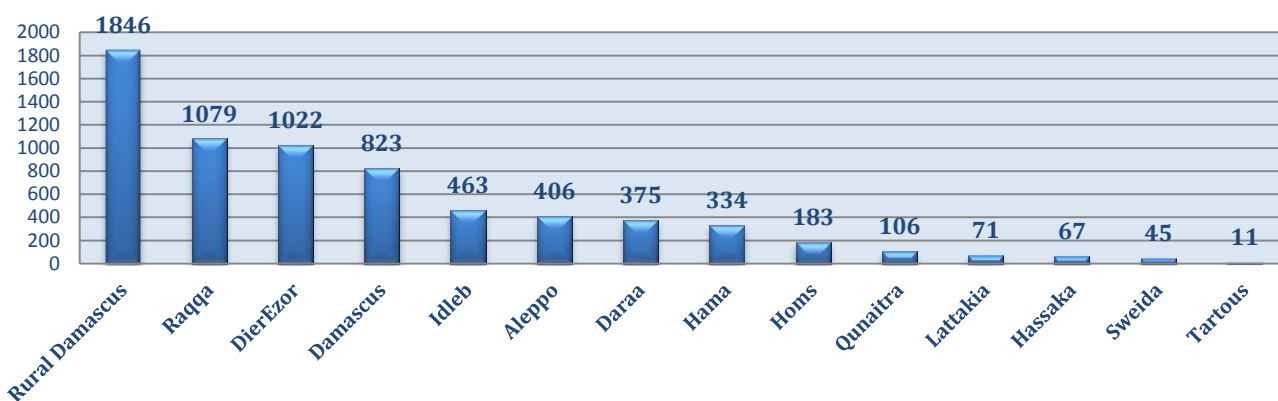


- ❖ Graph 6 and 7 below show the trend analysis of Brucellosis cases reported from all governorates and the distribution of cases per governorates respectively. It shows that a decrease in the number of reported Brucellosis cases has been noticed since the week 39. And the accumulative number of cases is higher in Rural Damascus, DierEzor and Raqqa while the highest number of cases reported for this week was from Rural Damascus, Daraa, and Idleb.

Graph 6: Trend analysis of Brucellosis Cases between WK1-WK41



Graph 7: Distribution of Brucellosis Cases between WK1-WK41 per governorate



❖ The Response

Acute flaccid paralysis: Stool sample were collected from the AFP case and sent to the reference lab in Damascus. The next round of Polio national vaccination campaign will be implemented between 18 and 22 of October. The annualized rate is 3 up to this week.

Bloody Diarrhoea: Cases are not clustered; No samples were collected and cases were managed properly.

Measles: Blood samples have been collected from some cases and sent to the reference lab in Damascus. No samples were taken from the cases reported from inaccessible areas and cases were managed properly.

Meningitis: Cases were managed according to the national protocol; and investigation forms were filled for some cases but not all; it shows that most of the cases are viral meningitis not bacterial. Preventive therapy was provided as necessary for contacts of the probable bacterial meningitis.

Typhoid: Rural Damascus Health Directorate in collaboration with UNICEF distributed 5 million chlorine tablets in Rural Damascus in the most affected areas with water borne diseases (yalda, Babila, Bet Sahem and Yarmouk camp).

Table-1: Distribution of cases per age group, and by Governorate-week-41, 2015:

Table-1: Distribution Code	age group	Idleb	Hassaka	Raqqa	Sweida	Qunaitra	Lattakia	Aleppo	Hama	Homs	Daraa	Damascus	DierEzor	Rural Damascus	Tartous	Grand Total	
AD	< 5	453	180	196	69	82	554	410	176	61	125	371	353	300	69	3399	6681
	≥ 5	354	111	57	130	103	384	498	150	43	127	625	328	237	135	3282	
BD	< 5	0	20	1	5	3	4	0	0	0	6	6	19	2	0	66	111
	≥ 5	0	11	1	7	9	3	0	0	0	1	4	8	0	1	45	
AWD	< 5	0	0	0	0	0	0	0	0	0	0	0	0	0	0	0	0
	≥ 5	0	0	0	0	0	0	0	0	0	0	0	0	0	0	0	
AJS	< 5	239	1	35	7	8	7	68	5	13	21	11	24	10	1	450	1017
	≥ 5	164	0	12	24	13	41	97	39	5	49	76	17	22	8	567	
ILI	< 5	549	103	0	254	97	1202	587	188	15	172	368	375	315	325	4550	9512
	≥ 5	425	109	0	367	117	1118	401	177	23	188	637	379	459	562	4962	
AFP	< 5	0	0	0	0	0	0	0	0	0	0	0	0	0	0	0	1
	≥ 5	0	0	0	1	0	0	0	0	0	0	0	0	0	0	1	
SM	< 5	0	0	4	0	0	2	0	1	1	0	4	2	0	0	14	18
	≥ 5	0	0	0	0	0	0	0	0	0	0	0	3	1	0	4	
SMN	< 5	0	0	7	0	0	2	0	5	0	0	0	0	1	0	15	22
	≥ 5	0	0	2	1	0	0	0	3	0	0	1	0	0	0	7	
SARI	< 5	39	9	0	0	0	0	0	14	0	0	7	2	0	0	71	178
	≥ 5	23	17	0	5	0	0	0	12	0	0	50	0	0	0	107	
Others	< 5	492	1	4	2	65	27	302	29	0	64	40	32	72	3	1133	3011
	≥ 5	533	7	6	22	87	90	402	141	26	92	139	100	219	14	1878	
Total Sum of < 5		1772	314	247	337	255	1798	1367	418	90	388	807	807	700	398	9698	20551
Total Sum of ≥ 5		1499	255	78	557	329	1636	1398	522	97	457	1532	835	938	720	10853	
Total		3271	569	325	894	584	3434	2765	940	187	845	2339	1642	1638	1118	20551	

