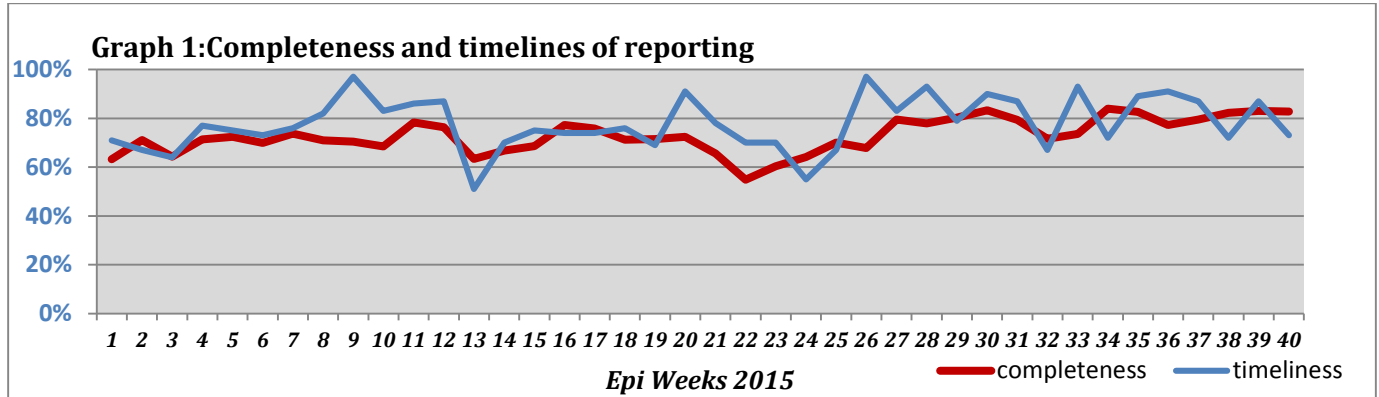


Highlights:

- ❖ 3AFP cases were detected in Damascus (2) and Aleppo (1).
- ❖ A slight increase in proportional morbidity of AJS cases to total consultations has been noticed this week.

❖ Completeness& Timeliness of Reporting

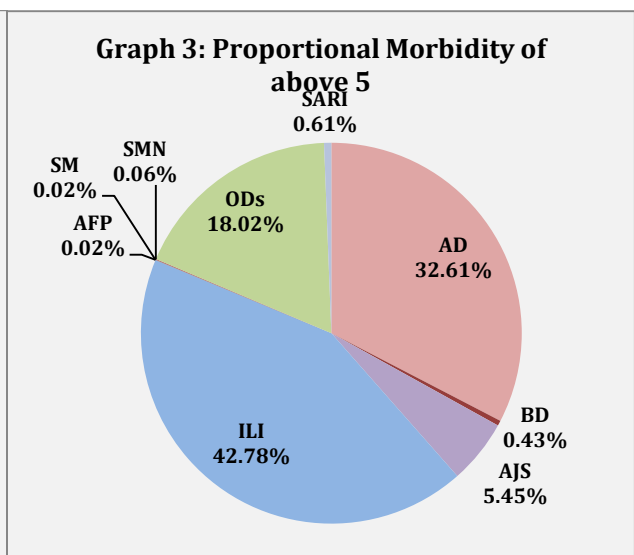
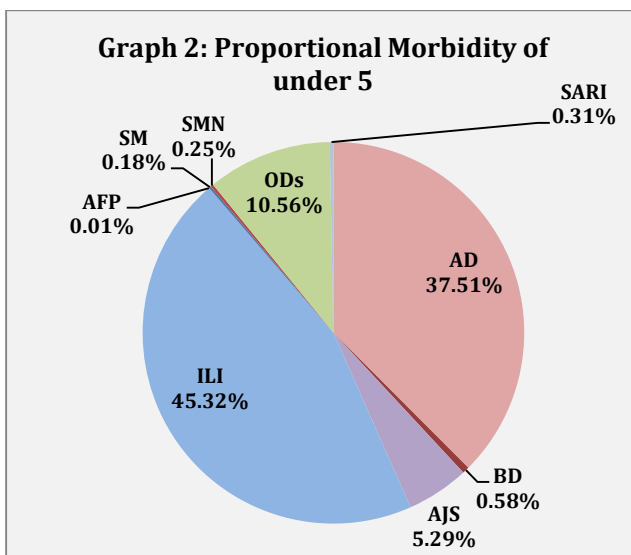
- ❖ The overall completeness of reporting is 83%; (808 out of total 977 EWARS sentinel sites). (See Graph 1). 14 governorates have reported this week.



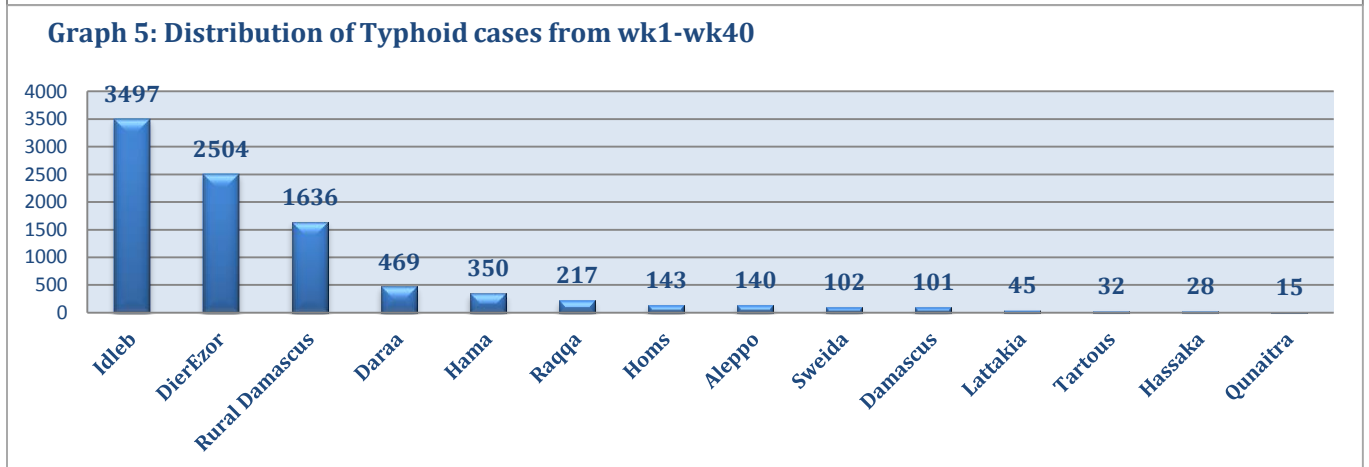
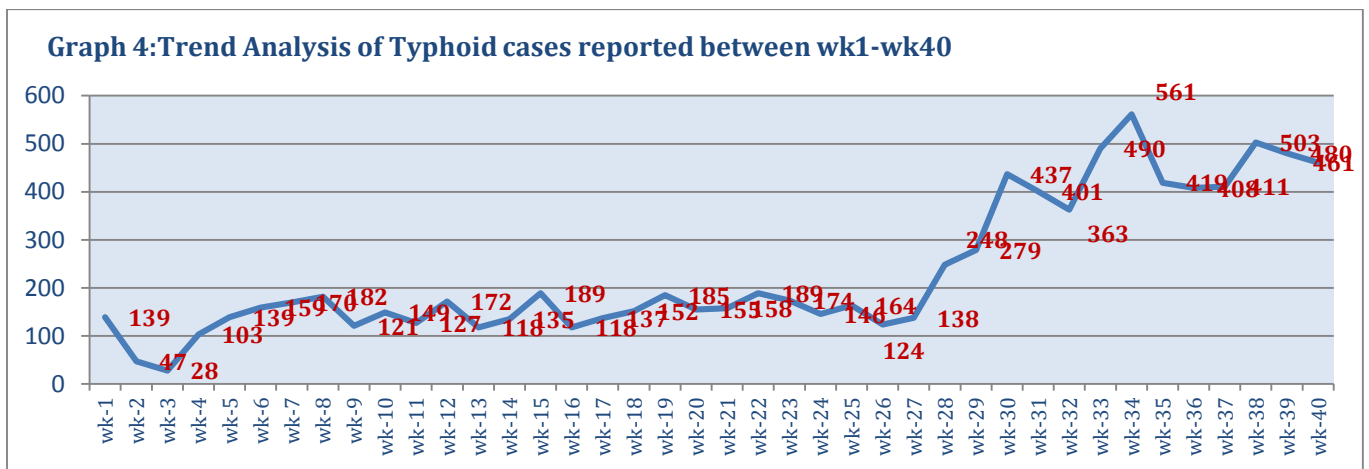
- ❖ Timeliness of reporting is 73%.

❖ The Morbidity Cases

- ❖ Out of the 163,435 total consultations, a total of 19,945 EWARS notifiable cases were reported; of which 8,776 cases were Influenza like Illness (44%), 6,968 cases were Acute Diarrhoea (35%), 1072 cases of AJS, 100 cases of Bloody Diarrhoea, 94 cases of Sever Acute Respiratory Infection, 29 cases of Suspected Meningitis, 19 cases of Suspected Measles, and 3 AFP cases.
- ❖ Graphs 2 and 3 below show the proportional morbidity among < 5 and ≥ 5 year age groups respectively.

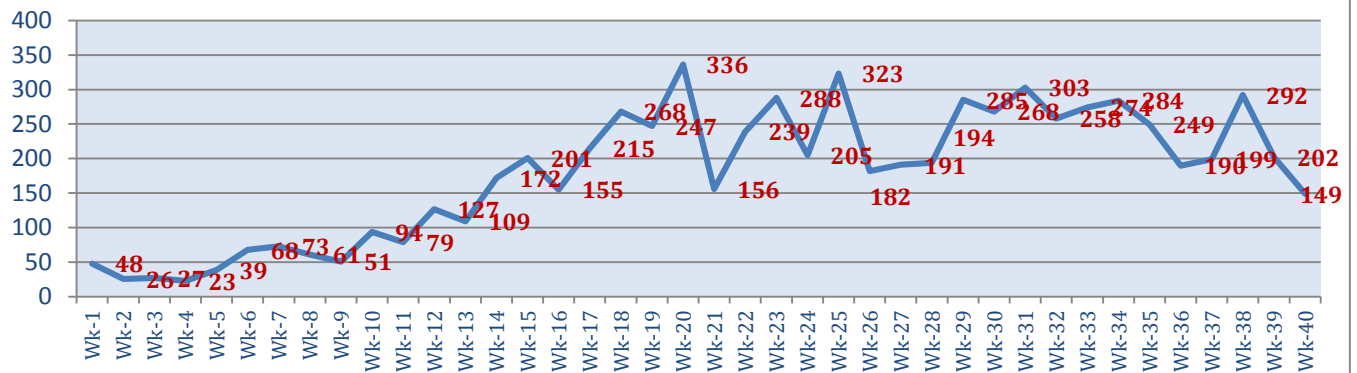


- ❖ AD constitutes (37.51%) among < 5 and (32.6%) among ≥ 5, while ILI constitutes (45.32%) of the cases among <5 and (42.78%) among ≥ 5.
- ❖ 51% of cases were distributed among males. 52% of the cases were distributed among ≥5 age group.
- ❖ In total 2,884 cases were reported as “other diseases”. The most important diseases reported within this group were; 461 cases of Typhoid (most of which were reported from Idleb 58%, Daraa18%, and DierEzor 10%), 368cases of Leishmaniasis (most of which were reported from Idleb 74%, Hamah 11%, and Rural Damascus and Aleppo 8%), 149 cases of Brucellosis (most of which were reported from Idleb 22%, Daraa 21%, and Damascus 12%), 63 cases of Pertussis, and13 cases of TB.
- ❖ Graph 4 and 5 below show the trend analysis of Typhoid cases reported from all governorates and the distribution of cases per governorates respectively. It shows that the accumulative number of cases is higher in Idleb, DierEzor and Rural Damascus.

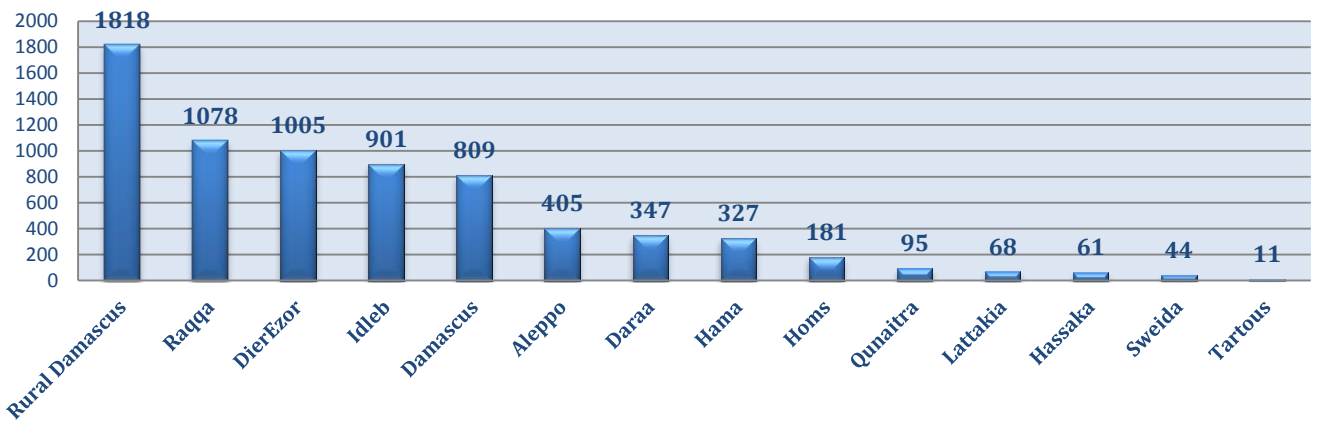


- ❖ Graph 6 and 7 below show the trend analysis of Brucellosis cases reported from all governorates and the distribution of cases per governorates respectively. It shows that the accumulative number of cases is higher in Rural Damascus, Raqqa and DierEzor while the highest number of cases reported for this week were from Idleb, Daraa, and Damascus. However, the trend analysis shows a decrease for this week.

Graph 6: Trend analysis of Brucellosis Cases between WK1-WK40



Graph 7: Distribution of Brucellosis Cases between WK1-WK40 per governorate



❖ The Response

Acute flaccid paralysis: Stool samples were collected from the AFP cases and sent to the reference lab in Damascus. The next round of Polio national vaccination campaign will be implemented between 18 and 22 of October. The annualized rate is 3 up to this week.

Bloody Diarrhoea: Cases are not clustered, no samples were collected and cases were managed properly.

Measles: Blood samples have been collected from most cases and sent to the reference lab in Damascus. The cases were managed properly.

Meningitis: Cases were managed according to the national protocol; and investigation forms were filled for some cases but not all; it shows that most of the cases are viral meningitis not bacterial. Preventive therapy was provided as necessary for contacts of the probable bacterial meningitis.

Typhoid: Trainings on case management of Typhoid and other water and food borne diseases were conducted by ministry of health for the health workers in nine governorates.

Table-1: Distribution of cases per age group, and by Governorate-week-40, 2015:

Code	age group	Idleb	Hassaka	Raqqa	Sweida	Qunaitra	Lattakia	Aleppo	Hama	Homs	Daraa	Damascus	DierEzor	Rural Damascus	Tartous	Grand Total
AD	< 5	375	180	212	107	58	518	351	230	76	230	417	375	315	74	3518
	≥ 5	339	44	54	171	94	469	515	112	65	187	672	311	258	159	3450
BD	< 5	0	11	0	7	1	8	0	1	0	2	9	9	6	0	54
	≥ 5	0	4	0	4	7	2	0	0	0	7	10	5	7	0	46
AWD	< 5	0	0	0	0	0	0	0	0	0	0	0	0	0	0	0
	≥ 5	0	0	0	0	0	0	0	0	0	0	0	0	0	0	0
AJS	< 5	243	5	35	3	4	10	82	5	10	34	27	24	9	5	496
	≥ 5	176	3	10	20	5	22	107	38	12	77	69	5	31	1	576
ILI	< 5	476	138	0	221	62	1313	526	114	12	154	312	383	261	279	4251
	≥ 5	361	38	0	345	153	1126	354	212	14	176	436	361	322	627	4525
AFP	< 5	0	0	0	0	0	0	1	0	0	0	0	0	0	0	1
	≥ 5	0	0	0	0	0	0	0	0	0	0	2	0	0	0	2
SM	< 5	0	0	5	1	0	2	0	0	0	0	3	1	5	0	17
	≥ 5	0	0	0	0	0	0	0	0	0	0	0	2	0	0	2
SMN	< 5	0	0	8	1	0	1	1	8	0	0	4	0	0	0	23
	≥ 5	0	0	2	0	0	0	0	2	0	0	1	0	0	1	6
SARI	< 5	4	0	0	3	0	0	0	13	0	0	5	4	0	0	29
	≥ 5	6	0	0	6	0	0	0	9	0	0	43	1	0	0	65
Others	< 5	529	1	11	3	45	20	326	23	11	53	16	42	64	7	1151
	≥ 5	436	6	7	15	62	162	435	100	28	114	110	83	147	28	1733
Total Sum of < 5		1627	335	271	346	170	1872	1287	394	109	473	793	838	660	365	9540
Total Sum of ≥ 5		1318	95	73	561	321	1781	1411	473	119	561	1343	768	765	816	10405
Total		2945	430	344	907	491	3653	2698	867	228	1034	2136	1606	1425	1181	19945

