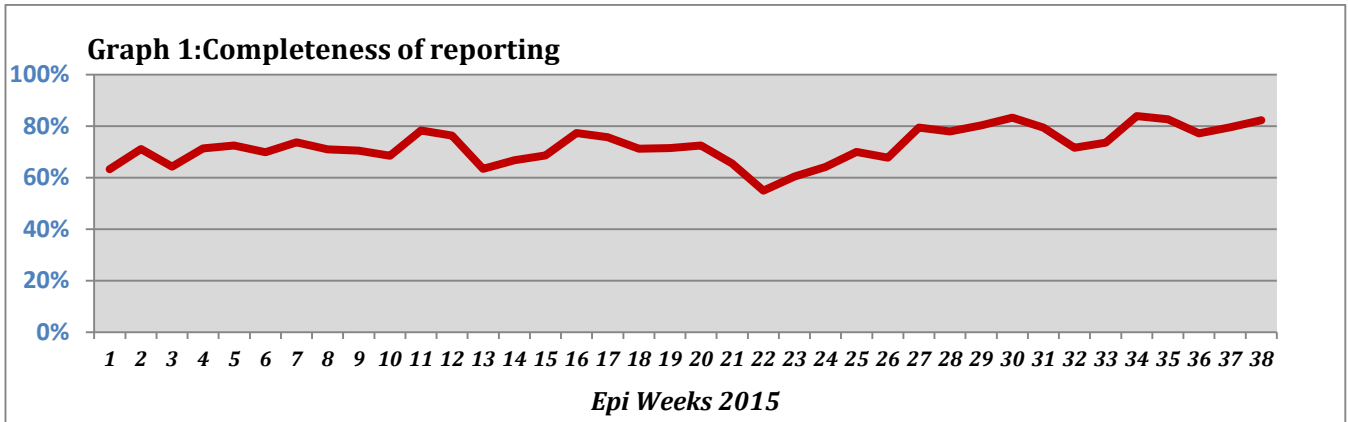


Highlights:

- ❖ 1 AWD case was detected in Rural Damascus

❖ Completeness& Timeliness of Reporting

- ❖ The overall completeness of reporting was 82%; (803 out of total 976 EWARS sentinel sites). (See Graph 1). 14 governorates have reported this week.

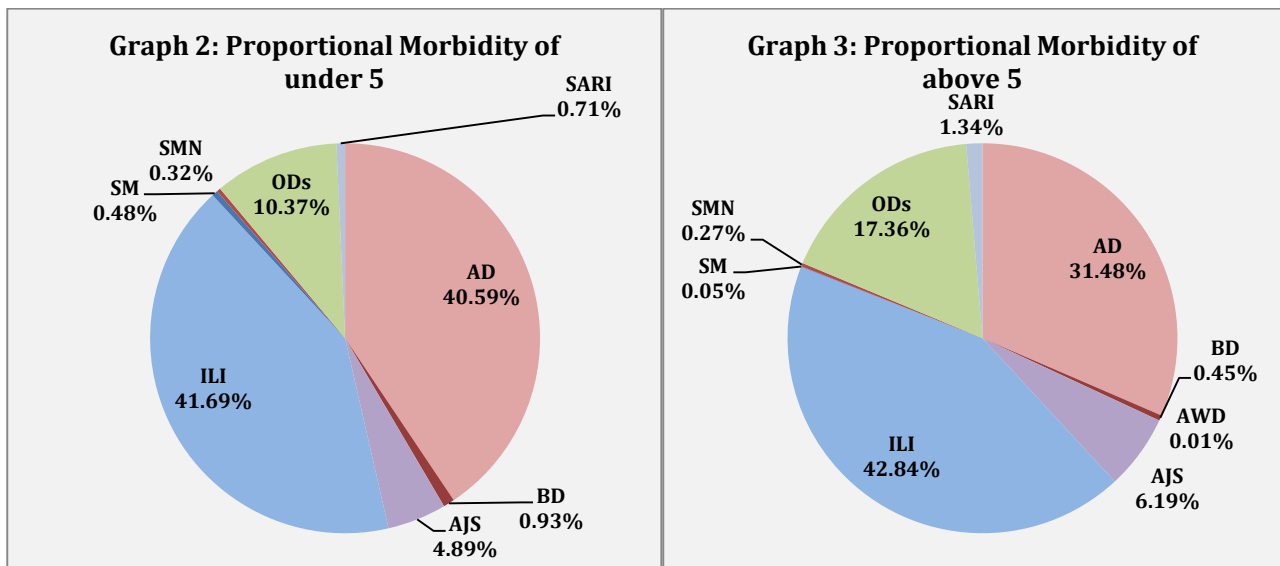


- ❖ Timeliness of reporting is 72%.

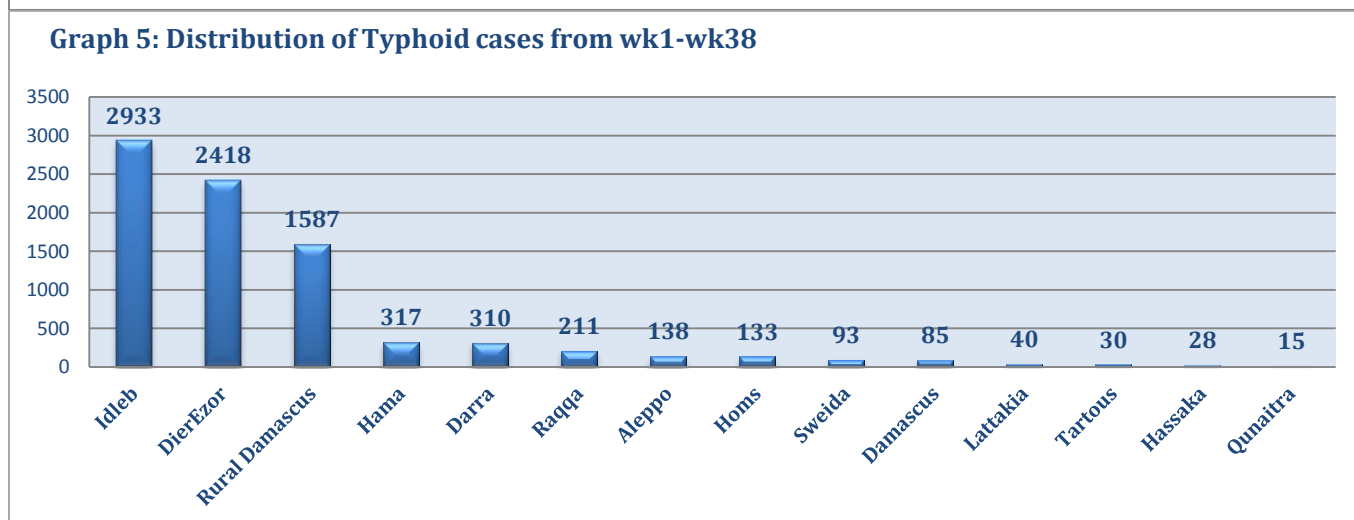
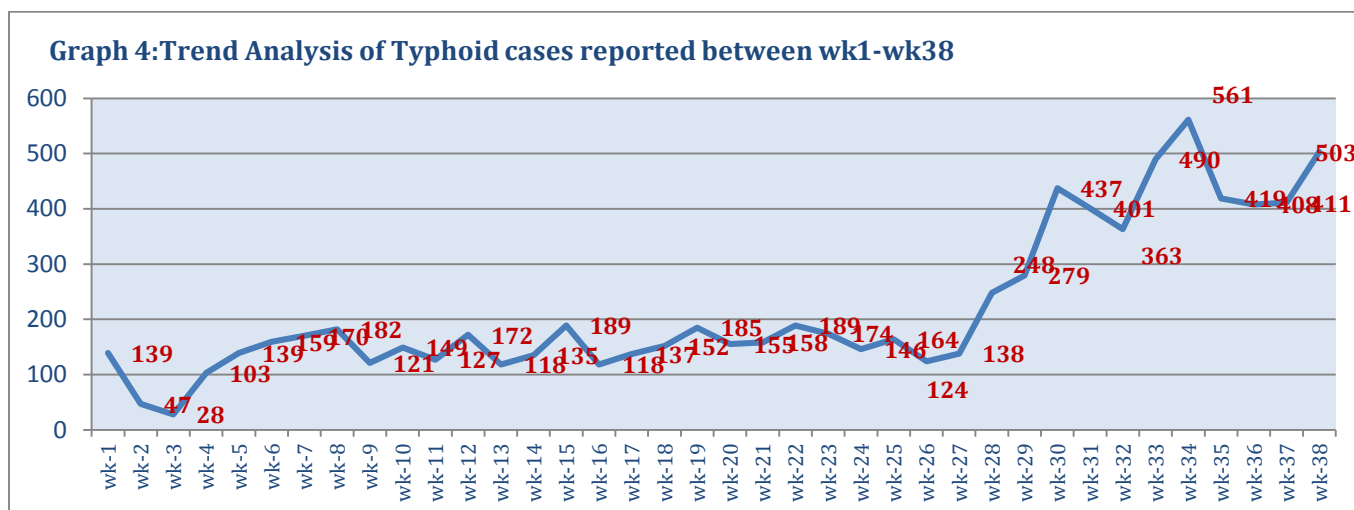
❖ The Morbidity Cases

- ❖ Out of the 197,412 total consultations, a total of 20,828 EWARS notifiable cases were reported; of which 8,682 cases were Influenza like Illness (42%), 7,331 cases were Acute Diarrhoea (36%), 1147 cases of AJS, 215 cases of Sever Acute Respiratory Infection, 138 cases of Bloody Diarrhoea, 61 cases of Suspected Meningitis, 52 cases of Suspected Measles, and 1 AWD case.

- ❖ Graphs 2 and 3 below show the proportional morbidity among < 5 and ≥ 5 year age groups respectively.

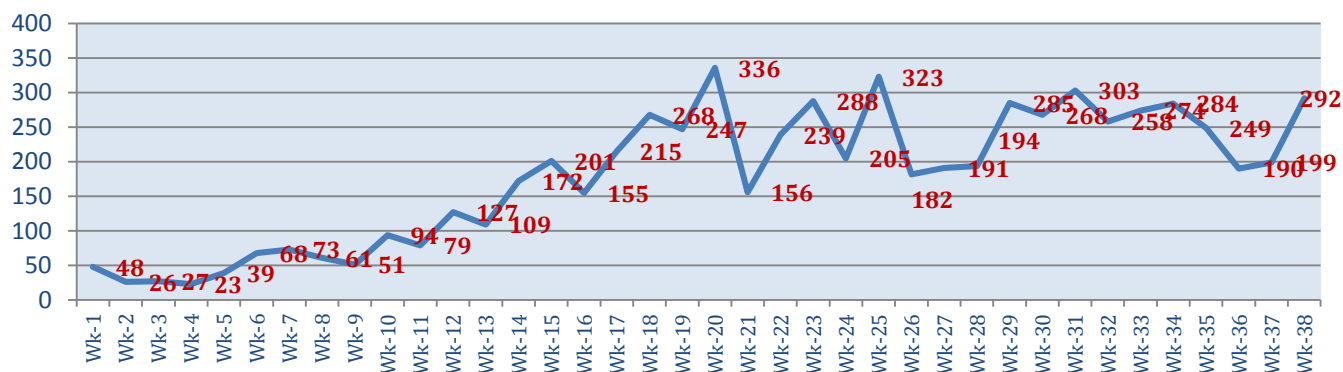


- ❖ AD constitutes (40.59%) among < 5 and (31.48%) among ≥ 5, while ILI constitutes (41.69%) of the cases among <5 and (42.84%) among ≥ 5.
- ❖ 51% of cases were distributed among males. 53% of the cases were distributed among ≥5 age group.
- ❖ In total 3,201 cases were reported as “other diseases”. The most important diseases reported within this group were; 503 cases of Typhoid (most of which were reported from Idleb 51%, Rural Damascus 24%, and DierEzor 11%), 382 cases of Leishmaniasis (most of which were reported from Idleb 53%, Hamah 23%, and Aleppo 9%), 292 cases of Brucellosis (most of which were reported from Rural Damascus 45%, Idleb 28%, and Daraa 10%), 66 cases of Pertussis, and 23 cases of TB.
- ❖ Graph 4 and 5 below show the trend analysis of Typhoid cases reported from all governorates and the distribution of cases per governorates respectively. It shows that that the accumulative number of cases is higher in Idleb, DierEzor and Rural Damascus. In addition, the highest number of cases reported for this week were from Idleb.

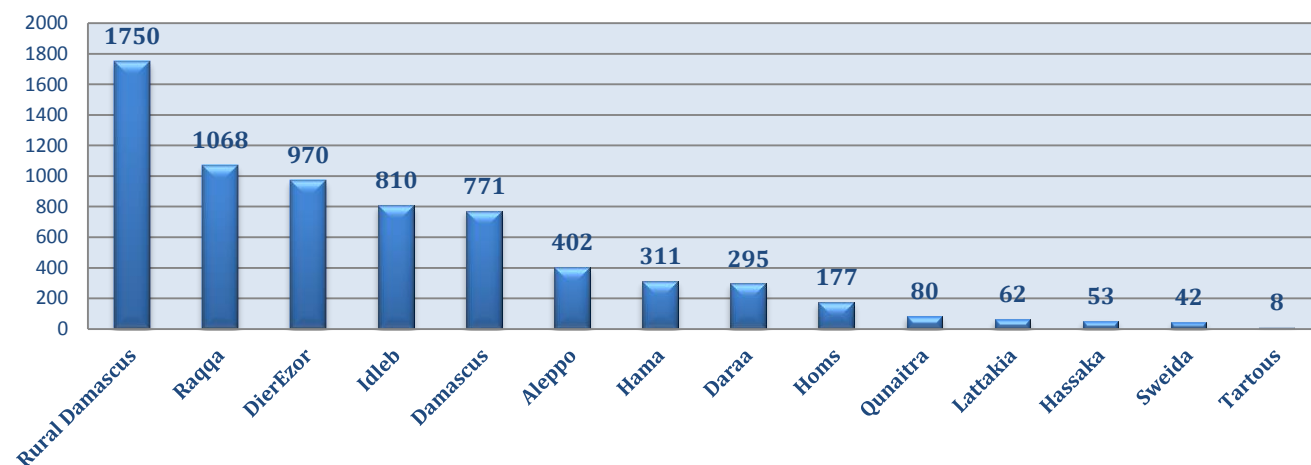


- ❖ Graph 6 and 7 below show the trend analysis of Brucellosis cases reported from all governorates and the distribution of cases per governorates respectively. It shows that that the accumulative number of cases is higher in Rural Damascus, Raqqa and DierEzor while the highest number of cases reported for this week were from Rural Damascus, Idleb and Daraa.

Graph 6: Trend analysis of Brucellosis Cases between WK1-WK38



Graph 7: Distribution of Brucellosis Cases between WK1-WK38 per governorate



❖ The Response

Acute Watery Diarrhoea: The case was detected at inaccessible area in Rural Damascus, no Sample was collected and the case was managed properly.

Bloody Diarrhoea: Cases are not clustered, most cases were reported from inaccessible area in Rural Damascus. No samples were collected and cases were managed properly.

Sever Acute Respiratory Infections: as a preparedness to the potential increase in the cases of SARI and ILI expected in autumn and winter time, WHO is procuring influenza vaccine to be distrusted to high risk groups. In addition, MoH has conducted trainings for the health workers on respiratory infections control and case management in nine governorates.

Measles: Blood samples have been collected from some cases and sent to the reference lab in Damascus. The cases reported from Rural Damascus are mostly from inaccessible areas, no sample were collected and the cases were managed properly.

Meningitis: Cases were managed according to the national protocol; and investigation forms were filled for some cases but not all; it shows that most of the cases are viral meningitis not bacterial. Preventive therapy was provided as necessary for contacts of the probable bacterial meningitis.

Typhoid: Trainings on case management of Typhoid and other water and food borne diseases were conducted by ministry of health for the health workers in nine governorates.

Table-1: Distribution of cases per age group, and by Governorate-week-38, 2015:

Code	age group	Idleb	Hassaka	Raqa	Sweida	Qunaitra	Lattakia	Aleppo	Hama	Homs	Daraa	Damascus	DierEzor	Rural Damascus	Tartous	Grand Total	
AD	< 5	345	112	182	120	119	795	438	214	111	147	442	325	412	113	3875	7331
	≥ 5	275	22	100	154	120	583	453	154	71	116	542	272	343	251	3456	
BD	< 5	0	11	1	9	2	17	0	0	1	3	6	17	22	0	89	138
	≥ 5	0	5	0	11	9	6	1	0	0	4	5	2	6	0	49	
AWD	< 5	0	0	0	0	0	0	0	0	0	0	0	0	0	0	0	1
	≥ 5	0	0	0	0	0	0	0	0	0	0	0	0	1	0	1	
AJS	< 5	213	0	36	1	5	10	53	13	17	30	21	23	41	4	467	1147
	≥ 5	177	1	33	17	11	54	74	43	14	48	109	13	72	14	680	
ILI	< 5	376	48	3	184	75	1289	559	95	7	82	248	378	289	347	3980	8682
	≥ 5	342	23	0	319	253	1091	380	82	19	119	460	400	468	746	4702	
AFP	< 5	0	0	0	0	0	0	0	0	0	0	0	0	0	0	0	0
	≥ 5	0	0	0	0	0	0	0	0	0	0	0	0	0	0	0	
SM	< 5	2	0	9	0	0	4	2	0	0	0	7	1	21	0	46	52
	≥ 5	1	0	0	0	0	0	0	0	0	0	1	3	1	0	6	
SMN	< 5	0	0	7	1	0	2	0	2	0	0	4	0	15	0	31	61
	≥ 5	0	0	4	1	0	1	0	10	0	0	2	0	12	0	30	
SARI	< 5	39	0	0	0	0	0	0	8	0	0	9	1	11	0	68	215
	≥ 5	21	0	0	2	0	0	0	88	0	0	23	1	12	0	147	
Others	< 5	455	0	8	1	87	11	271	34	18	17	43	35	157	9	1146	3201
	≥ 5	381	3	3	3	83	140	450	207	70	49	183	99	365	19	2055	
Total Sum of < 5		1430	171	246	316	288	2128	1323	366	154	279	780	780	968	473	9702	20828
Total Sum of ≥ 5		1197	54	140	507	476	1875	1358	584	174	336	1325	790	1280	1030	11126	
Total		2627	225	386	823	764	4003	2681	950	328	615	2105	1570	2248	1503	20828	