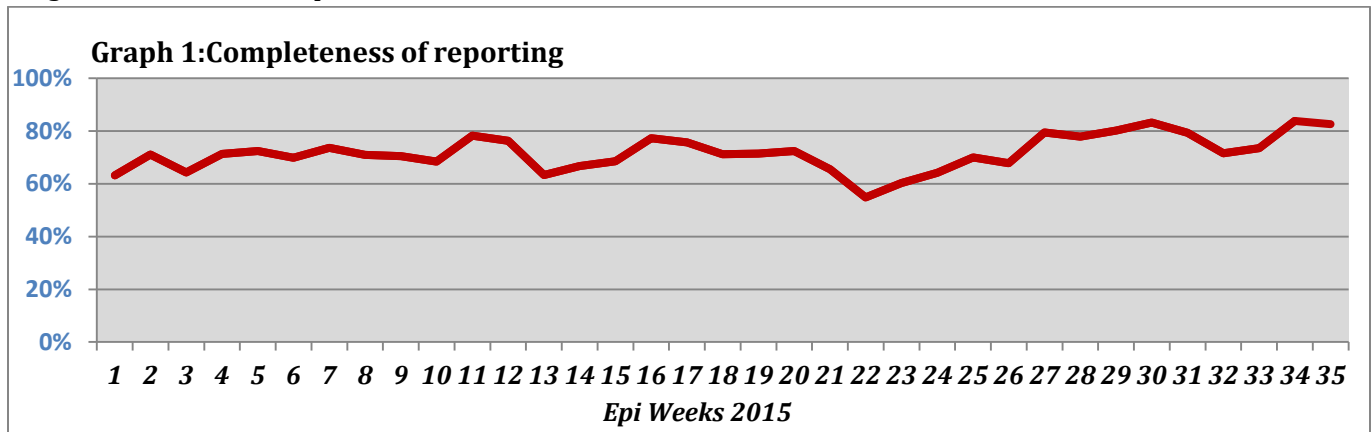


### Highlights:

- ❖ 7 AFP case was detected in Rural Damascus, Hama, Damascus and DierEzor.

### ❖ Completeness& Timeliness of Reporting

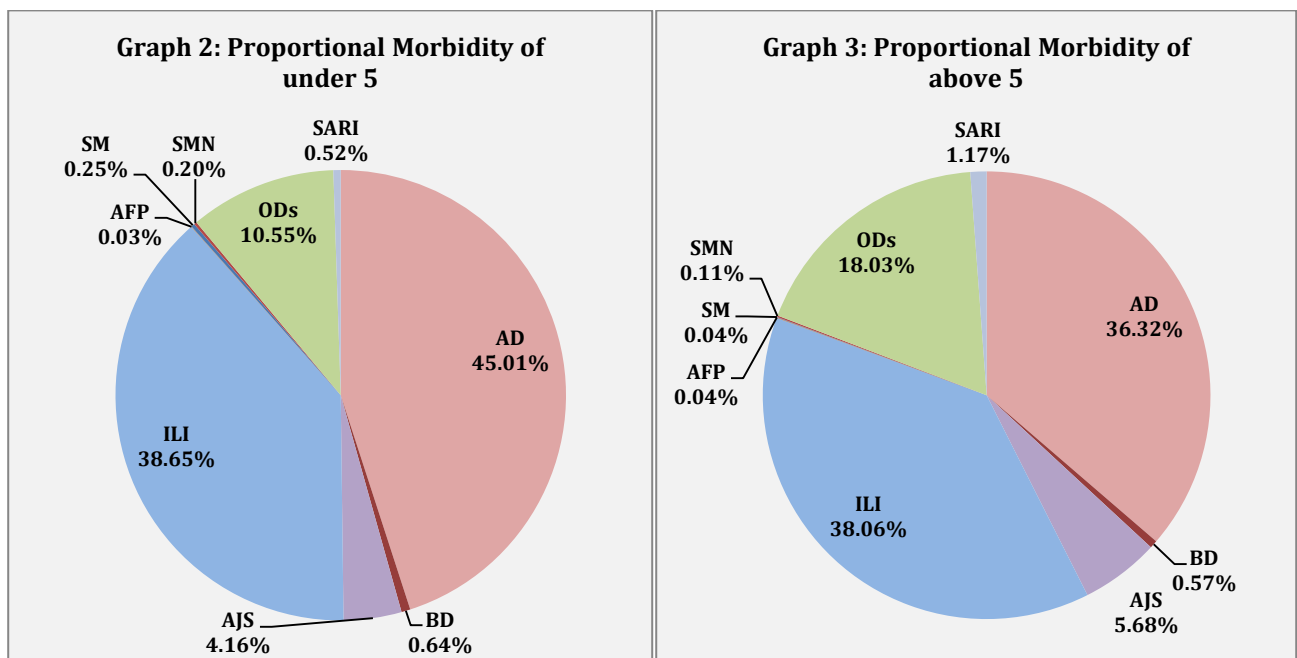
- ❖ The overall completeness of reporting was 83%; (785out of total 950 EWARS sentinel sites). (See Graph 1). 14 governorates have reported this week.



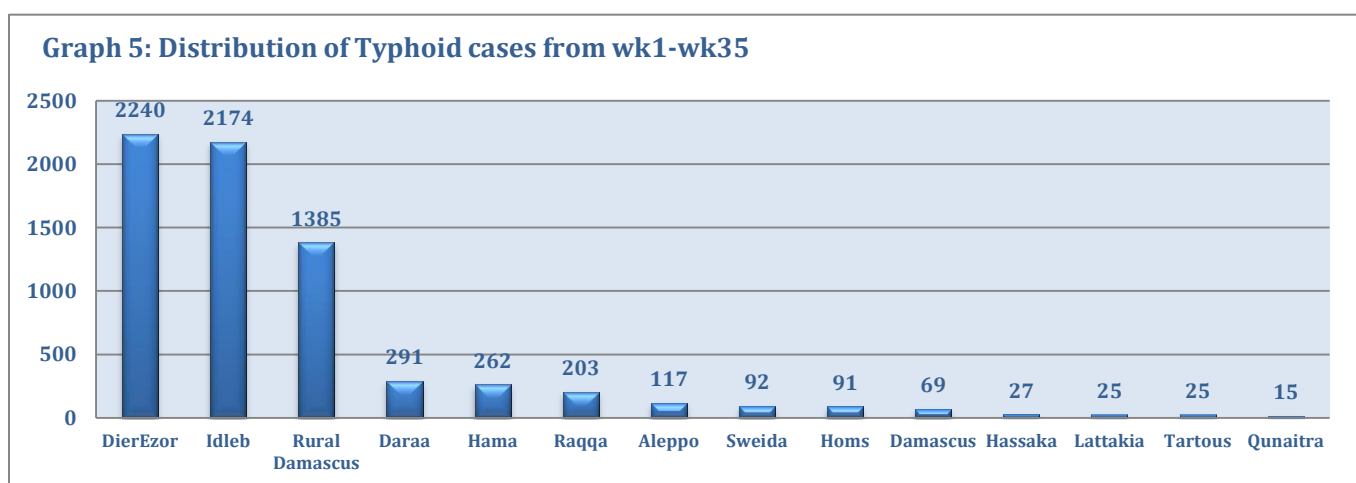
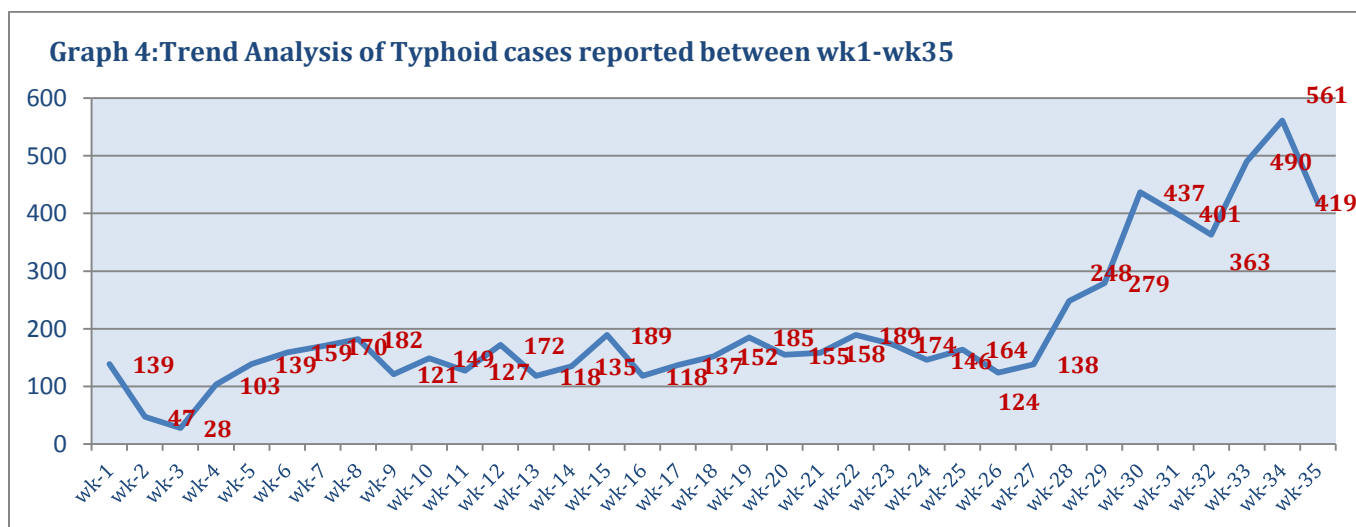
- ❖ Timeliness of reporting is 89%.

### ❖ The Morbidity Cases

- ❖ Out of the 188,257 total consultations, a total of 20,648 EWARS notifiable cases were reported; of which 8,327 cases were Acute Diarrhoea (40%), 7,914 cases were Influenza like Illness (38%), 1027 cases of AJS, 180 cases of Sever Acute Respiratory Infection, 124 cases of Bloody Diarrhoea, 31 cases of Suspected Meningitis, 28 cases of Suspected Measles, and 7 AFP cases.
- ❖ Graphs 2 and 3 below show the proportional morbidity among < 5 and ≥ 5 year age groups respectively.

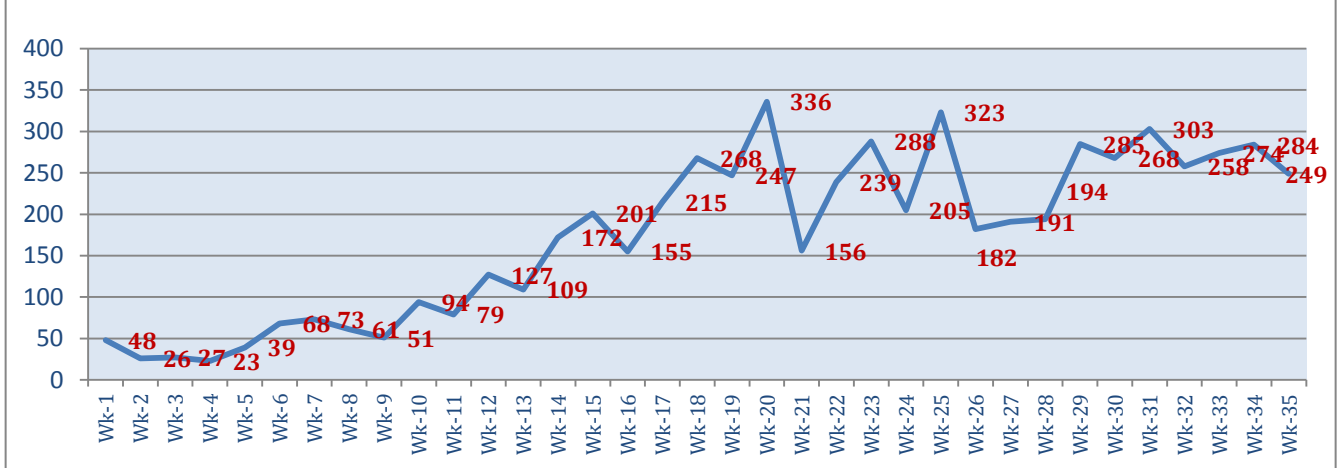


- ❖ AD constitutes (45%) among < 5 and (36.32%) among ≥ 5, while ILI constitutes (38.65%) of the cases among <5 and (38%) among ≥ 5.
- ❖ 51% of cases were distributed among males. 54% of the cases were distributed among ≥5 age group.
- ❖ In total 3,010 cases were reported as “other diseases”. The most important diseases reported within this group were: 419 cases of Typhoid (most of which were reported from Idleb 58%, and DierEzor 14% and Rural Damascus 12%), 414 cases of Leishmaniasis (most of which were reported from Idleb 47%, and Hamah 31%), 249 cases of Brucellosis (most of which were reported from Idleb 27%, Rural Damascus 20%, and Damascus 11%), 41 cases of Pertussis, and 23 cases of TB.
- ❖ Graph 4 and 5 below show the trend analysis of Typhoid cases reported from all governorates and the distribution of cases per governorate respectively. It shows that the accumulative number of cases is higher in DierEzor, Idleb and Rural Damascus while the highest number of cases reported for this week was from Idleb.

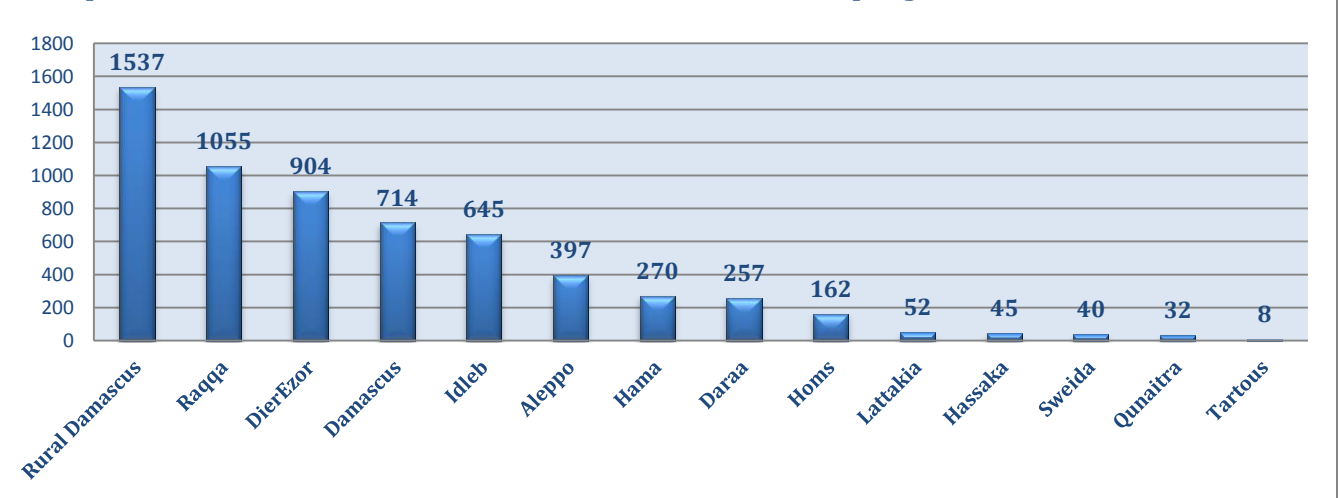


- ❖ Graph 6 and 7 below show the trend analysis of Brucellosis cases reported from all governorates and the distribution of cases per governorates respectively. It shows that the accumulative number of cases is higher in Rural Damascus, Raqqa and DierEzor while the highest numbers of cases reported for this week were from Idleb, Rural Damascus and Damascus.

**Graph 6: Trend analysis of Brucellosis Cases between WK1-WK35**



**Graph 7: Distribution of Brucellosis Cases between WK1-WK35 per governorate**



### ❖ The Response

**Acute flaccid paralysis:** Stool sample were collected from the AFP cases and sent to the reference lab in Damascus. The next round of Polio national vaccination campaign will be implemented between 18 and 22 of October. The annualized rate is 3 up to this week.

**Bloody Diarrhoea:** Most cases were reported from Lattakia and inaccessible areas in DierEzor, Cases are not clustered and were managed properly.

**Measles:** Blood samples have been collected from some cases and sent to the reference lab in Damascus.

**Brucellosis:** Health educational sessions at health facilities level, have been conducted to ensure food safety. Brochures for raising the awareness on Brucellosis prevention measures have been distributed to most governorates. For the increased cases in Idleb, WHO is working with the focal point in Idleb to provide patients there with needed medicines to manage Brucellosis cases.

**Meningitis:** Cases were managed according to the national protocol; and investigation forms were filled for some cases but not all; it shows that most of the cases are viral meningitis not bacterial. Preventive therapy was provided as necessary for contacts of the probable bacterial meningitis.

**Typhoid:** Most cases were reported from inaccessible areas in Idleb, WHO is working with the focal point in Idleb to provide patients with needed medicines to manage the cases. In addition, WHO is dispatching Typhoid medicines to Talbisa area in Homs where an increase in the Typhoid cases was noticed this week.

**Table-1: Distribution of cases per age group, and by Governorate-week-35, 2015:**

Code	age group	Idleb	Hassaka	Raqqa	Sweida	Qunaitra	Lattakia	Aleppo	Hama	Homs	Daraa	Damascus	DierEzor	Rural Damascus	Tartous	Grand Total
AD	< 5	377	150	242	151	39	763	644	210	113	87	574	383	382	174	4289
	≥ 5	294	35	82	156	59	682	682	194	93	73	631	353	352	352	4038
BD	< 5	0	9	6	5	2	12	1	0	0	2	8	13	2	1	61
	≥ 5	1	9	0	6	8	17	2	0	0	3	6	8	3	0	63
AWD	< 5	0	0	0	0	0	0	0	0	0	0	0	0	0	0	0
	≥ 5	0	0	0	0	0	0	0	0	0	0	0	0	0	0	0
AJS	< 5	169	0	26	5	2	13	53	9	30	1	23	42	22	1	396
	≥ 5	130	0	13	31	3	51	95	30	37	4	134	38	53	12	631
ILI	< 5	388	38	0	129	24	1120	503	93	24	39	315	427	229	354	3683
	≥ 5	312	18	0	291	16	990	366	95	29	56	521	379	370	788	4231
AFP	< 5	0	0	0	0	0	0	0	0	0	0	1	0	2	0	3
	≥ 5	0	0	0	0	0	0	0	2	0	0	0	1	1	0	4
SM	< 5	2	0	11	2	0	0	0	1	1	0	2	2	3	0	24
	≥ 5	0	0	1	0	0	0	0	0	0	0	0	1	2	0	4
SMN	< 5	0	0	4	0	0	0	0	10	0	0	4	0	0	1	19
	≥ 5	0	0	3	1	0	0	0	6	0	0	2	0	0	0	12
SARI	< 5	23	0	0	0	0	1	0	15	0	0	5	4	2	0	50
	≥ 5	24	0	0	1	0	1	0	41	0	0	60	1	2	0	130
Others	< 5	421	1	20	2	46	23	247	67	20	6	33	44	73	2	1005
	≥ 5	444	3	9	10	74	127	430	231	42	20	212	124	259	20	2005
Total Sum of < 5		1380	198	309	294	113	1932	1448	405	188	135	965	915	715	533	9530
Total Sum of ≥ 5		1205	65	108	496	160	1868	1575	599	201	156	1566	905	1042	1172	11118
Total		2585	263	417	790	273	3800	3023	1004	389	291	2531	1820	1757	1705	20648