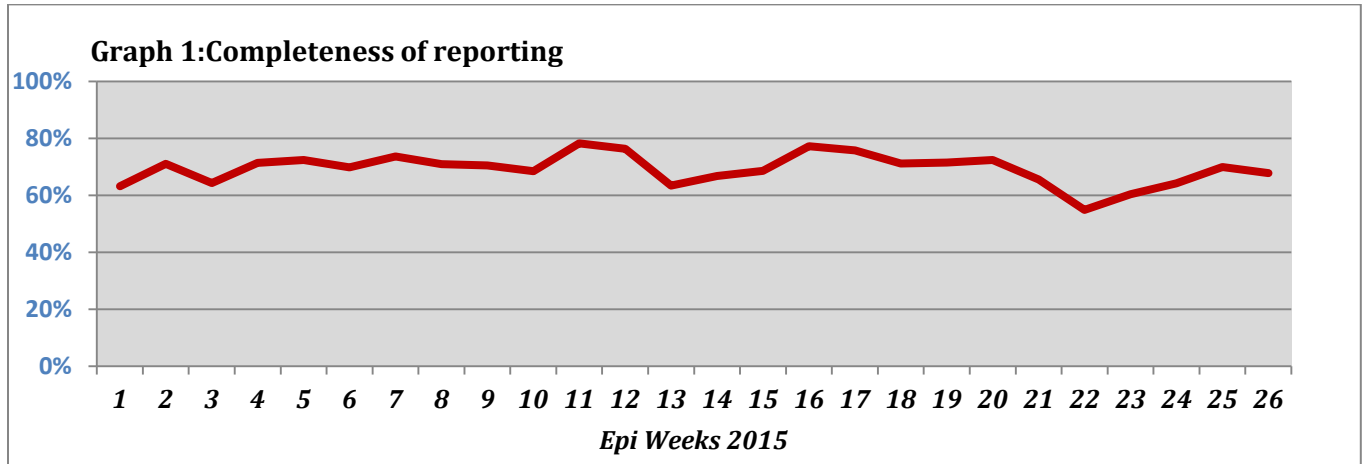


Highlights:

❖ 1 AWD case was detected in Damascus.

❖ Completeness& Timeliness of Reporting

❖ The overall completeness of reporting was 68%; (614 out of total 906 EWARS sentinel sites).(See Graph 1). 14 governorates have reported this week.

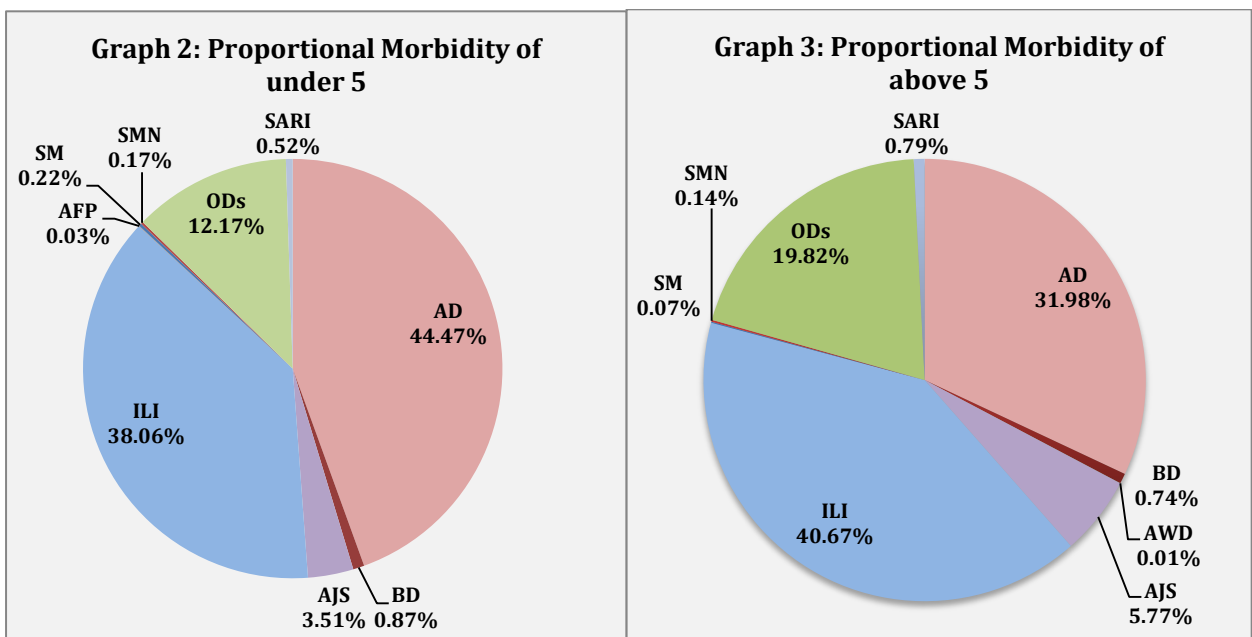


❖ Timeliness of reporting is 84%.

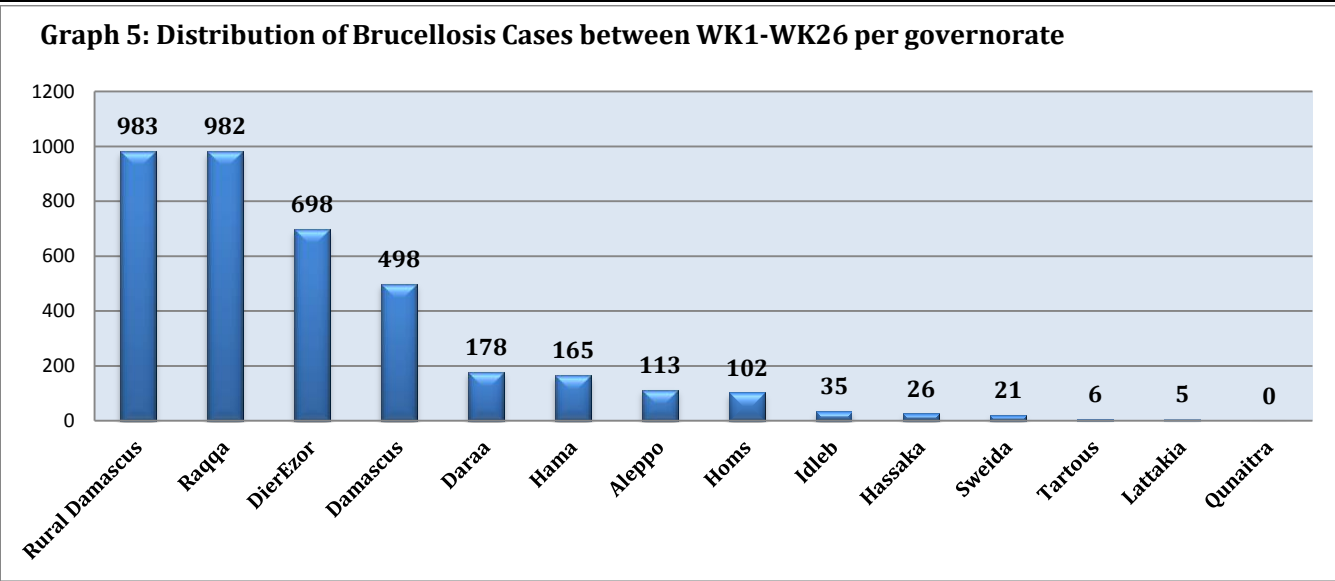
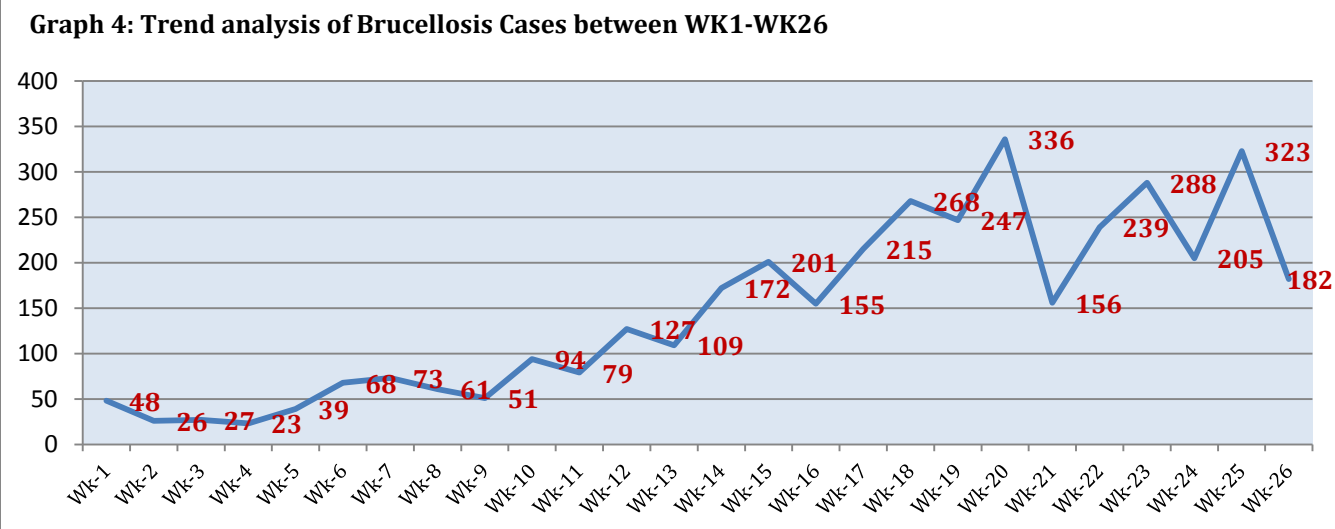
❖ The Morbidity Cases

❖ Out of the 149,726 total consultations, a total of 15,284 EWARS notifiable cases were reported; of which 5,753 cases were Acute Diarrhoea (38%) 6,035 cases were Influenza like Illness (39%), 725 cases of AJS, 122 cases of Bloody Diarrhoea, 102 cases of Sever Acute Respiratory Infection, 21 cases of Suspected Measles, 24 cases of Meningitis, 2 cases of AFP and 1 AWD case.

❖ Graphs 2 and 3 below show the proportional morbidity among < 5 and ≥ 5 year age groups respectively.



- ❖ AD constitutes (44.47%) among < 5 and (31.98%) among ≥ 5, while ILI constitutes (38.06%) of the cases among <5 and (40.67%) among ≥ 5.
- ❖ 52% of cases were distributed among males and 55% of the cases were distributed among ≥5 age group.
- ❖ In total, 2,499 cases were reported as “other diseases”. The most important diseases reported within this group were: 328 cases of Leishmaniasis (most of which were reported from Idleb 42%, Hamah 20%, and Aleppo 13%), 182 cases of Brucellosis (most of which were reported from Rural Damascus 45%, DierEzor 18% and Damascus 16%), 124 cases of Typhoid (most of which were reported from DierEzor 44%, Rural Damascus 33% and Hama 10%), 66 cases of Pertussis, and 20 cases of TB.
- ❖ Graph 4 and 5 below show the trend analysis of Brucellosis cases reported from all governorates and the distribution of cases per governorates respectively. It shows that Rural Damascus, DierEzor and Damascus have the highest number of cases.



❖ The Response

Acute flaccid paralysis: Stool samples were collected from the AFP cases and sent to the reference lab in Damascus. The last round of Polio national vaccination campaign was implemented between 31st May and 4th June. The annualized rate is 3.1 up to this week.

Acute Watery Diarrhoea: the case was managed properly; samples were collected from the case and lab result for cholera was negative.

Bloody Diarrhoea: no samples have been collected from the detected cases.

Measles: Blood samples have been collected from some cases and sent to the reference lab in Damascus.

Brucellosis: Several supervisory visits to Brucellosis treatment centers have been conducted in 7 governorates during the last two months and are still on going to ensure the compliance of the physicians and the focal points with the national treatment plan , the proper patients follow up and the availability of the needed medicines in these centers.

Meningitis: Cases were managed according to the national protocol; and investigation forms were filled for some cases but not all; it shows that most of the cases are viral meningitis not bacterial. Preventive therapy was provided as necessary for contacts of the probable bacterial meningitis

Table-1: Distribution of cases per age group, and by Governorate-week-26, 2015:

Code	age group	Idleb	Hassaka	Raqqa	Sweida	Qunaitra	Lattakia	Aleppo	Hama	Homs	Daraa	Damascus	DierEzor	Rural Damascus	Tartous	Grand Total	
AD	< 5	116	91	98	201	67	248	365	237	23	174	526	452	393	90	3081	5753
	≥ 5	136	41	35	216	78	223	239	194	21	187	454	411	319	118	2672	
BD	< 5	0	19	0	3	1	2	1	0	0	11	3	18	2	0	60	122
	≥ 5	0	8	0	5	8	6	0	0	0	13	4	15	3	0	62	
AWD	< 5	0	0	0	0	0	0	0	0	0	0	0	0	0	0	0	1
	≥ 5	0	0	0	0	0	0	0	0	0	0	1	0	0	0	1	
AJS	< 5	62	0	10	1	5	4	41	17	9	4	27	37	26	0	243	725
	≥ 5	63	1	13	6	22	23	88	41	15	6	101	21	80	2	482	
ILI	< 5	220	35	2	107	67	398	406	94	7	53	320	462	190	276	2637	6035
	≥ 5	173	23	1	159	208	537	342	116	11	88	492	410	305	533	3398	
AFP	< 5	0	0	0	1	0	0	0	1	0	0	0	0	0	0	2	2
	≥ 5	0	0	0	0	0	0	0	0	0	0	0	0	0	0	0	
SM	< 5	1	0	4	0	0	2	1	0	0	0	5	1	1	0	15	21
	≥ 5	0	0	5	0	0	0	0	0	0	0	0	1	0	0	6	
SMN	< 5	0	0	7	0	0	0	0	2	0	0	3	0	0	0	12	24
	≥ 5	0	0	3	1	0	0	0	3	0	0	4	1	0	0	12	
SARI	< 5	2	3	0	2	0	1	0	10	0	0	9	9	0	0	36	102
	≥ 5	6	0	0	7	0	0	0	5	0	0	45	3	0	0	66	
Others	< 5	123	0	7	9	54	3	373	19	0	23	84	54	94	0	843	2499
	≥ 5	215	1	7	11	100	82	420	120	12	39	167	157	314	11	1656	
Total Sum of < 5		524	148	128	324	194	658	1187	380	39	265	977	1033	706	366	6929	15284
Total Sum of ≥ 5		593	74	64	405	416	871	1089	479	59	333	1268	1019	1021	664	8355	
Total		1117	222	192	729	610	1529	2276	859	98	598	2245	2052	1727	1030	15284	