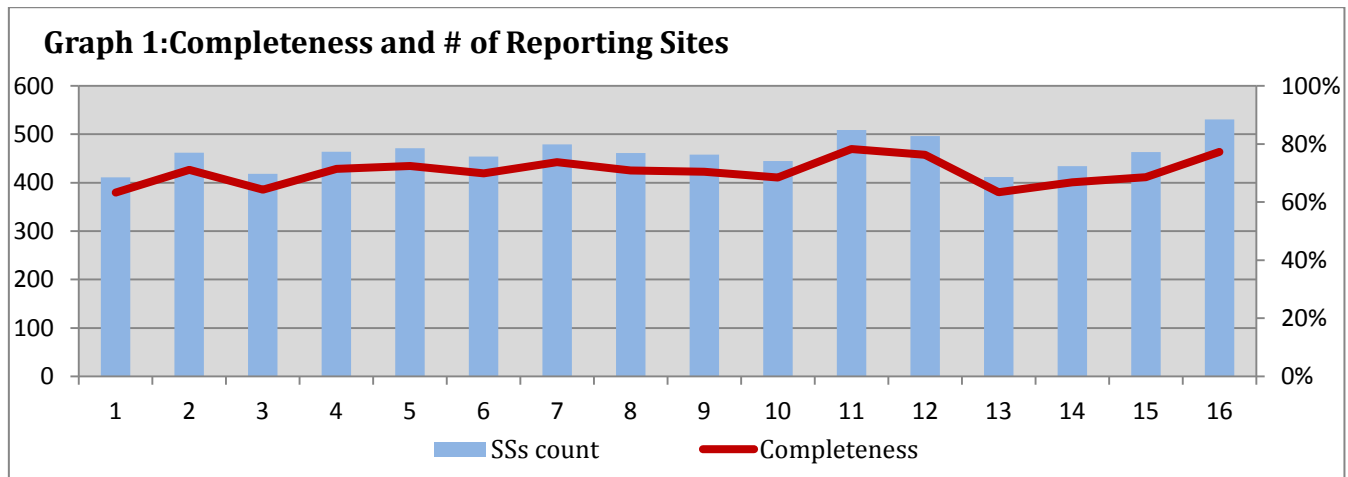


**Highlights:**

- ❖ 2 AFP case were detected in Sweida and Hassaka.

**❖ Completeness& Timeliness of Reporting**

- ❖ The overall completeness of reporting was 77%; (531 out of total 687 EWARS sentinel sites). (See Graph 1). 14 governorates have reported this week.

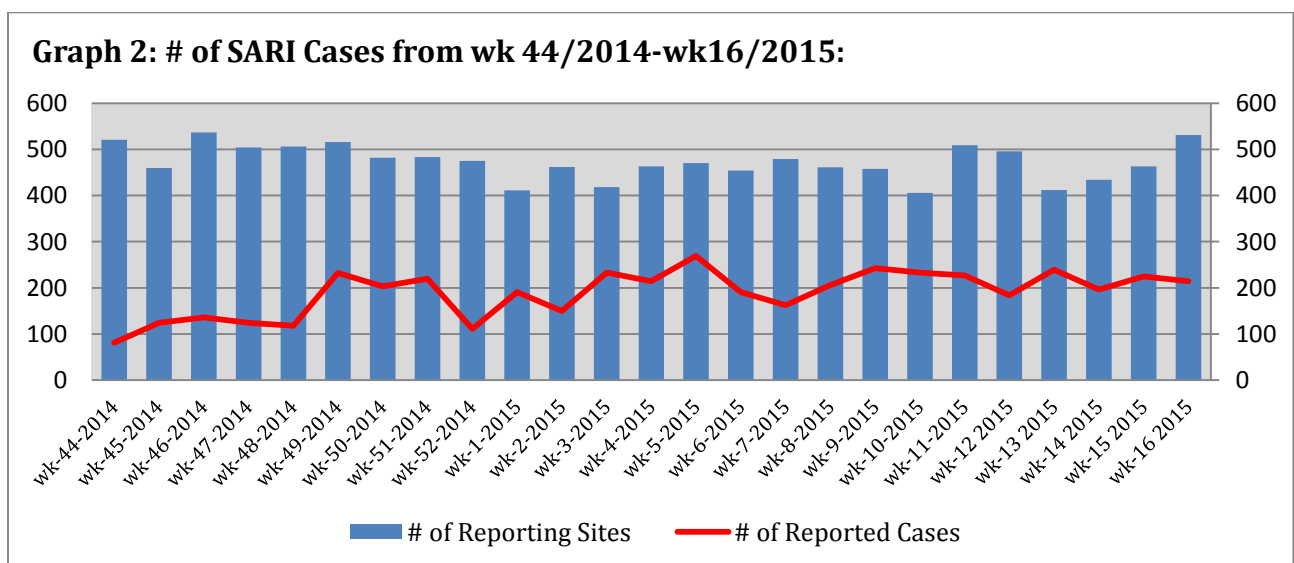


- ❖ Timeliness of reporting is 74%.

**❖ The Morbidity Cases**

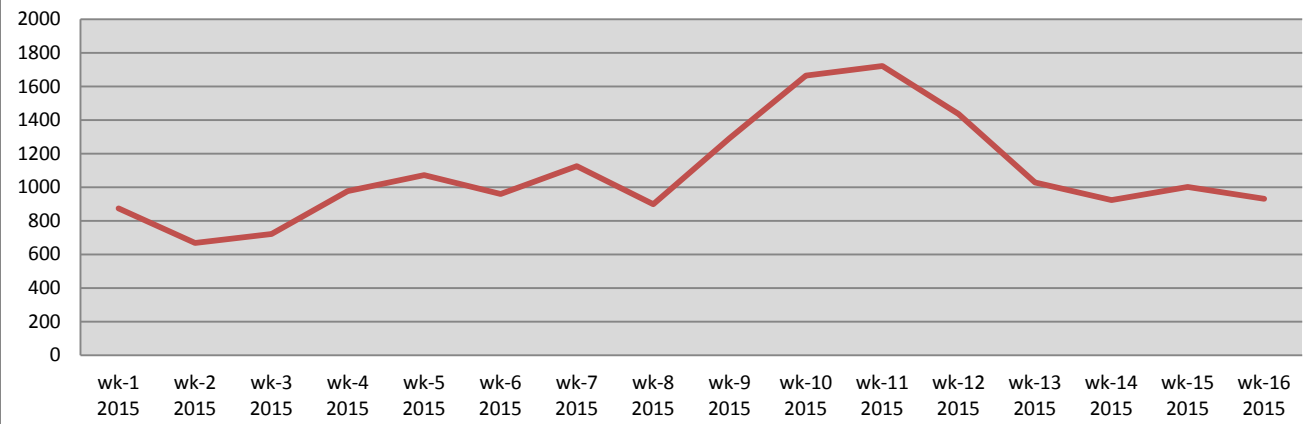
- ❖ Out of the 155,851 total consultations, a total of 17,017 cases were reported; of which 9,245 cases were Influenza like Illness (54%), 3,755 cases were Acute Diarrhoea (22%), 932 cases of AJS, 214 cases of Sever Acute Respiratory Infection, 94 cases of Bloody Diarrhoea, 28 cases of Suspected Measles, 24 cases of Meningitis, and 2 AFP cases.

- ❖ Below chart reflects the trend in the number of SARI cases in 2014 and 2015 in the period between week 44 - 2014 and week 16-2015.

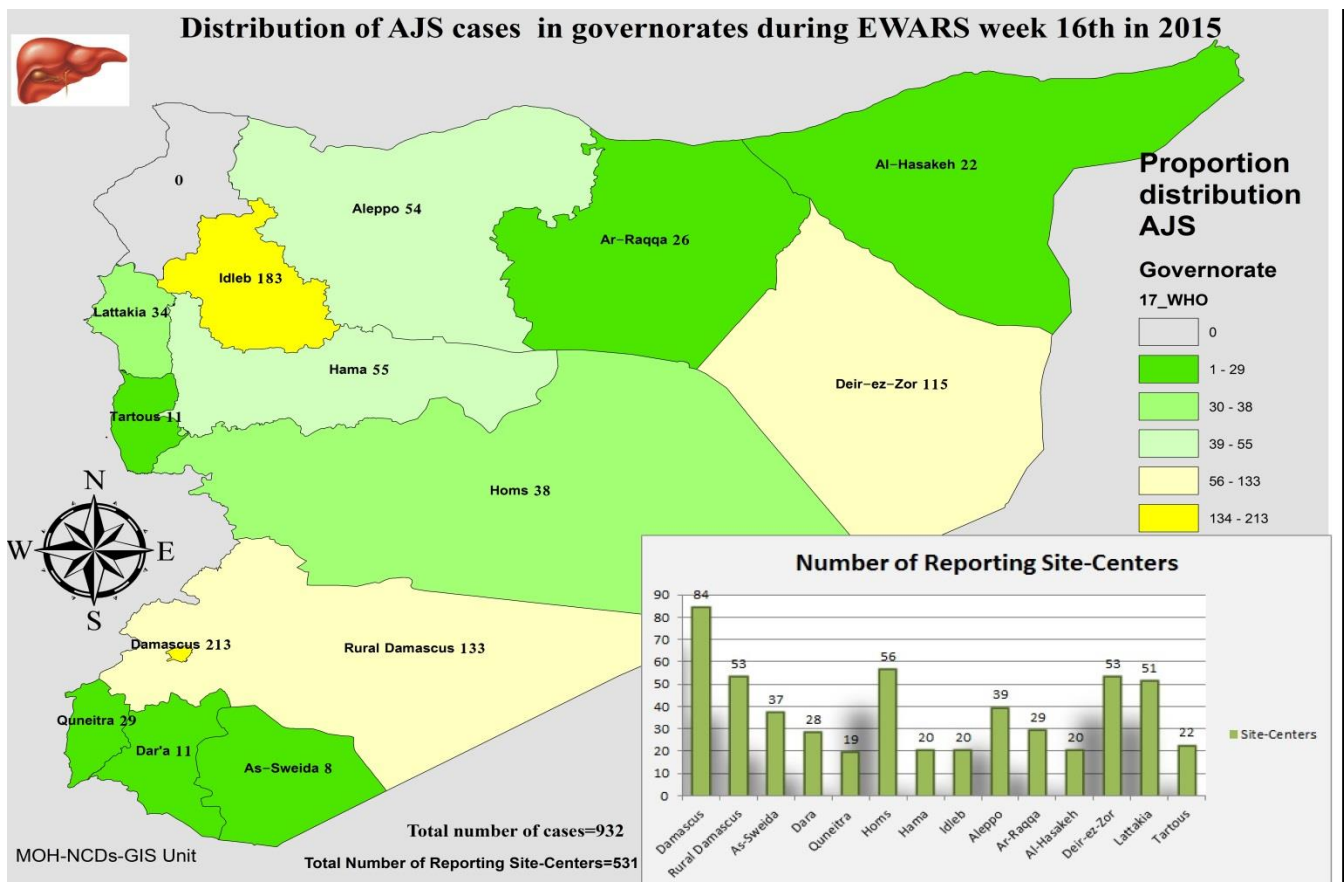


- ❖ Graph 3 displays the trend of the (17,303) AJS cases between wk1-wk16/2015. The distribution of the cases per governorates shows that Damascus, Idleb, and Rural Damascus have the highest number of cases for this week.

**Graph 3: Trend of AJS reported cases from WK1-WK16/2015:**



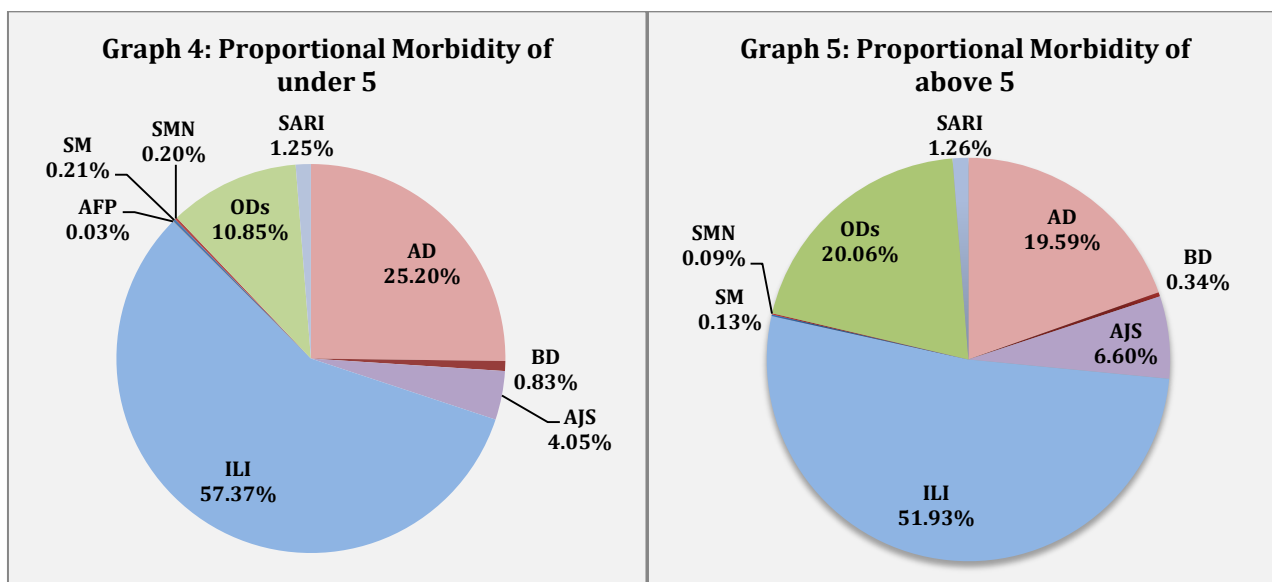
- ❖ Below map display the distribution of AJS cases for week 16 , per governorate:



- ❖ In total, 2,723 cases were reported as “other diseases”. The most important diseases reported within this group were: 394 cases of Leishmaniasis (most of which were reported from Hamah 30%, Idleb 21%, and Damascus 14%), 155 cases of Brucellosis (most of which were reported from Raqua 45%, Rural Damascus

21%, and DierEzor 13%), 118 cases of Typhoid (most of which were reported from DierEzor 48% and Rural Damascus 17%), 46 cases of Pertussis, and 18 cases of TB.

- ❖ 56 %of the cases were distributed among  $\geq 5$  age group.
- ❖ ILI consists (57.37%) of the cases among  $<5$  and (51.93%) among  $\geq 5$ , while AD cases consists (25.20%) among  $<5$  and (19.59%) among  $\geq 5$ .
- ❖ Graphs 4 and 5 below show the proportional morbidity among  $< 5$  and  $\geq 5$  year age groups respectively.



- ❖ 51% of cases were distributed among males.

❖ **The Response**

**AFP:** Stool samples were collected from the AFP cases and sent to the reference lab in Damascus. The last national vaccination campaign was implemented between 22th and 26th March.

**AJS and water and food borne diseases:** RRTs conducted field visits to restaurants and collected samples from food and water. Samples were sent to the public health lab for investigation. The campaign for the prevention of food and water borne diseases is still ongoing.

**SM:** Blood samples have been collected from some cases with investigation forms completed. Vit. A was provided and new national vaccination campaign will be implemented between 19th and 30th April.

**Meningitis:** Meningitis cases detected are not clustered. Cases were managed properly; and investigation forms were filled for some cases but not all; it shows that most of the cases are viral meningitis not bacterial. Preventive therapy was provided as necessary for contacts of the probable bacterial meningitis cases.

**Table-1: Distribution of cases per age group, and by Governorate-week-16, 2015:**

Code	age group	Idleb	Hassaka	Raqua	Sweida	Qunaitra	Lattakia	Aleppo	Hamah	Homs	Daraa	Damascus	DierEzor	Rural Damascus	Tartous	Grand Total	
AD	< 5	140	132	74	76	56	149	86	158	25	131	246	371	213	33	1890	3755
	≥ 5	158	65	48	137	94	147	84	71	20	84	308	357	235	57	1865	
BD	< 5	0	30	0	3	3	4	0	1	0	5	2	14	0	0	62	94
	≥ 5	0	6	1	5	7	2	0	0	0	3	3	4	0	1	32	
AWD	< 5	0	0	0	0	0	0	0	0	0	0	0	0	0	0	0	0
	≥ 5	0	0	0	0	0	0	0	0	0	0	0	0	0	0	0	
AJS	< 5	88	19	13	0	6	10	17	15	14	3	42	50	25	2	304	932
	≥ 5	95	3	13	8	23	24	37	40	24	8	171	65	108	9	628	
ILI	< 5	202	110	19	235	88	860	382	205	24	138	433	942	310	354	4302	9245
	≥ 5	185	110	7	501	168	748	373	138	28	170	562	942	440	571	4943	
AFP	< 5	0	1	0	1	0	0	0	0	0	0	0	0	0	0	2	2
	≥ 5	0	0	0	0	0	0	0	0	0	0	0	0	0	0	0	
SM	< 5	4	0	7	0	0	2	0	0	0	0	2	1	0	0	16	28
	≥ 5	6	0	1	0	0	1	0	0	0	0	1	2	0	1	12	
SMN	< 5	5	0	3	0	0	2	0	4	0	0	1	0	0	0	15	24
	≥ 5	6	0	0	1	0	0	0	0	0	0	1	0	1	0	9	
SARI	< 5	3	29	0	15	0	0	0	12	0	0	22	13	0	0	94	214
	≥ 5	2	25	0	19	0	3	0	11	0	0	53	7	0	0	120	
Others	< 5	69	0	50	4	71	6	237	35	41	54	67	64	110	6	814	2723
	≥ 5	194	2	118	11	113	158	305	161	93	71	238	125	284	36	1909	
Total Sum of < 5		511	321	166	334	224	1033	722	430	104	331	815	1455	658	395	7499	17017
Total Sum of ≥ 5		646	211	188	682	405	1083	799	421	165	336	1337	1502	1068	675	9518	
Total		1157	532	354	1016	629	2116	1521	851	269	667	2152	2957	1726	1070	17017	