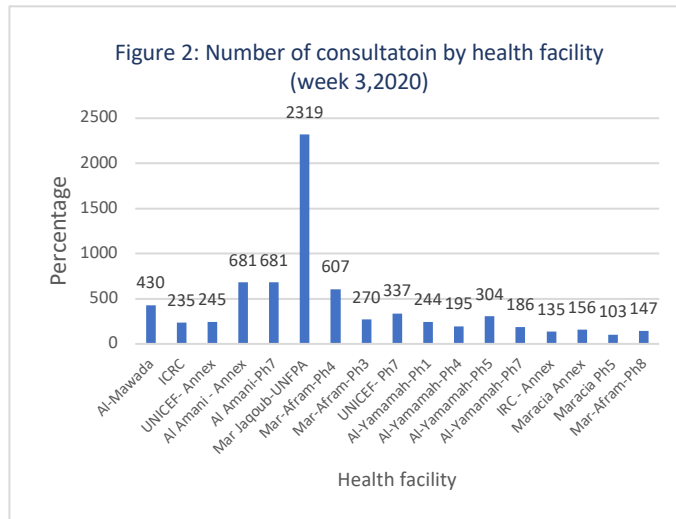
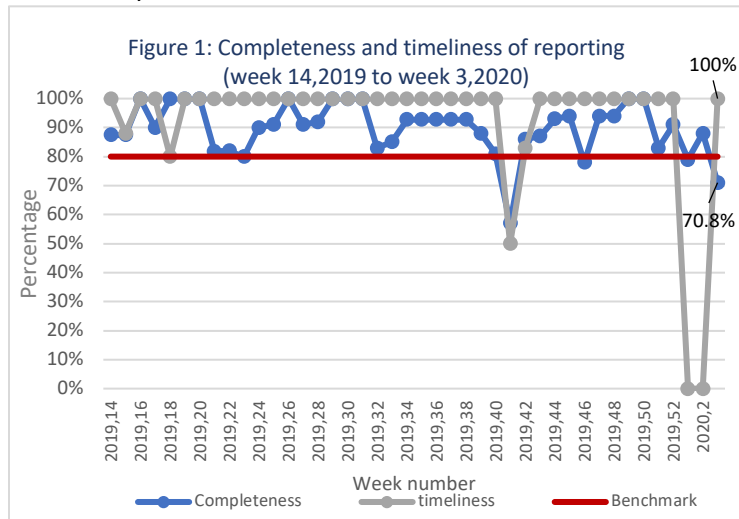


Highlights

- During epidemiological week 3 of 2020, a total of 17 out of 24 active EWARS reporting sites in Al-Hol camp (70.8%) provided diseases surveillance data through the early warning alert and response system (EWARS).
- A total of 7275 consultations were recorded in 17 health facilities in the camp in week 3.
- The leading causes of morbidity among all age groups remained influenza-like illnesses (59.5%) and acute diarrhea (27.2%). The proportional morbidity of ILI among the total consultation was 8.0%, which decreased by 5.0% compared to the previous week, while trend of AD remains stable.
- No case of acute flaccid paralysis case was reported, and there was no measles case were reported.
- Nine cases of severe acute respiratory infection (SARI) were reported and hospitalized in ICRC field hospital. Six cases were children under 5 years old and three cases were children above 5 years old.

Performance Indicators

- A total of 17 out of 24 active health facilities in Al-Hol camp reported through EWARS submitted their data (70.8% of reporting completeness) with 100% completeness (Figure 1). The low reporting timeliness attributed to the gap in data entry officer.



Morbidity

1. Proportional Morbidity

- A total of 7275 consultations were recorded from 17 medical points in the camp in week 3. Out of 7275 consultations, 977 cases were EWARS notifiable health conditions (Figure 2).
- Of the 977 total reported cases, 56.0 % (547) were female and 59.5% (581) were children under 5 years old.
- Among all age groups, the leading causes of morbidity are influenza-like illnesses (ILI) (59.5%) and acute diarrhea (AD) (27.2%).
- Among children under 5 years of age, ILI represents 41.6 % of the reported cases and AD represents 27.3% during this reporting period (Figure 3). The proportional morbidity of ILI among children under 5 years decreased by 13.5% compared to the previous week.
- The proportional morbidity of ILI among the total consultation was 8.0%, which decreased by 5.0% compared to the previous week, while the proportional morbidity of AD remains stable (Figure 4).

Figure 3: Proportional morbidity by age group in week 3, 2020

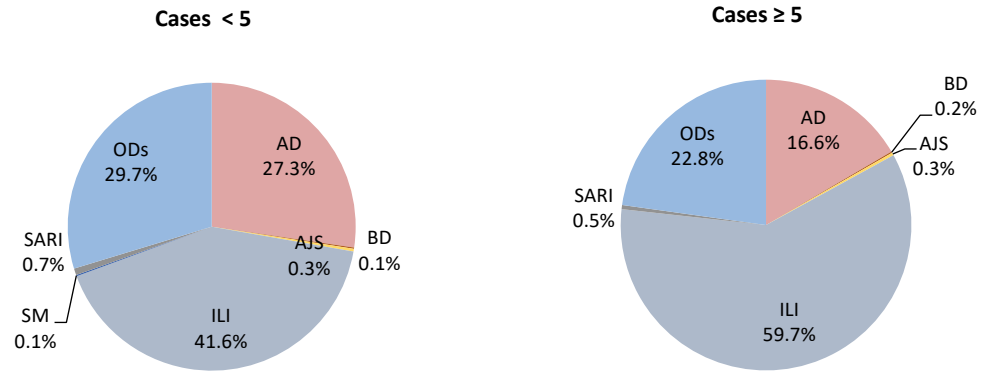
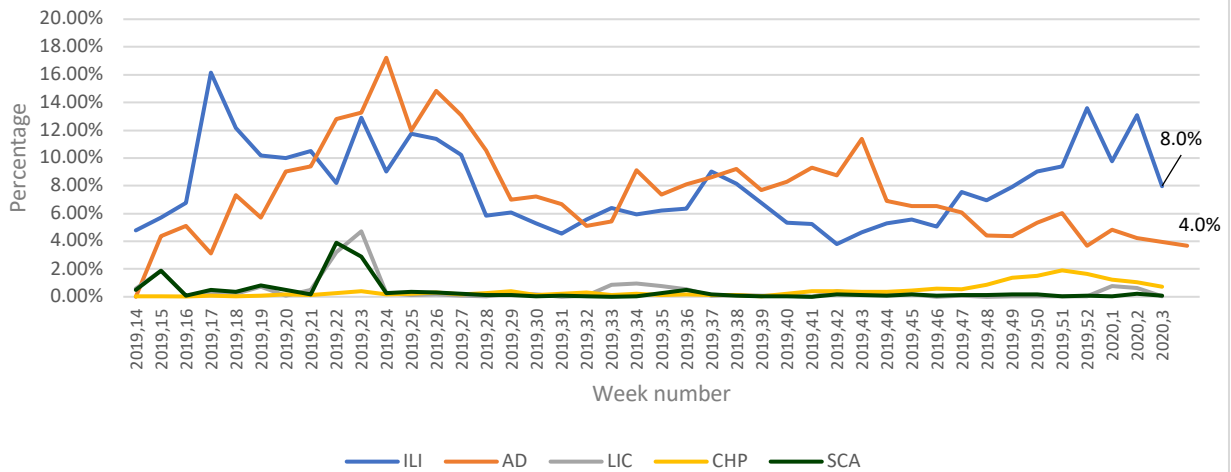


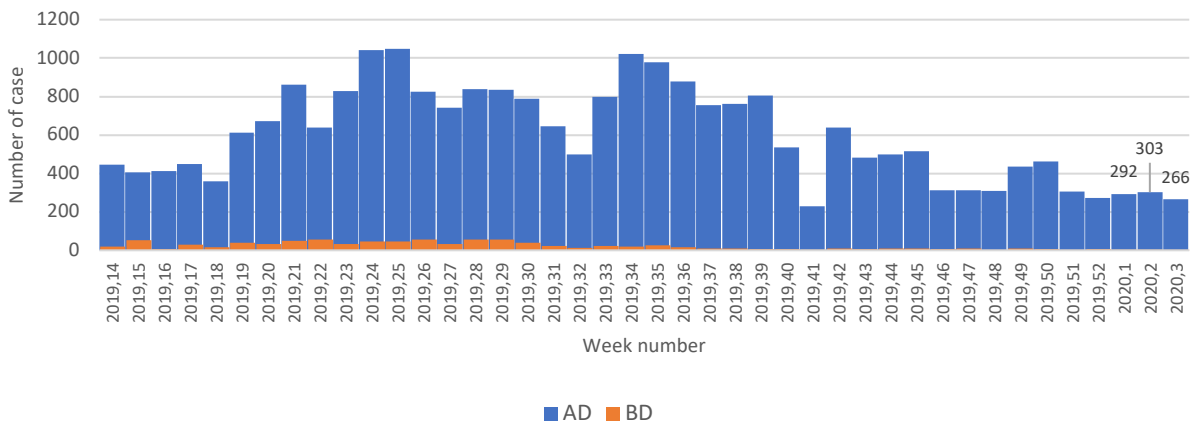
Figure 4: Proportional morbidity of top 5 diseases among the total consultation (week 14,2019 to week 3,2020)



2. Waterborne Diseases

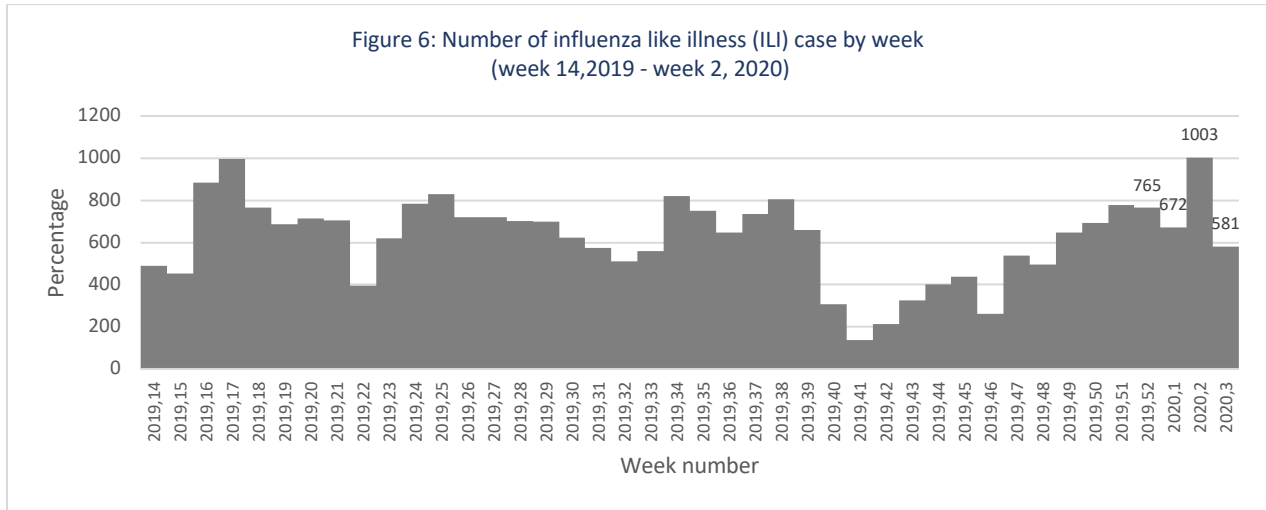
- The number of reported cases of AD during week 3 was 266. The trend remains stable. (Figure 5).
- Zero acute watery diarrhoea (AWD) were reported this reporting period.

Figure 5: Number of acute diarrhoea (AD) and bloody diarrhoea (BD) cases by week (week 14, 2019-week 3,2020)



3. Respiratory Diseases

- In total, 581 ILI cases were reported during week 3 (Figure 6), which decreased by 40.0% compared to the average of the previous three weeks.
- Nine cases of severe acute respiratory infection (SARI) were reported and hospitalized in ICRC field hospital. Six cases were children under 5 years old and three cases were children above 5 years old.

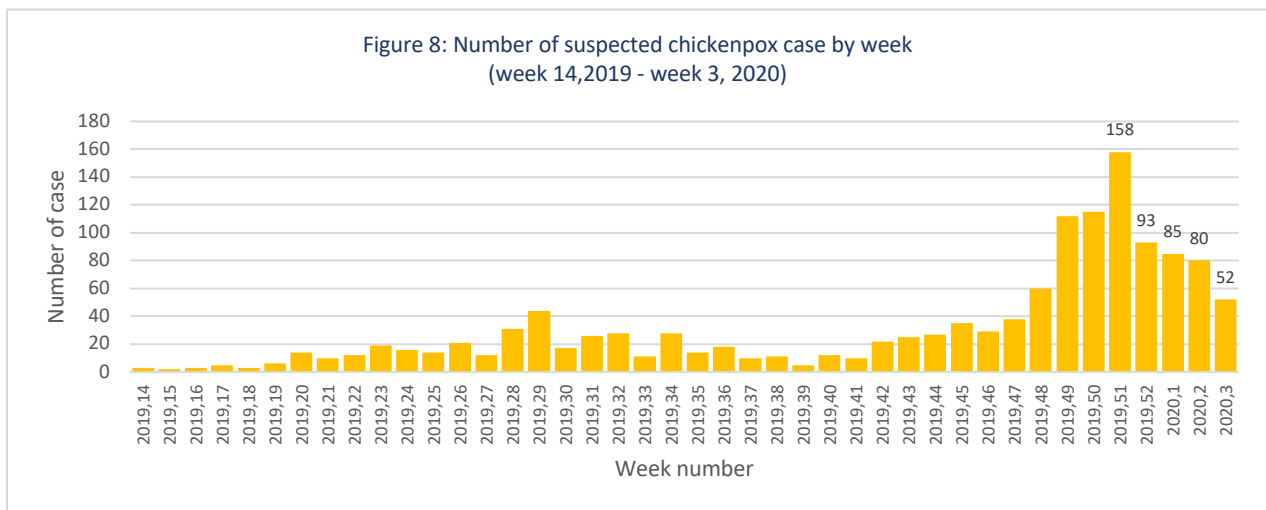


4. Vaccine Preventable Diseases

- No case of acute flaccid paralysis case was reported, and there was no measles case were reported.

5. Other Diseases

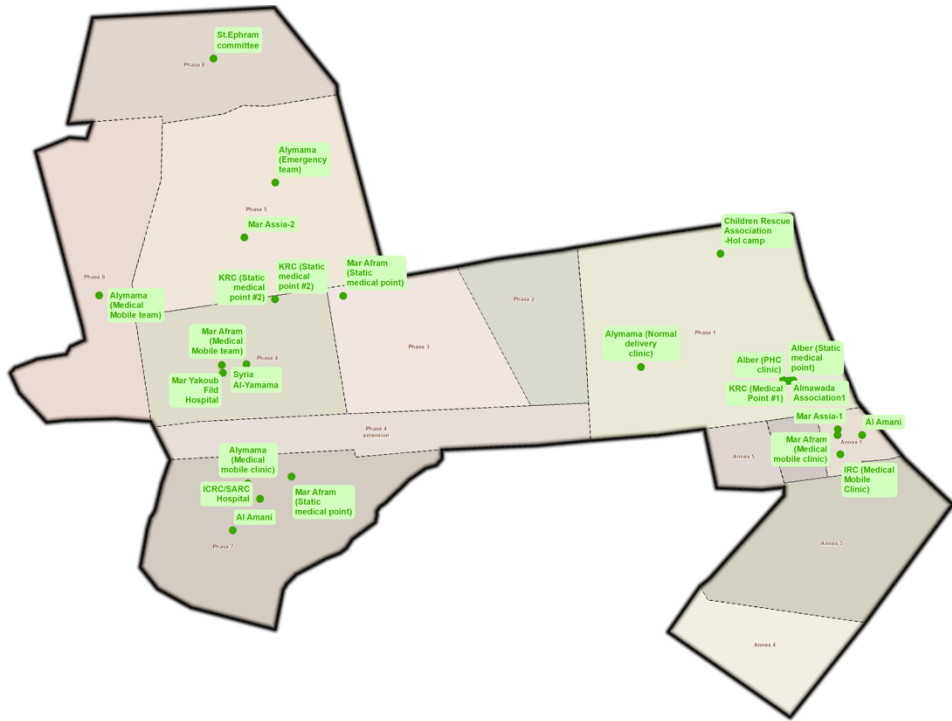
- 116 cases were reported as “other diseases” through EWARS in week 3,2020. The health conditions with the highest incidents were chickenpox (52 cases), scabies (6 cases), and lice (4 cases)
- A total of 52 cases of suspected chickenpox were reported in week 3 which decreased by 39.5% compared to the average number of cases in the last three weeks (Figure 8). 86.5% of the cases are children under 5 years old.



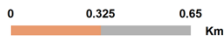
Annex 1: Case Distribution by Age Group

Health Condition	Age Group	Total week 2		Total week 3	
		<5	≥5	<5	≥5
Acute diarrhea (AD)	<5	192	303	<5	181
	≥5	111		85	
Bloody diarrhea (BD)	<5	2	3	<5	2
	≥5	1		2	
Acute watery diarrhea (AWD)	<5	0	0	<5	0
	≥5	0		0	
Acute jaundice syndrome (AJS)	<5	0	1	<5	0
	≥5	1		1	
Influenza like illness (ILI)	<5	488	1003	<5	308
	≥5	515		237	
Acute flaccid paralysis (AFP)	<5	0	0	<5	0
	≥5	0		0	
Suspected measles (SM)	<5	1	1	<5	0
	≥5	0		0	
Suspected meningitis (SMN)	<5	0	0	<5	0
	≥5	0		0	
Severe acute respiratory infection (SARI)	<5	4	5	<5	6
	≥5	1		3	
Others	<5	188	278	<5	84
	≥5	90		32	
Total sum of <5	<5	875		581	
Total sum of ≥5	≥5	720		394	
Total		1 595		977	

Annex 2: Map of Al-Hol camp



The boundaries and names shown and the designations used on this map do not imply the expression of any opinion whatsoever on the part of the World Health Organization concerning the legal status of any country, territory, city or area or of its authorities, or concerning the delimitation of its frontiers or boundaries. Dotted and dashed lines on maps represent approximate border lines for which there may not yet be full agreement.



Data source: EWARS
 Map production: Health Information Management Unit,
 Country office, Syrian Arab Republic
 World Health Organization

© WHO 2020. All rights reserved