







In this issue of Syria COVID-19 Morbidity and Mortality Summary (SMMS) N° 07:

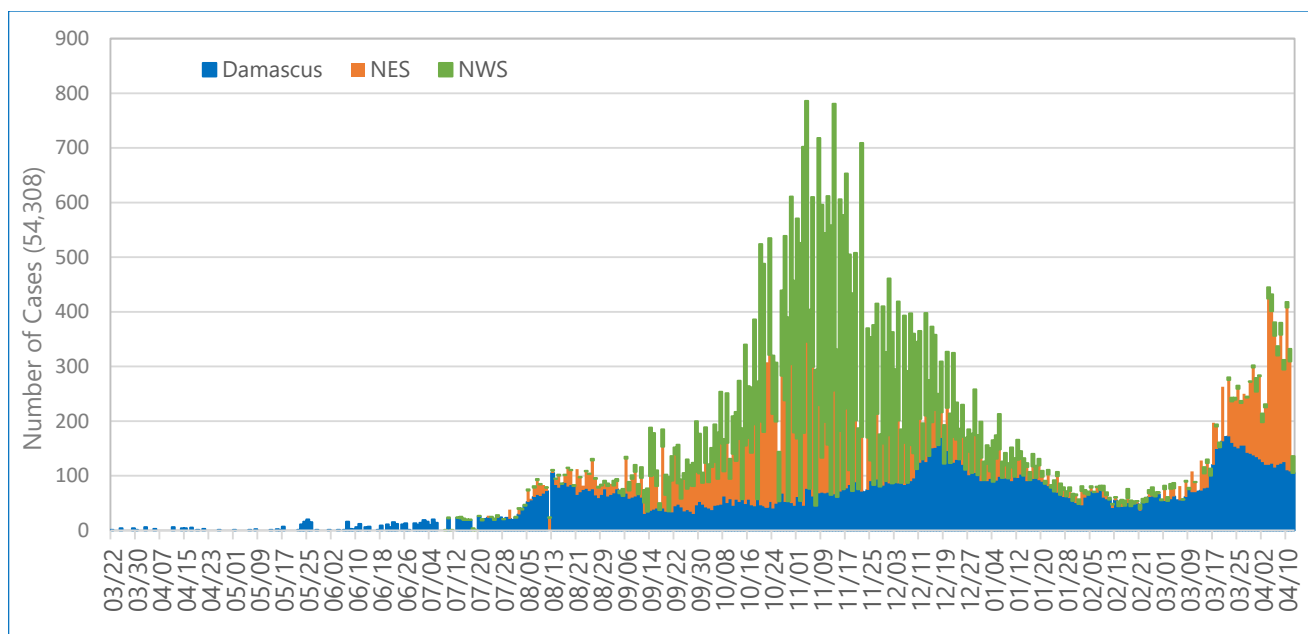
- ✓ *dashboard with key figures for whole of Syria*
- ✓ *detailed epidemiological update on COVID-19 outbreak in Syria and North East Syria*
- ✓ *daily and weekly distribution of COVID-19 cases and related deaths*
- ✓ *daily distribution of COVID-19 cases and rolling seven-day average per governorate in whole of Syria*
- ✓ *overall and cumulative weekly attack rate and rates in selected governorates in Syria*
- ✓ *number of COVID-19 testing laboratories and number of daily tested per 100,000 in Syria and North East Syria*
- ✓ *geographical distribution of COVID-19 attack rate (AR) per governorate in Syria*

Whole of Syria	Tested	Confirmed	Recovered	Dead
				
TOTAL	218,179	54,308	35,084	2,451
Syria	70,829	20,331	14,122	1,385
NES	32,508	12,437	1,378	428
NWS	114,842	21,540	19,584	638
	Tests/100,000	AR/100,000	Recovery Rate %	CFR%
	1,070	266	64.9%	3.0
TOTAL	37	3,626	1,096	839
Syria	21	1,832	828	602
NES	4	683	34	75
NWS	12	1,111	234	162

1. Whole of Syria (WoS)

Between 23 March 2020 and 13 April 2021, there were fifty-four-thousand-three-hundred-eight (**54,308**) COVID-19 cases¹ confirmed by rt-PCR. Out of the total number of cases, **39.6%** (**21,450/54,308**) were reported from North West Syria (NWS), **37.4%** (**20,331**) from Damascus, and the remaining **23.0%** (**12,437**) were reported from North East Syria (NES). During the same reporting period, a total of two-thousand-four-hundred-fifty-one (**2,451**) related deaths were reported, of them **56.5%** (**1,385/2,451**) from **Syria**, **26.0%** (**638**) from **NWS**, and **17.5%** (**428**) from **NES** - the overall Case Fatality Ratio (CFR)² is **3.0%**.

The figure below is showing the daily distribution of reported confirmed COVID-19 cases, 23 March – 13 April 2021, whole of Syria.



The following table is showing the reported number of cases, deaths, testing rate, positivity rate, attack rate and case fatality rate per governorate, 23 March 2020 – 13 April 2021, whole of Syria.

Governorate	# Test	Test/100,000	Positive	Positivity Rate	Attack Rate	# Deaths	CFR
As-Sweida	1,391	367	1023	73.5%	269.8	65	6.35%
Tartous	2,422	267	1,647	68.0%	181.7	172	10.44%
Homs	4,332	299	2,592	59.8%	178.6	249	9.61%
Ar-Raqqa	7,936	1,149	2,630	33.1%	380.7	38	1.44%
Hama	2,140	159	836	39.1%	62.3	40	4.78%
Aleppo	74,762	1,901	14,117	18.9%	358.9	464	3.29%
Dar'a	3,158	311	1,076	34.1%	106.0	48	4.46%
Deir-ez-Zor	1,615	218	511	31.7%	68.9	29	5.68%
Rural Damascus	8,207	260	2,137	26.1%	67.6	33	1.54%
Quneitra	1,799	1,742	397	22.1%	384.4	26	6.55%
Damascus	21,857	1,191	4,710	21.6%	256.6	434	9.21%
Lattakia	16,621	1,401	3,058	18.4%	257.7	161	5.26%
Al-Hasakeh	19,421	1,832	7,914	40.8%	746.4	290	3.66%
Idleb	52,518	2,029	11,660	22.2%	450.5	402	3.45%
Total	218,179	1,070	54,308	24.89%	266.3	2,451	4.51%

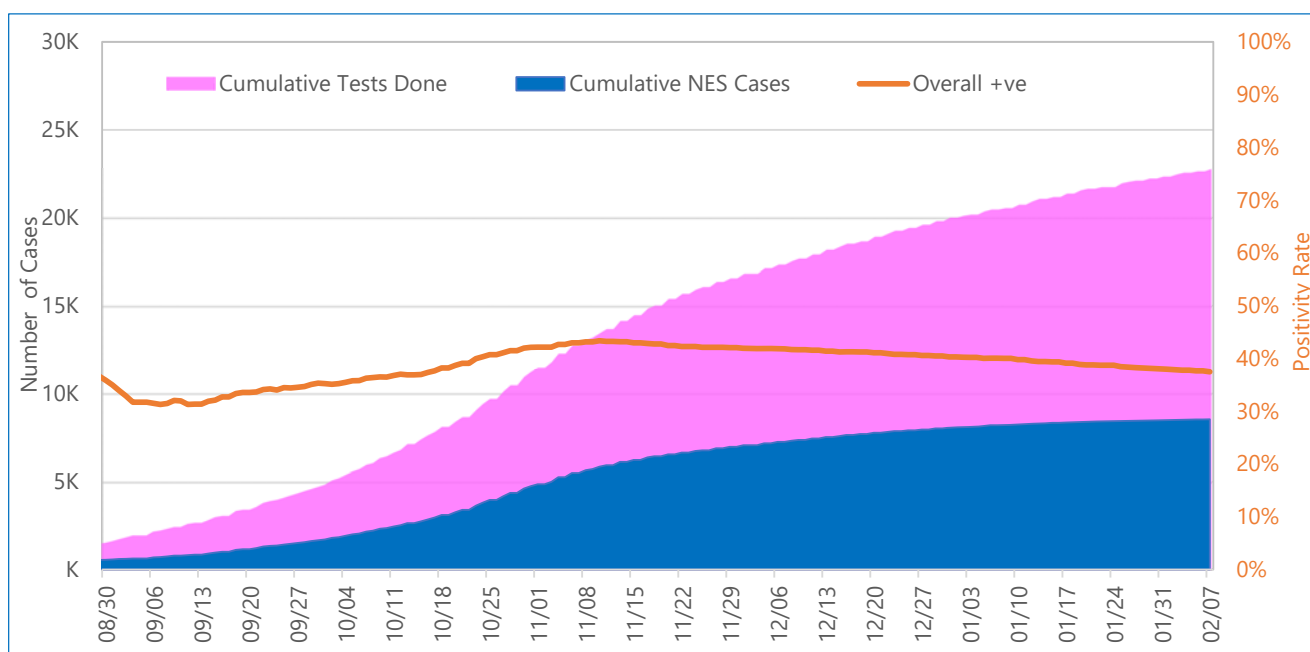
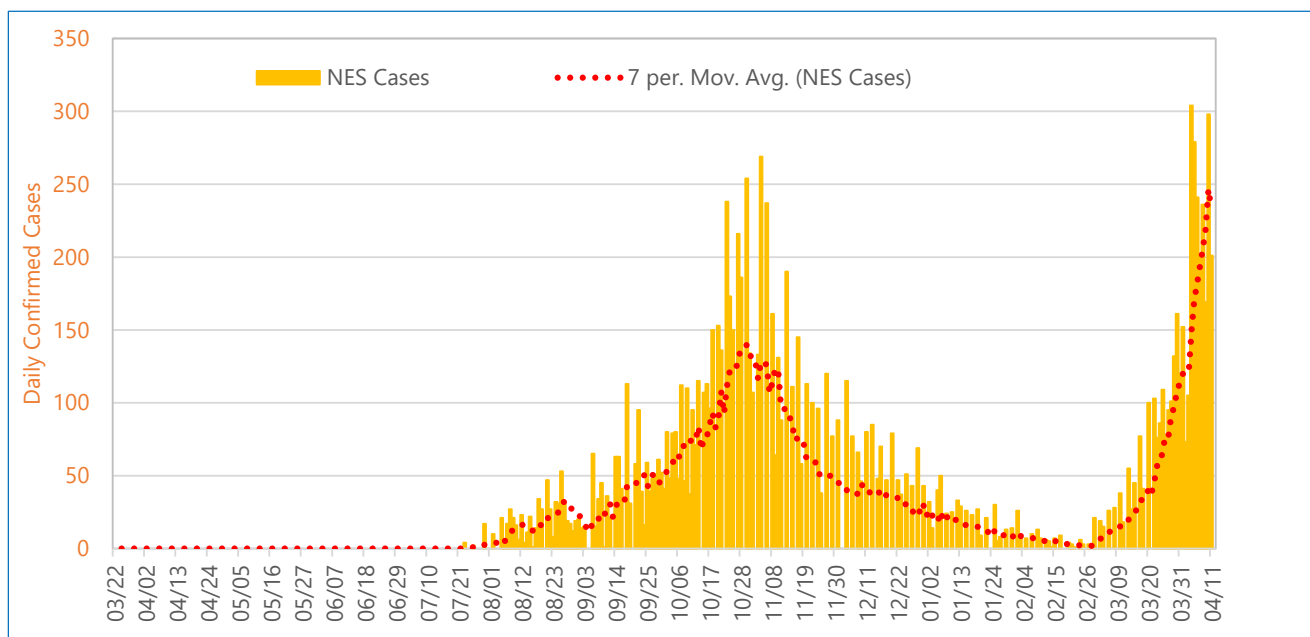
¹ WHO Syria COVID-19 Situation Reports present official counts of confirmed COVID-19 as announced by the MOH on the indicated date. Difference in data between the WHO reports and other sources can result from using different cutoff times for the aggregation and reporting of data. the total number of new cases in the country.

2. North East Syria (NES)

In North East Syria, between 23 July 2020 and 13 April 2021, there were twelve-thousand-four-hundred-thirty-seven (12,437) COVID-19 cases³ confirmed by rt-PCR, including four-hundred-twenty-eight (428) related deaths. Case Fatality Ratio (CFR) is 3.5%.

During the same period, a total of 32,508 COVID-19 tests were conducted with the overall positivity rate of 38.3%. According to available data, health workers are representing 6.9% (8754) among the total number of reported cases.

The figures below are showing the daily distribution of reported confirmed COVID-19 cases, cumulative number of samples tested and positivity rate, 23 March 2020 – 13 April 2021, North East Syria (NES).

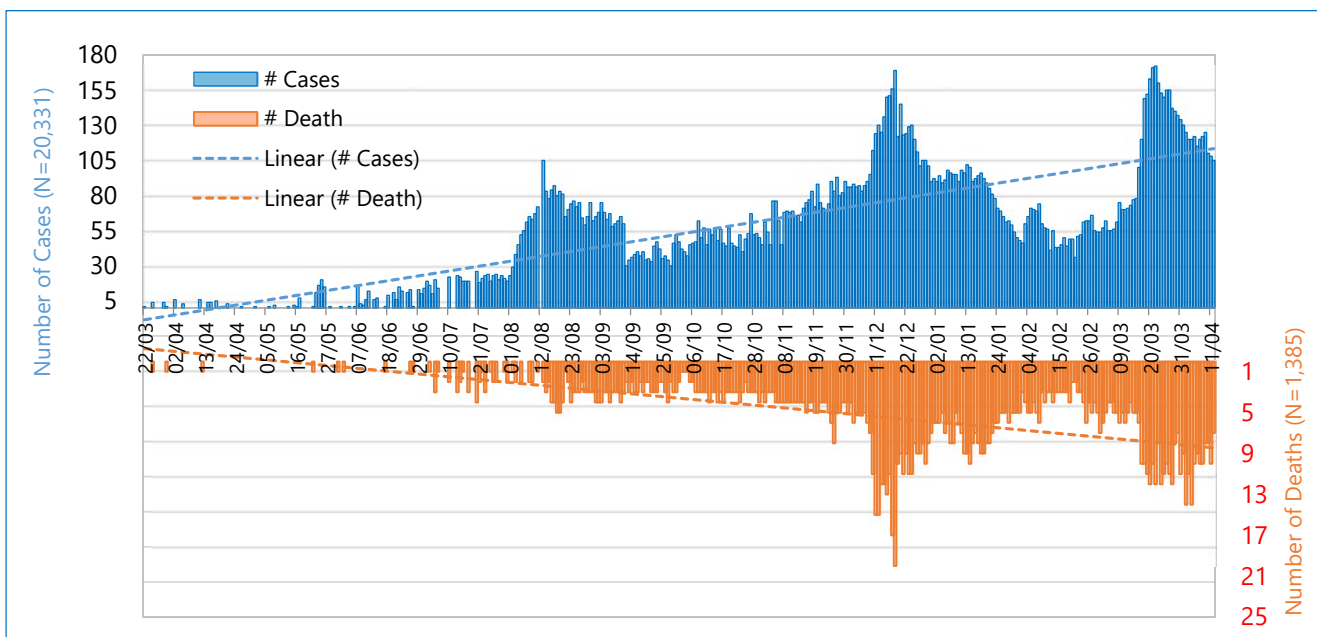
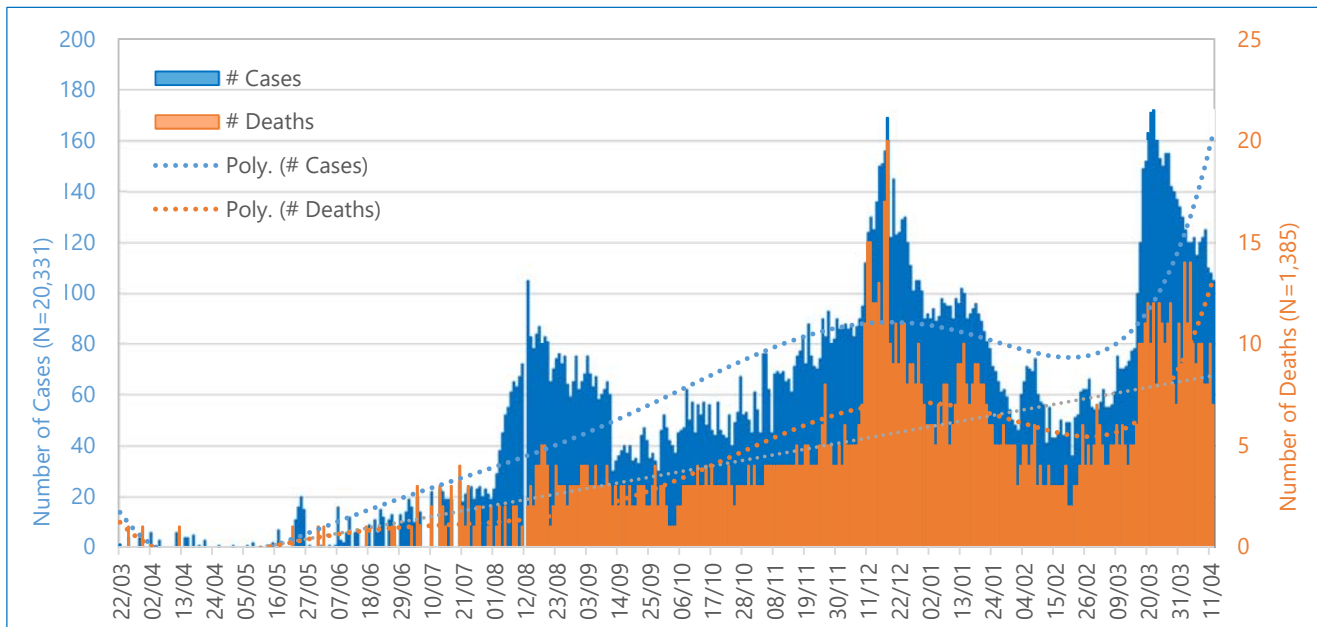


³ WHO Syria COVID-19 Situation Reports present official counts of confirmed COVID-19 as announced by the MOH on the indicated date. Difference in data between the WHO reports and other sources can result from using different cutoff times for the aggregation and reporting of the total number of new cases in the country.

3. Syria

Between 23 March 2020 and 13 April 2021, MOH there were twenty-thousand-three-hundred-thirty-one (20,331) COVID-19 cases⁴ confirmed by rt-PCR, including one-thousand-three-hundred-eighty-five (1,385) related deaths. Case Fatality Ratio (CFR)⁵ is 6.8%. In the epidemiological for weeks (11-14) of 2021 in comparison to the previous epidemiological four weeks (7-10), the number of new COVID-19 cases increased by 145% (3,708 and 1.512 respectively) and in the same period the number of death cases increased by 130% (274 and 119 respectively).

The figures below are showing the daily and weekly distribution of reported confirmed COVID-19 cases and deaths, 23 March 2020 – 13 April 2021, Syria.

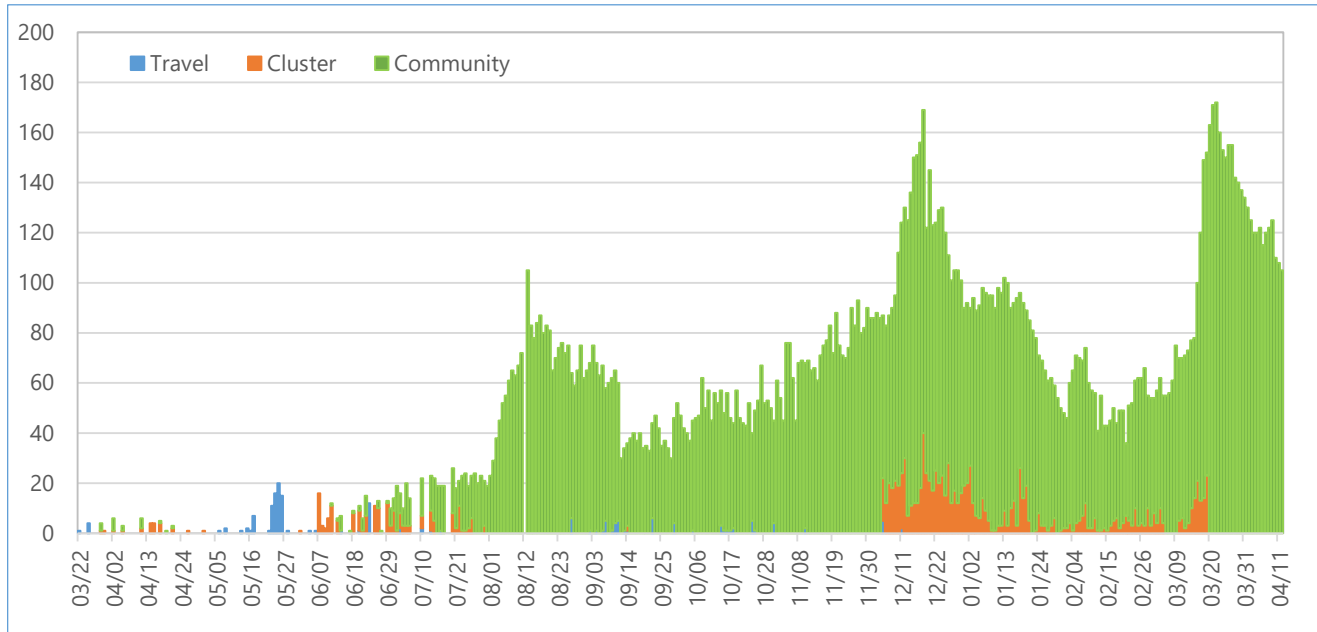


⁴ WHO Syria COVID-19 Situation Reports present official counts of confirmed COVID-19 as announced by the MOH on the indicated date. Difference in data between the WHO reports and other sources can result from using different cutoff times for the aggregation and reporting of the total number of new cases in the country.

⁵ CFR is not same as Infection fatality ratio (IFR) which is the proportion of individuals diagnosed with a disease who die from that disease and is therefore a measure of severity among detected cases, Estimating mortality from COVID-19, WHO scientific brief, 4 August 2020. <https://www.who.int/publications/i/item/WHO-2019-nCoV-Sci-Brief-Mortality-2020>.

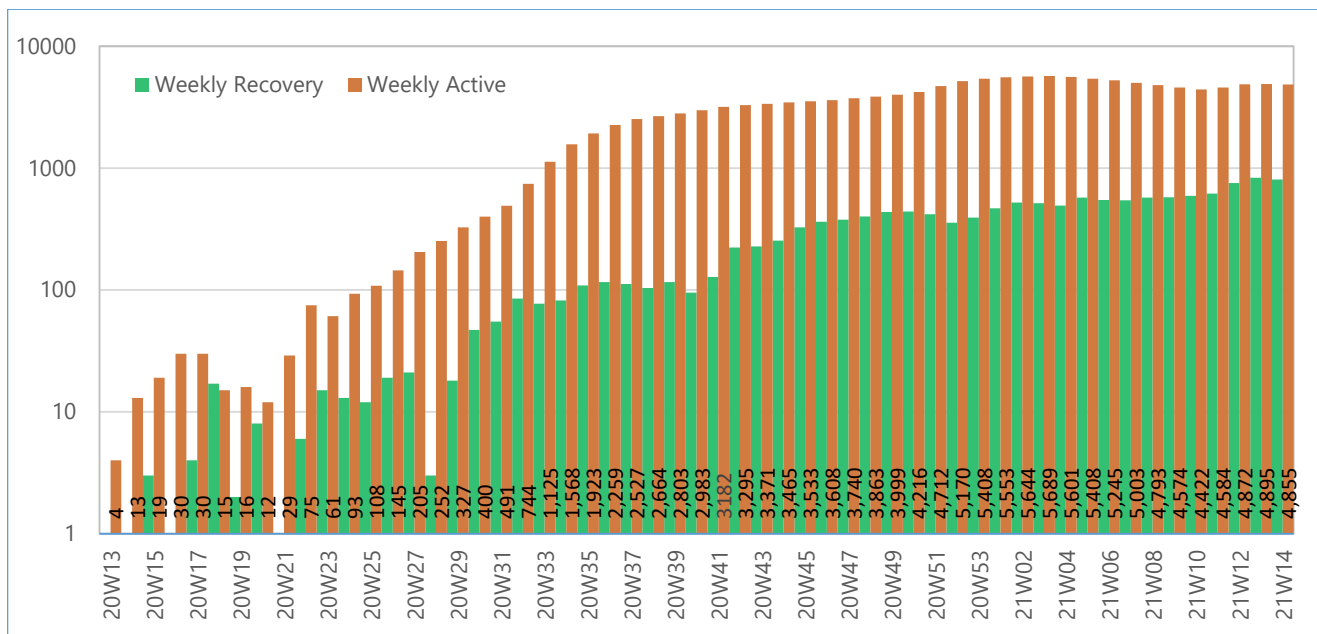
As of 13 April 2021, information on the mode of transmission was available on **100%** of confirmed reported COVID-19 cases (**20,331/20,331**). Of all cases, **93.2%** (18,955) were community transmission, **5.9%** (1,207) - contacts of confirmed cases (cluster) and **1.0%** (169) were imported cases.

The figure below is showing the mode of transmission of the reported confirmed COVID-19 cases, 23 March 2020 – 13 April 2021, Syria.



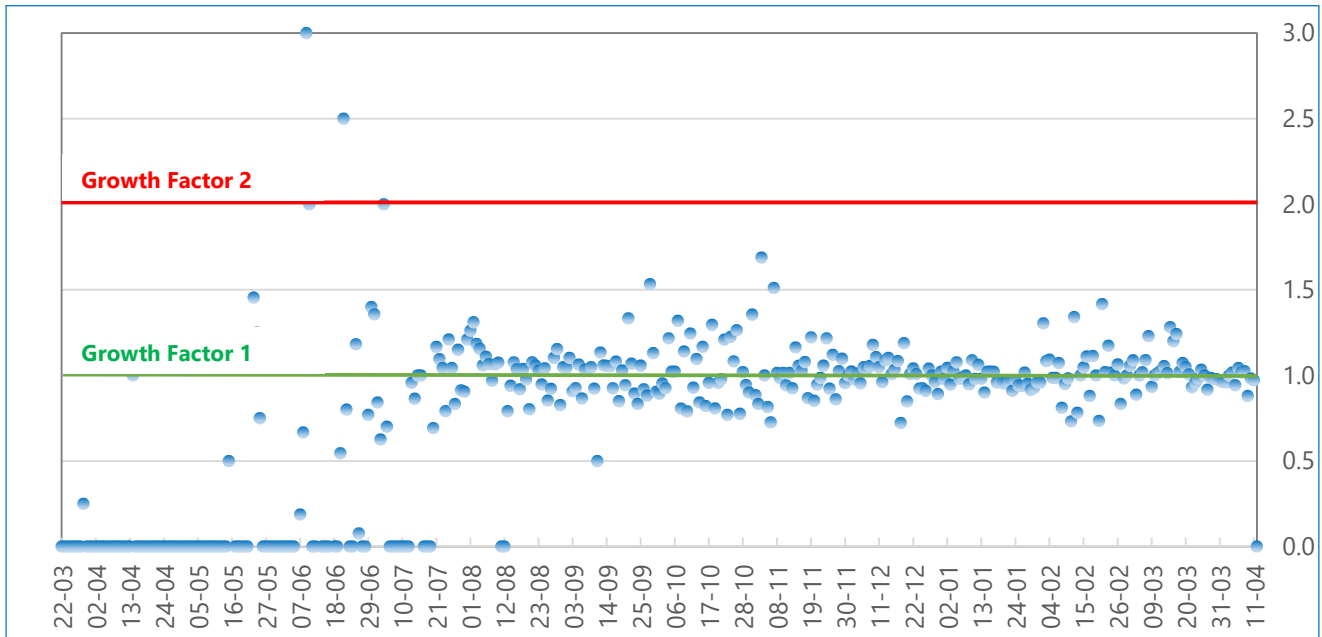
In the epidemiological week 14, 2021, the number of COVID-19 weekly recovery decreased by **3.5%**, in comparison to the previous week (**4,855** and **4,895**) and at the same time, the number of **active** COVID-19 cases decreased by **0.8%** (**805** and **833** respectively).

The figure below is showing the weekly outcomes of the reported confirmed COVID-19 cases, 23 March 2020 – 13 April 2021, Syria.



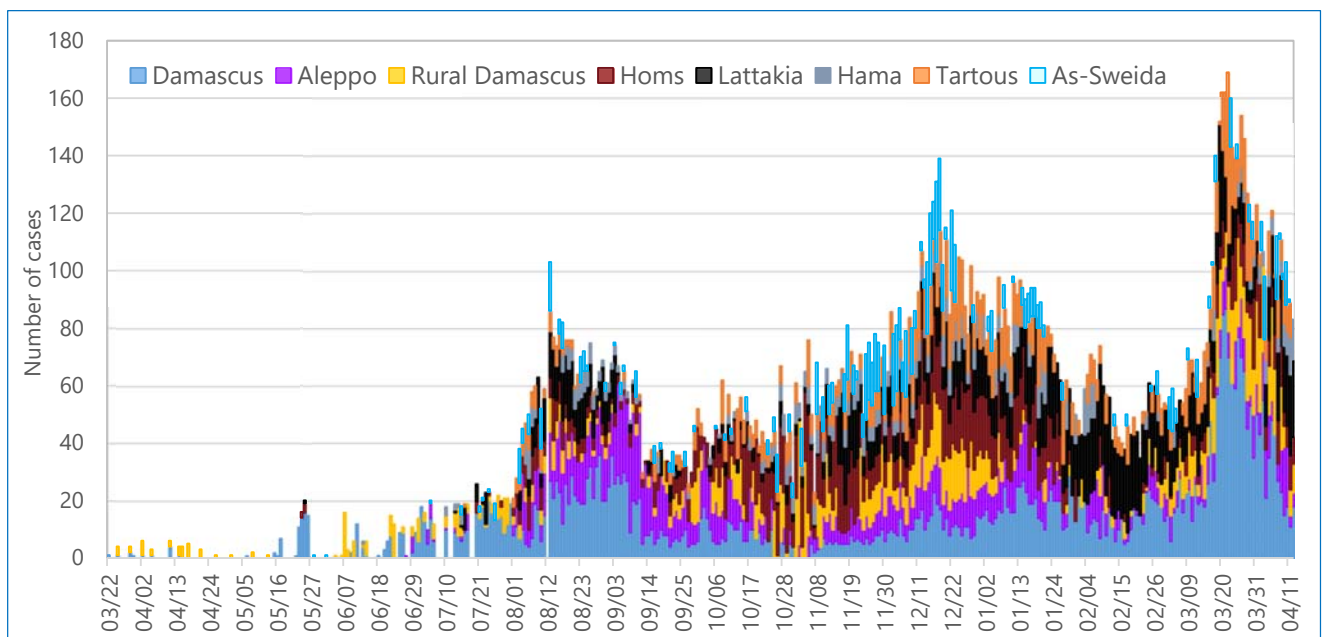
Growth factor (every day's new cases / new cases on the previous day) between **0** and **1** indicates a decline; when it is above 1 it signals an increase, and if it is persistently above 1 this could signify exponential growth.

The figure below is showing the Growth Factor of daily confirmed COVID-19 cases, 23 March 2020 – 13 April 2021, Syria.

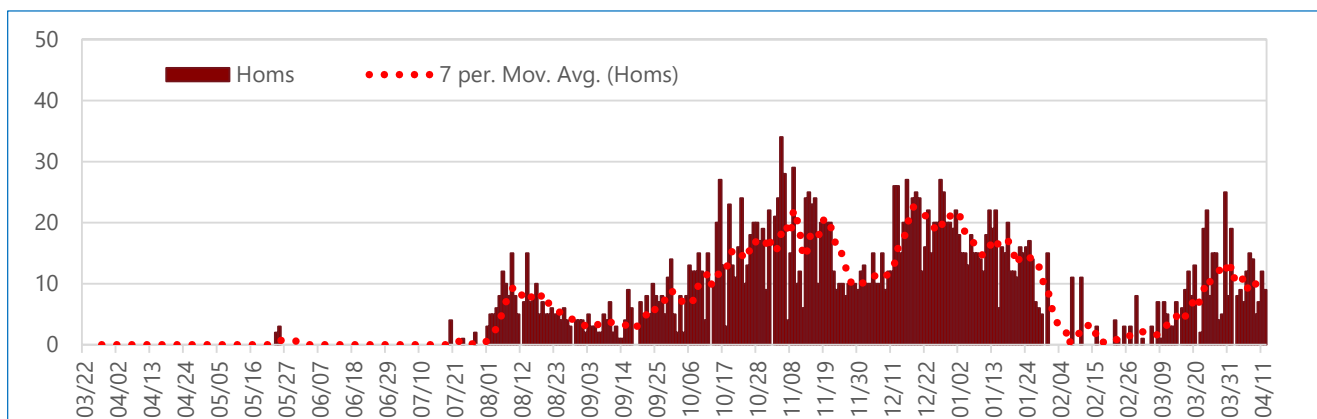
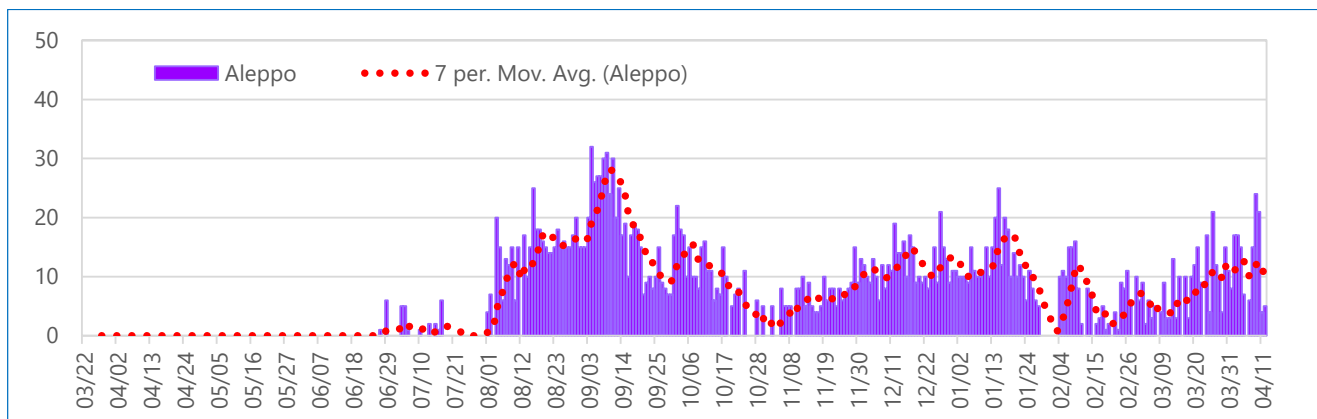
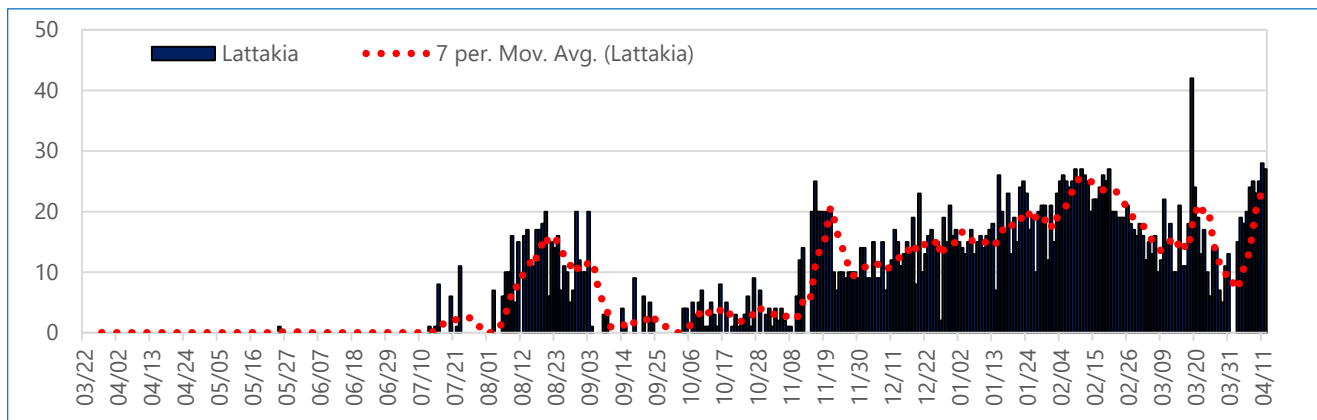
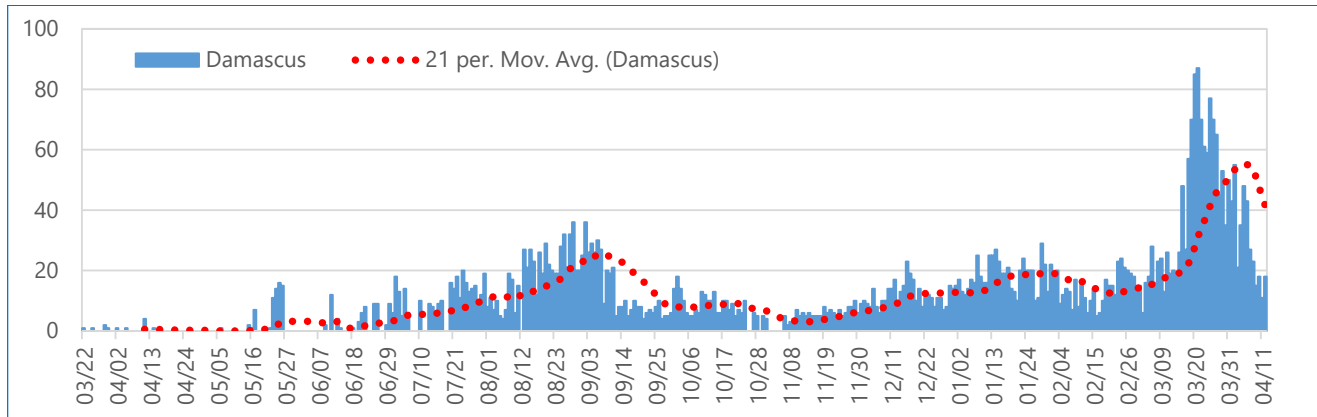


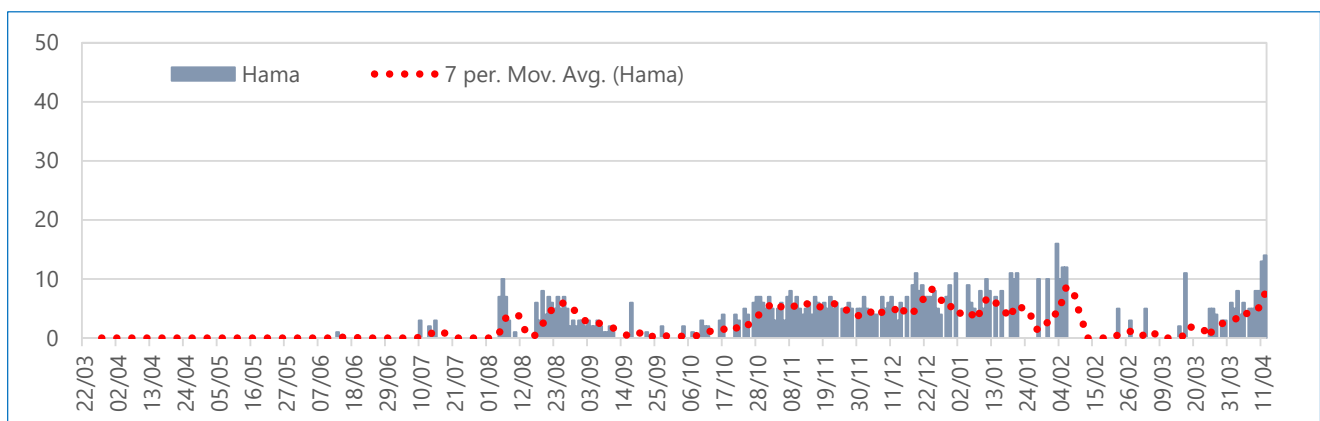
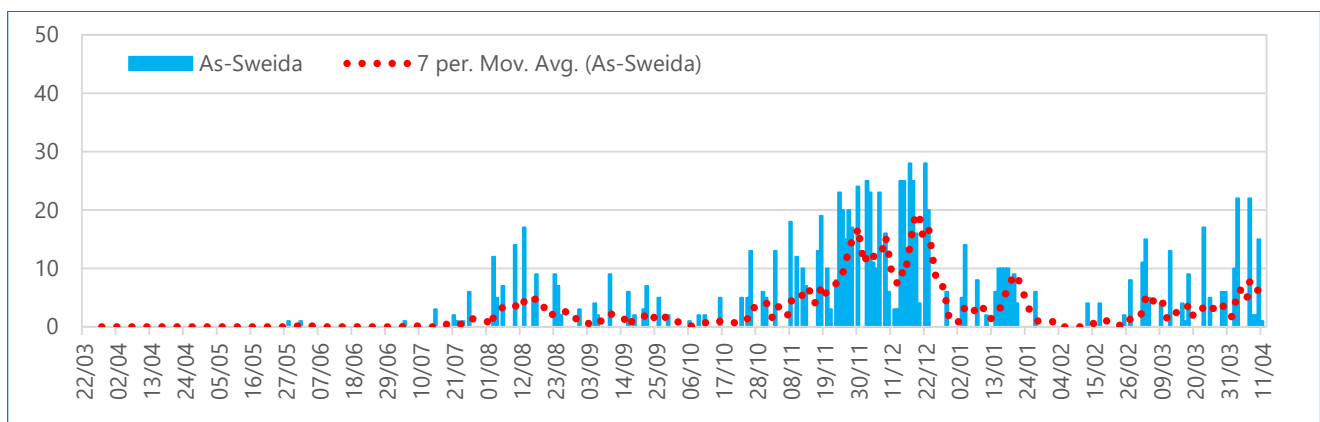
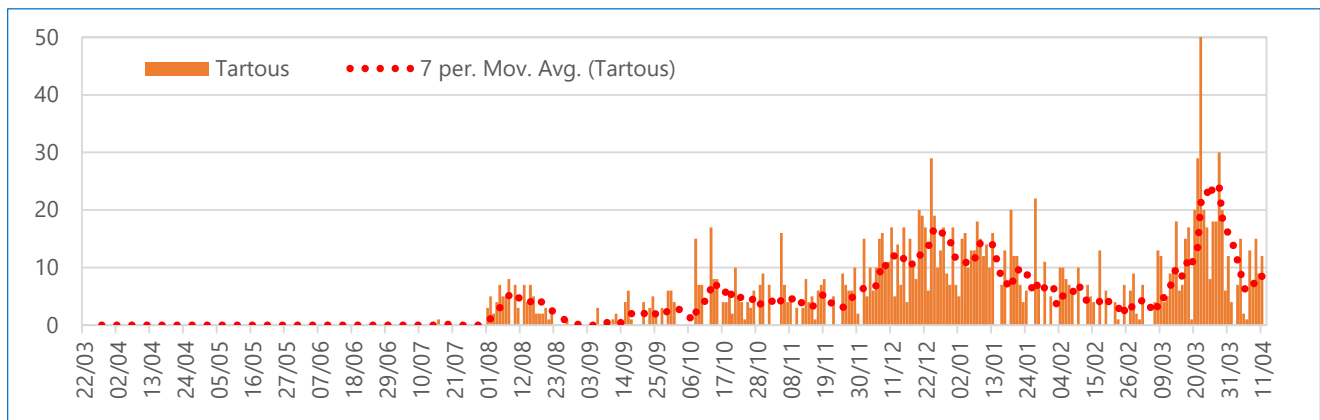
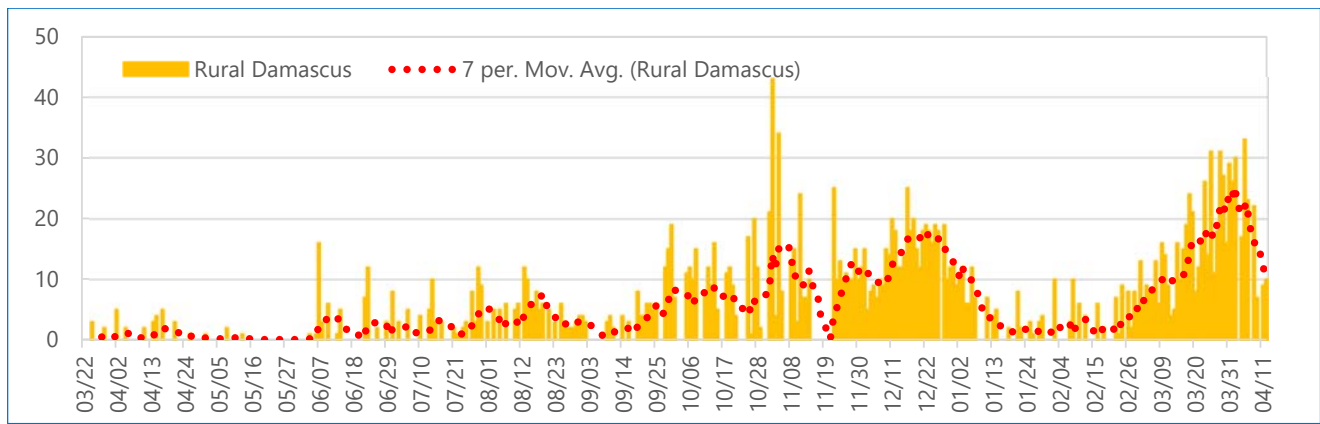
As of 13 April 2021, geographical distribution of confirmed reported COVID-19 cases was available on **100%** of cases (**20,331/20,331**). Of all cases, **23.5%** (**4,710**) reported from the **Damascus** governorate, followed by **15.3%** (**2,592**) from **Lattakia**, then **Aleppo - 13.3%** (2,667); **Homs- 13.0%** (2,592); **Rural Damascus - 10.7%** (2,137); **Tartous - 8.2%** (1,647); **Dar'a - 5.4%** (1,076); **As-Sweida; - 5.1%** (1,023); **Hama - 4.2%** (836); **Quneitra - 2.0%** (397), and the remaining **0.6%**. **0.3%** and **0.1%** are form **Deir-ez-Zor, Al-Hasakeh**, and **Ar-Raqqa** governorates, respectively.

The figure below is showing the daily distribution of reported confirmed COVID-19 cases per selected governorate, 23 March 2020 – 13 April 2021, Syria.



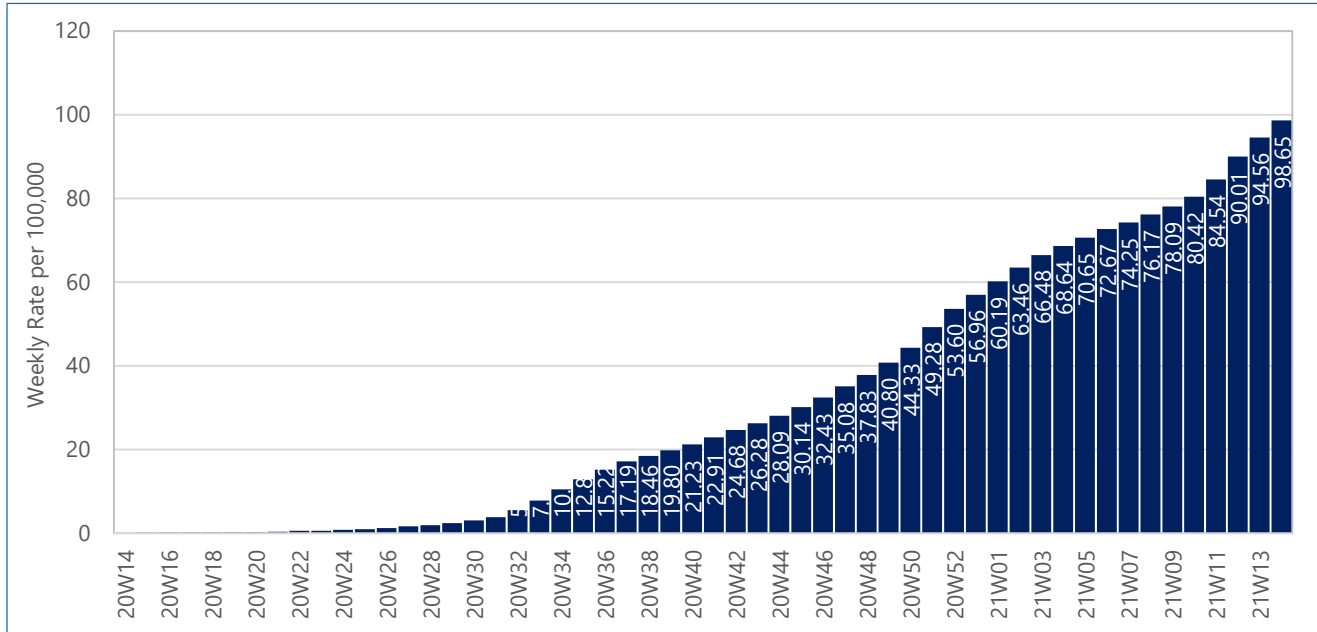
The figures below are showing the daily distribution of reported confirmed COVID-19 cases and rolling seven-day average in selected governorates, 23 March 2020 – 13 April 2021, Syria.





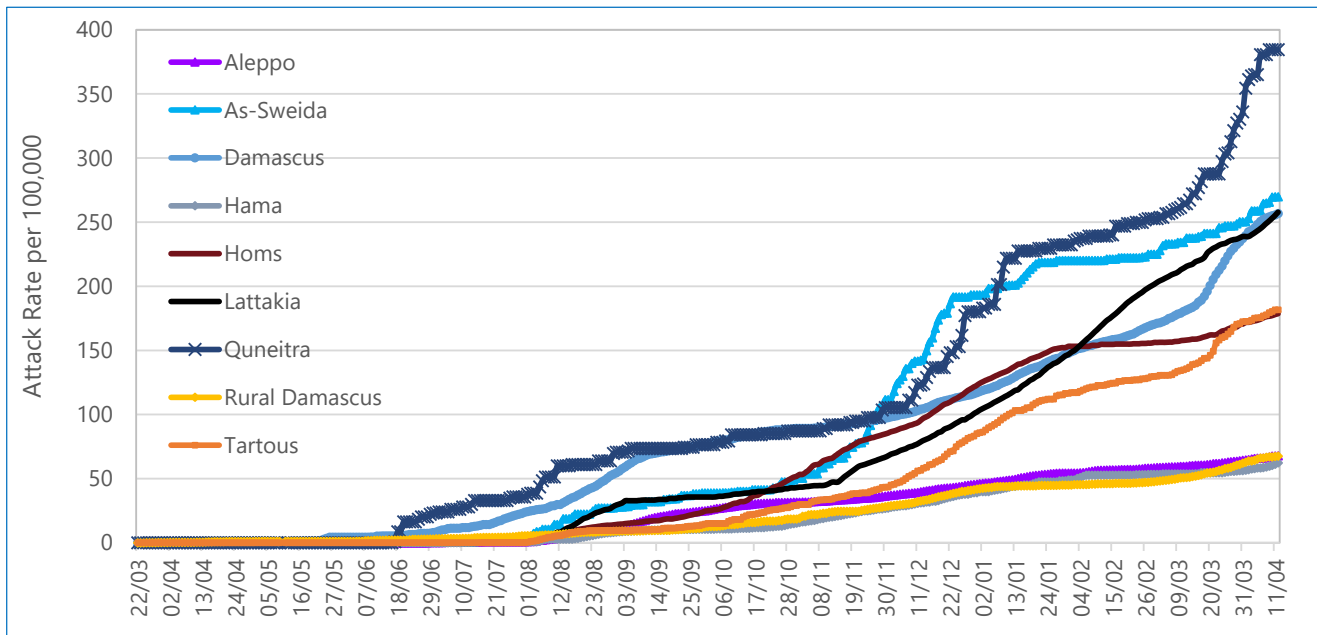
As of 13 April 2021, the overall attack rate (AR) in Syria is **266** per 100,000 and **100%** (13/13) of governorates, with the total population of 20,393,662 people, have reported confirmed COVID-19 cases. In the epidemiological week 14/2021, COVID-19 weekly AR increased by **4.3%** in comparison to the previous week (98.65 and 94.56) respectively.

The figure below is showing the weekly COVID-19 attack rate (AR) per 100,000, 23 March 2020 – 13 April 2021, Syria.



The highest AR is reported from **Quneitra (384.43/100,000)** followed **As-Sweida** by governorate (**269.80/1,000,000**), **Lattakia** governorate (**257.73/100,000**), **Damascus** governorate (**256.62/100,000**), **Homs** governorate (**178.63/100,000**), **Tartous** governorate (**181.72/100,000**), **Dar'a** governorate (**105.98/100,000**), **Aleppo** governorate (**67.81/100,100**), **Rural Damascus** (**67.62/100,000**), **Hama** governorate (**62.29/100,000**), **Deir-ez-Zor** governorate (**15.92/100.000**), **Al-Hasakeh** governorate (**5.94/100,000**), and the lowest rate (**1.01/100,000**) in **Ar-Raqqa** governorate.

The following figure is showing the COVID-19 attack rate per 100,000 population in selected governorates, 23 March 2020 – 13 April 2021, Syria.

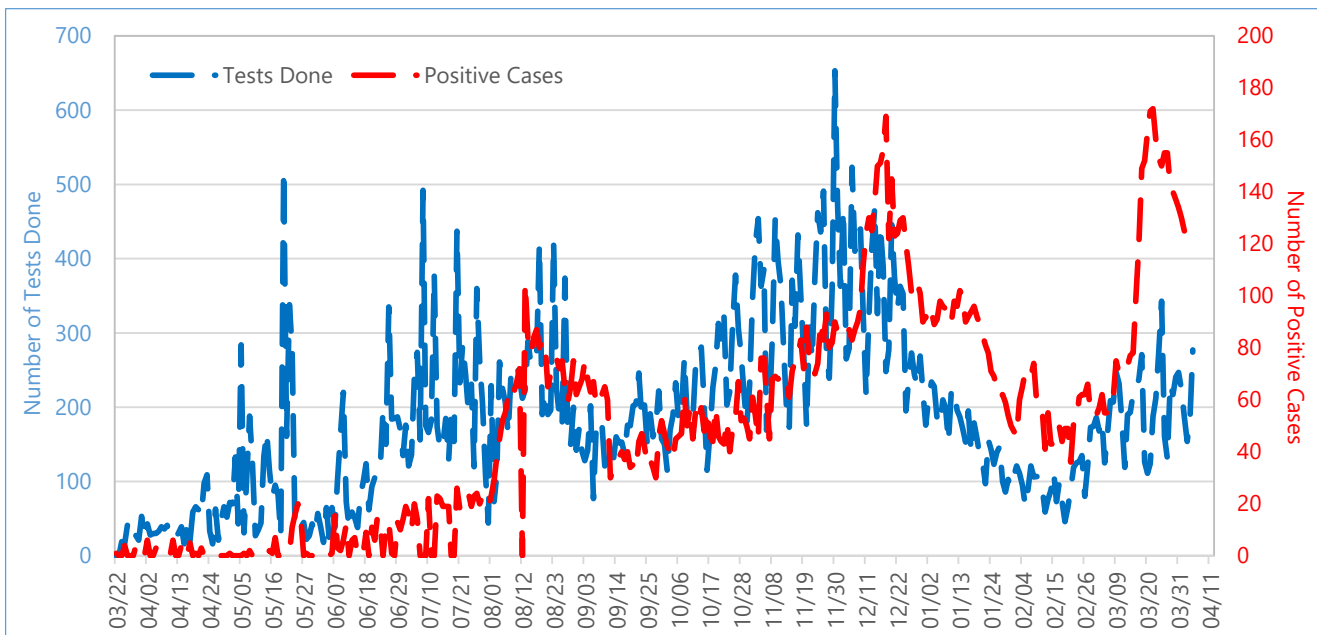
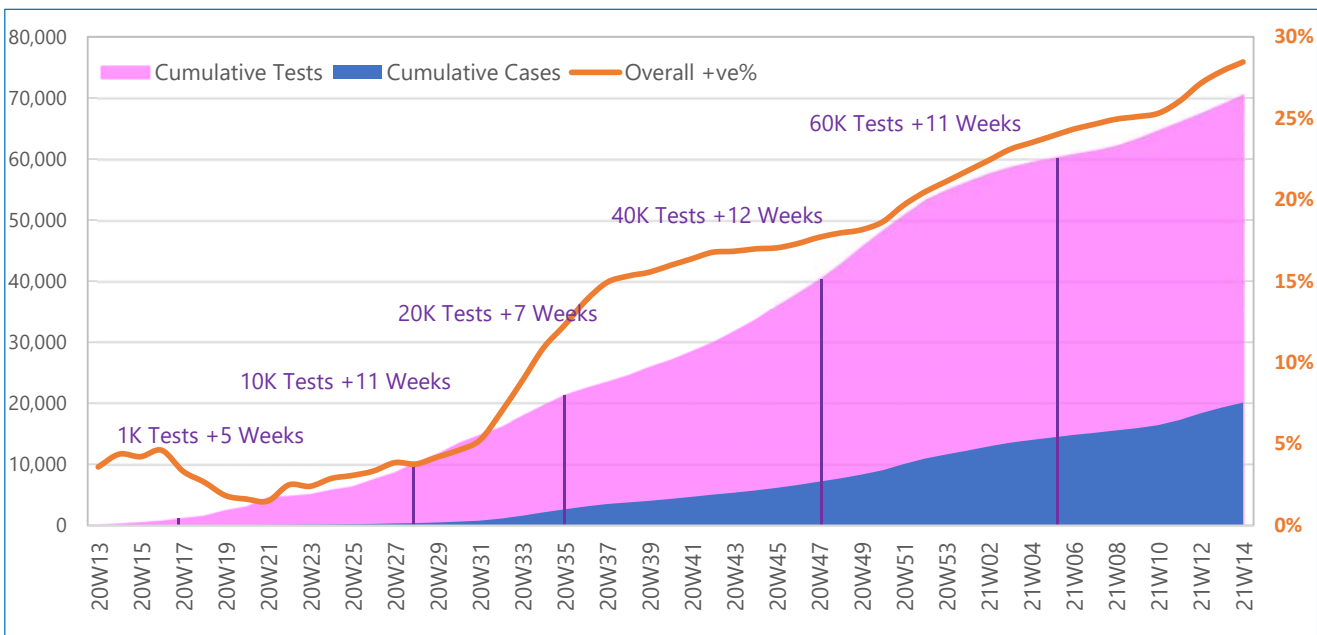


As of 13 April 2021, there are 24 functional RPC machines in 14 COVID-19 laboratories, out of them 8 COVID-19 laboratories (12 PCR machines) in Syria, 3 laboratories (7 PCR machines) in NWS and 2 laboratories (5 PRC machines) in NES.

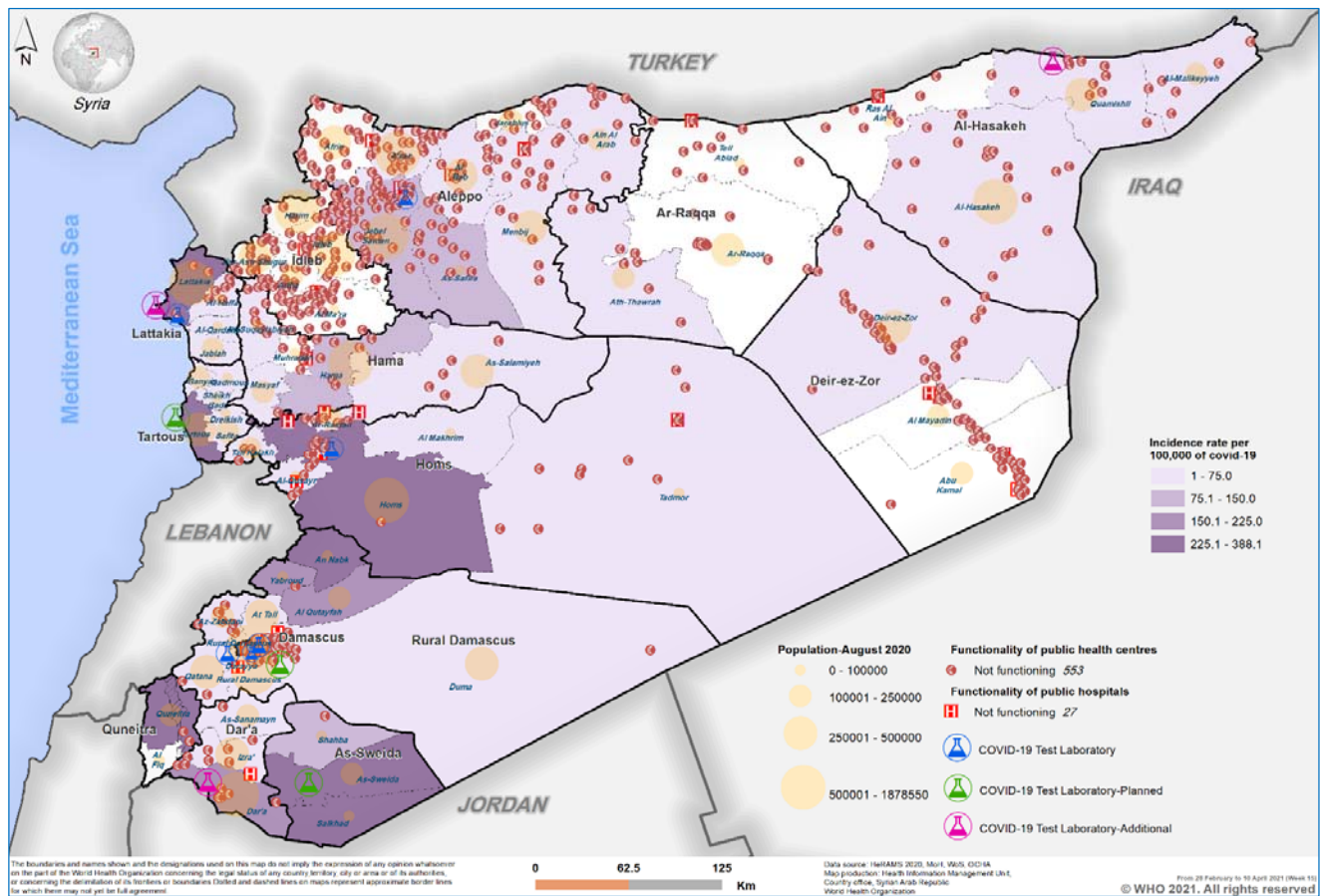
Between 23 March 2020 and 13 April 2021, a total of **218,179** COVID-19 tests with the overall positivity rate of **24.9%** and with overall testing rate of **1,070/100,000** in **whole of Syria**. Out of them **52.6%** (**114,842/218,179**) tested in **NWS**, **32.5%** (**70,829**) in **Syria** and **14.9%** (**32,508**) in NES.

The overall positivity rate of all **70,829** COVID-19 tests conducted in **Syria** (23 March 2020 - 13 April 2021) was **28.7%**. Since the beginning of COVID-19 testing in Syria, the first 1,000 tests were conducted in 5 weeks, reaching 5,000 tests in 6 weeks, 10,000 tests in 5 weeks, 20,000 tests in 6 weeks, 40,000 tests in 13 weeks, 50,000 tests in 12 weeks and 60,000 in 11 weeks. The analysis of data on the two variables (weekly number of tests and number of confirmed cases) in Syria showed correlation coefficient (**R**) between the two variables as **0.510**.

The graphs below are showing the cumulative number of Samples tested and Positivity rate, 23 March 2020 – 01 March 2021, Syria.



The map below is showing COVID-19 Attack Rate (AR) by governorates and the location of COVID-19 laboratories, 23 March 2020 – 13 April 2021, Syria.



4. Useful COVID-19 links:

WHO Syria, COVID-19 Dashboard (English):

<https://app.powerbi.com/view?r=eyJrIjojNmY5OGYzNDYtNjZhMy00MWlyLWlyMzctYzYzC4MmI3ZDNIODk5IiwidCI6ImY2MTBjMGI3LWJkMjQ0NGZlOS04MTBiLTNkYzI4MGFmYjU5MCIslmMiOjh9>

WHO Syria, COVID-19 Dashboard (Arabic):

<https://app.powerbi.com/view?r=eyJrIjojNTA0NWxZmYtMDJiMC00ZDU0LTllNTktZTViZjYwYThjZmUzIiwidCI6ImY2MTBjMGI3LWJkMjQ0NGZlOS04MTBiLTNkYzI4MGFmYjU5MCIslmMiOjh9>

COVID-19 situation in EMRO Region reports: <http://www.emro.who.int/health-topics/corona-virus/index.html>

Latest global WHO Weekly operational update on COVID-19 - 12 April 2021:

<https://www.who.int/publications/m/item/weekly-operational-update-on-covid-19---12-april-2021>

WHO COVID-19 Vaccines: <https://www.who.int/emergencies/diseases/novel-coronavirus-2019/covid-19-vaccines>

WHO COVID-19 Country and Technical Guidance: <https://www.who.int/emergencies/diseases/novel-coronavirus-2019/technical-guidance>

WHO COVID-19 Online Training: <https://openwho.org/channels/covid-19>.