

Saudi Arabia



Tuberculosis

Population 2010 (millions) 27

| Estimates of burden * 2010 | Number (thousands) | Rate (per 100 000 pop) |
|-------------------------------|--------------------|------------------------|
| Mortality (excluding HIV) | 0.39 (0.33–0.46) | 1.4 (1.2–1.7) |
| Prevalence (incl HIV) | 6.6 (2.4–11) | 24 (8.7–41) |
| Incidence (incl HIV) | 5 (4.4–5.7) | 18 (16–21) |
| Incidence (HIV-positive) | 0.12 (0.091–0.15) | 0.44 (0.33–0.56) |
| Case detection, all forms (%) | 88 (78–100) | |

Case notifications 2010

| New cases | (%) Retreatment cases | (%) |
|------------------|-----------------------|-----------------------|
| Smear-positive | 2 302 (54) | 122 (59) |
| Smear-negative | 687 (16) | 20 (10) |
| Smear unknown | 0 (0) | 64 (31) |
| Extrapulmonary | 1 311 (30) | 0 (0) |
| Other | 0 (0) | |
| Total new | 4 300 | Total retreatment 206 |
| Total < 15 years | 181 | |

| | | |
|-----------------------|-------|----------------|
| Total new and relapse | 4 422 | (97% of total) |
| Total cases notified | 4 549 | |

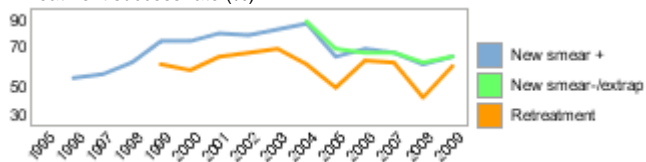
Drug regimens

| | |
|---|-----|
| Rifampicin used throughout treatment | Yes |
| % of patients treated with fixed-dose combinations (FDCs) | 0 |
| Paediatric formulations procured | No |

Treatment success rate 2009 (%)

| | |
|-----------------------------------|----|
| New smear-positive | 65 |
| New smear-negative/extrapulmonary | 65 |
| Retreatment | 60 |

Treatment success rate (%)



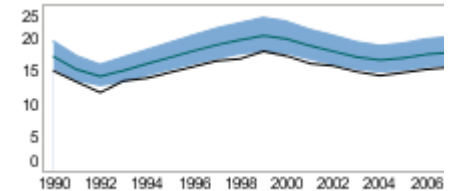
MDR-TB, Estimates among notified cases *

| | |
|--|----------------|
| % of new TB cases with MDR-TB | 1.2 (0.70–1.6) |
| % of retreatment TB cases with MDR-TB | 9.0 (5.6–12) |
| Estimated MDR-TB cases among new pulmonary TB cases notified in 2010 | 36 (21–48) |
| Estimated MDR-TB cases among retreated pulmonary TB cases notified in 2010 | 19 (12–26) |

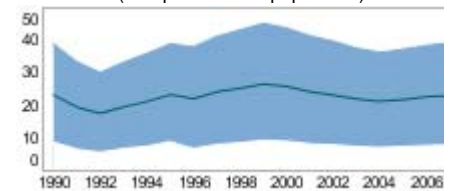
| MDR-TB reported cases 2010 | New | Retreat-ment | Total |
|-----------------------------------|-----|--------------|-------|
| Cases tested for MDR-TB | | | |
| % of notified tested for MDR-TB | | | |
| Confirmed cases of MDR-TB | | | 14 |
| MDR-TB patients started treatment | | | 0 |

| Laboratories | 2009 | 2010 | 2011 |
|------------------------------------|------|------|------|
| Smear (per 100 000 population) | 1.2 | 1.2 | 1.1 |
| Culture (per 5 million population) | 1.9 | 1.8 | 1.8 |
| DST (per 5 million population) | 1.9 | 1.8 | 1.8 |

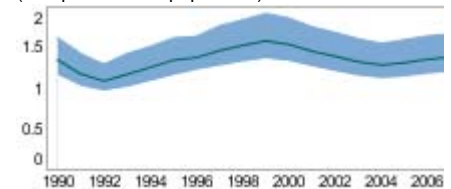
Incidence (HIV+TB in orange), notifications (black) (rates per 100 000 population)



Prevalence (rate per 100 000 population)



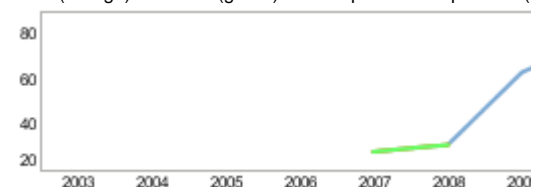
Mortality excluding HIV (rate per 100 000 population)



TB/HIV 2010

| | |
|---|--|
| TB patients with known HIV status | |
| % of TB patients with known HIV status | |
| TB patients that are HIV-positive | |
| % of tested TB patients that are HIV-positive | |
| % HIV-positive TB patients started on CPT | |
| % HIV-positive TB patients started on ART | |
| HIV-positive people screened for TB | |
| HIV-positive people provided with IPT | |

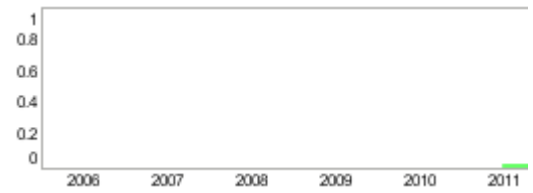
CPT (orange) and ART (green) for HIV-positive TB patients (



Financing 2011

| | |
|--|---|
| Total budget (US\$ millions) | |
| Available funding (US\$ millions) | 0 |
| % of budget funded | |
| % available funding from domestic sources | |
| % available funding from Global Fund | |
| NTP Budget (blue) and available funding (green) (US\$ million) | |

| | |
|-------------------------------|-----|
| Second-line DST available | No |
| National Reference Laboratory | Yes |



* Ranges represent uncertainty intervals

Generated: August 28, 2011