

## Qatar



## Tuberculosis

Population 2010 (millions) 2

| Estimates of burden * 2010    | Number (thousands)  | Rate (per 100 000 pop) |
|-------------------------------|---------------------|------------------------|
| Mortality (excluding HIV)     | 0.037 (0.033–0.044) | 2.1 (1.9–2.5)          |
| Prevalence (incl HIV)         | 0.79 (0.21–1.4)     | 45 (12–77)             |
| Incidence (incl HIV)          | 0.67 (0.58–0.75)    | 38 (33–43)             |
| Incidence (HIV-positive)      |                     |                        |
| Case detection, all forms (%) | 87 (77–100)         |                        |

## Case notifications 2010

| New cases        | (%) Retreatment cases            | (%)                 |
|------------------|----------------------------------|---------------------|
| Smear-positive   | 223 (38) Relapse                 | 0                   |
| Smear-negative   | 101 (17) Treatment after failure | 0                   |
| Smear unknown    | 0 (0) Treatment after default    | 0                   |
| Extrapulmonary   | 256 (44) Other                   | 0                   |
| Other            | 0 (0)                            |                     |
| Total new        | 580                              | Total retreatment 0 |
| Total < 15 years | 2                                |                     |

|                       |     |                 |
|-----------------------|-----|-----------------|
| Total new and relapse | 580 | (100% of total) |
| Total cases notified  | 580 |                 |

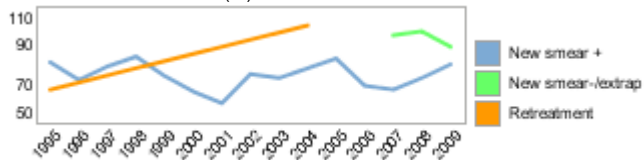
## Drug regimens

|   |     |
|---|-----|
| Rifampicin used throughout treatment                      | Yes |
| % of patients treated with fixed-dose combinations (FDCs) | 100 |
| Paediatric formulations procured                          | Yes |

## Treatment success rate 2009 (%)

|                                   |    |
|-----------------------------------|----|
| New smear-positive                | 80 |
| New smear-negative/extrapulmonary | 89 |
| Retreatment                       |    |

## Treatment success rate (%)



## MDR-TB, Estimates among notified cases \*

|                                       |                |
|---------------------------------------|----------------|
| % of new TB cases with MDR-TB         | 1.2 (0.30–3.1) |
| % of retreatment TB cases with MDR-TB |                |

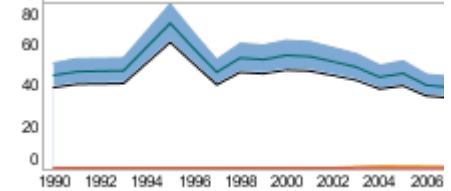
Estimated MDR-TB cases among new pulmonary TB cases notified in 2010

Estimated MDR-TB cases among retreated pulmonary TB cases notified in 2010

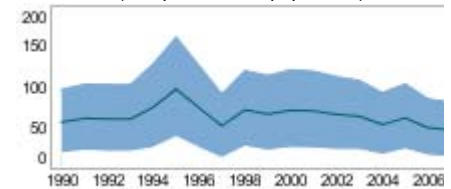
| MDR-TB reported cases 2010        | New | Retreat-ment | Total |
|-----------------------------------|-----|--------------|-------|
| Cases tested for MDR-TB           | 324 | 0            | 324   |
| % of notified tested for MDR-TB   | 56  |              | 56    |
| Confirmed cases of MDR-TB         | 4   | 0            | 4     |
| MDR-TB patients started treatment |     |              | 4     |

| Laboratories                       | 2009 | 2010 | 2011 |
|------------------------------------|------|------|------|
| Smear (per 100 000 population)     | <0.1 | <0.1 | <0.1 |
| Culture (per 5 million population) | 3.1  | 2.8  | 2.7  |
| DST (per 5 million population)     | 3.1  | 2.8  | 2.7  |

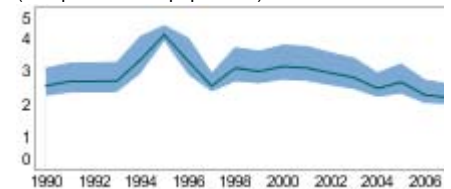
Incidence (HIV+TB in orange), notifications (black) (rates per 100 000 population)



Prevalence (rate per 100 000 population)

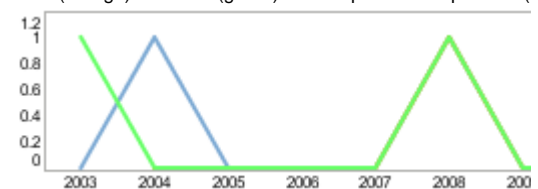


Mortality excluding HIV (rate per 100 000 population)



## TB/HIV 2010

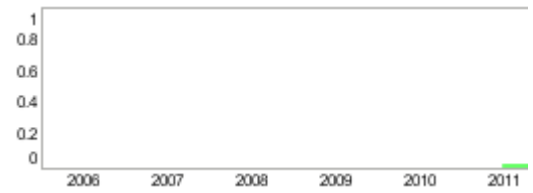
|   |  |
|---|--|
| TB patients with known HIV status                           |  |
| % of TB patients with known HIV status                      |  |
| TB patients that are HIV-positive                           |  |
| % of tested TB patients that are HIV-positive               |  |
| % HIV-positive TB patients started on CPT                   |  |
| % HIV-positive TB patients started on ART                   |  |
| HIV-positive people screened for TB                         |  |
| HIV-positive people provided with IPT                       |  |
| CPT (orange) and ART (green) for HIV-positive TB patients ( |  |



## Financing 2011

|  |   |
|--|---|
| Total budget (US\$ millions)                                   |   |
| Available funding (US\$ millions)                              | 0 |
| % of budget funded   |   |
| % available funding from domestic sources                      |   |
| % available funding from Global Fund                           |   |
| NTP Budget (blue) and available funding (green) (US\$ million) |   |

|                               |                        |
|-------------------------------|------------------------|
| Second-line DST available     | In and outside country |
| National Reference Laboratory | Yes                    |



\* Ranges represent uncertainty intervals

Generated: August 28, 2011