

## Lebanon



## Tuberculosis

Population 2010 (millions) 4

Estimates of burden * 2010	Number (thousands)	Rate (per 100 000 pop)
Mortality (excluding HIV)	0.09 (0.063–0.12)	2.1 (1.5–2.9)
Prevalence (incl HIV)	1 (0.45–1.7)	24 (11–39)
Incidence (incl HIV)	0.72 (0.63–0.83)	17 (15–20)
Incidence (HIV-positive)	0.059 (0.034–0.089)	1.4 (0.81–2.1)
Case detection, all forms (%)	71 (62–81)	

## Case notifications 2010

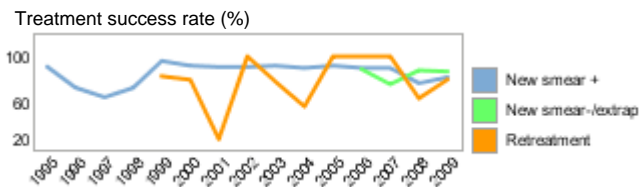
New cases	(%) Retreatment cases	(%)	
Smear-positive	194 (39) Relapse	10 (83)	
Smear-negative	99 (20) Treatment after failure	2 (17)	
Smear unknown	0 (0) Treatment after default	0 (0)	
Extrapulmonary	210 (42) Other	0 (0)	
Other	0 (0)		
Total new	503	Total retreatment	12
Total < 15 years	43		

Total new and relapse	513	(100% of total)
Total cases notified	515	

## Drug regimens

Rifampicin used throughout treatment	Yes
% of patients treated with fixed-dose combinations (FDCs)	100
Paediatric formulations procured	Yes

Treatment success rate 2009 (%)	
New smear-positive	82
New smear-negative/extrapulmonary	87
Retreatment	80



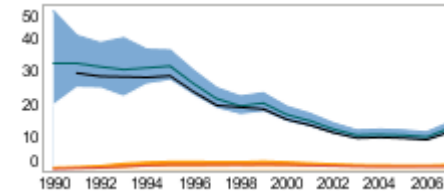
## MDR-TB, Estimates among notified cases \*

% of new TB cases with MDR-TB	1.1 (0.10–3.8)
% of retreatment TB cases with MDR-TB	36 (13–65)
Estimated MDR-TB cases among new pulmonary TB cases notified in 2010	3.2 (0.29–11)
Estimated MDR-TB cases among retreated pulmonary TB cases notified in 2010	4.3 (1.5–7.8)

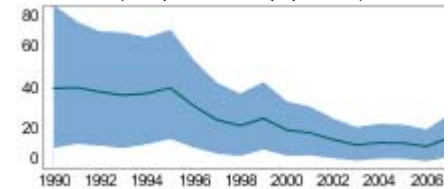
MDR-TB reported cases 2010	New	Retreat-ment	Total
Cases tested for MDR-TB	4	14	18
% of notified tested for MDR-TB	<1	117	3
Confirmed cases of MDR-TB	2	5	7
MDR-TB patients started treatment			7

Laboratories	2009	2010	2011
Smear (per 100 000 population)	4.0	3.9	3.9
Culture (per 5 million population)	3.6	3.5	3.5
DST (per 5 million population)	1.2	1.2	1.2

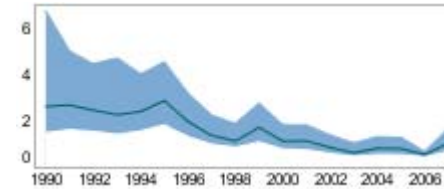
Incidence (HIV+TB in orange), notifications (black) (rates per 100 000 population)



Prevalence (rate per 100 000 population)



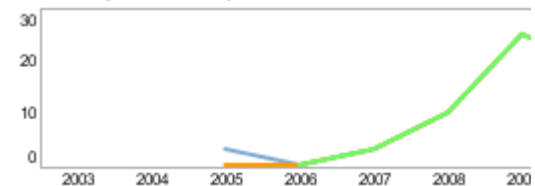
Mortality excluding HIV (rate per 100 000 population)



## TB/HIV 2010

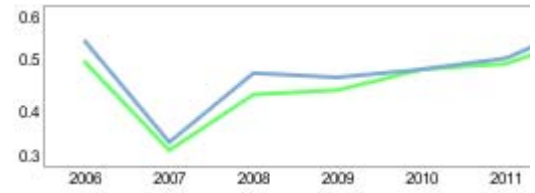
TB patients with known HIV status	
% of TB patients with known HIV status	
TB patients that are HIV-positive	
% of tested TB patients that are HIV-positive	
% HIV-positive TB patients started on CPT	
% HIV-positive TB patients started on ART	
HIV-positive people screened for TB	
HIV-positive people provided with IPT	

CPT (orange) and ART (green) for HIV-positive TB patients (



Financing	2011
Total budget (US\$ millions)	<1
Available funding (US\$ millions)	<1
% of budget funded	98
% available funding from domestic sources	98
% available funding from Global Fund	0
NTP Budget (blue) and available funding (green) (US\$ million)	

Second-line DST available	Outside country
National Reference Laboratory	Yes



\* Ranges represent uncertainty intervals

Generated: August 28, 2011