

## Egypt



## Tuberculosis

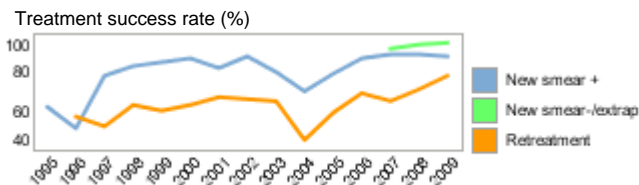
Population 2010 (millions)		81
Estimates of burden * 2010	Number (thousands)	Rate (per 100 000 pop)
Mortality (excluding HIV)	0.66 (0.66–0.67)	0.82 (0.82–0.82)
Prevalence (incl HIV)	23 (9.9–38)	28 (12–46)
Incidence (incl HIV)	15 (12–17)	18 (15–21)
Incidence (HIV-positive)	0.054 (0.028–0.09)	0.07 (0.03–0.11)
Case detection, all forms (%)	62 (54–77)	

Case notifications 2010			
New cases	(%)	Retreatment cases	(%)
Smear-positive	4 679 (53)	Relapse	375 (53)
Smear-negative	1 137 (13)	Treatment after failure	118 (17)
Smear unknown	21 (<1)	Treatment after default	210 (30)
Extrapulmonary	3 048 (34)	Other	0 (0)
Other	0 (0)		
Total new	8 885	Total retreatment	703
Total < 15 years	490		

Total new and relapse	9 260	(97% of total)
Total cases notified	9 588	

Drug regimens	
Rifampicin used throughout treatment	Yes
% of patients treated with fixed-dose combinations (FDCs)	80
Paediatric formulations procured	Yes

Treatment success rate 2009 (%)	
New smear-positive	88
New smear-negative/extrapulmonary	95
Retreatment	78

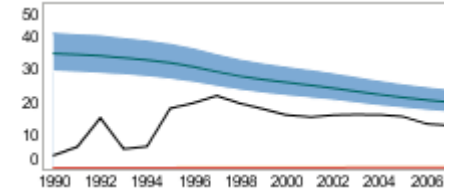


MDR-TB, Estimates among notified cases *	
% of new TB cases with MDR-TB	2.2 (1.2–3.7)
% of retreatment TB cases with MDR-TB	38 (32–45)
Estimated MDR-TB cases among new pulmonary TB cases notified in 2010	130 (70–220)
Estimated MDR-TB cases among retreated pulmonary TB cases notified in 2010	270 (220–320)

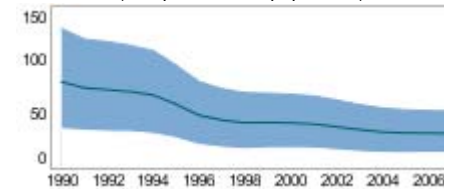
MDR-TB reported cases 2010	New	Retreat-ment	Total
Cases tested for MDR-TB			
% of notified tested for MDR-TB			
Confirmed cases of MDR-TB			
MDR-TB patients started treatment			48

Laboratories	2009	2010	2011
Smear (per 100 000 population)	0.3	0.4	0.4
Culture (per 5 million population)	1.1	1.1	1.3
DST (per 5 million population)	<0.1	<0.1	0.2

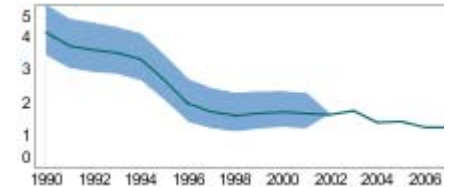
Incidence (HIV+TB in orange), notifications (black) (rates per 100 000 population)



Prevalence (rate per 100 000 population)

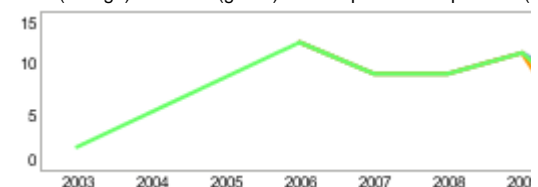


Mortality excluding HIV (rate per 100 000 population)



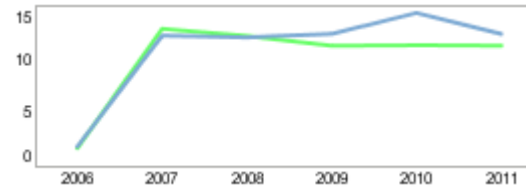
TB/HIV 2010	
TB patients with known HIV status	
% of TB patients with known HIV status	
TB patients that are HIV-positive	
% of tested TB patients that are HIV-positive	
% HIV-positive TB patients started on CPT	
% HIV-positive TB patients started on ART	
HIV-positive people screened for TB	
HIV-positive people provided with IPT	

CPT (orange) and ART (green) for HIV-positive TB patients (



Financing	2011
Total budget (US\$ millions)	12
Available funding (US\$ millions)	11
% of budget funded	91
% available funding from domestic sources	82
% available funding from Global Fund	16
NTP Budget (blue) and available funding (green) (US\$ million)	

Second-line DST available	In country
National Reference Laboratory	Yes



\* Ranges represent uncertainty intervals

Generated: August 28, 2011