

Bahrain

-DRAFT-

Tuberculosis profile

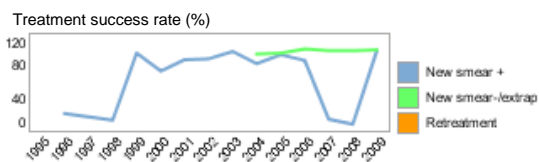
Population 2010 (millions)		1
Estimates of burden * 2010	Number (thousands)	Rate (per 100 000 pop)
Mortality (excluding HIV)	0.011 (0.01–0.012)	0.9 (0.83–0.97)
Prevalence (incl HIV)	0.32 (0.076–0.57)	26 (6–45)
Incidence (incl HIV)	0.29 (0.26–0.33)	23 (20–26)
Incidence (HIV-positive)	0.011 (<0.01–0.022)	0.84 (0.27–1.7)
Case detection, all forms (%)	85 (75–95)	

Case notifications 2010			
New cases	(%)	Retreatment cases	(%)
Smear-positive	90	(37) Relapse	0
Smear-negative	58	(24) Treatment after failure	0
Smear unknown	0	(0) Treatment after default	0
Extrapulmonary	98	(40) Other	0
Other	0	(0)	
Total new	246	Total retreatment	0
Total < 15 years	5		

Total new and relapse	246	(100% of total)
Total cases notified	246	

Drug regimens	
Rifampicin used throughout treatment	Yes
% of patients treated with fixed-dose combinations (FDCs)	0
Paediatric formulations procured	Yes

Treatment success rate 2009 (%)	
New smear-positive	98
New smear-negative/extrapulmonary	99
Retreatment	

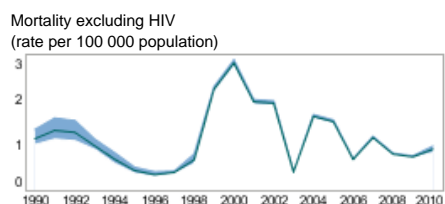
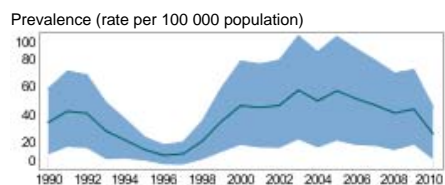
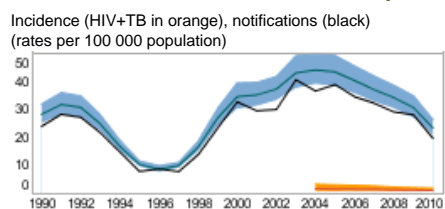


MDR-TB, Estimates among notified cases *	
% of new TB cases with MDR-TB	0.0 (0.0–2.3)
% of retreatment TB cases with MDR-TB	
Estimated MDR-TB cases among new pulmonary TB cases notified in 2010	
Estimated MDR-TB cases among retreated pulmonary TB cases notified in 2010	

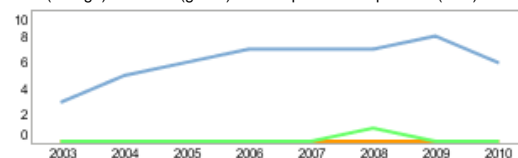
MDR-TB reported cases 2010	New	Retreat-ment	Total
Cases tested for MDR-TB	162	0	162
% of notified tested for MDR-TB	66		66
Confirmed cases of MDR-TB	0	0	0
MDR-TB patients started treatment			0

Laboratories	2009	2010	2011
Smear (per 100 000 population)	1.5	1.4	
Culture (per 5 million population)	8.6	7.9	
DST (per 5 million population)	4.3	4.0	

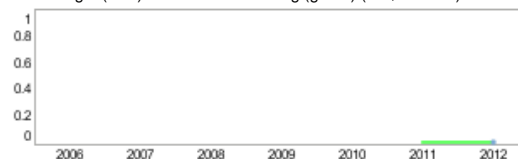
Second-line DST available	Outside country
National Reference Laboratory	No



TB/HIV 2010	
TB patients with known HIV status	161
% of TB patients with known HIV status	65
TB patients that are HIV-positive	6
% of tested TB patients that are HIV-positive	4
% HIV-positive TB patients started on CPT	0
% HIV-positive TB patients started on ART	0
HIV-positive people screened for TB	
HIV-positive people provided with IPT	
CPT (orange) and ART (green) for HIV-positive TB patients (blue)	



Financing	2011	2012
Total budget (US\$ millions)		0
Available funding (US\$ millions)	0	0
% of budget funded		
% available funding from domestic sources		
% available funding from Global Fund		
NTP Budget (blue) and available funding (green) (US\$ millions)		



* Ranges represent uncertainty intervals

Generated: August 28, 2011