

Afghanistan



Tuberculosis

| High TB burden |

Population 2010 (millions) 31

Estimates of burden * 2010	Number (thousands)	Rate (per 100 000 pop)
Mortality (excluding HIV)	12 (8.6–16)	38 (27–50)
Prevalence (incl HIV)	110 (51–180)	352 (162–578)
Incidence (incl HIV)	59 (49–71)	189 (155–226)
Incidence (HIV-positive)		
Case detection, all forms (%)	48 (39–57)	

Case notifications 2010

New cases	(%) Retreatment cases	(%)	
Smear-positive	12 947 (48) Relapse	1 116 (84)	
Smear-negative	4 479 (17) Treatment after failure	147 (11)	
Smear unknown	2 606 (10) Treatment after default	62 (5)	
Extrapulmonary	6 248 (23) Other		
Other	633 (2)		
Total new	26 913	Total retreatment	1 325
Total < 15 years	642		

Total new and relapse	28 029	(99% of total)
Total cases notified	28 238	

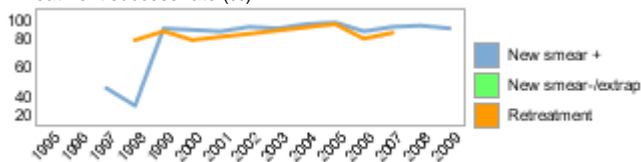
Drug regimens

Rifampicin used throughout treatment	No
% of patients treated with fixed-dose combinations (FDCs)	100
Paediatric formulations procured	Yes

Treatment success rate 2009 (%)

New smear-positive	86
New smear-negative/extrapulmonary	
Retreatment	

Treatment success rate (%)



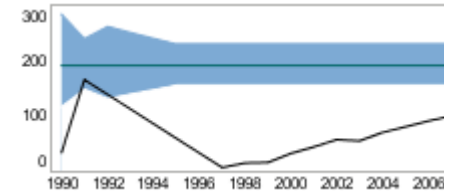
MDR-TB, Estimates among notified cases *

% of new TB cases with MDR-TB	6.1 (3.5–10)
% of retreatment TB cases with MDR-TB	8.3 (1.7–21)
Estimated MDR-TB cases among new pulmonary TB cases notified in 2010	1 300 (720–2 100)
Estimated MDR-TB cases among retreated pulmonary TB cases notified in 2010	110 (23–280)

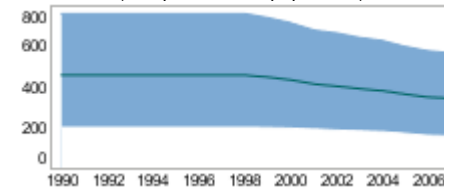
MDR-TB reported cases 2010	New	Retreat-ment	Total
Cases tested for MDR-TB	238	34	272
% of notified tested for MDR-TB	<1	3	<1
Confirmed cases of MDR-TB	13	6	19
MDR-TB patients started treatment			0

Laboratories	2009	2010	2011
Smear (per 100 000 population)	1.9	1.9	1.9
Culture (per 5 million population)	0	0.2	0.6
DST (per 5 million population)	0	0	0

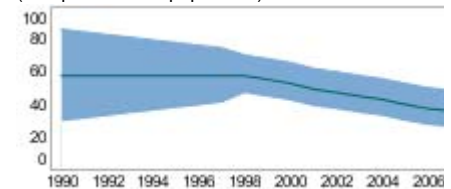
Incidence (HIV+TB in orange), notifications (black) (rates per 100 000 population)



Prevalence (rate per 100 000 population)



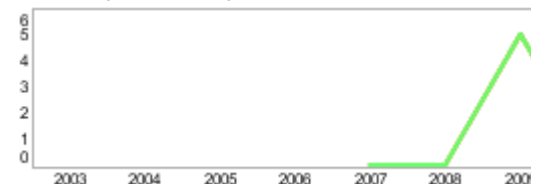
Mortality excluding HIV (rate per 100 000 population)



TB/HIV 2010

TB patients with known HIV status	
% of TB patients with known HIV status	
TB patients that are HIV-positive	
% of tested TB patients that are HIV-positive	
% HIV-positive TB patients started on CPT	
% HIV-positive TB patients started on ART	
HIV-positive people screened for TB	
HIV-positive people provided with IPT	

CPT (orange) and ART (green) for HIV-positive TB patients (



Financing 2011

Total budget (US\$ millions)	9
Available funding (US\$ millions)	5
% of budget funded	58
% available funding from domestic sources	7
% available funding from Global Fund	69
NTP Budget (blue) and available funding (green) (US\$ million)	

Second-line DST available	Outside country
National Reference Laboratory	Yes



* Ranges represent uncertainty intervals

Generated: August 28, 2011