



World Health Organization – Regional Office for Eastern Mediterranean

AFP SURVEILLANCE

Week 33, ending 19 August 2012

21-Aug-12

Number 724

Table 1: Acute Flaccid Paralysis (AFP) cases by week of onset

Country	Reported AFP cases by week of onset - Week (33/12)/ Ending on : (19/08/12)														
	Total AFP 2010	Total AFP 2011	Total AFP to date, 2012	W 22 03 Jun 12	W 23 10 Jun 12	W 24 17 Jun 12	W 25 24 Jun 12	W 26 01 Jul 12	W 27 08 Jul 12	W 28 15 Jul 12	W 29 22 Jul 12	W 30 29 Jul 12	W 31 05 Aug 12	W 32 12 Aug 12	W 33 19 Aug 12
Afghanistan	1572	1831	1159	51	46	32	27	35	43	30	43	27	40	21	
Bahrain	10	10	12	0	0	0	0	0	0	0	0	0	0	0	
Djibouti	3	6	4	0	0	0	0	0	0	0	0	0	0	0	
Egypt	1151	1023	656	12	22	14	33	26	13	16	21	18	14	18	
Iran	622	603	428	12	17	14	20	8	11	14	19	8	12	3	
Iraq	489	530	307	10	10	5	6	9	10	7	8	9	4	1	
Jordan ****	40	30	18	2	0	0	1	1	0	0	0	0			
Kuwait	24	38	24	0	0	0	0	1	0	1	1	0	0	0	
Lebanon ****	19	22	21	1	3	0	1	1	0	1	1	1	0	0	
Libya	46	35	28	2	1	0	0	0	0	0	1	2	0	1	
Morocco	100	76	44	1	1	2	1	4	0	1	1				
Oman	33	39	19	1	1	1	1	0	1	0	0	0	1	0	
Pakistan	5393	5762	2835	91	98	83	90	82	70	91	90	57	36	7	
Palestine ****	15	17	12	0	0	0	1	1	0	1	2	0	0	0	
Qatar	5	6	10	0	0	1	1	0	0	0	0	0	1	0	
Saudi Arabia	239	213	150	1	6	1	4	2	3	4	0	1	2	5	1
Somalia	164	172	89	4	5	1	4	2	1	4	1	3	1	3	
Sudan	408	362	259	9	6	7	5	6	4	5	6	4	3	6	
South Sudan	310	341	176	8	6	6	11	7	6	8	2	0	0	0	
Syria ****	194	168	72	2	4	2	5	3	1	0	1	0	0	0	
Tunisia	57	47	39	0	2	3	4	1	3	0	0	1	0	0	
U.A.E	18	25	29	3	0	0	1	2	0	0	0	1	0	0	
Yemen	426	386	275	10	9	13	8	14	12	6	7	7	6	0	
Total EMR	11338	11742	6666	220	237	185	224	205	178	189	204	139	120	65	1

No data = No report received

Table 2: Confirmed polio cases by month of onset

Country	Total year 2010	Total year 2011	19/08		Confirmed polio cases by month of onset											
			2011	2012	September 2011	October 2011	November 2011	December 2011	January 2012	February 2012	March 2012	April 2012	May 2012	June 2012	July 2012	August 2012
Afghanistan	25	80	24	17	14	13	15	10	4	1	1	0	4	3	4	
Bahrain	0	0	0	0	0	0	0	0	0	0	0	0	0	0	0	
Djibouti	0	0	0	0	0	0	0	0	0	0	0	0	0	0	0	
Egypt	0	0	0	0	0	0	0	0	0	0	0	0	0			
Iran	0	0	0	0	0	0	0	0	0	0	0	0	0	0		
Iraq	0	0	0	0	0	0	0	0	0	0	0	0	0	0		
Jordan ****	0	0	0	0	0	0	0	0	0	0	0	0	0		0	
Kuwait	0	0	0	0	0	0	0	0	0	0	0	0	0	0		
Lebanon ****	0	0	0	0	0	0	0	0	0	0	0	0	0	0	0	
Libya	0	0	0	0	0	0	0	0	0	0	0	0	0			
Morocco	0	0	0	0	0	0	0	0	0	0	0	0	0			
Oman	0	0	0	0	0	0	0	0	0	0	0	0	0	0	0	
Pakistan	144	198	84	29	34	37	18	21	11	3	1	1	6	2	5	
Palestine ****	0	0	0	0	0	0	0	0	0	0	0	0	0	0		
Qatar	0	0	0	0	0	0	0	0	0	0	0	0	0		0	
Saudi Arabia	0	0	0	0	0	0	0	0	0	0	0	0	0			
Somalia	0	0	0	0	0	0	0	0	0	0	0	0	0	0		
Sudan	0	0	0	0	0	0	0	0	0	0	0	0	0	0		
South Sudan	0	0	0	0	0	0	0	0	0	0	0	0	0			
Syria ****	0	0	0	0	0	0	0	0	0	0	0	0	0	0		
Tunisia	0	0	0	0	0	0	0	0	0	0	0	0	0	0		
U.A.E	0	0	0	0	0	0	0	0	0	0	0	0	0	0		
Yemen	0	0	0	0	0	0	0	0	0	0	0	0	0	0		
Total EMR	169	278	108	46	48	50	33	31	15	4	2	1	10	5	9	

**** UNRWA cases are included with those of country of residence



AFP SURVEILLANCE

Week 33, ending 19 August 2012

21-Aug-12

Number 724

Table 3: Investigation of AFP cases with paralysis onset in 2011 & 2012 up to Week (33/12)/ Ending on : (19/08/12)

COUNTRY	2011											2012											Latest line List Date				
	AFP									Specimen		Wild isolates ****		AFP										Specimen		Wild isolates ****	
	Total AFP cases onset 2011	Case classification					Non polio AFP rate **	AFP cases pending classification > 90 days from onset of paralysis	AFP cases pending classification and lab > 90 days from onset of paralysis	% with *** adequate specimens	Wild P1 Poliovirus	Wild P3 Poliovirus	Total AFP cases onset 2012	Total Confirmed Cases *	Case classification					Annualized Non polio AFP rate **	AFP cases pending classification > 90 days from onset of paralysis	AFP cases pending classification and lab > 90 days from onset of paralysis		% with *** adequate specimens	Wild P1 Poliovirus	Wild P3 Poliovirus	
		Total Confirmed Cases *	Polio Compatible	Pending Classification	Discarded (non polio AFP)	VDPV									Polio Compatible	Pending Classification	Discarded (non polio AFP)	VDPV									
Afghanistan	1831	80	13	0	1737	1	10.0	0	0	92.1	80	0	1159	17	3	103	1036	0	10.3	0	0	92.5	17	0	16/08/2012		
Bahrain	10	0	0	0	10	0	3.8	0	0	90.0	0	0	12	0	0	0	12	0	7.0	0	0	91.7	0	0	12/08/2012		
Djibouti	6	0	0	0	6	0	2.1	0	0	66.7	0	0	4	0	0	1	3	0	2.1	1	0	75.0	0	0	18/08/2012		
Egypt	1023	0	0	0	1022	1	3.3	0	0	92.6	0	0	656	0	0	73	583	0	3.2	1	0	89.6	0	0	16/08/2012		
Iran	603	0	0	0	601	2	3.1	0	0	91.4	0	0	428	0	0	23	405	1	3.5	4	0	92.5	0	0	18/08/2012		
Iraq	530	0	0	0	530	0	3.7	0	0	89.2	0	0	307	0	0	33	274	0	3.4	17	9	89.3	0	0	16/08/2012		
Jordan	30	0	0	0	30	0	1.3	0	0	96.7	0	0	18	0	0	6	12	0	1.2	2	0	88.9	0	0	02/08/2012		
Kuwait	38	0	0	0	38	0	5.1	0	0	92.1	0	0	24	0	0	3	21	0	5.0	1	0	87.5	0	0	15/08/2012		
Lebanon	22	0	0	0	22	0	2.0	0	0	45.5	0	0	21	0	0	12	9	0	2.7	6	0	42.9	0	0	17/08/2012		
Libya	35	0	0	0	35	0	1.7	0	0	100.0	0	0	28	0	0	5	23	0	2.2	0	0	100.0	0	0	18/08/2012		
Morocco	76	0	0	0	76	0	0.8	0	0	80.3	0	0	44	0	0	17	27	0	0.7	7	0	75.0	0	0	28/07/2012		
Oman	39	0	0	0	39	0	5.1	0	0	97.4	0	0	19	0	0	1	18	0	3.8	0	0	100.0	0	0	15/08/2012		
Pakistan	5762	198	31	0	5533	0	7.3	0	0	87.5	196	2	2835	29	0	220	2586	0	5.8	76	4	90.1	27#	3#	16/08/2012		
Palestine	17	0	0	0	17	0	1.1	0	0	100.0	0	0	12	0	0	6	6	0	1.1	1	0	91.7	0	0	12/08/2012		
Qatar	6	0	0	0	6	0	2.6	0	0	83.3	0	0	10	0	0	7	3	0	6.8	4	0	90.0	0	0	15/08/2012		
Saudi Arabia	213	0	0	0	213	0	2.5	0	0	99.1	0	0	150	0	0	24	126	0	2.7	0	0	95.3	0	0	17/08/2012		
Somalia	172	0	1	0	162	9	3.4	0	0	98.3	0	0	89	0	1	12	76	0	2.7	3	0	96.6	0	0	17/08/2012		
Sudan	362	0	0	0	362	0	2.4	0	0	96.7	0	0	259	0	0	15	243	1	2.6	0	0	96.1	0	0	16/08/2012		
South Sudan	341	0	0	0	340	1	4.5	0	0	93.3	0	0	176	0	0	29	146	1	3.3	7	0	94.9	0	0	17/08/2012		
Syria	168	0	0	0	168	0	1.7	0	0	93.5	0	0	72	0	0	3	69	0	1.1	1	0	88.9	0	0	16/08/2012		
Tunisia	47	0	0	0	47	0	1.8	0	0	93.6	0	0	39	0	0	3	36	0	2.3	1	0	71.8	0	0	14/08/2012		
U.A.E	25	0	0	0	25	0	2.5	0	0	100.0	0	0	29	0	0	1	28	0	4.5	0	0	100.0	0	0	16/08/2012		
Yemen	386	0	0	0	376	10	3.5	0	0	91.5	0	0	275	0	0	41	232	2	3.7	1	0	93.8	0	0	12/08/2012		
EMR	11742	278	45	0	11395	24	4.8	0	0	90.0	276	2	6666	46	4	638	5974	5	4.3	133	13	91.0	44	3			
2010	11338	169	31	0	11129	10	4.6	0	0	90.9	137	32															

* Confirmed polio cases refer to wild isolation from AFP cases or from contacts of negative index AFP cases

** Non-polio AFP per 100,000 children <15 years

*** Adequate here refers to two stool specimens collected at least 24 hours apart, within 14 days of paralysis onset

**** AFP cases co infected with P1 and P3 are counted separately as wild isolates

One AFP case in Pakistan had co infection P1 & P3 from 2 contacts P1 & P3



Table 4: Investigation of contacts of AFP cases with paralysis onset in 2011 up to Week (33/12)/ Ending on : (19/08/12)

Country	No. of AFP cases	No. of eligible AFP cases for contact sampling*	% of eligible AFP cases with contact samplings	% of eligible AFP cases with 3+ contacts	Total number of Contacts**	% of contacts under 5 years	% of contacts with specimens collected within 7 days of notification of index	% Contact specimens in lab within 3 days of collection	% Contact specimens positive for NPEV	% Contact specimens positive for Sabin like virus	No. of contacts positive for wild virus	% of wild polio virus isolation from contacts	No. of Contacts positive for VDPVs	No. of -ve index AFP cases identified positive by contact	No. of district infected from contacts
Afghanistan	1159	87	86.2	85.1	515	94.2	74.4	31.9	23.2	4.0	0	0.0		0	0
Bahrain	12	1	100.0	0.0	1	0.0	100.0	0.0	0.0	0.0	0	0.0		0	0
Djibouti	4	1	100.0	100.0	8	75.0	100.0	0.0	0.0	50.0	0	0.0		0	0
Egypt	656	73	74.0	74.0	240	78.8	43.8	100.0	19.6	1.7	0	0.0		0	0
Iran	428	32	93.8	81.3	119	77.3	27.7	79.8	3.4	0.8	0	0.0		0	0
Iraq	307	33	72.7	57.6	79	62.0	46.8	67.1	3.8	0.0	0	0.0		0	0
Jordan	18	2	0.0	0.0	0						0			0	0
Kuwait	24	3	33.3	33.3	63	49.2	69.8	100.0	0.0	0.0	0	0.0		0	0
Lebanon	21	12	50.0	25.0	15	13.3	66.7	15.4	15.4	0.0	0	0.0		0	0
Libya	28	0			0						0			0	0
Morocco	44	11	45.5	27.3	29	34.5	17.2	96.2	0.0	0.0	0	0.0		0	0
Oman	19	0			56	87.5	94.6	100.0	14.6	2.1	0	0.0		0	0
Pakistan	2835	281	87.2	84.3	892	91.4	61.1	68.4	25.0	4.0	4	0.5		2	1
Palestine	12	1	0.0	0.0	0						0			0	0
Qatar	10	1	0.0	0.0	0						0			0	0
Saudi Arabia	150	7	71.4	71.4	40	50.0	70.0	63.2	0.0	5.3	0	0.0		0	0
Somalia	89	3	100.0	100.0	263	92.0	99.2	8.4	15.6	3.6	0	0.0		0	0
Sudan	259	10	100.0	100.0	197	79.2	53.3	36.3	11.9	0.6	0	0.0		0	0
South Sudan	176	9	100.0	100.0	501	82.0	90.2	1.2	9.5	1.4	0	0.0		0	0
Syria	72	8	62.5	37.5	18	77.8	16.7	70.6	0.0	0.0	0	0.0		0	0
Tunisia	39	11	36.4	18.2	43	4.7	20.9	47.6	0.0	0.0	0	0.0		0	0
U.A.E.	29	0			0						0			0	0
Yemen	275	17	88.2	82.4	130	57.7	56.9	0.0	13.2	18.4	0	0.0		0	0
Grand Total 2012	6666	603	81.8	76.9	3209	82.5	67.2	48.6	17.2	3.0	4	0.1		2	1
Grand Total 2011	11742	1191	81.4	78.8	6046	85.7	69.6	51.3	18.5	3.8	33	0.6	16	18	9

* Eligible refers to AFP cases with inadequate stool specimens

** Total number of contacts from eligible AFP cases and from other AFP cases as per with country criteria for contact sampling

Last wild contacts in EMRO, 01/01/2012- 19/08/2012

Year	Country	Count of wild contacts	Date of Most Recent stool collection
2012	Pakistan	4	31/01/2012
2012 Total		4	31/01/2012



Table 5: Laboratory investigation of AFP cases with paralysis onset in 2012 up to Week (33/12)/ Ending on : (19/08/12)

Country	Polio laboratories Sequencing performed by CDC and RIVM laboratories	AFP cases with specimens	Preliminary virus isolation results of AFP cases						Poliovirus intratypic differentiation results #										Indicators				Latest report Date							
			Referred for ITD		NPEV only	Negative	Pending		Type 1			Type 2			Type 3			Discordant pending sequence	NPEV by PCR	Non-EV	Pending ITD	% specimens positive for NPEV*		% AFP cases with culture results within 14 days	% AFP cases with ITD results within 7 days	% AFP cases with ITD results within 45 days of onset**				
			L20B+	L20B-/NPEV			received < / = 14 days	received > 14 days ago	Wild	Sabin	VDPV	Wild	Sabin	VDPV	Wild	Sabin	VDPV													
																										2	6	37	2	16%
Afghanistan	RRL Pakistan	1136	72	9	217	776	61	1	17	23		6		44			1			17%	100%	99%	98%	16/08/2012						
Bahrain	PNL Oman	11			1	10														6%	100%		82%	12/08/2012						
Djibouti	NPL Kenya	4				4														0%			100%	18/08/2012						
Egypt**	RRL Egypt	642	14	4	104	468	33	19		10		2		6		1	3	3	16%	94%	100%	99%	16/08/2012							
Iran	NPL Iran	437	18		17	376	20	6		4		1	1	5				10	3%	99%	100%	99%	15/08/2012							
Iraq	NPL Iraq, RRL Egypt	306	10	1	43	233	8	12				1		1					14%	100%	100%	50%	16/08/2012							
Jordan	NPL Jordan, RRL Tunisia	20				19	1												8%	95%			16/08/2012							
Kuwait	RRL Kuwait	31				30	1												1%	67%		100%	16/08/2012							
Lebanon	RRL Egypt	34	2		6	26						1		1					15%	100%	100%	88%	16/08/2012							
Libya	RRL Tunisia	29			1	27	1												4%	96%		100%	16/08/2012							
Morocco	NPL Morocco, RRL Tunisia	49				42	5	2											0%	95%		98%	16/08/2012							
Oman	NPL Oman	18	1			17				1									14%	100%	100%	100%	12/08/2012							
Pakistan	RRL Pakistan	3000	162	18	616	2075	127	2	25	65		22		2	85			3	19%	100%	99%	98%	16/08/2012							
Palestine & UNRWA		12			2	7		3											22%	11%		78%	12/08/2012							
Qatar	NPL Oman	10	1			9												1	0%	100%	100%	100%	12/08/2012							
Saudi Arabia	NPL Saudi Arabia, NPL Oman	146	6		4	134	1	1		1		4		2					2%	96%	100%	92%	12/08/2012							
Somalia	NPL Kenya	88	2		18	59	4	5		1		1		1					23%	3%		96%	17/08/2012							
Sudan	NPL Sudan, RRL Egypt	258	4		33	211	10			4		1	1	1			2		12%	92%	100%	100%	16/08/2012							
South Sudan	NPL Kenya	175	6		21	126		22		1		1	1	5					14%	0%		92%	17/08/2012							
Syria	NPL Syria, RRL Tunisia	69			2	66		1											2%	100%			05/08/2012							
Tunisia	RRL Tunisia	38	2		1	34	1					2		1					1%	94%	50%	95%	16/08/2012							
U.A.E	NPL Oman	28				28													0%	100%		89%	12/08/2012							
Yemen	RRL Egypt	265	20	4	39	176	16	8		6		10	1	9	1		2		14%	90%	100%	89%	16/08/2012							
Total EMR 2012		6806	320	36	1125	4953	289	82	42	116		52	4	2	161	1	3	10	14	15%	95%	99%	97%							
Total EMR 2011		11584	668	62	2056	8794			258	183	2	109	18	2	222		2	6	37	2	16%	94%	98%	94%						

* Specimens from all sources including non-AFP cases, excluding environmental samples

** This indicator reflects surveillance and laboratory activities

*** Environmental surveillance initiated in Egypt in September 2000 showed the following:

Year	2000	2001	2002	2003	2004	2005	2006	2007	2008	2009	2010	2011	2012
Negative	52	55	136	299	469	499	492	458	444	481	415	448	224
Pending													33
Wild	2	75	26	12	13	2			2		1		
Grand Total	54	130	162	311	482	501	492	458	446	481	416	448	257

In 2008, out of 446 samples, 2 positive for wild virus in Giza governorate (Al Haram Site) genomic sequence data indicate importation from Ethiopia / South Sudan & Cairo governorate (Al Haggana 2) genomic sequence data indicate nearest importation from India. In 2 010, 1 positive sample for wild virus in Aswan governorate (Aswan City) genomic sequence data indicate nearest importation from Sudan.

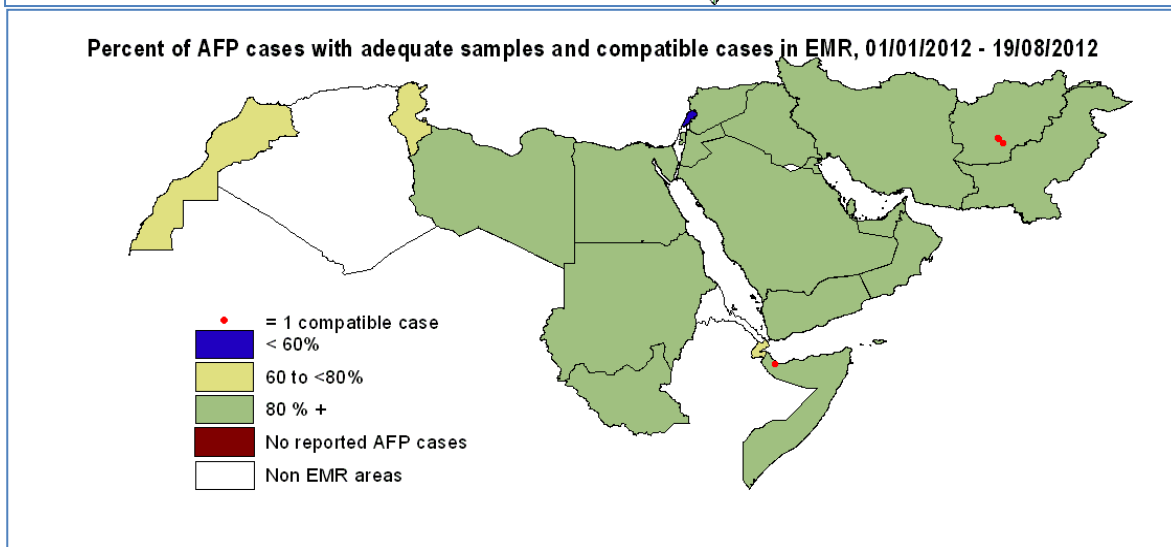
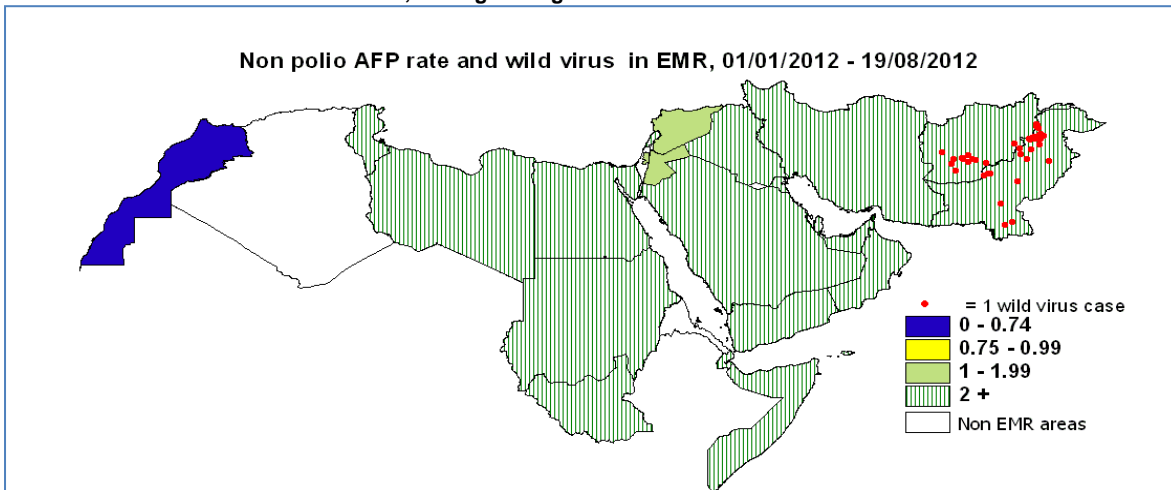
****Environmental surveillance initiated in Pakistan in August 2009 showed the following:

Status	2009		2010						2011					2012																				
	KHIBALDIA TOWN	KHIGADAP TOWN	KHIBALDIA TOWN	KHIGADAP TOWN	KHIGULSHAN-EIQBAL TOWN	LAHORE	PESHAWAR	RAWALPINDI	QUETTA	MULTAN	KHIBALDIA TOWN	KHIGADAP TOWN	KHIGULSHAN-EIQBAL TOWN	LAHORE	PESHAWAR	RAWALPINDI	QUETTA	MULTAN	KHIBALDIA TOWN	KHIGADAP TOWN	KHIGULSHAN-EIQBAL TOWN	LAHORE	PESHAWAR	RAWALPINDI	QUETTA	MULTAN	SUKKUR	HYDERABAD						
Negative	9	3	5	10	27	10	11	12	27	2	2	4	9	77	8	8	10	17	5	1	4	15	68	8	12	12	6	3	3	11	15	1	71	
Pending																																		14
Wild	1	8	7	2	18	6	20	12	6	12	5	9	9	79	4	28	14	19	19	11	20	21	136	8	2	15	11	4	2	4	5	1	52	
Grand Total	10	11	12	12	45	16	31	24	33	14	7	13	18	156	12	36	24	36	24	12	24	36	204	8	23	15	23	15	7	15	21	8	2	137



World Health Organization – Regional Office for Eastern Mediterranean
AFP SURVEILLANCE
Week 33, ending 19 August 2012

21-Aug-12
Number 724

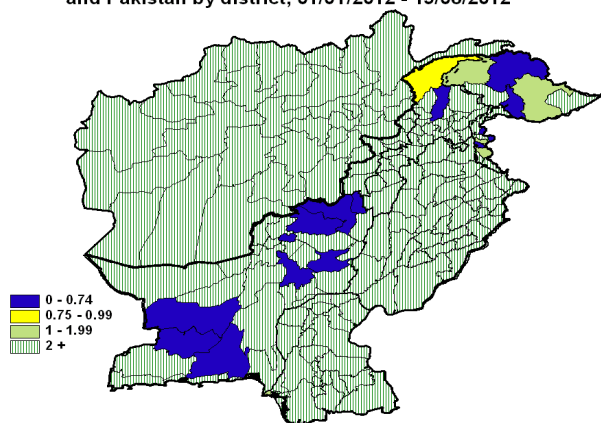


Wild polio cases by country and date of onset of paralysis in EMR, 2011-12

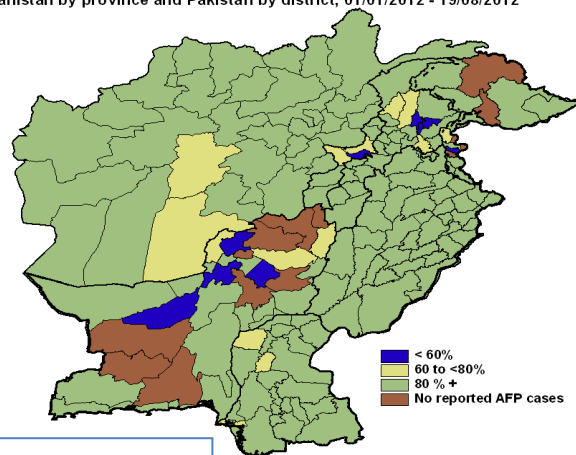
Year	COUNTRY	P1			P3			P1P3			Total Count	Total First Case	Total Last Case
		Count	First Case	Last Case	Count	First Case	Last Case	Count	First Case	Last Case			
2012	AFG	17	01/01/2012	21/07/2012							17	01/01/2012	21/07/2012
	PAK	26	01/01/2012	21/07/2012	2	19/02/2012	18/04/2012	1	04/01/2012	04/01/2012	29	01/01/2012	21/07/2012
2012 Total		43	01/01/2012	21/07/2012	2	19/02/2012	18/04/2012	1	04/01/2012	04/01/2012		01/01/2012	21/07/2012



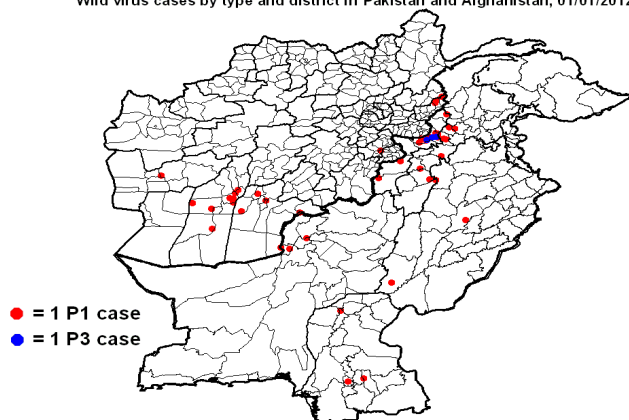
Non polio AFP rate in Afghanistan by province and Pakistan by district, 01/01/2012 - 19/08/2012



Percent of AFP cases with adequate samples in Afghanistan by province and Pakistan by district, 01/01/2012 - 19/08/2012



Wild virus cases by type and district in Pakistan and Afghanistan, 01/01/2012 - 19/08/2012



Wild polio cases by district and date of onset of paralysis in Pakistan, 2012

PROVINCE	DISTRICT	P1			P3			P1P3			Total Count	Total First case	Total Last case
		Count	First case	Last case	Count	First case	Last case	Count	First case	Last case			
KHYBER PAKHTOON	MARDAN	1	21/07/2012	21/07/2012							1	21/07/2012	21/07/2012
	LAKKIMRWT	2	16/01/2012	19/07/2012							2	16/01/2012	19/07/2012
	CHARSADA	1	12/07/2012	12/07/2012							1	12/07/2012	12/07/2012
	PESHAWAR	2	10/01/2012	13/06/2012							2	10/01/2012	13/06/2012
	DIKHAN	1	11/01/2012	11/01/2012							1	11/01/2012	11/01/2012
	KOHAT	1	11/01/2012	11/01/2012							1	11/01/2012	11/01/2012
FATA	BAJOUR	1	12/07/2012	12/07/2012							1	12/07/2012	12/07/2012
	KHYBER	7	06/01/2012	02/07/2012	2	19/02/2012	18/04/2012	1	04/01/2012	04/01/2012	10	04/01/2012	02/07/2012
	WAZIR-S	1	13/05/2012	13/05/2012							1	13/05/2012	13/05/2012
	WAZIR-N	1	10/02/2012	10/02/2012							1	10/02/2012	10/02/2012
BALUCHISTAN	QUETTA	3	01/01/2012	22/06/2012							3	01/01/2012	22/06/2012
PUNJAB	RAJANPUR	1	21/05/2012	21/05/2012							1	21/05/2012	21/05/2012
	JHANG	1	20/01/2012	20/01/2012							1	20/01/2012	20/01/2012
SINDH	LARKANA	1	21/05/2012	21/05/2012							1	21/05/2012	21/05/2012
	HYDERABAD	1	27/01/2012	27/01/2012							1	27/01/2012	27/01/2012
	MIRPURKHAS	1	03/01/2012	03/01/2012							1	03/01/2012	03/01/2012
Grand Total		26	01/01/2012	21/07/2012	2	19/02/2012	18/04/2012	1	04/01/2012	04/01/2012		01/01/2012	21/07/2012

Khyber P1 case (NW/34/12/005) was identified as wild by a positive contact with date of stool collection 30/01/2012

Khyber P1P3 case (NW/34/12/002) was identified as wild by positive contacts with date of stool collection 30/01/2012

Wild polio cases by district and date of onset of paralysis in Afghanistan, 2012

PROVINCE	DISTRICT	P1	First case	Last case
KUNAR	BAR KUNAR	2	30/06/2012	21/07/2012
	NARI	1	01/07/2012	01/07/2012
HILMAND	SANGIN	1	20/07/2012	20/07/2012
	NAHRI SARRAJ	4	03/05/2012	05/07/2012
	REG (H)	1	28/06/2012	28/06/2012
	NAD ALI	2	01/01/2012	23/01/2012
FARAH	BALA BULUK	1	02/06/2012	02/06/2012
KANDAHAR	MAYWAND	1	18/05/2012	18/05/2012
	KHAKREZ	1	14/03/2012	14/03/2012
	KANDAHAR	1	15/01/2012	15/01/2012
	ARGHISTAN	1	03/01/2012	03/01/2012
PAKTYA	JADRAN	1	15/02/2012	15/02/2012
Grand Total		17	01/01/2012	21/07/2012