



World Health Organization – Regional Office for Eastern Mediterranean

AFP SURVEILLANCE

Week 32, ending 12 August 2012

13-Aug-12

Number 723

Table 1: Acute Flaccid Paralysis (AFP) cases by week of onset

Country	Reported AFP cases by week of onset - Week (32/12)/ Ending on : (12/08/12)														
	Total AFP 2010	Total AFP 2011	Total AFP to date, 2012	W 21 27 May 12	W 22 03 Jun 12	W 23 10 Jun 12	W 24 17 Jun 12	W 25 24 Jun 12	W 26 01 Jul 12	W 27 08 Jul 12	W 28 15 Jul 12	W 29 22 Jul 12	W 30 29 Jul 12	W 31 05 Aug 12	W 32 12 Aug 12
Afghanistan	1572	1831	1132	42	51	46	32	27	35	43	30	43	27	26	8
Bahrain	10	10	12	1	0	0	0	0	0	0	0	0	0	0	0
Djibouti	3	6	4	0	0	0	0	0	0	0	0	0	0	0	0
Egypt	1151	1023	639	21	12	22	14	33	26	12	16	21	18	13	3
Iran	622	603	410	10	11	17	14	20	8	10	14	18	4	3	0
Iraq	489	530	304	9	10	10	5	6	9	10	7	8	9	2	
Jordan ****	40	30	18	0	2	0	0	1	1	0	0	0	0		
Kuwait	24	38	22	1	0	0	0	0	1	0					
Lebanon ****	19	22	19	1	1	3	0	1	1	0	0	1	0	0	
Libya	46	35	27	0	2	1	0	0	0	0	0	1	2	0	
Morocco	100	76	44	1	1	1	2	1	4	0	1	1	0	0	
Oman	33	39	18	0	1	1	1	1	0	1	0	0	0	0	
Pakistan	5393	5762	2769	112	91	96	79	90	80	70	87	88	39	15	0
Palestine ****	15	17	12	0	0	0	0	1	1	0	1	2	0	0	0
Qatar	5	6	10	0	0	0	1	1	0	0	0	0	0	1	
Saudi Arabia	239	213	145	3	1	6	1	4	2	3	4	0	1	2	1
Somalia	164	172	86	1	4	5	1	4	2	1	4	1	3	1	
Sudan	408	362	250	8	9	6	7	5	6	4	5	6	4	0	0
South Sudan	310	341	176	4	8	6	6	11	7	6	8	2	0	0	
Syria ****	194	168	72	5	2	4	2	5	3	1	0	1	0	0	0
Tunisia	57	47	32	1	0	2	3	2	0	0					
U.A.E	18	25	29	0	3	0	0	1	2	0	0	0	1	0	0
Yemen	426	386	275	8	10	9	13	8	14	12	6	7	7	6	0
Total EMR	11338	11742	6505	228	219	235	181	222	202	173	183	200	115	69	12

No data = No report received

Table 2: Confirmed polio cases by month of onset

Country	Total year 2010	Total year 2011	12/08		Confirmed polio cases by month of onset											
			2011	2012	September 2011	October 2011	November 2011	December 2011	January 2012	February 2012	March 2012	April 2012	May 2012	June 2012	July 2012	August 2012
Afghanistan	25	80	19	17	14	13	15	10	4	1	1	0	4	3	4	
Bahrain	0	0	0	0	0	0	0	0	0	0	0	0	0	0	0	
Djibouti	0	0	0	0	0	0	0	0	0	0	0	0	0	0	0	
Egypt	0	0	0	0	0	0	0	0	0	0	0	0	0			
Iran	0	0	0	0	0	0	0	0	0	0	0		0	0		
Iraq	0	0	0	0	0	0	0	0	0	0	0	0	0	0		
Jordan ****	0	0	0	0	0	0	0	0	0	0	0	0	0			
Kuwait	0	0	0	0	0	0	0	0	0	0	0	0	0			
Lebanon ****	0	0	0	0	0	0	0	0	0	0	0	0	0	0	0	
Libya	0	0	0	0	0	0	0	0	0	0	0	0	0			
Morocco	0	0	0	0	0	0	0	0	0	0	0		0			
Oman	0	0	0	0	0	0	0	0	0	0	0	0	0	0	0	
Pakistan	144	198	76	29	34	37	18	21	11	3	1	1	6	2	5	
Palestine ****	0	0	0	0	0	0	0	0	0	0	0	0	0	0		
Qatar	0	0	0	0	0	0	0	0	0	0	0	0	0		0	
Saudi Arabia	0	0	0	0	0	0	0	0	0	0	0	0	0			
Somalia	0	0	0	0	0	0	0	0	0	0	0	0	0	0		
Sudan	0	0	0	0	0	0	0	0	0	0	0	0	0			
South Sudan	0	0	0	0	0	0	0	0	0	0	0	0	0			
Syria ****	0	0	0	0	0	0	0	0	0	0	0	0	0	0		
Tunisia	0	0	0	0	0	0	0	0	0	0	0	0	0			
U.A.E	0	0	0	0	0	0	0	0	0	0	0	0	0	0	0	
Yemen	0	0	0	0	0	0	0	0	0	0	0	0	0	0	0	
Total EMR	169	278	95	46	48	50	33	31	15	4	2	1	10	5	9	

**** UNRWA cases are included with those of country of residence



AFP SURVEILLANCE

13-Aug-12

Week 32, ending 12 August 2012

Number 723

Table 3: Investigation of AFP cases with paralysis onset in 2011 & 2012 up to Week (32/12)/ Ending on : (12/08/12)

COUNTRY	2011											2012											Latest line List Date		
	AFP									Specimen	Wild isolates		AFP									Specimen		Wild isolates	
	Total AFP cases onset 2011	Case classification					Non polio AFP rate **	AFP cases pending classification > 90 days from onset of paralysis	AFP cases pending classification and lab > 90 days from onset of paralysis		% with *** adequate specimens	Wild P1 Poliovirus	Wild P3 Poliovirus	Total AFP cases onset 2012	Case classification					Annualized Non polio AFP rate **	AFP cases pending classification > 90 days from onset of paralysis			AFP cases pending classification and lab > 90 days from onset of paralysis	% with *** adequate specimens
		Total Confirmed Cases *	Polio Compatible	Pending Classification	Discarded (non polio AFP)	VDPV				Total Confirmed Cases *					Polio Compatible	Pending Classification	Discarded (non polio AFP)	VDPV							
Afghanistan	1831	80	13	0	1737	1	10.0	0	0	92.1	80	0	1132	17	3	84	1028	0	10.4	0	0	92.2	17	0	13/08/2012
Bahrain	10	0	0	0	10	0	3.8	0	0	90.0	0	0	12	0	0	0	12	0	7.2	0	0	91.7	0	0	12/08/2012
Djibouti	6	0	0	0	6	0	2.1	0	0	66.7	0	0	4	0	0	1	3	0	2.2	1	0	75.0	0	0	12/08/2012
Egypt	1023	0	0	0	1022	1	3.3	0	0	92.6	0	0	639	0	0	73	566	0	3.2	0	0	90.5	0	0	09/08/2012
Iran	603	0	0	0	601	2	3.1	0	0	91.4	0	0	410	0	0	12	398	1	3.4	3	0	92.9	0	0	12/08/2012
Iraq	530	0	0	0	530	0	3.7	0	0	89.2	0	0	304	0	0	44	260	0	3.4	17	9	89.1	0	0	09/08/2012
Jordan	30	0	0	0	30	0	1.3	0	0	96.7	0	0	18	0	0	6	12	0	1.2	1	0	88.9	0	0	02/08/2012
Kuwait	38	0	0	0	38	0	5.1	0	0	92.1	0	0	22	0	0	2	20	0	4.7	1	0	90.9	0	0	08/07/2012
Lebanon	22	0	0	0	22	0	2.0	0	0	45.5	0	0	19	0	0	10	9	0	2.5	6	0	47.4	0	0	10/08/2012
Libya	35	0	0	0	35	0	1.7	0	0	100.0	0	0	27	0	0	4	23	0	2.1	0	0	100.0	0	0	11/08/2012
Morocco	76	0	0	0	76	0	0.8	0	0	80.3	0	0	44	0	0	17	27	0	0.7	6	0	75.0	0	0	28/07/2012
Oman	39	0	0	0	39	0	5.1	0	0	97.4	0	0	18	0	0	0	18	0	3.7	0	0	100.0	0	0	12/08/2012
Pakistan	5762	198	31	0	5533	0	7.3	0	0	87.5	196	2	2769	29	0	219	2521	0	5.8	70	4	90.5	27#	3#	12/08/2012
Palestine	17	0	0	0	17	0	1.1	0	0	100.0	0	0	12	0	0	6	6	0	1.2	1	0	91.7	0	0	12/08/2012
Qatar	6	0	0	0	6	0	2.6	0	0	83.3	0	0	10	0	0	7	3	0	7.0	4	0	90.0	0	0	08/08/2012
Saudi Arabia	213	0	0	0	213	0	2.5	0	0	99.1	0	0	145	0	0	23	122	0	2.7	0	0	94.5	0	0	12/08/2012
Somalia	172	0	1	0	162	9	3.4	0	0	98.3	0	0	86	0	1	12	73	0	2.7	2	0	96.5	0	0	10/08/2012
Sudan	362	0	0	0	362	0	2.4	0	0	96.7	0	0	250	0	0	9	240	1	2.6	0	0	96.0	0	0	12/08/2012
South Sudan	341	0	0	0	340	1	4.5	0	0	93.3	0	0	176	0	0	33	142	1	3.4	6	0	94.9	0	0	10/08/2012
Syria	168	0	0	0	168	0	1.7	0	0	93.5	0	0	72	0	0	3	69	0	1.2	1	0	88.9	0	0	12/08/2012
Tunisia	47	0	0	0	47	0	1.8	0	0	93.6	0	0	32	0	0	8	24	0	2.0	1	0	68.8	0	0	10/07/2012
U.A.E	25	0	0	0	25	0	2.5	0	0	100.0	0	0	29	0	0	1	28	0	4.7	0	0	96.6	0	0	12/08/2012
Yemen	386	0	0	0	376	10	3.5	0	0	91.5	0	0	275	0	0	41	232	2	3.8	1	0	93.8	0	0	12/08/2012
EMR	11742	278	45	0	11395	24	4.8	0	0	90.0	276	2	6505	46	4	615	5836	5	4.3	121	13	91.3	44	3	
2010	11338	169	31	0	11129	10	4.6	0	0	90.9	137	32													

* Confirmed polio cases refer to wild isolation from AFP cases or from contacts of negative index AFP cases

One AFP case in Pakistan had co infection P1 & P3 from 2 contacts P1 & P3

** Non-polio AFP per 100,000 children <15 years

*** Adequate here refers to two stool specimens collected at least 24 hours apart, within 14 days of paralysis onset

**** AFP cases co infected with P1 and P3 are counted separately as wild isolates



Table 4: Investigation of contacts of AFP cases with paralysis onset in 2011 up to Week (32/12)/ Ending on : (12/08/12)

Country	No. of AFP cases	No. of eligible AFP cases for contact sampling*	% of eligible AFP cases with contact samplings	% of eligible AFP cases with 3+ contacts	Total number of Contacts**	% of contacts under 5 years	% of contacts with specimens collected within 7 days of notification of index	% Contact specimens in lab within 3 days of collection	% Contact specimens positive for NPEV	% Contact specimens positive for Sabin like virus	No. of contacts positive for wild virus	% of wild polio virus isolation from contacts	No. of Contacts positive for VDPVs	No. of -ve index AFP cases identified positive by contact	No. of district infected from contacts
Afghanistan	1132	88	85.2	84.1	515	94.2	74.4	31.9	23.2	4.0	0	0.0		0	0
Bahrain	12	1	100.0	0.0	1	0.0	100.0	0.0	0.0	0.0	0	0.0		0	0
Djibouti	4	1	100.0	100.0	8	75.0	100.0	0.0	0.0	50.0	0	0.0		0	0
Egypt	639	66	80.3	80.3	237	78.5	44.3	100.0	18.3	1.8	0	0.0		0	0
Iran	410	29	93.1	79.3	105	78.1	31.4	77.1	1.9	1.0	0	0.0		0	0
Iraq	304	33	72.7	57.6	79	62.0	46.8	67.1	3.8	0.0	0	0.0		0	0
Jordan	18	2	0.0	0.0	0						0			0	0
Kuwait	22	2	50.0	50.0	60	48.3	68.3	100.0	0.0	0.0	0	0.0		0	0
Lebanon	19	10	50.0	30.0	13	15.4	76.9	15.4	15.4	0.0	0	0.0		0	0
Libya	27	0			0						0			0	0
Morocco	44	11	45.5	27.3	29	34.5	17.2	96.2	0.0	0.0	0	0.0		0	0
Oman	18	0			56	87.5	94.6	100.0	14.6	2.1	0	0.0		0	0
Pakistan	2769	263	87.1	84.4	865	91.7	58.8	68.3	24.1	4.3	4	0.5		2	1
Palestine	12	1	0.0	0.0	0						0			0	0
Qatar	10	1	0.0	0.0	0						0			0	0
Saudi Arabia	145	8	62.5	62.5	36	50.0	66.7	80.0	0.0	0.0	0	0.0		0	0
Somalia	86	3	100.0	100.0	257	91.8	99.2	8.8	15.7	3.7	0	0.0		0	0
Sudan	250	10	80.0	80.0	181	78.5	54.7	35.7	12.3	0.6	0	0.0		0	0
South Sudan	176	9	100.0	100.0	500	82.2	90.4	1.0	8.5	1.5	0	0.0		0	0
Syria	72	8	62.5	37.5	18	77.8	16.7	70.6	0.0	0.0	0	0.0		0	0
Tunisia	32	10	30.0	10.0	25	8.0	32.0	80.0	0.0	0.0	0	0.0		0	0
U.A.E.	29	1	0.0	0.0	0						0			0	0
Yemen	275	17	88.2	82.4	130	57.7	56.9	0.0	13.2	18.4	0	0.0		0	0
Grand Total 2012	6505	574	81.7	77.0	3115	83.1	67.4	48.3	16.8	3.1	4	0.1		2	1
Grand Total 2011	11742	1191	81.4	78.8	6064	85.7	69.4	51.4	18.6	3.8	33	0.6	16	18	9

* Eligible refers to AFP cases with inadequate stool specimens

** Total number of contacts from eligible AFP cases and from other AFP cases as per with country criteria for contact sampling

Last wild contacts in EMRO, 01/01/2012- 12/08/2012

Year	Country	Count of wild contacts	Date of Most Recent stool collection
2012	Pakistan	4	31/01/2012
2012 Total		4	31/01/2012



Table 5: Laboratory investigation of AFP cases with paralysis onset in 2012 up to Week (32/12)/ Ending on : (12/08/12)

Country	Polio laboratories Sequencing performed by CDC and RIVM laboratories	AFP cases with specimens	Preliminary virus isolation results of AFP cases						Poliovirus intratypic differentiation results #										Indicators				Latest report Date			
			Referred for ITD		NPEV only	Negative	Pending		Type 1			Type 2			Type 3			Discordant pending sequence	NPEV by PCR	Non-EV	Pending ITD	% specimens positive for NPEV*		% AFP cases with culture results within 14 days	% AFP cases with ITD results within 7 days	% AFP cases with ITD results within 45 days of onset**
			L20B+	L20B-/NPEV			received < / = 14 days	received > 14 days ago	Wild	Sabin	VDPV	Wild	Sabin	VDPV	Wild	Sabin	VDPV									
Afghanistan	RRL Pakistan	1101	71	9	210	756	54	1	16	23		6			44			1			17%	100%	99%	98%	11/08/2012	
Bahrain	PNL Oman	11			1	10															6%	100%		82%	12/08/2012	
Djibouti	NPL Kenya	4				4															0%			100%	12/08/2012	
Egypt**	RRL Egypt	609	14	3	101	461	21	9		10		2		6			1	2	3		16%	94%	100%	99%	13/08/2012	
Iran	NPL Iran	423	18		17	372	16			4		1	1	5					10		3%	99%	100%	99%	11/08/2012	
Iraq	NPL Iraq, RRL Egypt	303	10	1	40	221	18	14				1		1							13%	100%	100%	50%	09/08/2012	
Jordan	NPL Jordan, RRL Tunisia	19				19															8%	95%			12/08/2012	
Kuwait	RRL Kuwait	30				29	1														1%	66%		100%	12/08/2012	
Lebanon	RRL Egypt	34	2		6	26						1		1				1			15%	100%	100%	88%	13/08/2012	
Libya	RRL Tunisia	26			1	25															4%	100%		100%	13/07/2012	
Morocco	NPL Morocco, RRL Tunisia	48				42	4	2													0%	95%		98%	10/08/2012	
Oman	NPL Oman	18	1			17				1											14%	100%	100%	100%	12/08/2012	
Pakistan	RRL Pakistan	2927	160	18	584	2018	146	1	25	64		22		2	84			3			18%	100%	99%	98%	11/08/2012	
Palestine & UNRWA		12			2	7	1	2													22%	11%		78%	12/08/2012	
Qatar	NPL Oman	10	1			9													1		0%	100%	100%	100%	12/08/2012	
Saudi Arabia	NPL Saudi Arabia, NPL Oman	146	6		4	134	2			1		4		2							2%	96%	100%	92%	12/08/2012	
Somalia	NPL Kenya	85	2		17	57	4	5		1		1		1							22%	3%		96%	10/08/2012	
Sudan	NPL Sudan, RRL Egypt	249	4		33	205	7			4		1	1	1			2				13%	92%	100%	100%	12/08/2012	
South Sudan	NPL Kenya	175	6		18	125		26		1		1	1	5							12%	0%		92%	10/08/2012	
Syria	NPL Syria, RRL Tunisia	69			2	66		1													2%	100%			05/08/2012	
Tunisia	RRL Tunisia	36	2		1	28		5				2		1							2%	90%	50%	94%	13/07/2012	
U.A.E	NPL Oman	28				28															0%	100%		89%	12/08/2012	
Yemen	RRL Egypt	249	20	4	38	176	8	1		6		10	1	9	1		2				14%	90%	100%	89%	13/08/2012	
Total EMR 2012		6612	317	35	1075	4835	282	67	41	115		52	4	2	160	1	3	9	14		15%	95%	99%	97%		
Total EMR 2011		11584	668	62	2056	8794			258	183	2	109	18	2	222		2	8	35	2	16%	94%	98%	94%		

* Specimens from all sources including non-AFP cases, excluding environmental samples

** This indicator reflects surveillance and laboratory activities

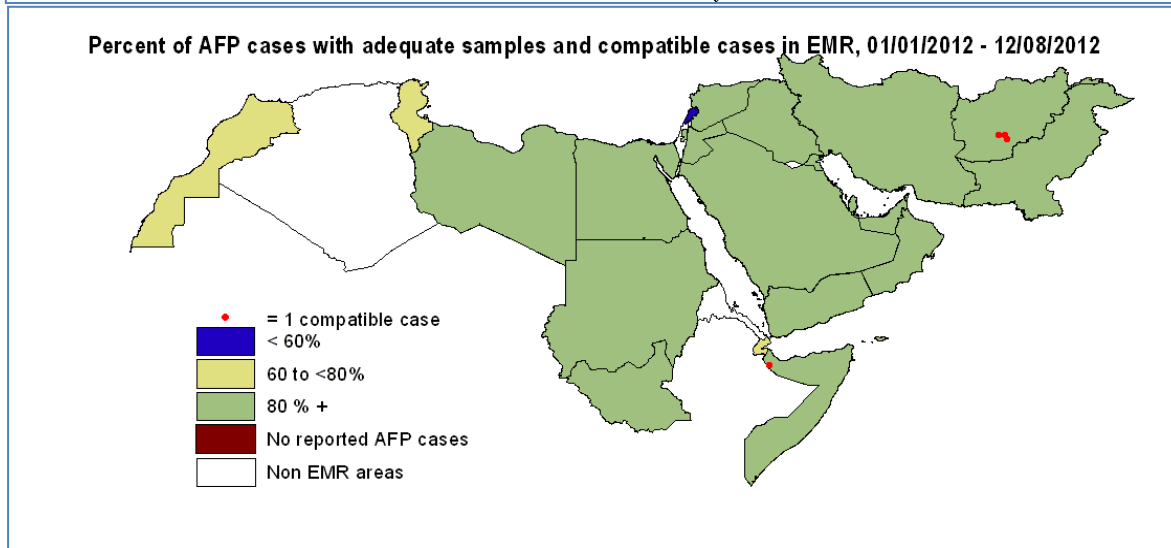
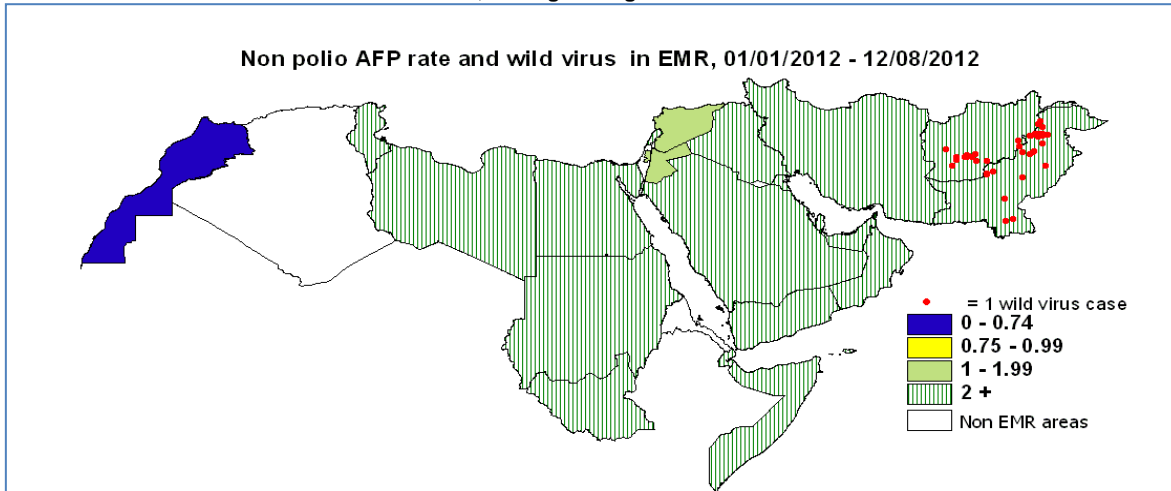
*** Environmental surveillance initiated in Egypt in September 2000 showed the following:

Year	2000	2001	2002	2003	2004	2005	2006	2007	2008	2009	2010	2011	2012
Negative	52	55	136	299	469	499	492	458	444	481	415	448	223
Pending													27
Wild	2	75	26	12	13	2			2		1		
Grand Total	54	130	162	311	482	501	492	458	446	481	416	448	250

In 2008, out of 446 samples, 2 positive for wild virus in Giza governorate (Al Haram Site) genomic sequence data indicate importation from Ethiopia / South Sudan & Cairo governorate (Al Haggana 2) genomic sequence data indicate nearest importation from India. In 2 010, 1 positive sample for wild virus in Aswan governorate (Aswan City) genomic sequence data indicate nearest importation from Sudan.

****Environmental surveillance initiated in Pakistan in August 2009 showed the following:

Status	2009				2010				2011				2012																						
	KHIBALDIA TOWN	KHIGADAP TOWN	KHIGULSHAN-EIQBAL TOWN	LAHORE	KHIBALDIA TOWN	KHIGADAP TOWN	KHIGULSHAN-EIQBAL TOWN	LAHORE	KHIBALDIA TOWN	KHIGADAP TOWN	KHIGULSHAN-EIQBAL TOWN	LAHORE	PESHAWAR	RAWALPINDI	QUETTA	MULTAN	KHIBALDIA TOWN	KHIGADAP TOWN	KHIGULSHAN-EIQBAL TOWN	LAHORE	PESHAWAR	RAWALPINDI	QUETTA	MULTAN	SUKKUR	HYDERABAD									
Negative	9	3	5	10	27	10	11	12	27	2	2	4	9	77	8	8	10	17	5	1	4	15	68	8	12	12	6	3	2	11	15	1	70		
pending																																			
Wild	1	8	7	2	18	6	20	12	6	12	5	9	9	79	4	28	14	19	19	11	20	21	136	8	1	14	10	4	2	4	5	1	49		
Grand Total	10	11	12	12	45	16	31	24	33	14	7	13	18	156	12	36	24	36	24	12	24	36	204	8	22	15	22	14	7	14	21	8	1	132	

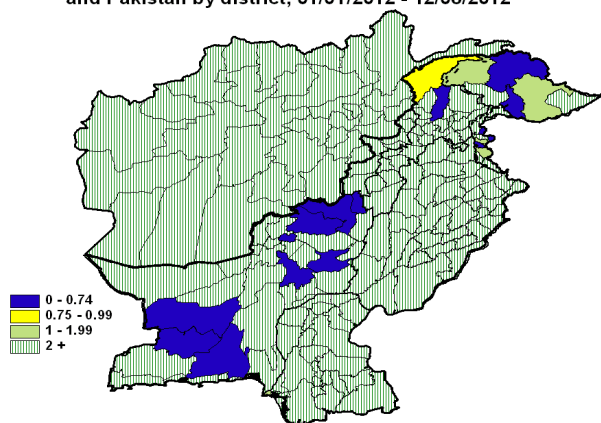


Wild polio cases by country and date of onset of paralysis in EMR, 2011-12

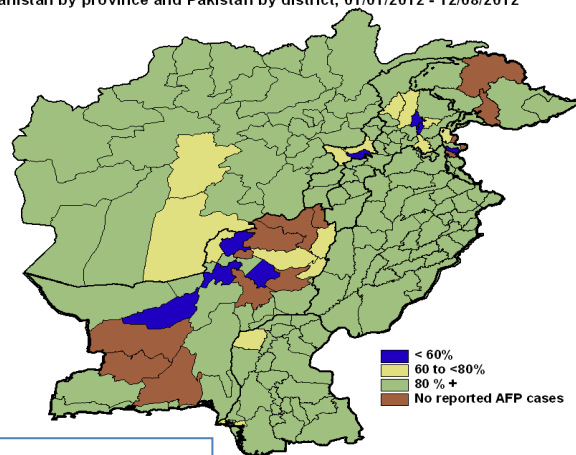
Year	COUNTRY	P1			P3			P1P3			Total Count	Total First Case	Total Last Case
		Count	First Case	Last Case	Count	First Case	Last Case	Count	First Case	Last Case			
2012	AFG	17	01/01/2012	21/07/2012							17	01/01/2012	21/07/2012
	PAK	26	01/01/2012	21/07/2012	2	19/02/2012	18/04/2012	1	04/01/2012	04/01/2012	29	01/01/2012	21/07/2012
2012 Total		43	01/01/2012	21/07/2012	2	19/02/2012	18/04/2012	1	04/01/2012	04/01/2012		01/01/2012	21/07/2012



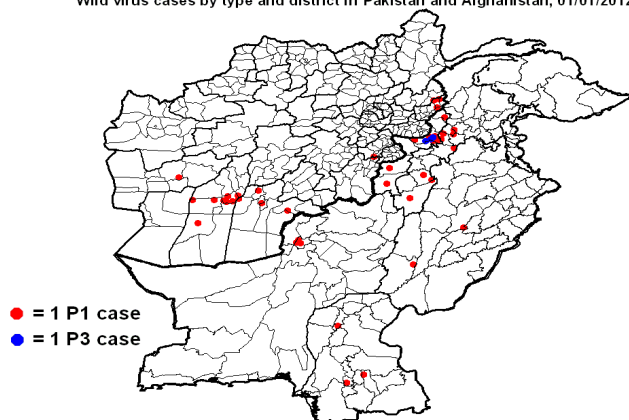
Non polio AFP rate in Afghanistan by province and Pakistan by district, 01/01/2012 - 12/08/2012



Percent of AFP cases with adequate samples in Afghanistan by province and Pakistan by district, 01/01/2012 - 12/08/2012



Wild virus cases by type and district in Pakistan and Afghanistan, 01/01/2012 - 12/08/2012



Wild polio cases by district and date of onset of paralysis in Pakistan, 2012

PROVINCE	DISTRICT	P1			P3			P1P3			Total Count	Total First case	Total Last case
		Count	First case	Last case	Count	First case	Last case	Count	First case	Last case			
KHYBER PAKHTOON	MARDAN	1	21/07/2012	21/07/2012							1	21/07/2012	21/07/2012
	LAKKIMRWT	2	16/01/2012	19/07/2012							2	16/01/2012	19/07/2012
	CHARSADA	1	12/07/2012	12/07/2012							1	12/07/2012	12/07/2012
	PESHAWAR	2	10/01/2012	13/06/2012							2	10/01/2012	13/06/2012
	DIKHAN	1	11/01/2012	11/01/2012							1	11/01/2012	11/01/2012
	KOHAT	1	11/01/2012	11/01/2012							1	11/01/2012	11/01/2012
FATA	BAJOUR	1	12/07/2012	12/07/2012							1	12/07/2012	12/07/2012
	KHYBER	7	06/01/2012	02/07/2012	2	19/02/2012	18/04/2012	1	04/01/2012	04/01/2012	10	04/01/2012	02/07/2012
	WAZIR-S	1	13/05/2012	13/05/2012							1	13/05/2012	13/05/2012
	WAZIR-N	1	10/02/2012	10/02/2012							1	10/02/2012	10/02/2012
BALUCHISTAN	QUETTA	3	01/01/2012	22/06/2012							3	01/01/2012	22/06/2012
PUNJAB	RAJANPUR	1	21/05/2012	21/05/2012							1	21/05/2012	21/05/2012
	JHANG	1	20/01/2012	20/01/2012							1	20/01/2012	20/01/2012
SINDH	LARKANA	1	21/05/2012	21/05/2012							1	21/05/2012	21/05/2012
	HYDERABAD	1	27/01/2012	27/01/2012							1	27/01/2012	27/01/2012
	MIRPURKHAS	1	03/01/2012	03/01/2012							1	03/01/2012	03/01/2012
Grand Total		26	01/01/2012	21/07/2012	2	19/02/2012	18/04/2012	1	04/01/2012	04/01/2012		01/01/2012	21/07/2012

Khyber P1 case (NW/34/12/005) was identified as wild by a positive contact with date of stool collection 30/01/2012

Khyber P1P3 case (NW/34/12/002) was identified as wild by positive contacts with date of stool collection 30/01/2012

Wild polio cases by district and date of onset of paralysis in Afghanistan, 2012

PROVINCE	DISTRICT	P1		
		Count	First case	Last case
KUNAR	BAR KUNAR	2	30/06/2012	21/07/2012
	NARI	1	01/07/2012	01/07/2012
HILMAND	SANGIN	1	20/07/2012	20/07/2012
	NAHRI SARRAJ	4	03/05/2012	05/07/2012
	REG (H)	1	28/06/2012	28/06/2012
	NAD ALI	2	01/01/2012	23/01/2012
FARAH	BALA BULUK	1	02/06/2012	02/06/2012
KANDAHAR	MAYWAND	1	18/05/2012	18/05/2012
	KHAKREZ	1	14/03/2012	14/03/2012
	KANDAHAR	1	15/01/2012	15/01/2012
	ARGHISTAN	1	03/01/2012	03/01/2012
	JADRAN	1	15/02/2012	15/02/2012
PAKTYA	JADRAN	1	15/02/2012	15/02/2012
Grand Total		17	01/01/2012	21/07/2012