



World Health Organization – Regional Office for Eastern Mediterranean

AFP SURVEILLANCE

23-Apr-12

Week 16, ending 22 April 2012

Number 707

Table 1: Acute Flaccid Paralysis (AFP) cases by week of onset

| Country | Reported AFP cases by week of onset - Week (16/12)/ Ending on : (22/04/12) | | | | | | | | | | | | | | |
|------------------|--|----------------|-------------------------|-------------------|-------------------|-------------------|-------------------|-------------------|-------------------|-------------------|-------------------|-------------------|-------------------|-------------------|-------------------|
| | Total AFP 2010 | Total AFP 2011 | Total AFP to date, 2012 | W 05 05 Feb 12 | W 06 12 Feb 12 | W 07 19 Feb 12 | W 08 26 Feb 12 | W 09 04 Mar 12 | W 10 11 Mar 12 | W 11 18 Mar 12 | W 12 25 Mar 12 | W 13 01 Apr 12 | W 14 08 Apr 12 | W 15 15 Apr 12 | W 16 22 Apr 12 |
| Afghanistan | 1572 | 1831 | 548 | 28 | 33 | 34 | 49 | 38 | 34 | 35 | 48 | 38 | 44 | 19 | 1 |
| Bahrain | 10 | 10 | 7 | 1 | 0 | 2 | 1 | 1 | 0 | 1 | 0 | 0 | 0 | 0 | 0 |
| Djibouti | 3 | 6 | 4 | 0 | 0 | 0 | 0 | 0 | 0 | 0 | 0 | 2 | 1 | 0 | 0 |
| Egypt | 1151 | 1023 | 320 | 11 | 18 | 28 | 22 | 24 | 25 | 26 | 26 | 28 | 24 | 15 | 2 |
| Iran | 622 | 603 | 192 | 14 | 24 | 11 | 16 | 20 | 8 | 6 | 8 | 7 | 17 | 3 | 1 |
| Iraq | 489 | 530 | 149 | 9 | 6 | 14 | 5 | 14 | 13 | 12 | 6 | 11 | 10 | 4 | |
| Jordan **** | 40 | 30 | 6 | 1 | 1 | 0 | 0 | 0 | 1 | 0 | 0 | 0 | 0 | 0 | |
| Kuwait | 24 | 38 | 9 | 1 | 1 | 0 | 1 | 0 | 1 | 0 | 0 | 1 | 0 | 2 | 0 |
| Lebanon **** | 19 | 22 | 8 | 0 | 0 | 0 | 0 | 0 | 1 | 0 | 0 | 1 | 0 | | |
| Libya | 46 | 35 | 16 | 1 | 1 | 2 | 1 | 3 | 1 | 0 | 1 | 1 | 1 | 0 | |
| Morocco | 100 | 76 | 19 | 1 | 2 | 1 | 1 | 3 | 0 | 2 | 2 | 0 | 1 | 1 | |
| Oman | 33 | 39 | 8 | 0 | 0 | 1 | 1 | 0 | 0 | 1 | 1 | 0 | 1 | 0 | 0 |
| Pakistan | 5393 | 5712 | 1217 | 88 | 91 | 94 | 86 | 95 | 94 | 92 | 67 | 66 | 59 | 17 | |
| Palestine **** | 15 | 17 | 4 | 0 | 0 | 1 | 0 | 0 | 0 | 0 | 0 | 0 | 0 | 2 | 0 |
| Qatar | 5 | 6 | 6 | 0 | 1 | 1 | 2 | 0 | 0 | 0 | 0 | 0 | 0 | 0 | 0 |
| Saudi Arabia | 239 | 213 | 91 | 4 | 9 | 11 | 3 | 10 | 6 | 2 | 8 | 5 | 6 | 3 | 0 |
| Somalia | 164 | 172 | 39 | 7 | 2 | 2 | 6 | 7 | 2 | 1 | 1 | 1 | 1 | 1 | 1 |
| Sudan | 408 | 361 | 143 | 11 | 9 | 11 | 9 | 13 | 12 | 11 | 4 | 10 | 10 | 5 | |
| South Sudan | 310 | 342 | 71 | 6 | 5 | 9 | 3 | 8 | 3 | 4 | 3 | 4 | 2 | 0 | |
| Syria **** | 194 | 168 | 35 | 2 | 2 | 1 | 2 | 2 | 4 | 3 | 3 | 1 | 4 | 0 | 0 |
| Tunisia | 57 | 47 | 12 | 2 | 2 | 1 | 1 | 2 | 1 | 1 | 1 | 0 | | | |
| U.A.E | 18 | 25 | 16 | 0 | 2 | 3 | 1 | 0 | 1 | 0 | 1 | 1 | 1 | 0 | 0 |
| Yemen | 426 | 386 | 132 | 7 | 6 | 11 | 15 | 18 | 11 | 10 | 4 | 8 | 7 | 6 | |
| Total EMR | 11338 | 11692 | 3052 | 194 | 215 | 238 | 225 | 258 | 218 | 207 | 184 | 185 | 189 | 78 | 5 |

No data = No report received

Table 2: Confirmed polio cases by month of onset

| Country | Total year 2010 | Total year 2011 | 22/04 | | Confirmed polio cases by month of onset | | | | | | | | | | | |
|------------------|-----------------|-----------------|-----------|-----------|---|-----------|-----------|-------------|----------------|--------------|---------------|---------------|--------------|---------------|------------|------------|
| | | | 2011 | 2012 | May 2011 | June 2011 | July 2011 | August 2011 | September 2011 | October 2011 | November 2011 | December 2011 | January 2012 | February 2012 | March 2012 | April 2012 |
| Afghanistan | 25 | 80 | 1 | 6 | 4 | 4 | 1 | 16 | 14 | 13 | 15 | 10 | 4 | 1 | 1 | |
| Bahrain | 0 | 0 | 0 | 0 | 0 | 0 | 0 | 0 | 0 | 0 | 0 | 0 | 0 | 0 | 0 | |
| Djibouti | 0 | 0 | 0 | 0 | 0 | 0 | 0 | 0 | 0 | 0 | 0 | 0 | 0 | 0 | 0 | |
| Egypt | 0 | 0 | 0 | 0 | 0 | 0 | 0 | 0 | 0 | 0 | 0 | 0 | 0 | 0 | 0 | |
| Iran | 0 | 0 | 0 | 0 | 0 | 0 | 0 | 0 | 0 | 0 | 0 | 0 | 0 | 0 | 0 | |
| Iraq | 0 | 0 | 0 | 0 | 0 | 0 | 0 | 0 | 0 | 0 | 0 | 0 | 0 | 0 | 0 | |
| Jordan **** | 0 | 0 | 0 | 0 | 0 | 0 | 0 | 0 | 0 | 0 | 0 | 0 | 0 | 0 | 0 | |
| Kuwait | 0 | 0 | 0 | 0 | 0 | 0 | 0 | 0 | 0 | 0 | 0 | 0 | 0 | 0 | 0 | |
| Lebanon **** | 0 | 0 | 0 | 0 | 0 | 0 | 0 | 0 | 0 | 0 | 0 | 0 | 0 | 0 | 0 | |
| Libya | 0 | 0 | 0 | 0 | 0 | 0 | 0 | 0 | 0 | 0 | 0 | 0 | 0 | 0 | 0 | |
| Morocco | 0 | 0 | 0 | 0 | 0 | 0 | 0 | 0 | 0 | 0 | 0 | 0 | 0 | 0 | 0 | |
| Oman | 0 | 0 | 0 | 0 | 0 | 0 | 0 | 0 | 0 | 0 | 0 | 0 | 0 | 0 | 0 | |
| Pakistan | 144 | 198 | 38 | 15 | 13 | 8 | 11 | 17 | 34 | 37 | 18 | 21 | 11 | 3 | 1 | |
| Palestine **** | 0 | 0 | 0 | 0 | 0 | 0 | 0 | 0 | 0 | 0 | 0 | 0 | 0 | 0 | 0 | |
| Qatar | 0 | 0 | 0 | 0 | 0 | 0 | 0 | 0 | 0 | 0 | 0 | 0 | 0 | 0 | 0 | |
| Saudi Arabia | 0 | 0 | 0 | 0 | 0 | 0 | 0 | 0 | 0 | 0 | 0 | 0 | 0 | 0 | 0 | |
| Somalia | 0 | 0 | 0 | 0 | 0 | 0 | 0 | 0 | 0 | 0 | 0 | 0 | 0 | 0 | 0 | |
| Sudan | 0 | 0 | 0 | 0 | 0 | 0 | 0 | 0 | 0 | 0 | 0 | 0 | 0 | 0 | 0 | |
| South Sudan | 0 | 0 | 0 | 0 | 0 | 0 | 0 | 0 | 0 | 0 | 0 | 0 | 0 | 0 | 0 | |
| Syria **** | 0 | 0 | 0 | 0 | 0 | 0 | 0 | 0 | 0 | 0 | 0 | 0 | 0 | 0 | 0 | |
| Tunisia | 0 | 0 | 0 | 0 | 0 | 0 | 0 | 0 | 0 | 0 | 0 | 0 | 0 | 0 | 0 | |
| U.A.E | 0 | 0 | 0 | 0 | 0 | 0 | 0 | 0 | 0 | 0 | 0 | 0 | 0 | 0 | 0 | |
| Yemen | 0 | 0 | 0 | 0 | 0 | 0 | 0 | 0 | 0 | 0 | 0 | 0 | 0 | 0 | 0 | |
| Total EMR | 169 | 278 | 39 | 21 | 17 | 12 | 12 | 33 | 48 | 50 | 33 | 31 | 15 | 4 | 2 | 0 |

**** UNRWA cases are included with those of country of residence



Table 3: Investigation of AFP cases with paralysis onset in 2011 & 2012 up to Week (16/12)/ Ending on : (22/04/12)

| COUNTRY | 2011 | | | | | | | | | | | | 2012 | | | | | | | | | | | | Latest line List Date | | | | |
|--------------|----------------------------|-------------------------------|------------------|------------------------|---------------------------|------|-----------------------|--|--|-------------------------------|--------------------|--------------------|----------------------------|-------------------------------|------------------|------------------------|---------------------------|------|----------------------------------|--|--|-------------------------------|--------------------|--------------------|-----------------------|----------|--|--------------------|--|
| | AFP | | | | | | | | | | Specimen | | Wild isolates **** | | AFP | | | | | | | | | | | Specimen | | Wild isolates **** | |
| | Total AFP cases onset 2011 | Case classification | | | | | Non polio AFP rate ** | AFP cases pending classification > 90 days from onset of paralysis | AFP cases pending classification and lab > 90 days from onset of paralysis | % with *** adequate specimens | Wild P1 Poliovirus | Wild P3 Poliovirus | Total AFP cases onset 2012 | Case classification | | | | | Annualized Non polio AFP rate ** | AFP cases pending classification > 90 days from onset of paralysis | AFP cases pending classification and lab > 90 days from onset of paralysis | % with *** adequate specimens | Wild P1 Poliovirus | Wild P3 Poliovirus | | | | | |
| | | Total Confirmed Polio Cases * | Polio Compatible | Pending Classification | Discarded (non polio AFP) | VDPV | | | | | | | | Total Confirmed Polio Cases * | Polio Compatible | Pending Classification | Discarded (non polio AFP) | VDPV | | | | | | | | | | | |
| Afghanistan | 1831 | 80 | 13 | 0 | 1737 | 1 | 10.0 | 0 | 0 | 92.1 | 80 | 0 | 548 | 6 | 0 | 110 | 432 | 0 | 10.1 | 4 | 0 | 91.4 | 6 | 0 | 23/04/2012 | | | | |
| Bahrain | 10 | 0 | 0 | 0 | 10 | 0 | 3.8 | 0 | 0 | 90.0 | 0 | 0 | 7 | 0 | 0 | 5 | 2 | 0 | 8.3 | 0 | 0 | 100.0 | 0 | 0 | 22/04/2012 | | | | |
| Djibouti | 6 | 0 | 0 | 1 | 5 | 0 | 2.1 | 1 | 0 | 66.7 | 0 | 0 | 4 | 0 | 0 | 4 | 0 | 0 | 4.4 | 1 | 0 | 75.0 | 0 | 0 | 23/04/2012 | | | | |
| Egypt | 1023 | 0 | 0 | 0 | 1022 | 1 | 3.3 | 0 | 0 | 92.6 | 0 | 0 | 320 | 0 | 0 | 69 | 251 | 0 | 3.2 | 0 | 0 | 89.7 | 0 | 0 | 22/04/2012 | | | | |
| Iran | 603 | 0 | 0 | 0 | 601 | 2 | 3.4 | 0 | 0 | 91.4 | 0 | 0 | 192 | 0 | 0 | 27 | 165 | 0 | 3.5 | 2 | 1 | 93.2 | 0 | 0 | 22/04/2012 | | | | |
| Iraq | 530 | 0 | 0 | 0 | 530 | 0 | 3.7 | 0 | 0 | 89.2 | 0 | 0 | 149 | 0 | 0 | 36 | 113 | 0 | 3.3 | 4 | 0 | 91.9 | 0 | 0 | 19/04/2012 | | | | |
| Jordan | 30 | 0 | 0 | 1 | 29 | 0 | 1.3 | 1 | 0 | 96.7 | 0 | 0 | 6 | 0 | 0 | 6 | 0 | 0 | 0.8 | 0 | 0 | 83.3 | 0 | 0 | 15/03/2012 | | | | |
| Kuwait | 38 | 0 | 0 | 0 | 38 | 0 | 5.1 | 0 | 0 | 92.1 | 0 | 0 | 9 | 0 | 0 | 3 | 6 | 0 | 3.8 | 0 | 0 | 88.9 | 0 | 0 | 22/04/2012 | | | | |
| Lebanon | 22 | 0 | 0 | 0 | 22 | 0 | 2.0 | 0 | 0 | 45.5 | 0 | 0 | 8 | 0 | 0 | 3 | 5 | 0 | 1.8 | 1 | 0 | 62.5 | 0 | 0 | 11/04/2012 | | | | |
| Libya | 35 | 0 | 0 | 0 | 35 | 0 | 1.7 | 0 | 0 | 100.0 | 0 | 0 | 16 | 0 | 0 | 3 | 13 | 0 | 2.5 | 0 | 0 | 100.0 | 0 | 0 | 21/04/2012 | | | | |
| Morocco | 76 | 0 | 0 | 1 | 75 | 0 | 0.8 | 1 | 0 | 80.3 | 0 | 0 | 19 | 0 | 0 | 8 | 11 | 0 | 0.6 | 0 | 0 | 84.2 | 0 | 0 | 20/04/3012 | | | | |
| Oman | 39 | 0 | 0 | 0 | 39 | 0 | 5.1 | 0 | 0 | 97.4 | 0 | 0 | 8 | 0 | 0 | 1 | 7 | 0 | 3.3 | 0 | 0 | 100.0 | 0 | 0 | 22/04/2012 | | | | |
| Pakistan | 5712 | 198 | 21 | 59 | 5434 | 0 | 7.2 | 59 | 0 | 87.6 | 196 | 2 | 1217 | 15 | 0 | 175 | 1027 | 0 | 5.1 | 17 | 1 | 91.6 | 14 # | 2 # | 21/04/2012 | | | | |
| Palestine | 17 | 0 | 0 | 0 | 17 | 0 | 1.1 | 0 | 0 | 100.0 | 0 | 0 | 4 | 0 | 0 | 4 | 0 | 0 | 0.8 | 0 | 0 | 100.0 | 0 | 0 | 22/04/2012 | | | | |
| Qatar | 6 | 0 | 0 | 0 | 6 | 0 | 2.6 | 0 | 0 | 83.3 | 0 | 0 | 6 | 0 | 0 | 6 | 0 | 0 | 8.3 | 0 | 0 | 83.3 | 0 | 0 | 22/04/2012 | | | | |
| Saudi Arabia | 213 | 0 | 0 | 0 | 213 | 0 | 2.5 | 0 | 0 | 99.1 | 0 | 0 | 91 | 0 | 0 | 57 | 34 | 0 | 3.3 | 0 | 0 | 98.9 | 0 | 0 | 22/04/2012 | | | | |
| Somalia | 172 | 0 | 0 | 3 | 162 | 7 | 3.4 | 3 | 2 | 98.8 | 0 | 0 | 39 | 0 | 0 | 6 | 33 | 0 | 2.4 | 0 | 0 | 97.4 | 0 | 0 | 19/04/2012 | | | | |
| Sudan | 361 | 0 | 0 | 0 | 361 | 0 | 2.4 | 0 | 0 | 97.0 | 0 | 0 | 143 | 0 | 0 | 25 | 118 | 0 | 3.0 | 0 | 0 | 95.8 | 0 | 0 | 22/04/2012 | | | | |
| South Sudan | 342 | 0 | 0 | 3 | 338 | 1 | 4.5 | 3 | 0 | 93.0 | 0 | 0 | 71 | 0 | 0 | 10 | 60 | 1 | 2.8 | 1 | 0 | 93.0 | 0 | 0 | 19/04/2012 | | | | |
| Syria | 168 | 0 | 0 | 0 | 168 | 0 | 1.7 | 0 | 0 | 93.5 | 0 | 0 | 35 | 0 | 0 | 14 | 21 | 0 | 1.1 | 1 | 1 | 91.4 | 0 | 0 | 22/04/2012 | | | | |
| Tunisia | 47 | 0 | 0 | 0 | 47 | 0 | 1.8 | 0 | 0 | 93.6 | 0 | 0 | 12 | 0 | 0 | 7 | 5 | 0 | 1.5 | 0 | 0 | 66.7 | 0 | 0 | 01/04/2012 | | | | |
| U.A.E | 25 | 0 | 0 | 0 | 25 | 0 | 2.5 | 0 | 0 | 100.0 | 0 | 0 | 16 | 0 | 0 | 3 | 13 | 0 | 5.1 | 0 | 0 | 100.0 | 0 | 0 | 22/04/2012 | | | | |
| Yemen | 386 | 0 | 0 | 0 | 376 | 10 | 3.5 | 0 | 0 | 91.5 | 0 | 0 | 132 | 0 | 0 | 44 | 88 | 0 | 3.6 | 0 | 0 | 97.0 | 0 | 0 | 21/04/2012 | | | | |
| EMR | 11692 | 278 | 34 | 68 | 11290 | 22 | 4.8 | 68 | 2 | 90.1 | 276 | 2 | 3052 | 21 | 0 | 626 | 2404 | 1 | 4.1 | 31 | 3 | 92.1 | 20 | 2 | | | | | |
| 2010 | 11338 | 169 | 31 | 0 | 11129 | 10 | 4.6 | 0 | 0 | 90.9 | 137 | 32 | | | | | | | | | | | | | | | | | |

* Confirmed polio cases refer to wild isolation from AFP cases or from contacts of negative index AFP cases

** Non-polio AFP per 100,000 children <15 years

*** Adequate here refers to two stool specimens collected at least 24 hours apart, within 14 days of paralysis onset

**** AFP cases co infected with P1 and P3 are counted separately as wild isolates

One AFP case in Pakistan had co infection P1 & P3 from 2 contacts P1 & P3



Table 4: Investigation of contacts of AFP cases with paralysis onset in 2011 up to Week (16/12)/ Ending on : (22/04/12)

| Country | No. of AFP cases | No. of eligible AFP cases for contact sampling* | % of eligible AFP cases with contact samplings | % of eligible AFP cases with 3+ contacts | Total number of Contacts* * | % of contacts under 5 years | % of contacts with specimens collected within 7 days of notification of index | % Contact specimens in lab within 3 days of collection | % Contact specimens positive for NPEV | % Contact specimens positive for Sabin like virus | No. of contacts positive for wild virus | % of wild polio virus isolation from contacts | No. of Contacts positive for VDPVs | No. of -ve index AFP cases identified positive by contact | No. of district identified infected from contacts |
|-------------------------|------------------|---|--|--|--------------------------------|-----------------------------|---|--|---------------------------------------|---|---|---|------------------------------------|---|---|
| Afghanistan | 548 | 47 | 42.6 | 42.6 | 163 | 98.2 | 68.7 | 28.4 | 17.2 | 2.6 | 0 | 0.0 | | 0 | 0 |
| Bahrain | 7 | 0 | | | 0 | | | | | | 0 | | | 0 | 0 |
| Djibouti | 4 | 1 | 100.0 | 100.0 | 8 | 75.0 | 100.0 | | | | 0 | | | 0 | 0 |
| Egypt | 320 | 37 | 64.9 | 64.9 | 111 | 72.1 | 48.6 | 100.0 | 13.8 | 1.1 | 0 | 0.0 | | 0 | 0 |
| Iran | 192 | 13 | 69.2 | 53.8 | 46 | 84.8 | 28.3 | 69.6 | 0.0 | 2.2 | 0 | 0.0 | | 0 | 0 |
| Iraq | 149 | 12 | 66.7 | 50.0 | 24 | 50.0 | 37.5 | 50.0 | 8.3 | 0.0 | 0 | 0.0 | | 0 | 0 |
| Jordan | 6 | 1 | 0.0 | 0.0 | 0 | | | | | | 0 | | | 0 | 0 |
| Kuwait | 9 | 1 | 0.0 | 0.0 | 21 | 57.1 | 33.3 | 100.0 | 0.0 | 0.0 | 0 | 0.0 | | 0 | 0 |
| Lebanon | 8 | 3 | 66.7 | 33.3 | 4 | 25.0 | 100.0 | 0.0 | 0.0 | 0.0 | 0 | 0.0 | | 0 | 0 |
| Libya | 16 | 0 | | | 0 | | | | | | 0 | | | 0 | 0 |
| Morocco | 19 | 3 | 66.7 | 33.3 | 12 | 58.3 | 0.0 | 100.0 | 0.0 | 0.0 | 0 | 0.0 | | 0 | 0 |
| Oman | 8 | 0 | | | 26 | 88.5 | 92.3 | 100.0 | 16.7 | 5.6 | 0 | 0.0 | | 0 | 0 |
| Pakistan | 1217 | 102 | 82.4 | 80.4 | 314 | 91.7 | 66.6 | 70.7 | 12.8 | 5.9 | 4 | 1.5 | | 2 | 1 |
| Palestine | 4 | 0 | | | 0 | | | | | | 0 | | | 0 | 0 |
| Qatar | 6 | 1 | 0.0 | 0.0 | 0 | | | | | | 0 | | | 0 | 0 |
| Saudi Arabia | 91 | 1 | 0.0 | 0.0 | 6 | 66.7 | 50.0 | | | | 0 | | | 0 | 0 |
| Somalia | 39 | 1 | 100.0 | 100.0 | 111 | 93.7 | 99.1 | 10.8 | 18.3 | 4.3 | 0 | 0.0 | | 0 | 0 |
| Sudan | 143 | 6 | 83.3 | 83.3 | 83 | 75.9 | 73.5 | 24.1 | 24.1 | 1.9 | 0 | 0.0 | | 0 | 0 |
| South Sudan | 71 | 5 | 60.0 | 60.0 | 180 | 85.0 | 92.2 | 2.4 | 9.5 | 2.4 | 0 | 0.0 | | 0 | 0 |
| Syria | 35 | 3 | 33.3 | 33.3 | 3 | 100.0 | 0.0 | | | | 0 | | | 0 | 0 |
| Tunisia | 12 | 4 | 0.0 | 0.0 | 0 | | | | | | 0 | | | 0 | 0 |
| U.A.E. | 16 | 0 | | | 0 | | | | | | 0 | | | 0 | 0 |
| Yemen | 132 | 4 | 100.0 | 100.0 | 52 | 67.3 | 78.8 | 0.0 | 17.6 | 0.0 | 0 | 0.0 | | 0 | 0 |
| Grand Total 2012 | 3052 | 245 | 66.9 | 63.7 | 1164 | 85.1 | 70.5 | 46.5 | 13.0 | 3.3 | 4 | 0.4 | | 2 | 1 |
| Grand Total 2011 | 11692 | 1180 | 81.2 | 78.4 | 6040 | 85.9 | 69.4 | 51.4 | 18.6 | 3.9 | 33 | 0.6 | 13 | 18 | 9 |

* Eligible refers to AFP cases with inadequate stool specimens

** Total number of contacts from eligible AFP cases and from other AFP cases as per with country criteria for contact sampling

Last wild contacts in EMRO, 01/01/2011- 22/04/2012

| Year | Country | Count of wild contacts | Date of Most Recent stool collection |
|-------------------|-------------|------------------------|--------------------------------------|
| 2011 | Afghanistan | 14 | 25/12/2011 |
| | Pakistan | 19 | 24/12/2011 |
| 2011 Total | | 33 | 25/12/2011 |
| 2012 | Pakistan | 4 | 31/01/2012 |
| 2012 Total | | 4 | 31/01/2012 |



Table 5: Laboratory investigation of AFP cases with paralysis onset in 2012 up to Week (16/12)/ Ending on : (22/04/12)

| Country | Polio laboratories Sequencing performed by CDC and RIVM laboratories | AFP cases with specimens | Preliminary virus isolation results of AFP cases | | | | | | Poliovirus intratypic differentiation results # | | | | | | | | | | Indicators | | | | Latest report Date | | | | | |
|-----------------------|---|--------------------------|--|------------|-------------|-------------|------------------------|------------------------|---|------------|----------|--------|-------|------------|-----------|----------|------------|-----------------------------|-------------|--------|-------------|--------------------------------|--------------------|---|--|--|------|------------|
| | | | Referred for ITD | | NPEV only | Negative | Pending | | Type 1 | | | Type 2 | | | Type 3 | | | Discordant pending sequence | NPEV by PCR | Non-EV | Pending ITD | % specimens positive for NPEV* | | % AFP cases with culture results within 14 days | % AFP cases with ITD results within 7 days | % AFP cases with ITD results within 45 days of onset** | | |
| | | | L20B+ | L20B+/NPEV | | | received < / = 14 days | received > 14 days ago | Wild | Sabin | VDPV | Wild | Sabin | VDPV | Wild | Sabin | VDPV | | | | | | | | | | | |
| Afghanistan | RRL Pakistan | 533 | 40 | 1 | 65 | 363 | 64 | | 6 | 12 | | | | 3 | | | 24 | | | | | | | 11% | 100% | 98% | 97% | 20/04/2012 |
| Bahrain | PNL Oman | 7 | | | 1 | 6 | | | | | | | | | | | | | | | | | | 11% | 100% | | 100% | 22/04/2012 |
| Djibouti | NPL Kenya | 4 | | | | | 2 | 2 | | | | | | | | | | | | | | | | | | | | 23/04/2012 |
| Egypt*** | RRL Egypt | 302 | 6 | | 36 | 217 | 33 | 10 | | 3 | | | | | | | | | | 2 | | | | 13% | 93% | 100% | 100% | 19/04/2012 |
| Iran | NPL Iran | 196 | 8 | | 2 | 168 | 17 | 1 | | 4 | | | 1 | 1 | | 3 | | | 1 | | 2 | | | 1% | 97% | 100% | 99% | 21/04/2012 |
| Iraq | NPL Iraq, RRL Egypt | 148 | 5 | | 16 | 97 | 21 | 10 | | | | | 1 | | | 1 | | | | | | | | 13% | 100% | 100% | 50% | 19/04/2012 |
| Jordan | NPL Jordan, RRL Tunisia | 10 | | | | 6 | 4 | | | | | | | | | | | | | | | | | 6% | 100% | | | 22/04/2012 |
| Kuwait | RRL Kuwait | 15 | | | | 13 | 2 | | | | | | | | | | | | | | | | | 0% | 100% | | 100% | 19/04/2012 |
| Lebanon | RRL Egypt | 9 | | | | 8 | 1 | | | | | | | | | | | | | | | | | 0% | 100% | | 88% | 19/04/2012 |
| Libya | RRL Tunisia | 18 | | | 1 | 13 | 4 | | | | | | | | | | | | | | | | | 7% | 100% | | 100% | 20/04/2012 |
| Morocco | NPL Morocco, RRL Tunisia | 19 | | | | 16 | 2 | 1 | | | | | | | | | | | | | | | | 0% | 100% | | 100% | 13/04/2012 |
| Oman | NPL Oman | 9 | | | | 8 | 1 | | | | | | | | | | | | | | | | | 15% | 100% | | 100% | 22/04/2012 |
| Pakistan | RRL Pakistan | 1379 | 81 | 7 | 169 | 964 | 158 | | 12 | 34 | | | | 9 | | 1 | 43 | | | | | | | 11% | 99% | 100% | 98% | 20/04/2012 |
| Palestine & UNRWA | | 4 | | | 1 | 1 | 2 | | | | | | | | | | | | | | | | | 50% | 50% | | 100% | 22/04/2012 |
| Qatar | NPL Oman | 7 | 1 | | | 6 | | | | | | | | | | | | | | 1 | | | | 0% | 100% | 100% | 100% | 15/04/2012 |
| Saudi Arabia | NPL Saudi Arabia, NPL Oman | 96 | 2 | | 4 | 79 | 9 | 2 | | | | | | 1 | | | | | | | | | | 4% | 98% | 100% | 83% | 21/04/2012 |
| Somalia | NPL Kenya | 38 | 1 | | 7 | 25 | 3 | 2 | | 1 | | | | | | | | | | | | | | 21% | 6% | | 100% | 19/04/2012 |
| Sudan | NPL Sudan, RRL Egypt | 142 | | | 26 | 95 | 20 | 1 | | | | | | | | 1 | | | | | | | | 21% | 98% | 100% | 100% | 22/04/2012 |
| South Sudan | NPL Kenya | 70 | 3 | | 8 | 52 | | 7 | | 1 | | | | | 1 | | 2 | | | | | | | 13% | 0% | | 97% | 19/04/2012 |
| Syria | NPL Syria, RRL Tunisia | 28 | | | 1 | 23 | | 4 | | | | | | | | | | | | | | | | 4% | 100% | | | 18/04/2012 |
| Tunisia | RRL Tunisia | 15 | 1 | | | 12 | 2 | | | | | | | | | 1 | | | | | | | | 0% | 100% | 100% | 92% | 20/04/2012 |
| U.A.E | NPL Oman | 16 | | | | 13 | 3 | | | | | | | | | | | | | | | | | 0% | 100% | | 100% | 22/04/2012 |
| Yemen | NPL Oman | 119 | 10 | | 14 | 80 | 14 | | | 3 | | | | | | 3 | | | | | 1 | | | 11% | 89% | 100% | 85% | 22/04/2012 |
| Total EMR 2012 | | 3184 | 158 | 8 | 351 | 2265 | 362 | 40 | 18 | 58 | | | | 19 | 2 | 1 | 77 | | | | | | 11% | 95% | 99% | 98% | | |
| Total EMR 2011 | | 11586 | 668 | 62 | 2056 | 8795 | | 3 | 258 | 183 | 2 | | | 111 | 16 | 2 | 222 | | | | | | 16% | 94% | 98% | 94% | | |

* Specimens from all sources including non-AFP cases, excluding environmental samples

** This indicator reflects surveillance and laboratory activities

*** Environmental surveillance initiated in Egypt in September 2000 showed the following:

| Year | 2000 | 2001 | 2002 | 2003 | 2004 | 2005 | 2006 | 2007 | 2008 | 2009 | 2010 | 2011 | 2012 | Grand Total |
|-------------|------|------|------|------|------|------|------|------|------|------|------|------|------|-------------|
| Negative | 52 | 55 | 136 | 299 | 469 | 499 | 492 | 458 | 444 | 481 | 415 | 448 | 78 | 4326 |
| Pending | | | | | | | | | | | | | 45 | 45 |
| Wild | 2 | 75 | 26 | 12 | 13 | 2 | | 2 | | | 1 | | | 133 |
| Grand Total | 54 | 130 | 162 | 311 | 482 | 501 | 492 | 458 | 446 | 481 | 416 | 448 | 123 | 4504 |

In 2008, out of 446 samples, 2 positive for wild virus in Giza governorate (Al Haram Site) genomic sequence data indicate importation from Ethiopia / South Sudan & Cairo governorate (Al Haggana 2) genomic sequence data indicate nearest importation from India. In 2010, 1 positive sample for wild virus in Aswan governorate (Aswan City) genomic sequence data indicate nearest importation from Sudan.

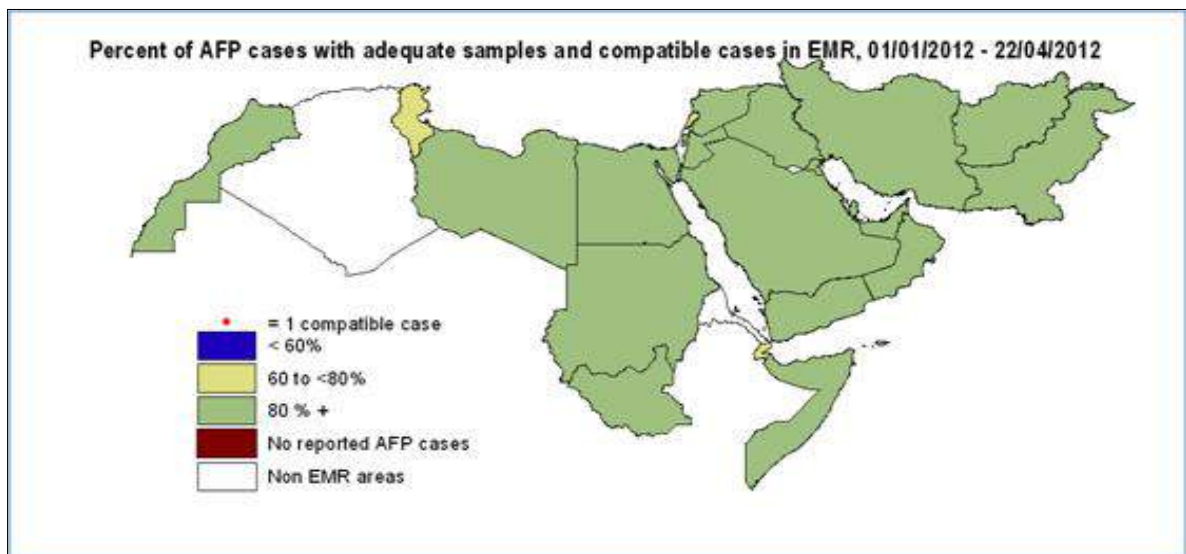
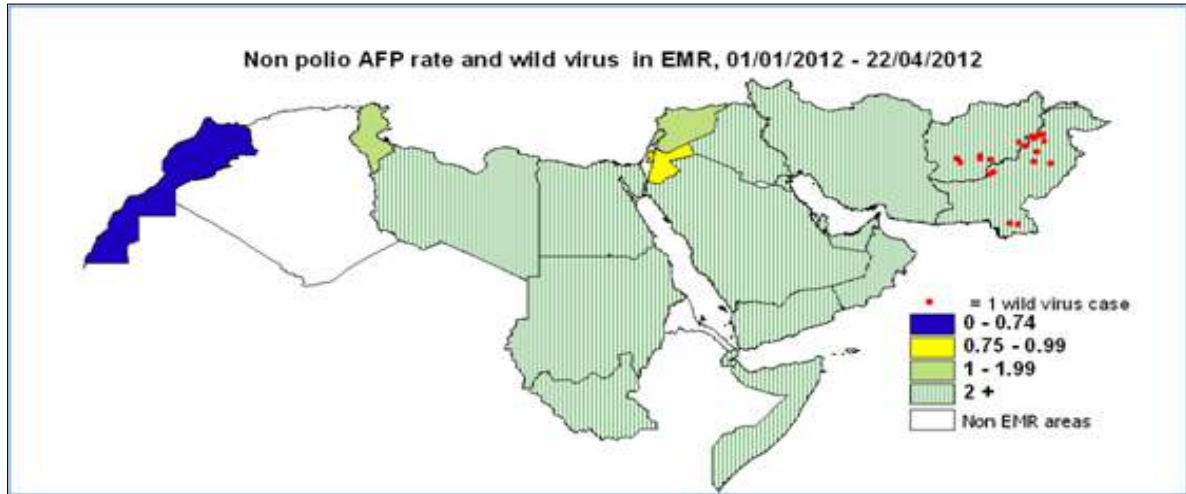
****Environmental surveillance initiated in Pakistan in August 2009 showed the following:

| Year | 2009 | | | | | | | | | | 2009 Total | 2010 | | | | | | | | | | 2010 Total | 2011 | | | | | | | | | | 2011 Total | 2012 | | | | | | | | | | 2012 Total |
|-------------|----------------|---------------|------------------------|--------|----------------|---------------|------------------------|--------|----------|------------|------------|--------|--------|----------------|---------------|------------------------|--------|----------|------------|--------|--------|------------|----------------|---------------|------------------------|--------|----------|------------|--------|--------|----------------|---------------|------------|------------------------|--------|----------|------------|--------|--------|--|--|--|--|------------|
| | KHIBALDIA TOWN | KHIGADAP TOWN | KHIGULSHANE-IGBAL TOWN | LAHORE | KHIBALDIA TOWN | KHIGADAP TOWN | KHIGULSHANE-IGBAL TOWN | LAHORE | PESHAWAR | RAWALPINDI | | QUETTA | MULTAN | KHIBALDIA TOWN | KHIGADAP TOWN | KHIGULSHANE-IGBAL TOWN | LAHORE | PESHAWAR | RAWALPINDI | QUETTA | MULTAN | | KHIBALDIA TOWN | KHIGADAP TOWN | KHIGULSHANE-IGBAL TOWN | LAHORE | PESHAWAR | RAWALPINDI | QUETTA | MULTAN | KHIBALDIA TOWN | KHIGADAP TOWN | | KHIGULSHANE-IGBAL TOWN | LAHORE | PESHAWAR | RAWALPINDI | QUETTA | MULTAN | | | | | |
| Negative | 9 | 3 | 5 | 10 | 27 | 10 | 11 | 12 | 27 | 2 | 2 | 4 | 9 | 77 | 8 | 8 | 10 | 17 | 5 | 1 | 4 | 15 | 68 | 3 | 4 | 6 | 2 | 1 | 4 | 6 | 2 | 1 | 4 | 6 | 26 | | | | | | | | | |
| Pending | | | | | | | | | | | | | | | | | | | | | | | | | | | | | | | | | | | | | 12 | | | | | | | |
| Wild | 1 | 8 | 7 | 2 | 18 | 6 | 20 | 12 | 6 | 12 | 5 | 9 | 9 | 79 | 4 | 28 | 14 | 19 | 19 | 11 | 20 | 21 | 136 | 4 | 7 | 6 | 2 | 2 | 3 | 3 | 2 | 3 | 3 | 24 | | | | | | | | | | |
| Grand Total | 10 | 11 | 12 | 12 | 45 | 16 | 31 | 24 | 33 | 14 | 7 | 13 | 18 | 156 | 12 | 36 | 24 | 36 | 24 | 12 | 24 | 36 | 204 | 3 | 11 | 8 | 12 | 7 | 3 | 7 | 11 | 11 | 62 | | | | | | | | | | | |



World Health Organization – Regional Office for Eastern Mediterranean
AFP SURVEILLANCE
Week 16, ending 22 April 2012

23-Apr-12
Number 707



Wild polio cases by country and date of onset of paralysis in EMR, 2011 & 2012

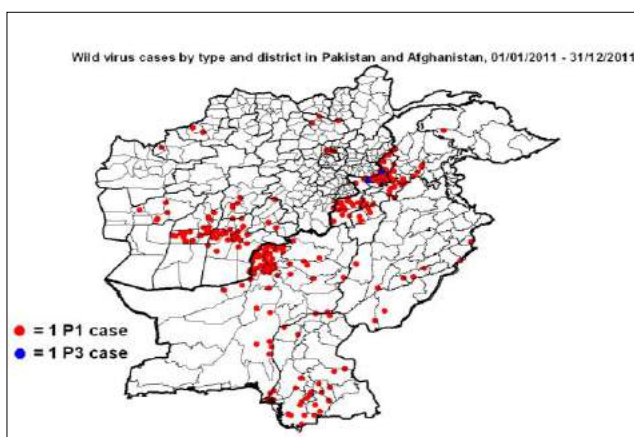
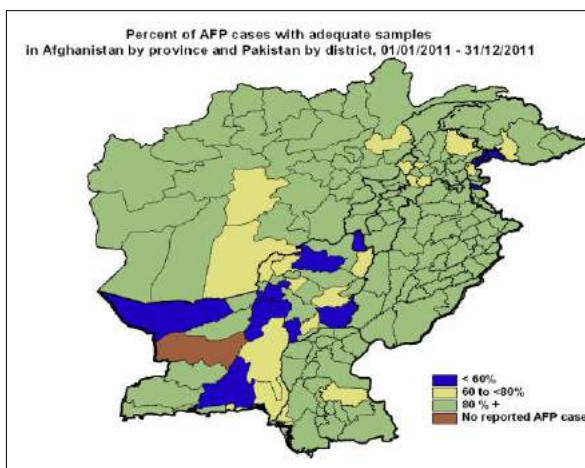
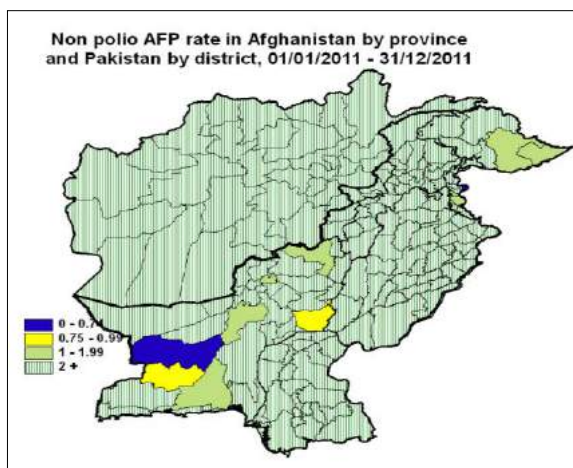
| Year | COUNTRY | P1 | | | P3 | | | P1P3 | | | Total Count | First Case | Last Case |
|------------|---------|-------|------------|------------|-------|------------|------------|-------|------------|------------|-------------|------------|------------|
| | | Count | First Case | Last Case | Count | First Case | Last Case | Count | First Case | Last Case | | | |
| 2011 | AFG | 80 | 11/01/2011 | 16/12/2011 | | | | | | | 80 | 11/01/2011 | 16/12/2011 |
| | PAK | 196 | 03/01/2011 | 28/12/2011 | 2 | 09/06/2011 | 27/09/2011 | | | | 198 | 03/01/2011 | 28/12/2011 |
| 2011 Total | | 276 | 03/01/2011 | 28/12/2011 | 2 | 09/06/2011 | 27/09/2011 | | | | 278 | 03/01/2011 | 28/12/2011 |
| 2012 | AFG | 6 | 01/01/2012 | 14/03/2012 | | | | | | | 6 | 01/01/2012 | 14/03/2012 |
| | PAK | 13 | 01/01/2012 | 11/03/2012 | 1 | 19/02/2012 | 19/02/2012 | 1 | 04/01/2012 | 04/01/2012 | 15 | 01/01/2012 | 11/03/2012 |
| 2012 Total | | 19 | 01/01/2012 | 14/03/2012 | 1 | 19/02/2012 | 19/02/2012 | 1 | 04/01/2012 | 04/01/2012 | 21 | 01/01/2012 | 14/03/2012 |



Wild Polio cases by district and date of onset of paralysis, Afghanistan 2011

| PROVINCE | DISTRICT | P1 | | |
|--------------------|-------------------|-----------|-------------------|-------------------|
| | | Count | First case | Last case |
| KANDAHAR | MAYWAND | 8 | 25/04/2011 | 16/12/2011 |
| | SPIN BOLDAK | 3 | 10/11/2011 | 12/12/2011 |
| | KANDAHAR | 13 | 23/05/2011 | 11/12/2011 |
| | KHAKREZ | 1 | 28/11/2011 | 28/11/2011 |
| | PANJWAYI | 4 | 15/08/2011 | 24/11/2011 |
| | SHAH WALI KOT | 3 | 05/08/2011 | 03/11/2011 |
| | ARGHANDAB (K) | 1 | 25/09/2011 | 25/09/2011 |
| | DAMAN | 2 | 11/01/2011 | 19/06/2011 |
| FARAH | KHAKI SAFED | 1 | 13/12/2011 | 13/12/2011 |
| | BAKWA | 3 | 26/04/2011 | 05/12/2011 |
| | BALA BULUK | 1 | 10/06/2011 | 10/06/2011 |
| HILMAND | NAD ALI | 8 | 05/08/2011 | 03/12/2011 |
| | NAHRI SARRAJ | 5 | 29/05/2011 | 02/12/2011 |
| | LASHKAR GAH | 1 | 16/09/2011 | 16/09/2011 |
| | KAJAKI | 1 | 01/09/2011 | 01/09/2011 |
| | NAWAY_I_BARAKZAYI | 1 | 30/08/2011 | 30/08/2011 |
| | MUSA QALA | 3 | 08/05/2011 | 28/06/2011 |
| BAGHLHAN | KHOST WA FIRING | 1 | 02/12/2011 | 02/12/2011 |
| | BAGHLAN | 1 | 07/10/2011 | 07/10/2011 |
| URUZGAN | DIHRAWUD | 2 | 12/11/2011 | 29/11/2011 |
| | TIRIN KOT | 1 | 23/11/2011 | 23/11/2011 |
| | SHAHIDI HASSAS | 1 | 11/10/2011 | 11/10/2011 |
| | NESH | 1 | 25/09/2011 | 25/09/2011 |
| FARYAB | ALMUR | 2 | 14/10/2011 | 19/11/2011 |
| KAPISA | MAHMUD RAQI | 1 | 14/11/2011 | 14/11/2011 |
| KUNDUZ | ALI ABAD | 1 | 04/11/2011 | 04/11/2011 |
| PARWAN | CHAHARIKAR | 3 | 30/08/2011 | 04/11/2011 |
| PAKTIKA | BARMAL | 1 | 14/10/2011 | 14/10/2011 |
| ZABUL | SHINKAY | 1 | 05/10/2011 | 05/10/2011 |
| | DAYCHOPAN | 1 | 02/10/2011 | 02/10/2011 |
| | QALAT | 1 | 22/09/2011 | 22/09/2011 |
| KUNAR | DANGAM | 1 | 02/10/2011 | 02/10/2011 |
| NANGARHAR | LAL PUR | 1 | 28/09/2011 | 28/09/2011 |
| BADGHIS | MUQR (B) | 1 | 04/09/2011 | 04/09/2011 |
| Grand Total | | 80 | 11/01/2011 | 16/12/2011 |

Kandahar P1 case (AFG/08/11/103) was identified as wild by a positive contact with date of stool collection 30/05/11
 Maywand P1 case (AFG/08/11/110) was identified as wild by a positive contact with date of stool collection 29/05/11
 Bala Buluk P1 case (AFG/03/11/132) was identified as wild by a positive contact with date of stool collection 13/06/11
 Ali Abad P1 case (AFG/01/11/217) was identified as wild by a positive contact with date of stool collection 29/09/2011
 Arghandab (K) P1 case (AFG/08/11/257) was identified as wild by a positive contact with date of stool collection 14/10/11
 Chaharikar P1 case (AFG/05/11/240) was identified as wild by a positive contact with date of stool collection 23/10/211
 Chaharikar P1 case (AFG/05/11/271) was identified as wild by a positive contact with date of stool collection 24/11/2011
 Al Mar P1 case (AFG/02/11/274) was identified as wild by a positive contact with date of stool collection 06/12/2011
 Khaki Safed P1 case (AFG/03/11/283) was identified as wild by a positive contact with date of stool collection 25/12/2011

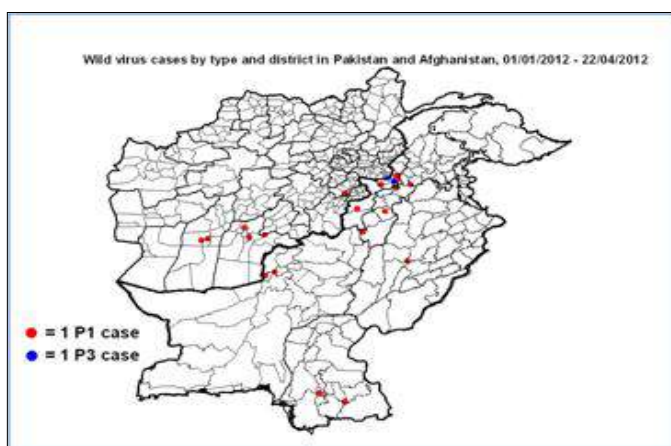
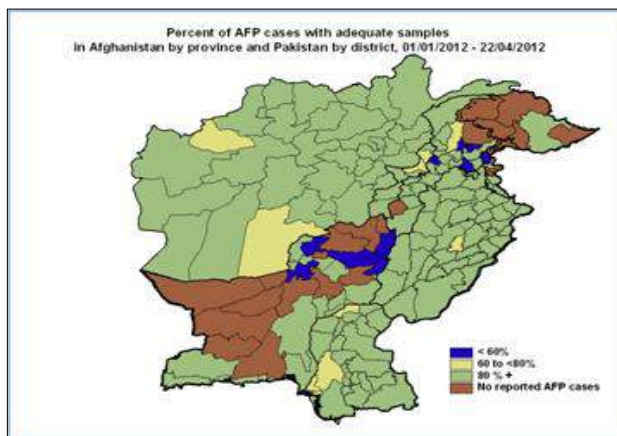
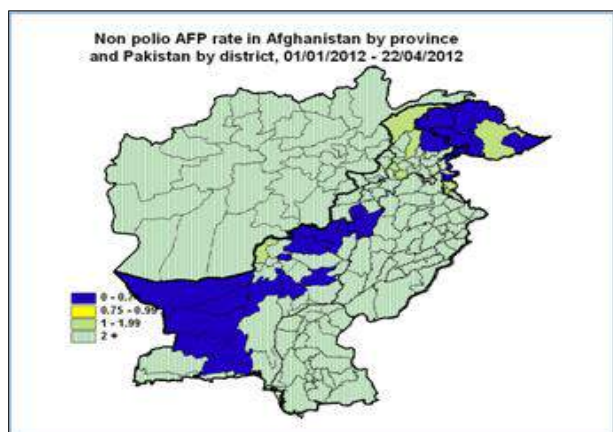


* District RY Khan, Punjab Province, was identified as an infected district by isolating wild type P1 virus from a healthy child with date of stool collection 08/01/2011
 * District Nsirabad, Balochistan Province, was identified as an infected district by isolating wild type P1 virus from a healthy child with date of stool collection 26/01/2011
 * District Faisalabad, Punjab Province, was identified as an infected district by isolating wild type P1 virus from a healthy child with date of stool collection 28/07/2011
 * District Muzfargarh, Punjab Province, was identified as an infected district by isolating wild type P1 virus from a healthy child with date of stool collection 07/08/2011


Wild Polio cases by district and date of onset of paralysis, Pakistan 2011

| PROVINCE | DISTRICT | P1 | | | P3 | | | | | | |
|--------------------|-------------|----------|------------|-------------------|-------------------|------------|-------------------|-------------------|--|--|--|
| | | Count | First case | Last case | Count | First case | Last case | | | | |
| FATA | KHYBER | 23 | 15/01/2011 | 28/12/2011 | 2 | 09/06/2011 | 27/09/2011 | | | | |
| | WAZIR-N | 14 | 18/08/2011 | 08/12/2011 | | | | | | | |
| | BAJOUR | 2 | 24/09/2011 | 11/11/2011 | | | | | | | |
| | WAZIR-S | 4 | 22/07/2011 | 17/10/2011 | | | | | | | |
| | MOHMAND | 4 | 03/01/2011 | 05/07/2011 | | | | | | | |
| | ORAKZAI | 2 | 06/05/2011 | 15/06/2011 | | | | | | | |
| | KURRAM | 1 | 06/03/2011 | 06/03/2011 | | | | | | | |
| KHYBER PAKHTOON | CHARSADA | 1 | 28/12/2011 | 28/12/2011 | | | | | | | |
| | TANK | 3 | 17/11/2011 | 18/12/2011 | | | | | | | |
| | PESHAWAR | 6 | 16/01/2011 | 25/11/2011 | | | | | | | |
| | BANNU | 2 | 21/05/2011 | 24/11/2011 | | | | | | | |
| | KOHAT | 6 | 28/01/2011 | 22/11/2011 | | | | | | | |
| | BUNIR | 3 | 10/09/2011 | 11/11/2011 | | | | | | | |
| | NOWSHERA | 2 | 22/09/2011 | 28/10/2011 | | | | | | | |
| | LAKKIMRWT | 3 | 09/03/2011 | 27/10/2011 | | | | | | | |
| | SWABI | 1 | 14/10/2011 | 14/10/2011 | | | | | | | |
| | DIRUPPER | 1 | 19/09/2011 | 19/09/2011 | | | | | | | |
| | TORGHAR | 2 | 06/04/2011 | 22/05/2011 | | | | | | | |
| | PUNJAB | LAHORE | 1 | 24/12/2011 | | | | 24/12/2011 | | | |
| | | VEHARI | 2 | 16/10/2011 | | | | 12/12/2011 | | | |
| DGKHAN | | 1 | 08/12/2011 | 08/12/2011 | | | | | | | |
| MUZFARGARH | | 1 | 02/12/2011 | 02/12/2011 | | | | | | | |
| BAHAWALPUR | | 1 | 04/11/2011 | 04/11/2011 | | | | | | | |
| RYKHAN | | 1 | 11/10/2011 | 11/10/2011 | | | | | | | |
| LODHRAN | | 1 | 04/09/2011 | 04/09/2011 | | | | | | | |
| OKARA | | 1 | 13/08/2011 | 13/08/2011 | | | | | | | |
| SINDH | BADIN | 4 | 22/02/2011 | 19/12/2011 | | | | | | | |
| | THATTA | 8 | 10/04/2011 | 06/12/2011 | | | | | | | |
| | KHIBALDIA | 2 | 07/10/2011 | 10/11/2011 | | | | | | | |
| | KHIGIQBAL | 1 | 10/10/2011 | 10/10/2011 | | | | | | | |
| | JACOBABAD | 1 | 09/10/2011 | 09/10/2011 | | | | | | | |
| | KASHMORE | 1 | 07/10/2011 | 07/10/2011 | | | | | | | |
| | KAMBAR | 2 | 28/09/2011 | 05/10/2011 | | | | | | | |
| | KHIGADAP | 2 | 05/04/2011 | 21/09/2011 | | | | | | | |
| | KHISITE | 2 | 07/05/2011 | 16/09/2011 | | | | | | | |
| | UMERKOT | 1 | 24/08/2011 | 24/08/2011 | | | | | | | |
| | HYDERABAD | 1 | 19/08/2011 | 19/08/2011 | | | | | | | |
| | JAMSHORO | 1 | 29/05/2011 | 29/05/2011 | | | | | | | |
| | SANGHAR | 2 | 20/01/2011 | 19/04/2011 | | | | | | | |
| | KHISADDAR | 1 | 05/04/2011 | 05/04/2011 | | | | | | | |
| | KHIORANGI | 1 | 29/03/2011 | 29/03/2011 | | | | | | | |
| | TMKHAN | 2 | 18/02/2011 | 04/03/2011 | | | | | | | |
| | T.ALLAHYAR | 1 | 21/01/2011 | 21/01/2011 | | | | | | | |
| | BALOCHISTAN | KABDULAH | 22 | 02/03/2011 | | | | 15/12/2011 | | | |
| KHUZDAR | | 5 | 03/05/2011 | 03/12/2011 | | | | | | | |
| QUETTA | | 15 | 22/06/2011 | 01/12/2011 | | | | | | | |
| HARNAI | | 1 | 26/11/2011 | 26/11/2011 | | | | | | | |
| PISHIN | | 16 | 19/02/2011 | 12/11/2011 | | | | | | | |
| BARKHAN | | 1 | 29/10/2011 | 29/10/2011 | | | | | | | |
| MASTUNG | | 2 | 20/10/2011 | 23/10/2011 | | | | | | | |
| KSAIFULAH | | 2 | 20/09/2011 | 20/10/2011 | | | | | | | |
| LORALAI | | 3 | 05/09/2011 | 30/09/2011 | | | | | | | |
| KALAT | | 1 | 10/08/2011 | 10/08/2011 | | | | | | | |
| DBUGTI | | 1 | 12/07/2011 | 12/07/2011 | | | | | | | |
| KOHLU | | 1 | 08/07/2011 | 08/07/2011 | | | | | | | |
| NOSHKI | | 3 | 01/04/2011 | 28/04/2011 | | | | | | | |
| GILGIT BALTISTAN | | DIAMIR | 1 | 18/05/2011 | 18/05/2011 | | | | | | |
| Grand Total | | | 196 | 03/01/2011 | 28/12/2011 | 2 | 09/06/2011 | 27/09/2011 | | | |

Sanghar P1 case (SD/32/11/005) was identified as wild by a positive contact with date of stool collection 26/01/2011
 Peshawar P1 case (NW/30/11/025) was identified as wild by a positive contact with date of stool collection 10/03/2011
 Torgghar P1 case (NW/15/11/001) was identified as wild by a positive contact with date of stool collection 21/04/2011
 Khuzdar P1 case (BN/54/11/013) was identified as wild by a positive contact with date of stool collection 25/07/2011
 Wazir-S P1 case (NW/65/11/015) was identified as wild by a positive contact with date of stool collection 12/10/2011
 Ksaifulah P1 case (BN/25/11/005) was identified as wild by a positive contact with date of stool collection 21/11/2011
 DGKhan P1 case (PB/81/11/145) was identified as wild by a positive contact with date of stool collection 15/12/2011
 Kabdulah P1 case (BN/14/11/042) was identified as wild by a positive contact with date of stool collection 17/12/2011
 Khuzdar P1 case (BN/54/11/019) was identified as wild by a positive contact with date of stool collection 24/12/2011



Wild Polio cases by district and date of onset of paralysis, Afghanistan 2012

| PROVINCE | DISTRICT | P1 | | |
|-------------|-----------|-------|------------|------------|
| | | Count | First case | Last case |
| KANDAHAR | KHAKREZ | 1 | 14/03/2012 | 14/03/2012 |
| | KANDAHAR | 1 | 15/01/2012 | 15/01/2012 |
| | ARGHISTAN | 1 | 03/01/2012 | 03/01/2012 |
| PAKTYA | JADRAN | 1 | 15/02/2012 | 15/02/2012 |
| HILMAND | NAD ALI | 2 | 01/01/2012 | 23/01/2012 |
| Grand Total | | 6 | 01/01/2012 | 14/03/2012 |

Wild Polio cases by district and date of onset of paralysis, Pakistan 2012

| PROVINCE | DISTRICT | P1 | | | P3 | | | P1P3 | | | Total Count | First case | Last case |
|-----------------|------------|-------|------------|------------|-------|------------|------------|-------|------------|------------|-------------|------------|------------|
| | | Count | First case | Last case | Count | First case | Last case | Count | First case | Last case | | | |
| FATA | KHYBER | 3 | 06/01/2012 | 11/03/2012 | | | | 1 | 04/01/2012 | 04/01/2012 | 5 | 04/01/2012 | 11/03/2012 |
| | WAZIR-N | 1 | 10/02/2012 | 10/02/2012 | | | | | | | 1 | 10/02/2012 | 10/02/2012 |
| SINDH | HYDERABAD | 1 | 27/01/2012 | 27/01/2012 | | | | | | | 1 | 27/01/2012 | 27/01/2012 |
| | MIRPURKHAS | 1 | 03/01/2012 | 03/01/2012 | | | | | | | 1 | 03/01/2012 | 03/01/2012 |
| PUNJAB | JHANG | 1 | 20/01/2012 | 20/01/2012 | | | | | | | 1 | 20/01/2012 | 20/01/2012 |
| KHYBER PAKHTOON | LAKKIMRWT | 1 | 16/01/2012 | 16/01/2012 | | | | | | | 1 | 16/01/2012 | 16/01/2012 |
| | DIKHAN | 1 | 11/01/2012 | 11/01/2012 | | | | | | | 1 | 11/01/2012 | 11/01/2012 |
| | KOHAT | 1 | 11/01/2012 | 11/01/2012 | | | | | | | 1 | 11/01/2012 | 11/01/2012 |
| | PESHAWAR | 1 | 10/01/2012 | 10/01/2012 | | | | | | | 1 | 10/01/2012 | 10/01/2012 |
| BALUCHISTAN | QUETTA | 2 | 01/01/2012 | 06/01/2012 | | | | | | | 2 | 01/01/2012 | 06/01/2012 |
| Grand Total | | 13 | 01/01/2012 | 11/03/2012 | 1 | 19/02/2012 | 19/02/2012 | 1 | 04/01/2012 | 04/01/2012 | 15 | 01/01/2012 | 11/03/2012 |

Khyber P1 case (NW/34/12/005) was identified as wild by a positive contact with date of stool collection 30/01/2012
 Khyber P1P3 case (NW/34/12/002) was identified as wild by positive contacts with date of stool collection 30/01/2012