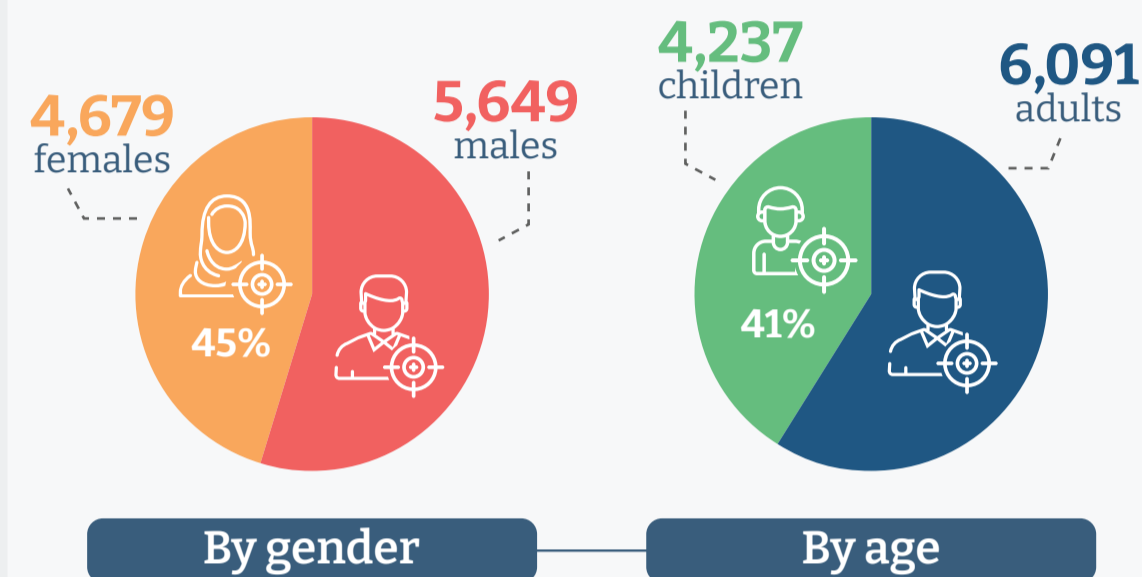


A Month of War

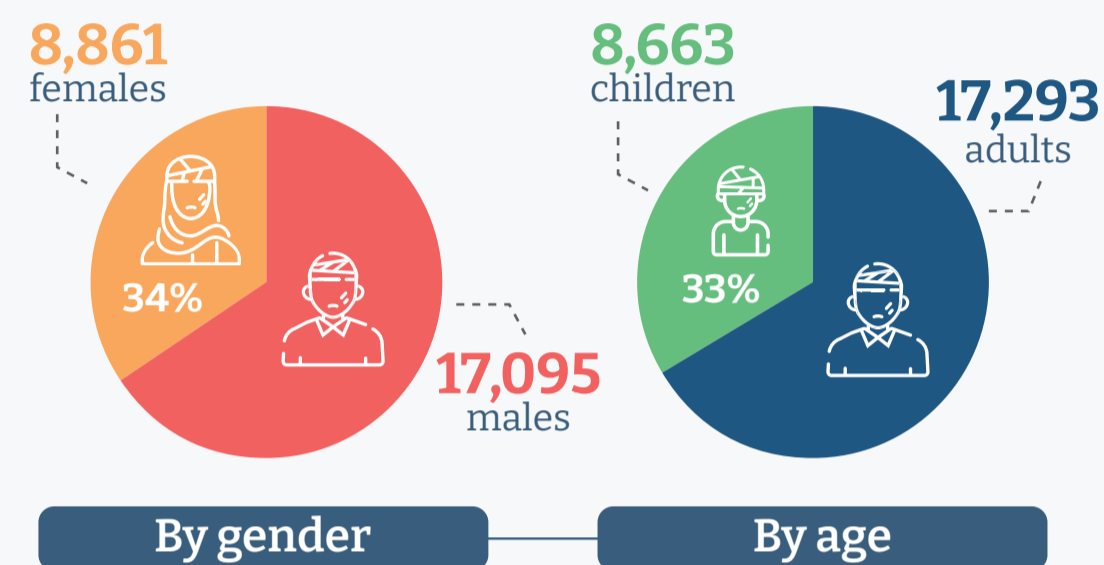
Update 6 November 2023

in Gaza Strip

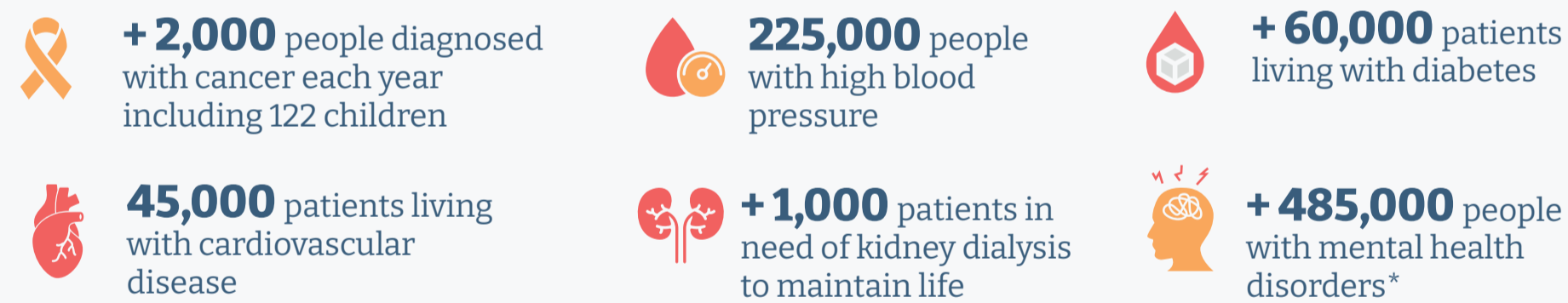
10,328 Fatalities



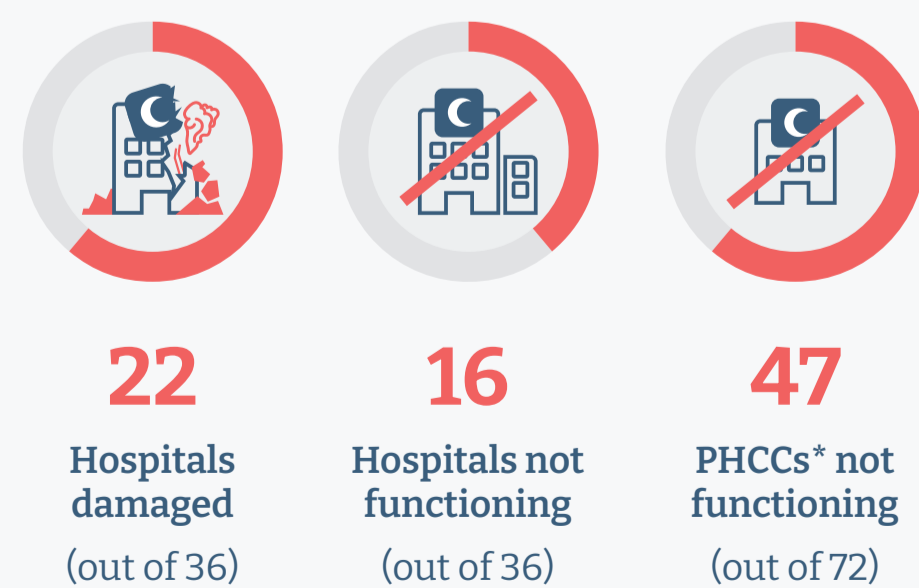
25,956 Injuries



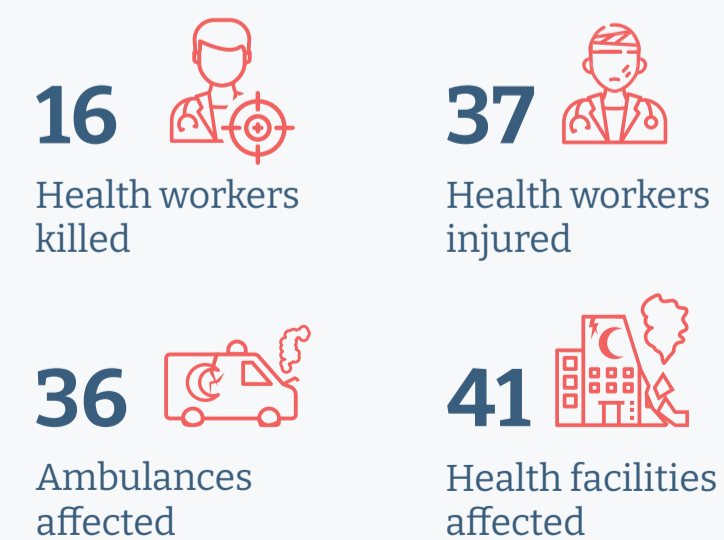
Long-term conditions in Gaza



Health systems functionality



111 Attacks on Health Care



~100 patients per day need access out of Gaza for health care

in West Bank

162 Fatalities



2,300 Injuries



127 Attacks on Health Care

16 Health workers injured

105 Ambulances affected

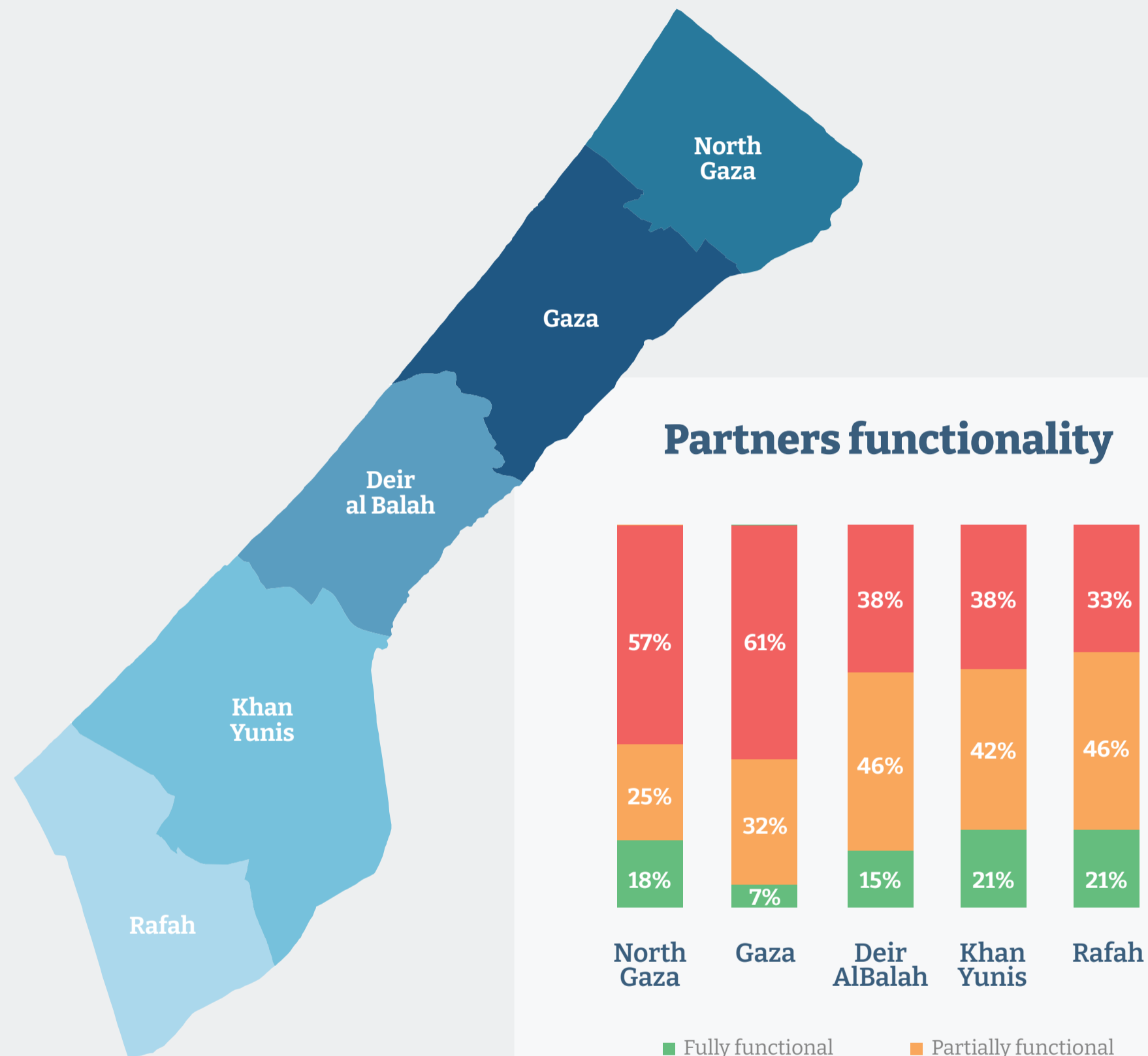
29 communities in West Bank have no access to primary healthcare

+270 patients cannot enter east Jerusalem & Israel to access their cancer treatments

+5,000 Gaza workers and patient/companions stuck sheltering in West Bank.

Health Cluster Partners Operational Challenges

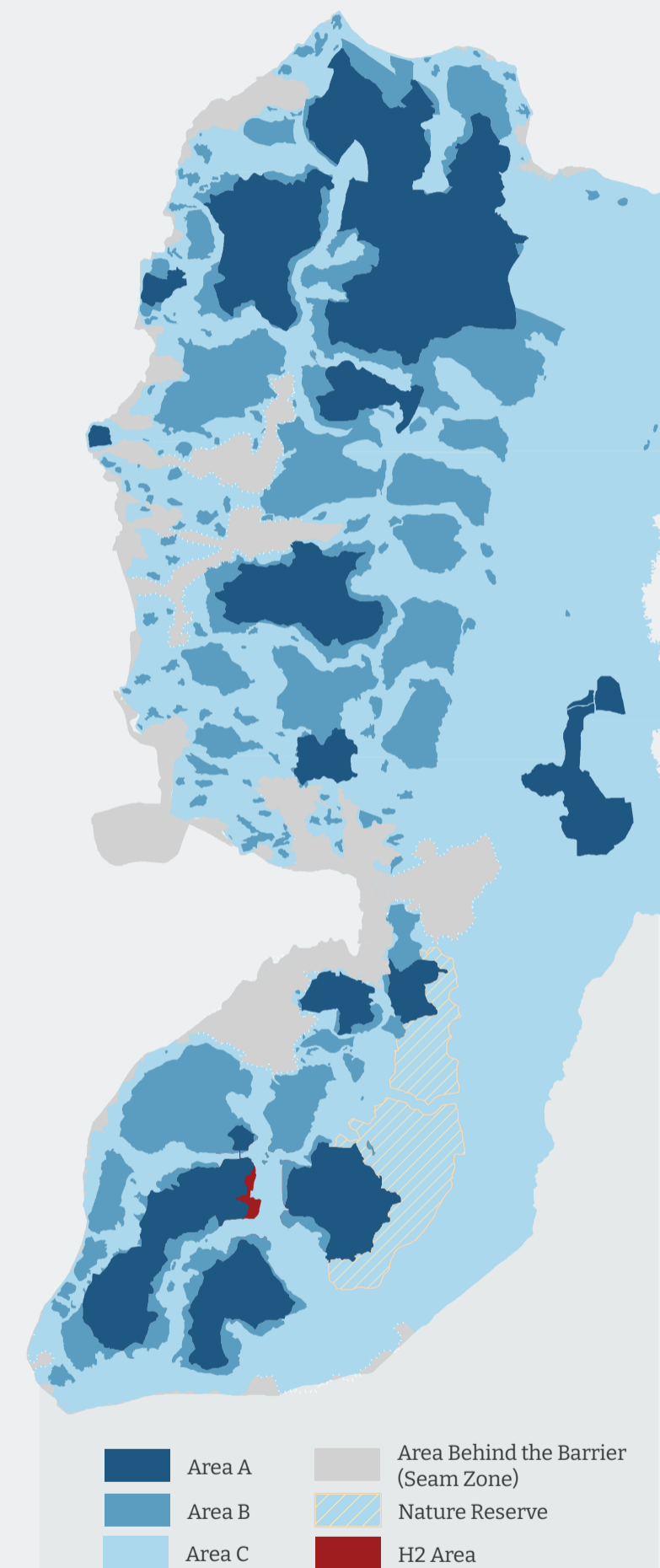
in Gaza Strip



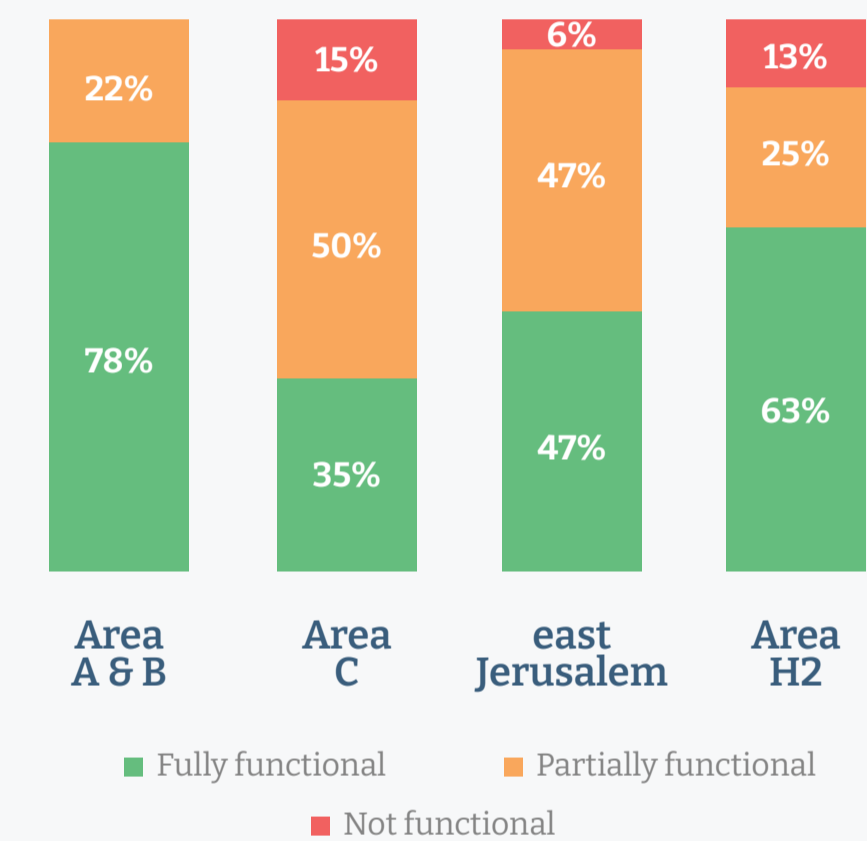
Challenges

-  Insecurity
-  Medical supplies
-  Displacements
-  Fuel shortages
-  Lack of access to locations in the north

in West Bank



Partners functionality



Challenges

-  Checkpoint closures and movement restrictions
-  Increased military operations and settler violence
-  Community displacements
-  Permits not being renewed

Health Cluster Partners Operational Response

in Gaza Strip




\$800K
worth prepositioned supplies released



\$5.5M
procured locally and delivered supplies




\$34.2M
donors funding commitments to date



Providing pre-hospital care through ambulance services




Providing surge staff to hospitals to support case management



Remote counselling (whenever network is available)



Provided fuel to key hospitals (when fuel was still available)



Mobile clinics to provide primary healthcare to internally displaced persons (IDP)


in West Bank



\$200K
worth prepositioned supplies released




\$800K
donors funding commitments to date



Providing pre-hospital care through ambulance services



Strengthening the emergency departments at major hospitals




Providing primary healthcare and other health services to Gaza workers sheltering across the West Bank



Activated district-level emergency SRH services

* SRH: Sexual and reproductive Health

Planned Response



\$227.7M
flash appeal funding requirement



2.8M
people in need
2.2M in Gaza **0.6M** in West Bank




2.5M
people targeted
2.0M in Gaza **0.5M** in West Bank



Emergency and trauma care of casualties, including procurement of needed supplies.



Provide access to primary and secondary healthcare services including management of Non-communicable diseases



Provide multidisciplinary rehabilitation services for the injured including limb reconstruction.



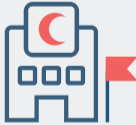
Expand community access to sexual and reproductive services including Gender-based violence




Replenishment of depleted prepositioned supplies for the management of casualties



Prevent and respond to outbreak-prone diseases including strengthening disease surveillance



Establish 3 field hospitals and deploy Emergency Medical Teams (EMTs)



Provide psychological first aid including for health workers and provision of psychotropic medications



Support health facilities and ambulances with fuel for 3 months



Provide emergency nutrition interventions for children under 5 and pregnant and lactating women



Repair of partially damaged health facilities to maintain services