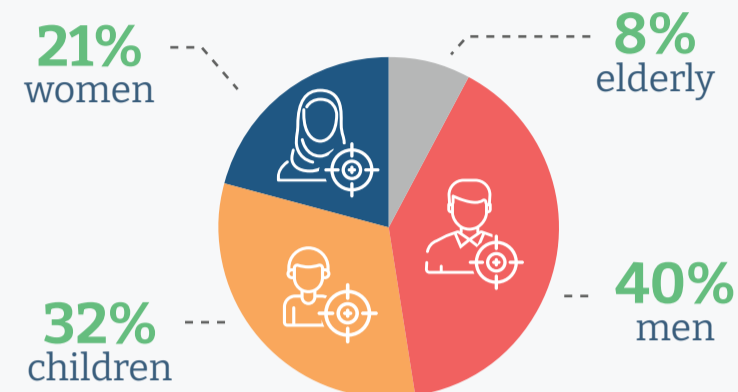


200 days of War

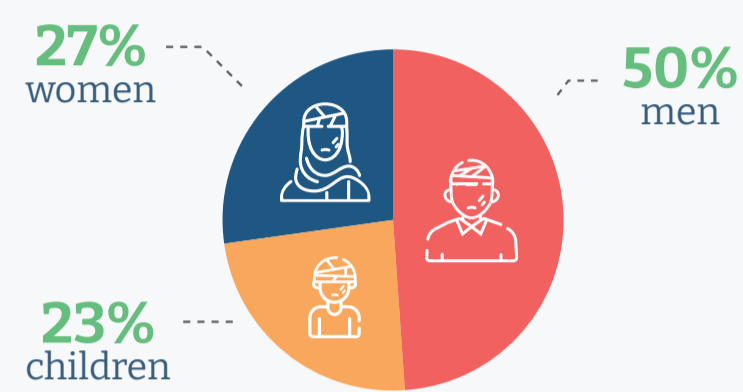
in Gaza Strip

in West Bank

34K+ Fatalities



77K+ Injuries



Food insecurity and malnutrition



480+ Fatalities



4.9K+ Injuries



Health systems functionality



32 Hospitals damaged (out of 36)

25 Hospitals not functioning (out of 36)

62 PHCCs* not functioning (out of 77)

* PHCC = primary health care centre

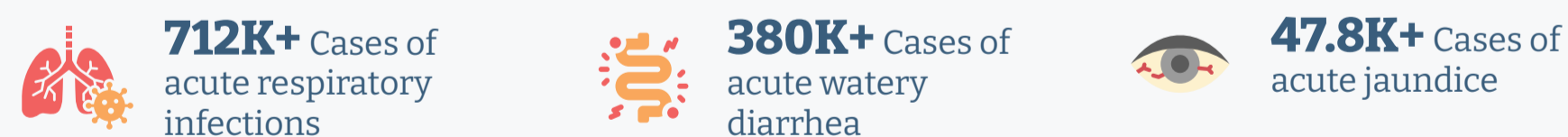
443 Attacks on Health Care



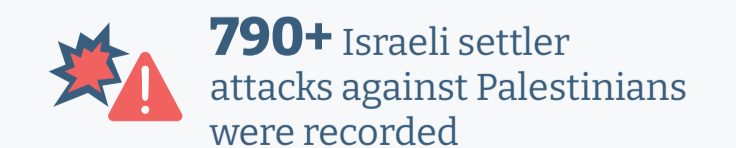
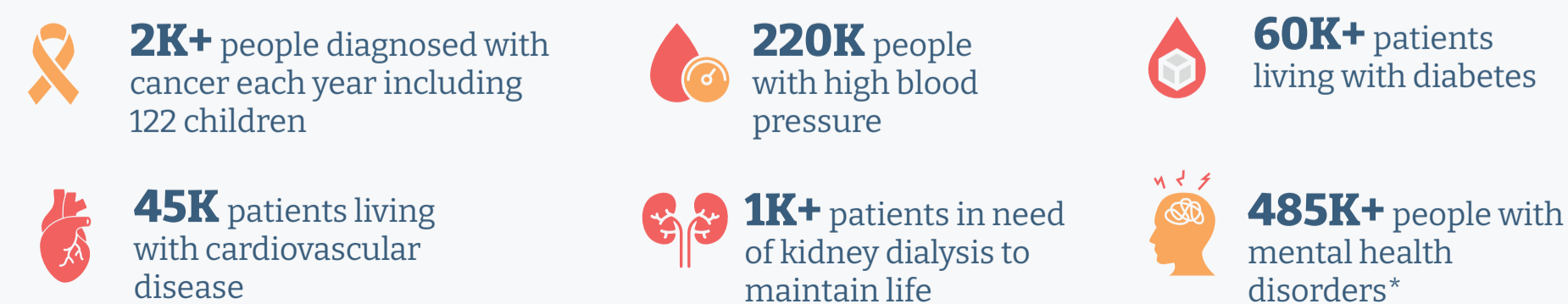
446 Attacks on Health Care



Communicable Diseases







Long-term conditions in Gaza








200 days of War

Ongoing Response




-  Reached an estimated **1.8M** people with various health services
-  **146K+** trauma and emergency care interventions provided along the trauma pathway
-  **4.25M** primary healthcare consultations
-  **4.2K+** patients and **5K+** companions have been referred abroad through Rafah Crossing

in Gaza Strip

-  **\$81.2M** worth of supplies procured
\$54M worth of supplies delivered
-  Established **6** field hospitals and deployed **23** Emergency Medical Teams (EMTs) to support case management
-  **8M+** litres of fuel used to maintain functional health facilities and partner operations
-  **169** disease surveillance sites reporting
-  Providing basic mental health and psychosocial support to **470K+** people

in West Bank



-  Reached an estimated **375K** people with various health services
-  **5.5K+** trauma and emergency care interventions provided along the trauma pathway
-  Providing mental health and psychosocial support to **27K+** people

-  Procuring and prepositioning needed supplies for **120K** people
-  **189K+** primary health care consultations to marginalized communities in Area C

Operational challenges




-  Insecurity
-  Limited access to locations in the north
-  Displacements
-  **251** humanitarian workers killed; **490** health workers killed

in Gaza Strip

-  Medical supplies
-  Social stresses affecting capacity of staff to work
-  Poor telecommunications
-  Fuel shortages

in West Bank



-  Checkpoint closures and movement restrictions
-  Increased military operations and settler violence
-  First response capacities overstretched due to increased casualties

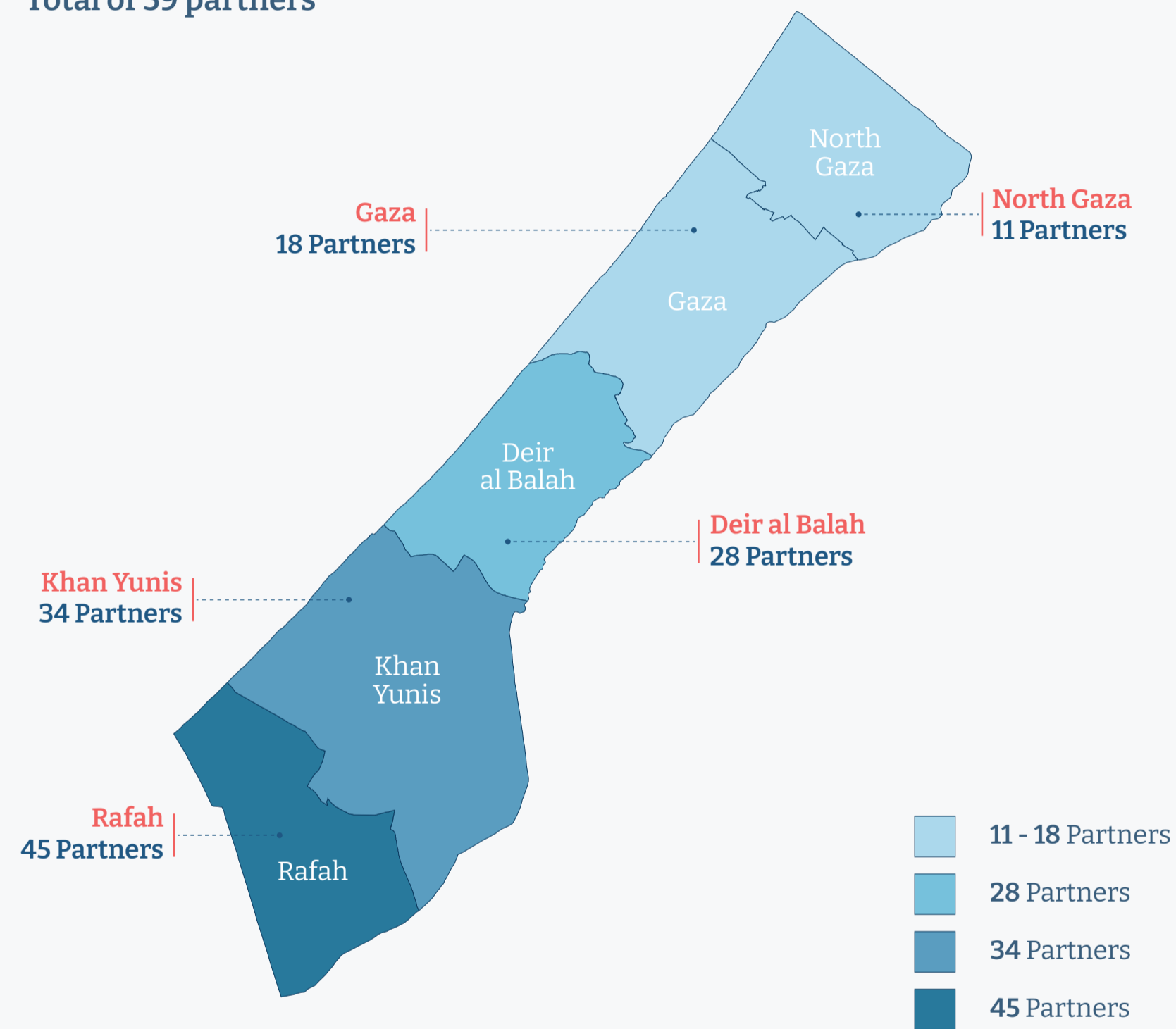
-  Community displacements
-  Permits not being renewed
-  Obstructed access for ambulances, health care workers, and patients

200 days of War

Partners, funding and donors

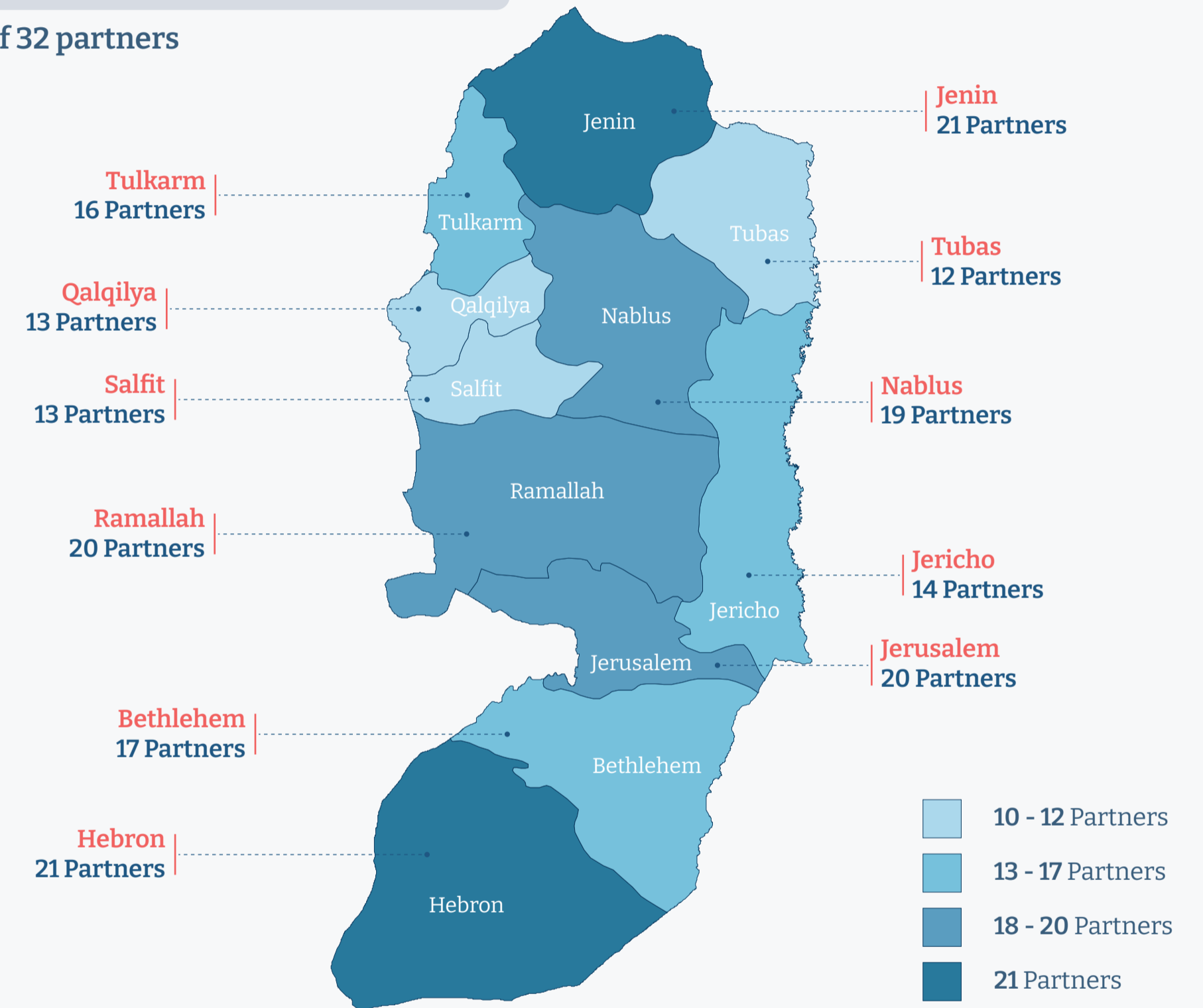
Partners Presence in Gaza Strip

Total of 59 partners



Partners Presence in West Bank

Total of 32 partners



Funding

\$204.2M
Funding requirement

\$128.8M (63%)
Funding received

Implementation rate (85%)

\$408.5M
Funding requirement

39 Partners
participating in Flash Appeal

Donors



Other private donors including individuals and organizations