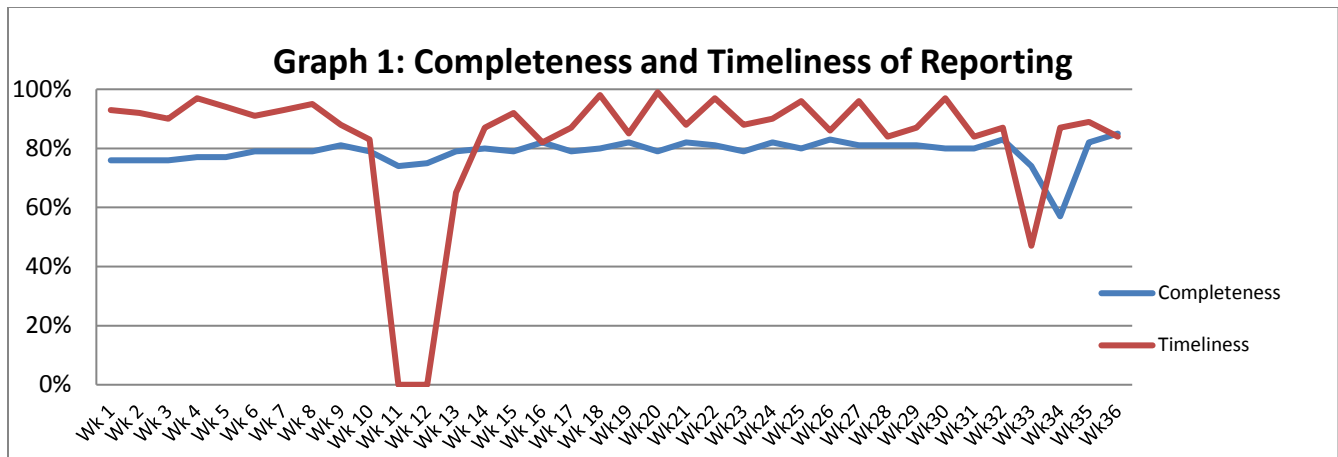


**Highlights:**

- ❖ 61 suspected Measles reported mainly from Deir Ezzor, Hassakeh and Raqqa.
- ❖ A decline in Typhoid suspected cases in Aresha camp with 30 reported cases.

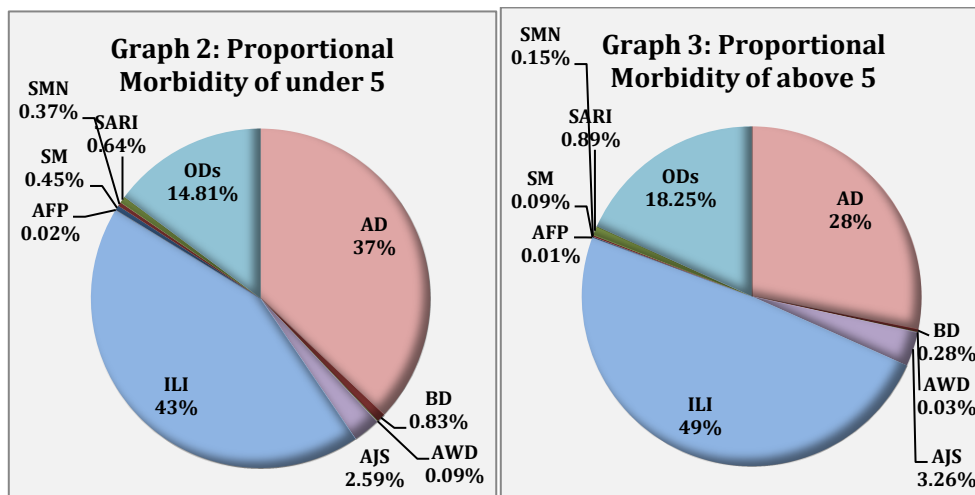
**Completeness & Timeliness of Reporting**

- ❖ The overall completeness of reporting was 85 %; (1073 out of total 1265 EWARS sentinel sites). 14 governorates have reported this week.
- ❖ Timeliness of reporting was 84%.

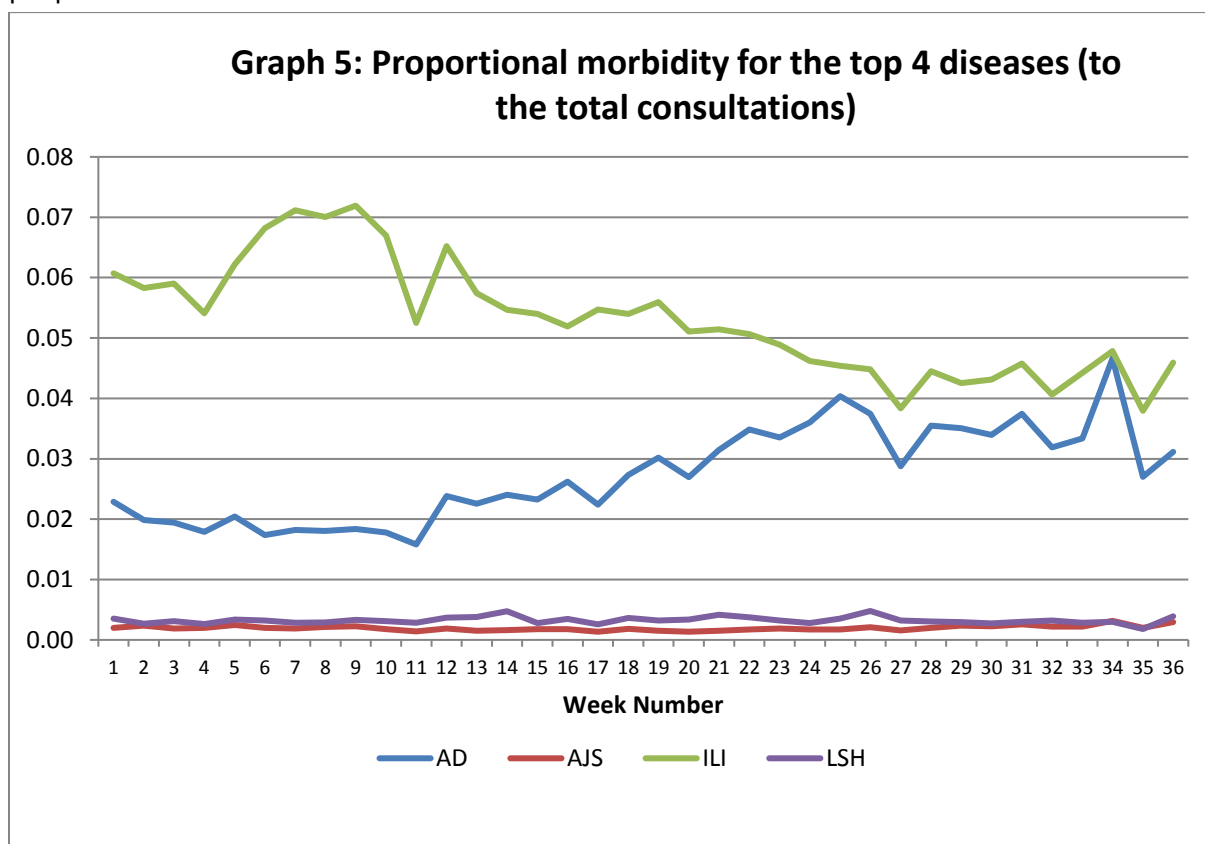


**The Morbidity Cases**

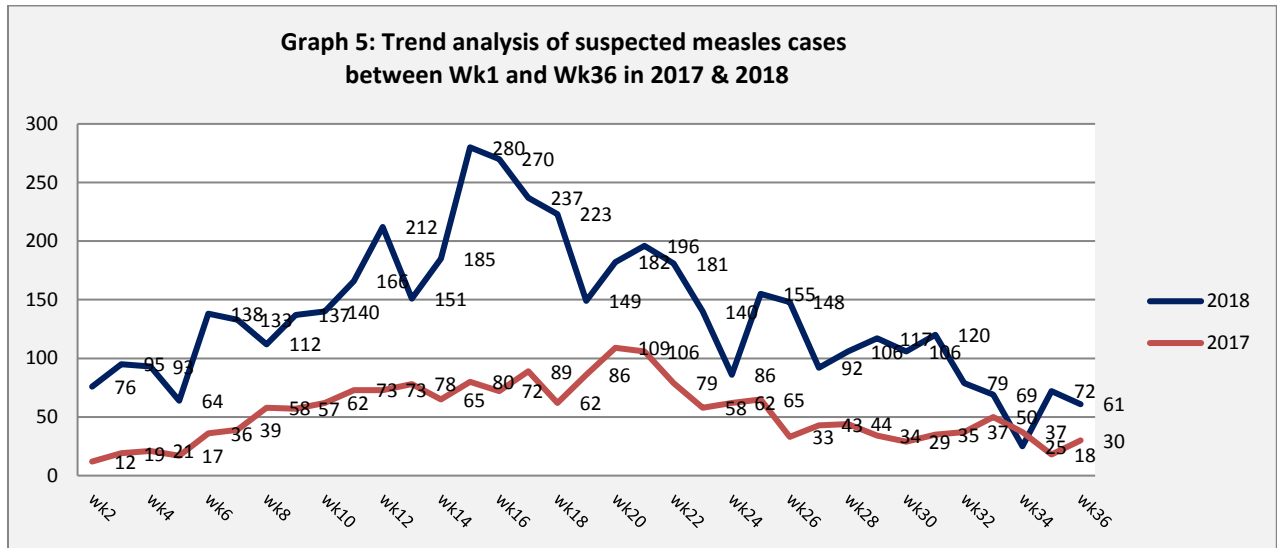
- ❖ Out of a total of 242,531 consultations, 25,542 EWARS notifiable cases were reported; of which 11,892 cases were influenza like illness (47%), 8,118 cases were acute diarrhoea (31%), 763 were acute jaundice syndrome, 202 were severe acute respiratory infection, 61 were suspected measles, 130 were bloody diarrhoea, and 61 were suspected meningitis.
- ❖ Graphs 2 and 3 below show the proportional morbidity among < 5 and ≥ 5 year age groups respectively.



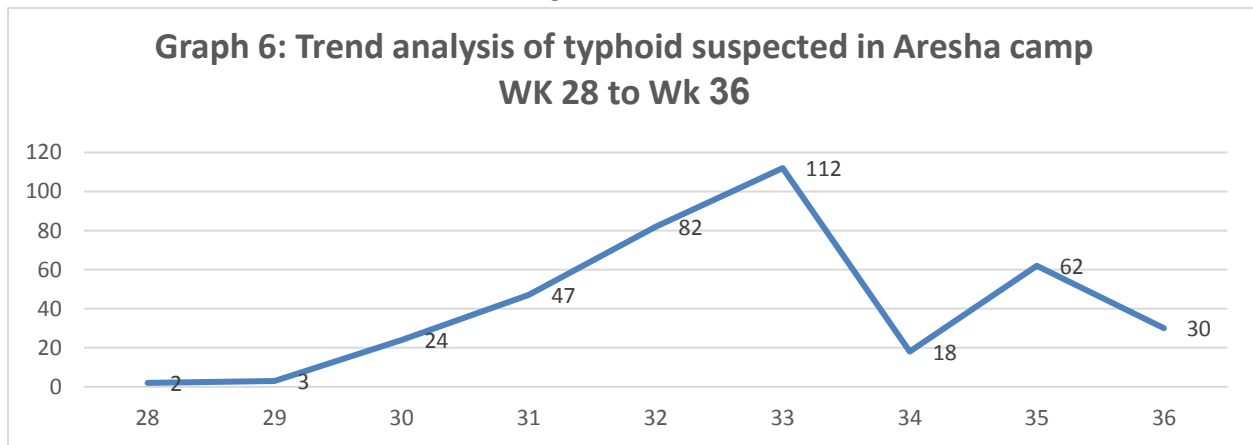
- ❖ 52% of the cases were distributed among males. 59% of the cases were distributed among  $\geq 5$  age group.
- ❖ Acute diarrhoea constitutes (37%) among  $< 5$  and (28%) among  $\geq 5$ , while influenza-like illness constitutes (43%) of the cases among  $< 5$  and (49%) among  $\geq 5$ .
- ❖ In total 4,298 cases were reported as “other diseases”. The most important diseases reported within this group were; 962 cases of leishmaniasis (mostly from Aleppo, Idleb and Deir Ezzor), 355 cases of brucellosis, 418 cases of typhoid, 18 cases of tuberculosis, 68 pertussis, and 34 mumps.
- ❖ Graph 4: shows the trend analysis of top four diseases to total consultations. It shows an increase in the trend of AD and ILI in the week 34, this increase was during the Eid holidays, and it might be attributed that people with actual illness visited the health facilities.



- ❖ Graph 5: After the implementation of the campaign in week 29, a significant decline in the number of suspected cases has been observed, the below graph shows the trend analysis of suspected measles cases reported through EWARS. National measles vaccination campaign for one week will be conducted from 16 September.



Graph 6: Trend analysis of suspected typhoid cases in Aresha camp. The graph indicates a decline in the number of cases in week 34; this decrease might be attributed to WASH and health education interventions.



❖ Table 1 shows comparison between reported cases in week-35 and week-36 2018.

**Table 1: Comparison between reported cases for week 35 and week 36 in 2018.**

Disease	35	36
AD	8,550	8,118
BD	100	130
AWD	0	0
AJS	634	763
ILI	13,837	11,892
AFP	4	3
SM	72	61

SMN	60	61
SARI	291	202
TYF	440	418
PER	92	68
LSH	578	962
BRU	379	355
TB	20	18
SCA	484	550
LIC	499	763
CHP	327	523
MUM	30	34
Others	376	607
<b>Total</b>	<b>26773</b>	<b>25,528</b>

## ❖ The Response

### Measles

Coordination between, MOH, WHO, UNICEF and MOE, is going on to conduct the second phase of the subnational campaign from 16 to 27 September 2018, this campaign will school children (from 6 year–under 12) across the 7 governorates (Al-Hassakeh, Deir Ezzor , Ar-Raqqqa, Aleppo, rural Damascus, Homs, Hama). The total number of targeted children is 1,452,293.

### Suspected typhoid, Aresha camp, Al Hassakeh:

345 suspected cases reported since week 30, with 30 cases were reported in week 35.

WHO has started implementing a raising awareness campaign of water borne diseases by deployment of health education teams to provide health education sessions on the mean prevention measures about the principles of personal hygiene and the need to adhere to strict hygiene when preparing and handling food, in addition to provide health education for patients and to emphasis on hands washing after defecation and before preparation food. The campaign will be implemented in 5 IDPs camps in Al Hassakeh.

**Table-2: Distribution of cases per age group, and by Governorate-week-36, 2018:**

Code	age group	Idleb	Hassaka	Raqqa	Sweida	Qunaitra	Lattakia	Aleppo	Hama	Homs	Daraa	Damascus	DierEzor	Rural Damascus	Tartous	Grand Total
AD	< 5	192	146	237	137	69	336	575	218	134	141	436	738	448	102	3,909
	≥ 5	198	112	167	153	68	418	554	191	115	203	495	794	490	251	4,209
BD	< 5	0	26	21	7	0	2	0	0	2	7	4	18	0	1	88
	≥ 5	0	18	7	6	0	5	0	0	0	2	3	0	0	1	42
AWD	< 5	0	0	0	0	0	0	0	0	0	0	0	0	0	0	0
	≥ 5	0	0	0	0	0	0	0	0	0	0	0	0	0	0	0
AJS	< 5	3	16	70	1	3	38	17	9	2	14	11	78	9	3	274
	≥ 5	6	26	34	11	5	146	31	52	23	35	28	53	24	15	489
ILI	< 5	14	203	56	166	199	796	619	103	66	195	251	875	698	320	4,561
	≥ 5	5	155	48	256	504	1,038	1,091	79	127	438	487	872	1,140	1,091	7,331
AFP	< 5	0	0	0	0	0	0	0	0	1	0	0	1	0	0	2
	≥ 5	0	0	0	0	0	0	0	1	0	0	0	0	0	0	1
SM	< 5	0	11	4	0	0	0	0	1	2	1	2	25	2	0	48
	≥ 5	0	5	2	0	0	0	0	1	1	0	0	4	0	0	13
SMN	< 5	0	0	4	0	0	0	0	4	0	1	2	28	0	0	39
	≥ 5	0	1	3	0	0	1	0	10	0	0	5	2	0	0	22
SARI	< 5	0	6	19	0	0	1	0	7	0	0	4	30	0	1	68
	≥ 5	0	6	16	6	0	13	0	16	0	1	44	31	0	1	134
Others	< 5	627	72	77	29	9	30	133	37	28	13	2	371	136	0	1,564
	≥ 5	468	178	140	34	34	64	408	192	64	44	33	748	317	10	2,734
<b>Total Sum of &lt; 5</b>		836	480	488	340	280	1,203	1,344	379	235	372	712	2,164	1,293	427	10,553
<b>Total Sum of ≥ 5</b>		677	501	417	466	611	1,685	2,084	542	330	723	1,095	2,504	1,971	1,369	14,975
<b>Total</b>		<b>1,513</b>	<b>981</b>	<b>905</b>	<b>806</b>	<b>891</b>	<b>2,888</b>	<b>3,428</b>	<b>921</b>	<b>565</b>	<b>1,095</b>	<b>1,807</b>	<b>4,668</b>	<b>3,264</b>	<b>1,796</b>	<b>25,528</b>