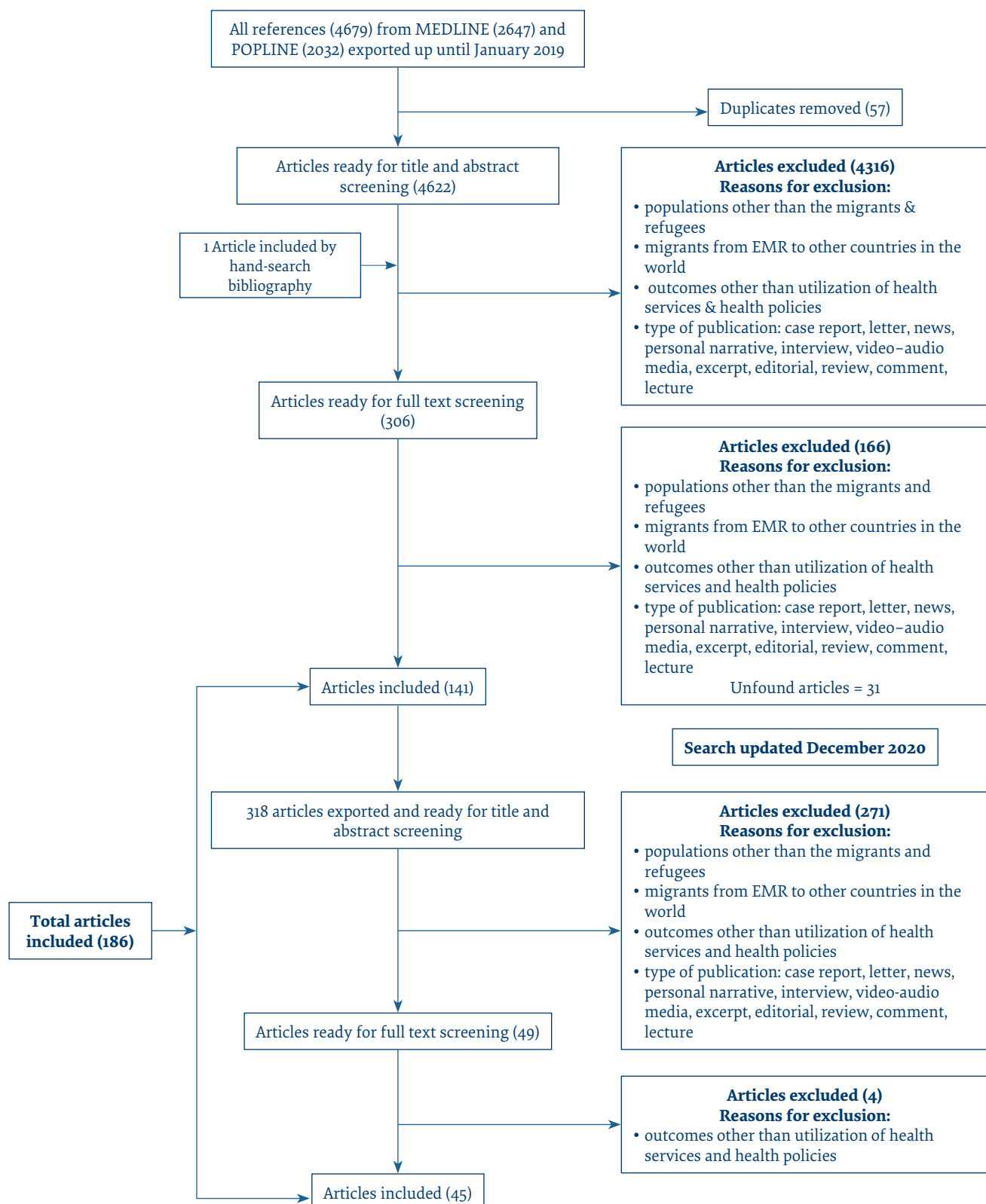


Figure 1 Flow chart showing the inclusion and exclusion process for this review



ture did not address services for IDPs as much as it did for refugees. Injury care (including treating the severely wounded, providing reconstructive surgeries and opening emergency rooms) was abundantly addressed in the literature, but reported as not always being available.

With funding shortfalls for the humanitarian response, particularly as crises in the Region are becoming protracted, there is a need for innovative and responsive service delivery models (5,194). In order not to leave behind the hard-to-reach populations, there is also a need for mobile service delivery models; however, only 2 identified