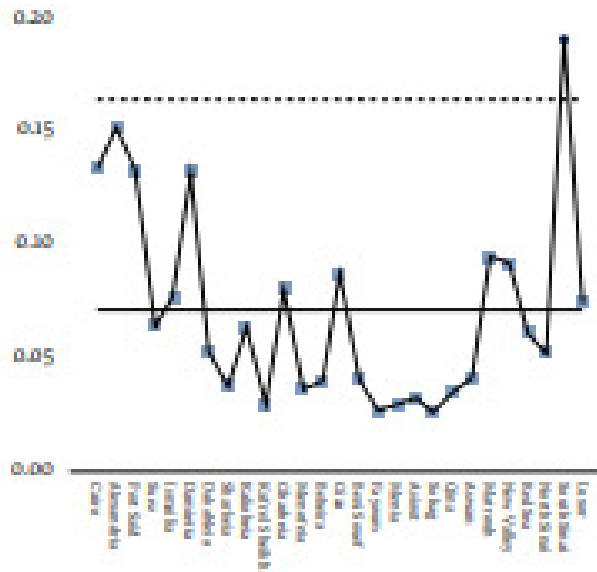
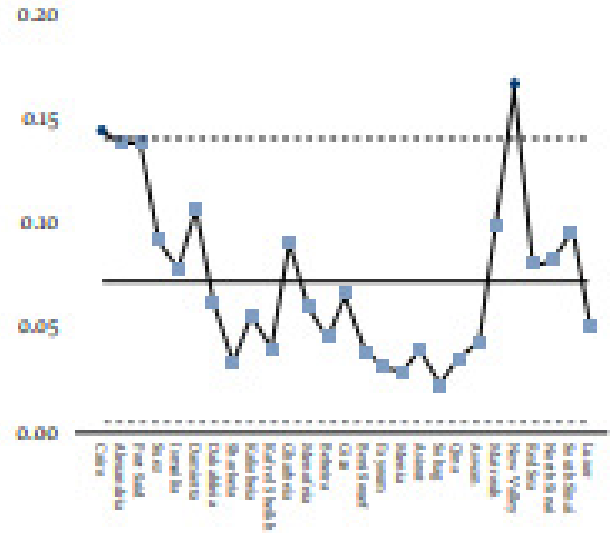


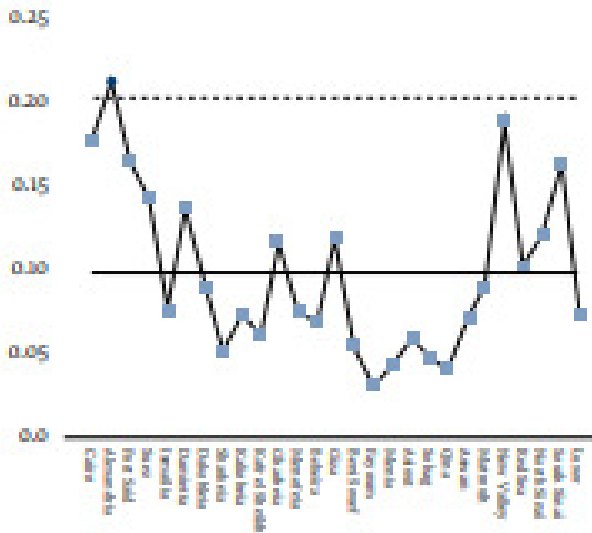
Figure 3 Governorates showing variation in number of dentists to 1000 population in 1995–1999, 2000–2004, 2005–2009 and 2010–2014



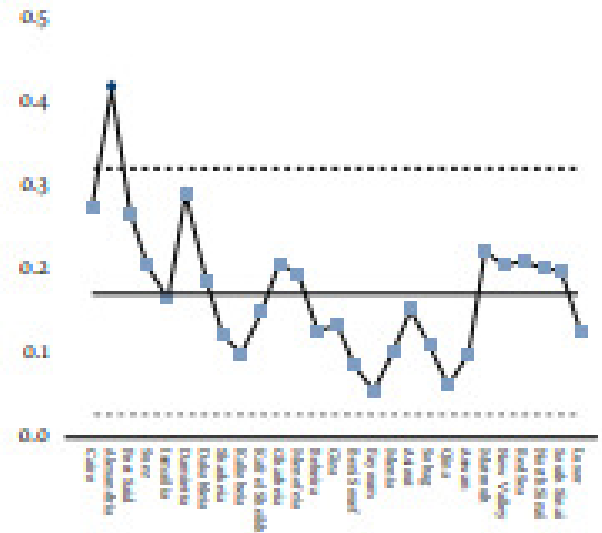
Dentists per 1000 population (1995–1999)  
South Sinai > 3  $\sigma$



Dentists per 1000 population (2000–2004)  
Cairo and New Valley > 3  $\sigma$



Dentists per 1000 population (2005–2009):  
Alexandria > 3  $\sigma$



Dentists per 1000 population (2010–2014):  
Alexandria > 3  $\sigma$

Control rule violation: ■ No ● Yes