

Figure 2A Polymerase chain reaction–restriction fragment length polymorphism assay using restriction enzymes of confirmed tuberculosis patients; lanes 1,2,3,4,5,6 were *Mycobacterium tuberculosis* complex isolates that showed 2 fragments. M = control marker 100 bp; N = negative control

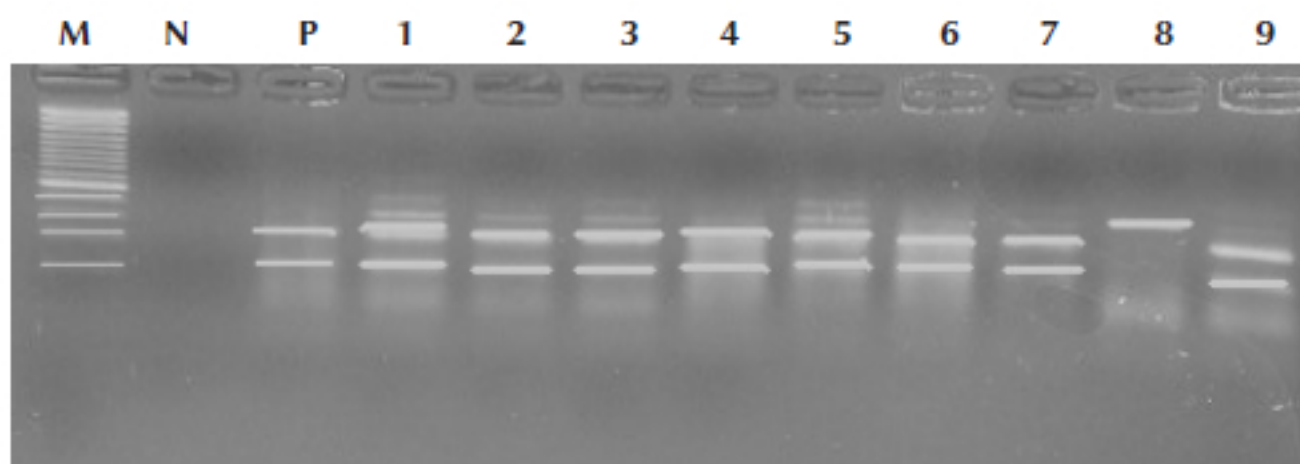


Figure 2B Polymerase chain reaction–restriction fragment length polymorphism assay using restriction enzymes of confirmed tuberculosis patients; lanes 1,2,3,4,5,6,7,9 were *Mycobacterium tuberculosis* complex isolates that showed 2 fragments, whereas lane 8 is *Mycobacteria* other than *M. tuberculosis* that showed 1 fragment. M = control marker 100 bp; N = negative control; P = positive control