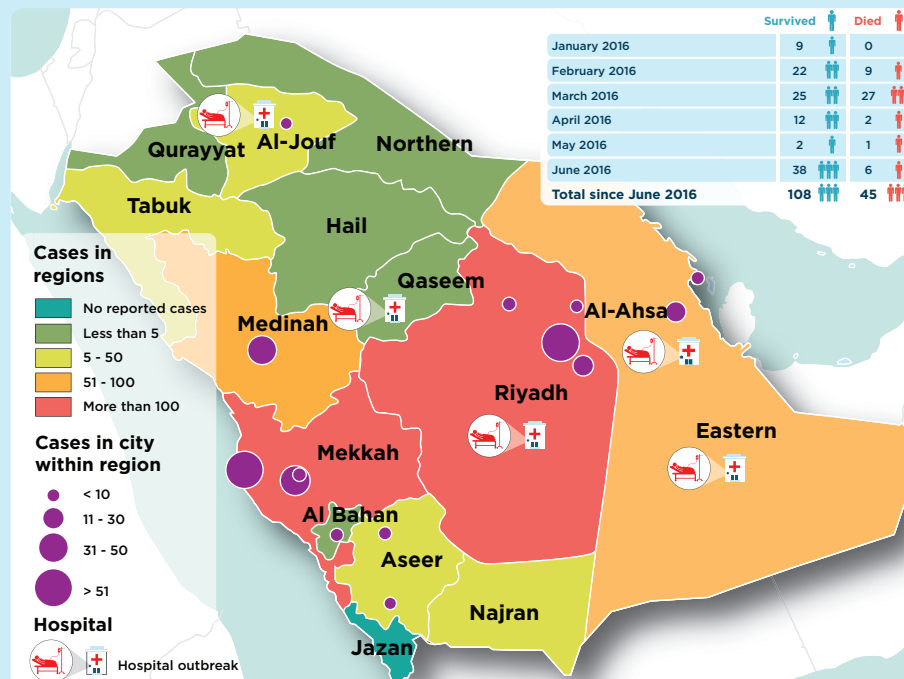


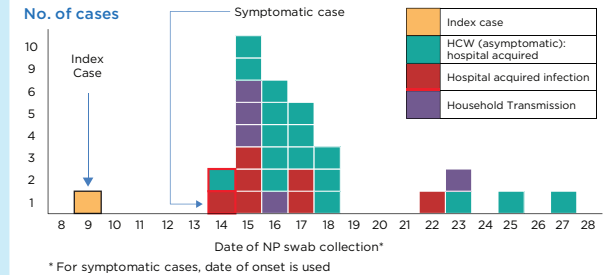
HIGHLIGHTS

- In the month of June 2016, a cluster of MERS-CoV cases was reported from a university hospital in Riyadh, Saudi Arabia. A total of 30 laboratory-confirmed case of Middle East respiratory syndrome (MERS), including one related death was reported from this cluster. Most of the cases were asymptomatic and were detected following an active screening of close contacts of the index patient. A total of 17 asymptomatic health care workers were detected from this cluster.
- During the first six months of 2016, both Bahrain (1 death), Jordan (2 cases), Saudi Arabia (154 cases, including 45 deaths), Qatar (3 cases, including 1 death) and United Arab Emirates (2 cases) reported laboratory-confirmed case of MERS. Compared to similar time period in 2015 (January-June), there has been a 30% decline in number of MERS cases reported during the same corresponding period in 2016.
- The demographic and epidemiological characteristics of the cases reported in 2016 do not show any significant difference when compared with cases reported from 2012 to 2015 (combined).
- The age group of those aged 50-59 years continues to be group at highest risk for acquiring infection as primary cases, while the group at highest risk for acquiring infection as secondary cases is those aged 30-39 years. The majority of deaths among primary and secondary cases have occurred in the age groups of 50-59 and 70-79 years, respectively.

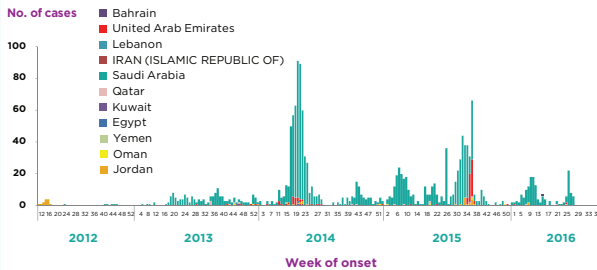
MERS cases in Saudi Arabia 2012- June 2016



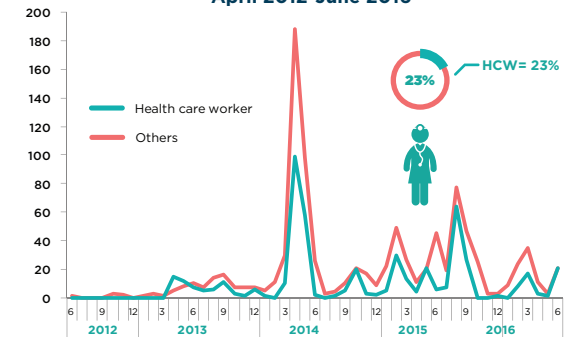
MERS case cluster reported from a single hospital in Riyadh, 8-28 June 2016



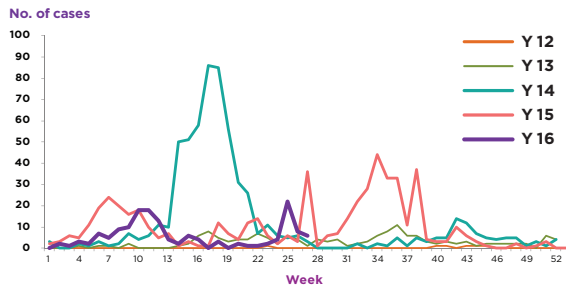
MERS cases reported from the Eastern Mediterranean Region by week of symptoms onset, April 2012-June 2016



Reported cases of MERS in healthcare workers, April 2012-June 2016



MERS cases reported from Saudi Arabia by year, 2012-2016



Epidemiological characteristics of MERS cases reported globally between Jan-June in 2013 - 2016

Characteristic	Jan-Jun 2013	Jan-Jun 2014	Jan-Jun 2015	Jan-Jun 2016
Number	59	527	222	154
Median age in years	52.6	47.8	55	51.6
Gender (% male)	63	62	73	67
% of primary cases	15	11	36	48
% of secondary cases	69	44	45	47
(%) unknown contact history	10	13	12	1
% HCW	12	25	11	18
% Fatal	59	40	46	29

Outcome of MERS cases reported globally, 2012-2016

Year	2012	2013	2014	2015	2016	Grand Total
Died	6	100	277	268	49	700
Survived	15	82	400	521	118	1136
CFR(%)	29	55	41	34	30	38

Age and fatality distribution of Primary and Secondary cases of MERS reported from Saudi Arabia, 2012-2016

