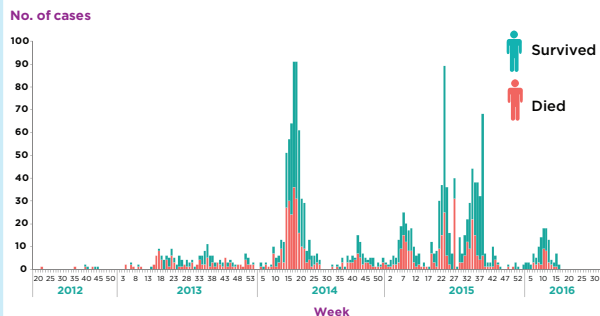


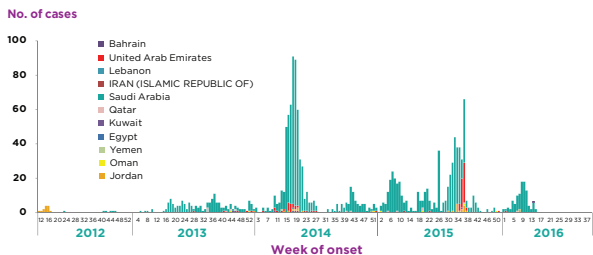
HIGHLIGHTS

- Bahrain reported its first case of Middle East respiratory syndrome coronavirus (MERS-CoV) on 10 April 2016. The case was fatal, a 61-year-old Saudi male who was admitted to a health facility in Bahrain for an unrelated medical condition. With this case reported from Bahrain, which was an imported case, all member countries of the Gulf Cooperation Council have now reported laboratory-confirmed cases of MERS. Globally, since April 2012, WHO has been notified of 1788 laboratory-confirmed cases of MERS-CoV, including at least 681 deaths.
- After the recent surge in cases reported in March 2016, a steady decline in MERS cases has been reported in Saudi Arabia.
- No new clusters or hospital outbreaks of MERS were reported in April 2016. The hospital outbreak that was reported during the months of February and March in Buridah city of the Qaseem region is reported to be over.
- Compared to 2015, there has not been a substantial increase in the number of reported cases. The age characteristics of the cases reported in 2016 do not show any significant difference when compared with age characteristics of cases reported from 2012 to 2015 (combined).
- The age group of those aged 50-59 years continues to be group at highest risk for acquiring infection as primary cases, while the group at highest risk for acquiring infection as secondary cases is those aged 30-39 years. The majority of deaths among primary and secondary cases have occurred in the age groups of 50-59 and 70-79 years, respectively.

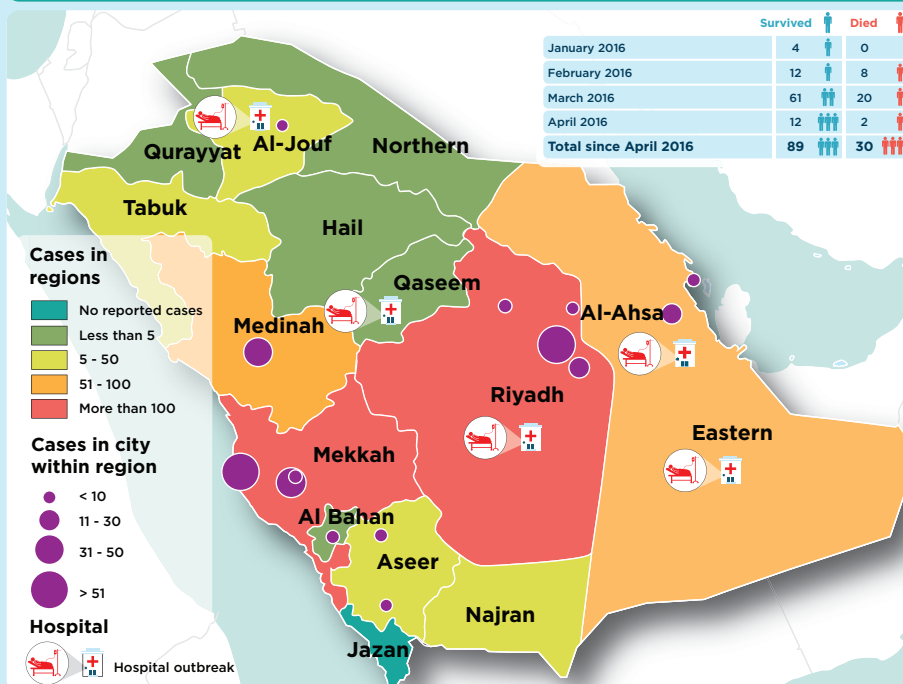
MERS: global epidemic curve, April 2012-April 2016



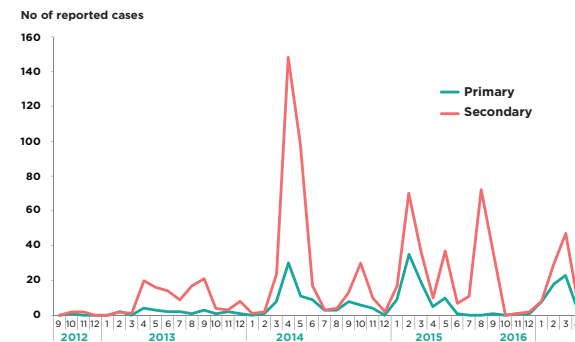
MERS: Cases reported from the Eastern Mediterranean Region, by week of symptoms onset, 2012- April 2016



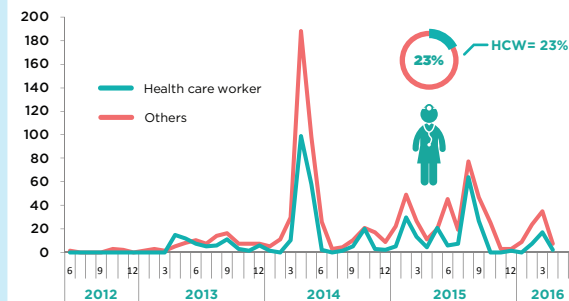
MERS cases in Saudi Arabia 2012- April 2016



MERS: Epidemic curve of cases reported from the Eastern Mediterranean Region, April 2012 to April 2016



Reported cases of MERS in healthcare workers, April 2012-April 2016



Epidemiological characteristics of MERS cases reported globally between Jan-Mar in 2013 - 2016

Characteristic	Jan-Mar 2013	Jan-Mar 2014	Jan-Mar 2015	Jan-Mar 2016
Number	9	66	152	98
Median age in years	51.2	52.2	55.5	52.3
Gender (% male)	78	86	75	74
% of primary cases	0	9	40	53
% of secondary cases	33	32	41	40
(%) unknown contact history	33	53	17	7
% HCW	11	21	32	28
% Fatal	78	48	44	31

The outcome of reported MERS cases, by year of onset, 2012-2016

Year	2012	2013	2014	2015	2016	Grand Total
Died	6	100	277	268	30	681
Survived	15	82	400	521	89	1107
CFR(%)	29	55	41	34	25.2	38

Age and fatality distribution of Primary and Secondary cases of MERS reported from Saudi Arabia, 2012-2016

