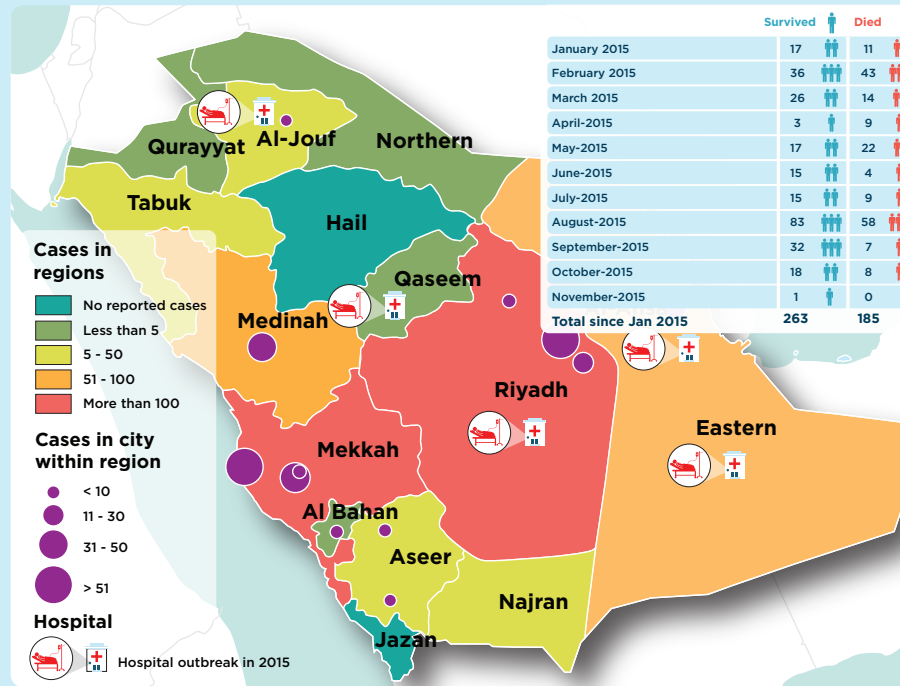


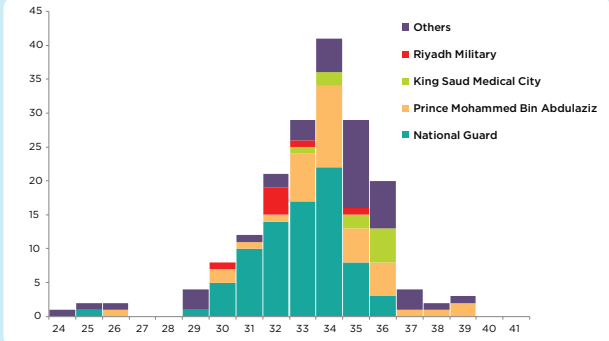
HIGHLIGHTS

- As of 30 November 2015 the global number of reported **Middle East Respiratory Syndrome coronavirus** cases reached 1621, including 610 deaths (case fatality rate of 33.6%). In Saudi Arabia the total number of reported cases reached 1277 (78.8% of the global number) with a CFR of 42.5%.
- A total of 476 laboratory-confirmed cases of Middle East Respiratory Syndrome Coronavirus (MERS-CoV) including 192 deaths (CFR: 40%) were reported from the countries of WHO Eastern Mediterranean Region between 01 January to 08 November 2015. Majority of the cases were reported from Saudi Arabia (448 cases) followed by Jordan (12 cases), United Arab Emirates (7 cases), Qatar (4 cases), Oman (3 cases) and one case from each Iran and Kuwait.
- Compared to 2014, there has not been any substantial increase in number of reported cases and the age characteristics of the cases reported in 2015 do not show any significant difference when compared with age characteristics of cases reported from 2012 to 2014 (combined).
- The age group of 50-59 years continues to be main risk group for acquiring infection for primary cases, while the risk group for secondary cases is observed to be 30-39 years. Majority of deaths amongst the primary and secondary cases have been seen to have occurred in the age group of 50-59 and 70-79 years respectively.
- Compared to 2014, although the cases have not registered a significant increase, hospital outbreaks continue to be reported from Saudi Arabia and remain a major concern.

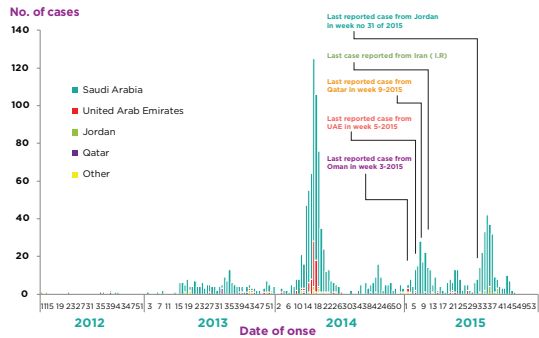
MERS cases in Saudi Arabia 2012- November 2015



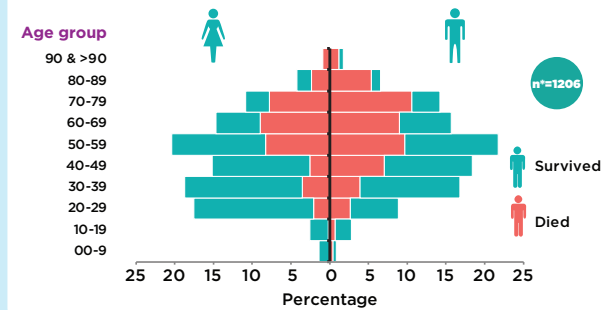
MERS cases reported from Riyadh region, Saudi Arabia, week no 24 to 39



Epidemic curve of MERS cases reported from the Eastern Mediterranean Region, April 2012- November 2015



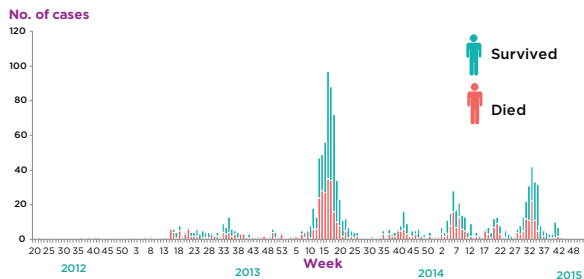
Age and gender distribution of reported MERS cases from Saudi Arabia, 2012-2015



Epidemiological characteristics of MERS cases reported between Jan-Nov in 2013-2015

Characteristic	Jan-Nov 2013	Jan-Nov 2014	Jan-Nov 2015
Number	147	653	448
Median age in years	51	48	55
Gender (% male)	64	64	65
% of primary cases	24	22	09
% of secondary cases	53	43	40
(%) unknown contact history	22	33	13
% HCW	17	26	14
% Fatal	52	37	33

MERS cases reported from Saudi Arabia by week of onset, 2012-2015



Reported MERS-CoV cases, Saudi Arabia by year of onset, 2012-2015

Year	2012	2013	2014	2015	Grand Total
Died	3	82	273	185	543
Survived	2	78	391	263	734
CFR(%)	60	51	41	41	43

Age and fatality distribution of primary and secondary cases of MERS, Saudi Arabia, 2012-2015

