

# Coronavirus Disease 2019 (COVID-19) Situation Report

Data as reported by national authorities by 24:00 local time 13 March 2021

## Situation Report No. 246 - Kingdom of Bahrain

14<sup>th</sup> of March, 2021



	Global		Eastern Mediterranean Region	
	COVID-19 Cases	COVID-19 Deaths	COVID-19 Cases	COVID-19 Deaths
<b>Total</b>	<b>118,754,336</b>	<b>2,634,370</b>	<b>6,829,978</b>	<b>149,771</b>
<b>New</b>	<b>1,398,983 in 3 days</b>	<b>28,335 in 3 days</b>	<b>109,778 in 3 days</b>	<b>1,237 in 3 days</b>

### Kingdom of Bahrain

	Confirmed Cases	Recovered Cases	Deaths	Active Cases	Critical Cases	PCR Tests
<b>Total</b>	<b>130,404</b>	<b>123,671</b>	<b>481</b>	<b>6,252</b>	<b>61</b>	<b>3,289,371</b>
<b>New</b>	<b>1,976 in 3 days</b>	<b>1,895 in 3 days</b>	<b>5 in 3 days</b>	<b>-</b>	<b>-</b>	<b>46,851 in 3 days</b>

### HIGHLIGHTS

- The Mortality were: 5 Bahraini citizens (3 male (52, 66 and 69 years old) and 1 female (67 years old)) and 60 years old female expatriates.
- Increasing number of citizens and residents continue to take COVID-19 Vaccine in Bahrain; and Ministry of Health (MOH) revealed the total number of individuals vaccinated as of 13 March 2021 for the first dose (322,508) and for the second dose (212,137).
- H.E the Minister of Health announced the delivery of 300,000 doses of Sinopharma Vaccine from China.
- Assistant Chief of Public Security revealed that family gatherings is the main reason for rising COVID-19 infection cases.
- National Medical Taskforce for Combating the Coronavirus announced the reopening of various sectors starting from Sunday 14 March 2021, including:
  - Reopening of indoor dining services at restaurants and cafes with a maximum capacity of 30 customers, while continuing outdoor dining services, in accordance with the procedures and requirements previously announced.
  - Reopening of private indoor gyms, sports halls, and swimming pools; according to previously announced procedures and requirements.
  - Prohibition of all social gatherings or private events held at home, and private locations, with more than 30 individuals.
  - Resumption of optional in-person learning at public and private schools, institutions, universities, and kindergartens; as well as public rehabilitation centres, nurseries, private training centres and institutes.
  - Reopening of Bahraini mosques for all daily prayers.
- WHO: New research helps to increase understanding of the impact of COVID19 for pregnant women and their babies; see link below.
- WHO: Guidance on informing vaccination programs: a guide to the design and conduct of dengue surveys; see link below.
- WHO: Responding to non-communicable diseases during and beyond the COVID-19 pandemic; see link below.
- WHO: Emergency Global Supply Chain System(COVID-19) catalogue; see link below.
- WHO: Interim guidance on Antigen-detection in the diagnosis of SARS-CoV-2 infection using rapid immuno assay; see link below.
- WHO: Global TB progress a trisk; see link below.
- WHO: ICMRA joint statement on the need for improved global regulatory alignment of COVID-19 medicines; see link below.
- WHO: Interim guidance Operational considerations for COVID19 surveillance using GISRS; see link below.
- WHO: Statement by WHO Director of Programme Management on COVID-19 pandemic; see link below.
- WHO: As COVID19 spread accelerates, JHR Emergency Committee urges focus on measures that work; see link below.
- WHO: The push for aCOVID-19 vaccine; see link below.
- WHO-ICMRA joint statement on the need for improved global regulatory alignment on COVID-19 medicines and vaccines; see link below.
- WHO Living Guideline: Theapeutics and COVID-19; see link below.
- WHO: Interim guidance on Diagnostics, therapeutics, vaccine readiness, and other health products for COVID-19; see link below.
- WHO: Evidence to recommendations: COVID-19 mitigation in the aviation sector; see link below.
- WHO: Health workforce policy and management in the context of the COVID-19 pandemic response; see link below.
- WHO: Checklist to support schools re-opening and preparation for COVID-19 resurgences or similar public health crises; see link below.
- WHO: COVID-19 vaccine introduction and deployment costing tool; see link below.
- WHO: Emergency Use Designation of COVID-19 candidate vaccines: Ethical considerations for current and future COVID-19 place bo-controlled vaccine trials and trial unblinding; see link below.
- WHO: Considerations for implementing a risk-based approach to international travel in the context of COVID-19; see link below.
- WHO: Risk assessment tool to inform mitigation measures for international travel in the context of COVID-19; see link below.
- WHO: COVAX Announces additional deals to access promising COVID-19 vaccine candidates; plans global rollout starting Q1 2021; see link below.
- WHO: National use of personal protective equipment for coronavirus disease (COVID-19) and considerations during severe shortages; see link below.
- WHO issues its first emergency use validation for a COVID-19 vaccine and emphasizes need for equitable global access; see link below.
- WHO: Background document on the AZD1222 vaccine against COVID-19 developed by Oxford University and AstraZeneca; see link below.
- WHO: Rotavirus vaccines made available for use in humanitarian crises; see link below.
- WHO: COVID-19 Virtual Press conference transcript; see link below.
- WHO: Draft landscape and tracker of COVID-19 candidate vaccines; see link below.

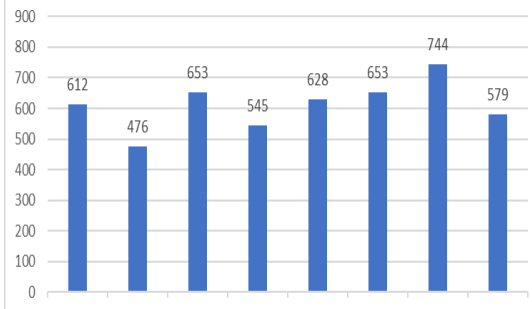
### IMPORTANT LINKS

- Daily COVID-19 updates on MOH website: <https://www.moh.gov.bh/>
- WHO COVID-19 weekly situation reports: [https://www.who.int/docs/default-source/coronavirus/situation-reports/20200817-weekly-epi-update-1.pdf?sfvrsn=6d49a76\\_4](https://www.who.int/docs/default-source/coronavirus/situation-reports/20200817-weekly-epi-update-1.pdf?sfvrsn=6d49a76_4)
- WHO COVID-19 Dashboard: <https://covid19.who.int/>
- WHO: New research helps to increase understanding of the impact of COVID19 for pregnant women and their babies; see link below.
- WHO: Guidance on informing vaccination programs: a guide to the design and conduct of dengue surveys; see link below.
- WHO: Responding to non-communicable diseases during and beyond the COVID-19 pandemic; see link below.
- WHO: Emergency Global Supply Chain System(COVID-19) catalogue; see link below.
- WHO: Interim guidance on Antigen-detection in the diagnosis of SARS-CoV-2 infection using rapid immuno assays; see link below.
- WHO: Global TB progress a trisk; see link below.
- WHO: ICMRA joint statement on the need for improved global regulatory alignment on COVID-19 medicines and vaccines; see link below.
- WHO: Interim guidance Operational considerations for COVID19 surveillance using GISRS; see link below.
- WHO: Statement by WHO Director of Programme Management on COVID-19 pandemic; see link below.
- WHO: As COVID19 spread accelerates, JHR Emergency Committee urges focus on measures that work; see link below.
- WHO: The push for aCOVID-19 vaccine; see link below.
- WHO-ICMRA joint statement on the need for improved global regulatory alignment on COVID-19 medicines and vaccines; see link below.
- WHO Living Guideline: Theapeutics and COVID-19; see link below.
- WHO: Interim guidance on Diagnostics, therapeutics, vaccine readiness, and other health products for COVID-19; see link below.
- WHO: Evidence to recommendations: COVID-19 mitigation in the aviation sector; see link below.
- WHO: Health workforce policy and management in the context of the COVID-19 pandemic response; see link below.
- WHO: Checklist to support schools re-opening and preparation for COVID-19 resurgences or similar public health crises; see link below.
- WHO: COVID-19 vaccine introduction and deployment costing tool; see link below.
- WHO: Emergency Use Designation of COVID-19 candidate vaccines: Ethical considerations for current and future COVID-19 placebo-controlled vaccine trials and trial unblinding; see link below.
- WHO: Considerations for implementing a risk-based approach to international travel in the context of COVID-19; see link below.
- WHO: Risk assessment tool to inform mitigation measures for international travel in the context of COVID-19; see link below.
- WHO: COVAX Announces additional deals to access promising COVID-19 vaccine candidates; plans global rollout starting Q1 2021; see link below.
- WHO: National use of personal protective equipment for coronavirus disease (COVID-19) and considerations during severe shortages; see link below.
- WHO issues its first emergency use validation for a COVID-19 vaccine and emphasizes need for equitable global access; see link below.
- Background document on the AZD1222 vaccine against COVID-19 developed by Oxford University and AstraZeneca; see link below.
- WHO: Rotavirus vaccines made available for use in humanitarian crises; see link below.
- WHO: COVID-19 Virtual Press conference transcript; see link below.
- WHO: Draft landscape and tracker of COVID-19 candidate vaccines; see link below.

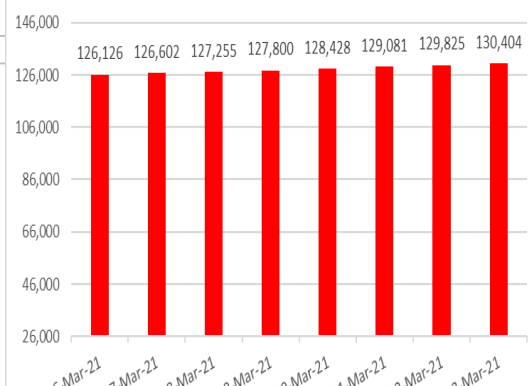
### IMPORTANT CONTACTS

- The National Focal Person is Dr. Najat Mohamed Abulfateh, email: [NAI5@health.gov.bh](mailto:NAI5@health.gov.bh)
- International Health Regulations focal person is Dr. Kubra Salman, email: [knasser@health.gov.bh](mailto:knasser@health.gov.bh)

Number of New Cases



Total Number of Cases



Number of New Deaths

